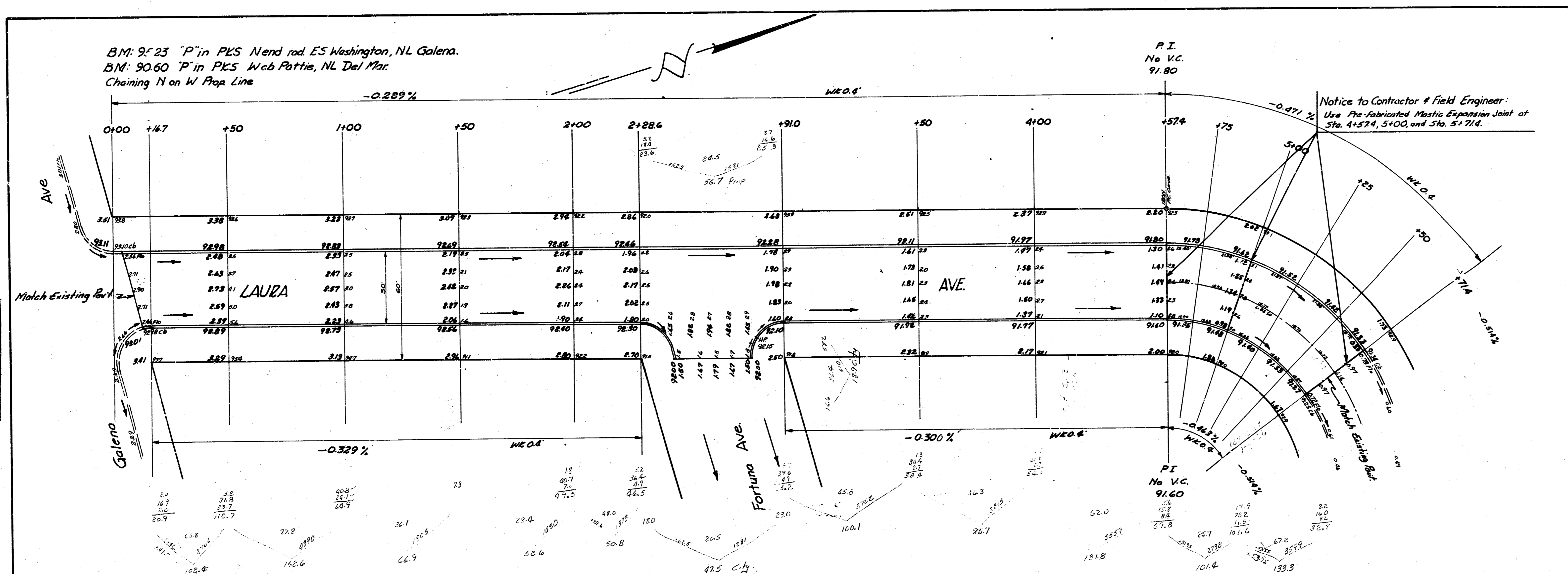


BM: 95.23 "P" in PKS Nend rd. ES Washington, NL Galena.  
 BM: 90.60 "P" in PKS Web Pottie, NL Del Mar.  
 Chaining N on W Prop Line



Notice to Contractor & Field Engineer:  
 Use Pre-fabricated Mastic Expansion Joint at  
 Sta. 4+57.4, 5+00, and Sta. 5+71.4.

Station  
 Plan  
 Exc  
 Checked

Excavation Totals  
 Property - 1044.3  
 +10% 104.4  
 1148.7 cu. yds.  
 City - 66.4  
 +10% 6.6  
 73.0 cu. yds.

**CURVE DATA - Sta. 4+57.4 to 5+71.4 Sta. on W.P.R.**  
 R=1110 Δ=27°12'57" Defl 1548531'-6 offset Wcb

STATION	Deflection Angle	Total Deflection	Chord Length	Chord Length
			Chord Length	Chord Length
4+57.4				
+75	4°12'06"	4°12'06"	16.24'	10.11'
5+00	5°52'11"	10°10'17"	22.09'	14.35'
+85	5°52'11"	16°02'28"	22.09'	14.35'
+50	5°52'11"	21°54'39"	22.09'	14.35'
+71.4	5°06'18"	27°12'57"	19.75'	12.28'



**LAUZA AVE.**  
 NL Galena to EL Lot 29 Blk 6 Rainbow 1<sup>st</sup> Add  
 30' Conc. #Cb  
 CITY OF WICHITA, KANSAS  
 B.E. SMITH CITY ENGINEER  
 AUG 1952 PROJ NO C14-152