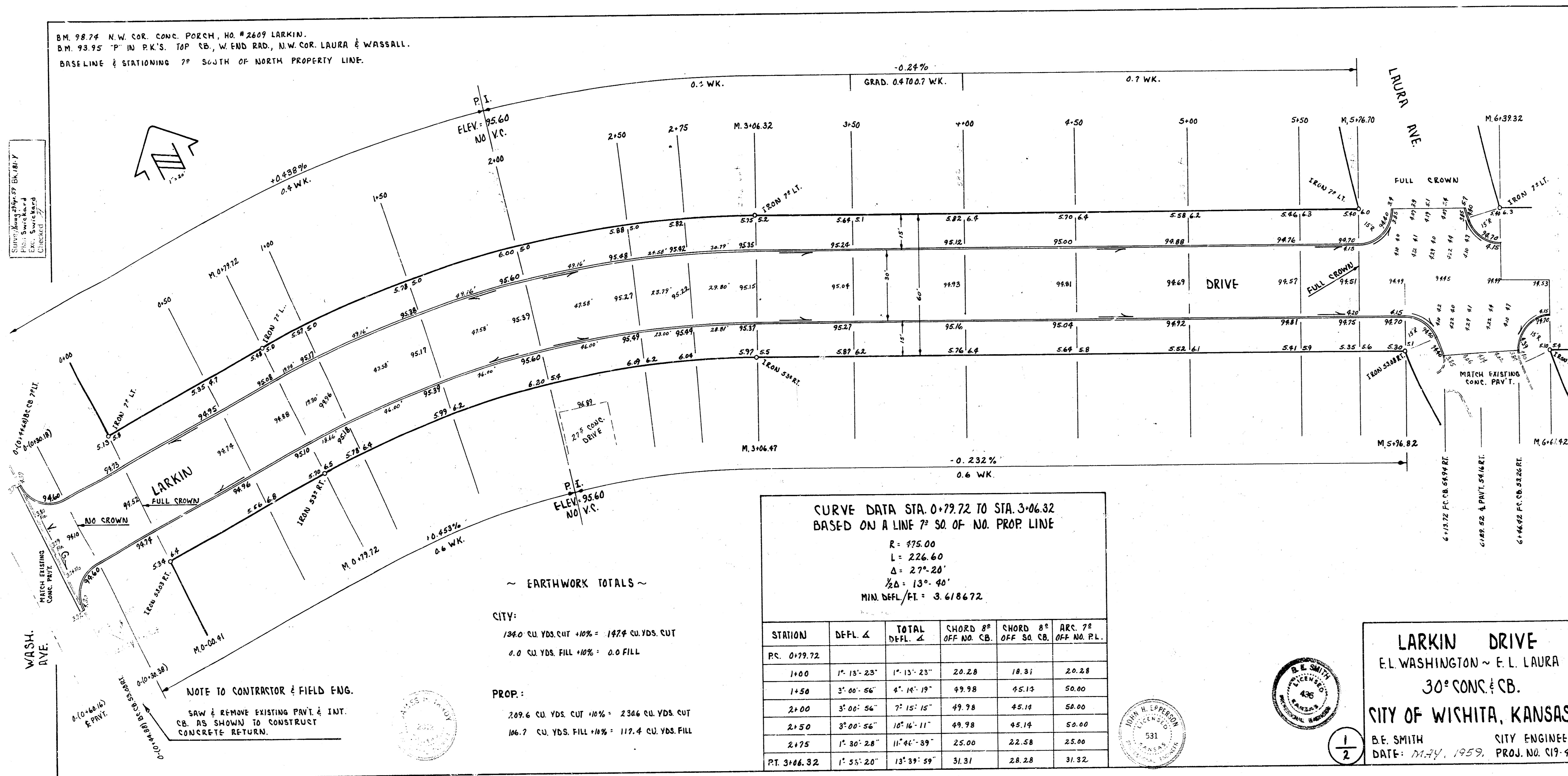


B.M. 98.74 N.W. COR. CONC. PORCH, HO. #2609 LARKIN.  
 B.M. 93.95 "P" IN P.K.'S. TOP CB., W. END RAD., N.W. COR. LAURA & WASSALL.  
 BASELINE & STATIONING 7' SOUTH OF NORTH PROPERTY LINE.



~ EARTHWORK TOTALS ~

CITY:  
 136.0 CU. YDS. CUT +10% = 147.4 CU. YDS. CUT  
 0.0 CU. YDS. FILL +10% = 0.0 FILL

PROP:  
 209.6 CU. YDS. CUT +10% = 230.6 CU. YDS. CUT  
 106.7 CU. YDS. FILL +10% = 117.4 CU. YDS. FILL

NOTE TO CONTRACTOR & FIELD ENG.  
 SAW & REMOVE EXISTING PAVT. & INT. CB. AS SHOWN TO CONSTRUCT CONCRETE RETURN.

CURVE DATA STA. 0+79.72 TO STA. 3+06.32  
 BASED ON A LINE 7' SO. OF NO. PROP. LINE  
 R = 475.00  
 L = 226.60  
 Δ = 27° 20'  
 1/2 Δ = 13° 40'  
 MIN. DEFL./FT. = 3.618672

STATION	DEFL. Δ	TOTAL DEFL. Δ	CHORD 8" OFF NO. CB.	CHORD 8" OFF SO. CB.	ARC 7' OFF NO. P.L.
P.C. 0+79.72					
1+00	1° 13' 23"	1° 13' 23"	20.28	18.31	20.28
1+50	3° 00' 56"	4° 16' 19"	49.98	45.12	50.00
2+00	3° 06' 56"	7° 15' 15"	49.98	45.12	50.00
2+50	1° 30' 28"	10° 46' 39"	25.00	22.58	25.00
P.T. 3+06.32	1° 55' 20"	13° 39' 59"	31.31	28.28	31.32

LARKIN DRIVE  
 E. L. WASHINGTON ~ E. L. LAURA  
 30" CONC. & CB.  
 CITY OF WICHITA, KANSAS  
 B.E. SMITH CITY ENGINEER  
 DATE: 11.24, 1959. PROJ. NO. 519-47



1/2