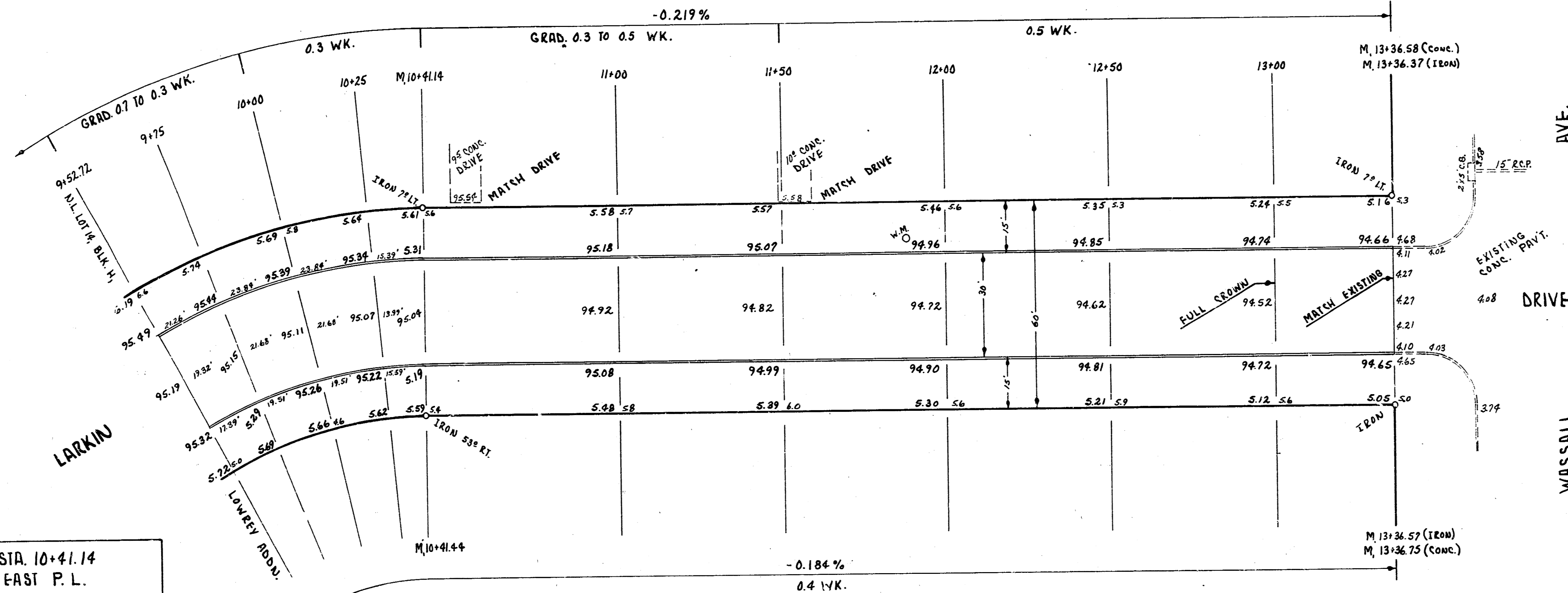


B.M. 2874 N.W. COR. CONC. PORCH, HO. # 2609 LARKIN.  
 B.M. 93.95 "P" IN P.K.'S, TOP CB, W. END RAD, N.W. COR. LAURA & WASSALL.  
 BASE LINE & STATIONING 7' WEST OF EAST PROPERTY LINE.



CURVE DATA STA. 8+50.97 TO STA. 10+41.14  
 BASED ON A LINE 7' WEST OF EAST P.L.  
 R = 173.00  
 L = 190.17  
 Δ = 62° 59'  
 1/2 Δ = 31° 29' 30"  
 MIN. DEFL./FT. = 9.785660

STATION	DEFL. Δ	TOTAL DEFL. Δ % @ P.C.	CHORD 8' OFF E. C.B.	CHORD 8' OFF W. C.B.	ARC 7' OFF E. P.L.
9+52.72					
9+75	3° 41' 22"	20° 32' 20"	22.26	14.39	22.28
10+00	6° 08' 24"	24° 40' 44"	4.98	18.39	25.00
10+25	6° 08' 24"	28° 49' 08"	20.98	18.39	25.00
P.T. 10+41.14	2° 40' 22"	31° 29' 30"	16.18	11.86	16.19

~ PROPERTY EARTHWORK TOTALS ~

153.2 CU. YDS. CUT +10% = 168.5 CU. YDS. CUT  
 9.5 CU. YDS. FILL +10% = 10.5 CU. YDS. FILL



**LARKIN DRIVE**  
 N.L. WASSALL ~ N.L. LOT 14,  
 BLK. H, LOWREY ADDITION  
 30° CONC. & CB.  
**CITY OF WICHITA, KANSAS**  
 B.E. SMITH CITY ENGINEER  
 DATE: MAY, 1959. PROJ. NO. C19-49

1/2

Surveyed by B. E. Smith  
 Plan Checked  
 and Approved  
 Checked