

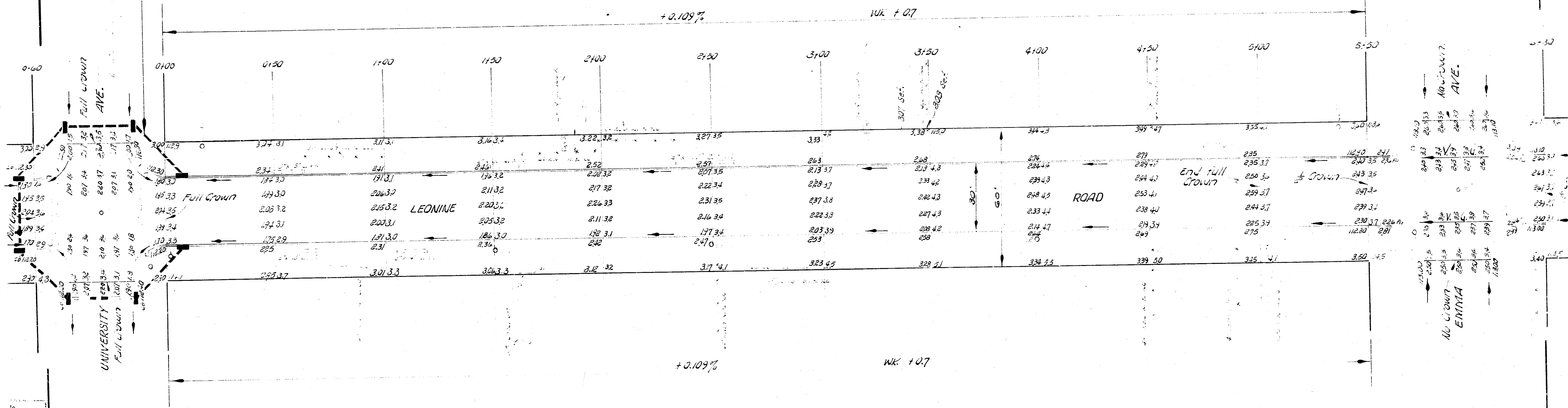
3" 11. 114.33 "M" in Mueller P. R. NE cor. Leonine & University.
 3" 11 117.10 316 cor. CONC. P.O. to 412 Leonine.
 Chain N. on E

NOTE TO CONTRACTOR:

All Entrance Pipes are to be disassembled in accordance with City Dirt Checkers instructions.

SCALE 1"=20'

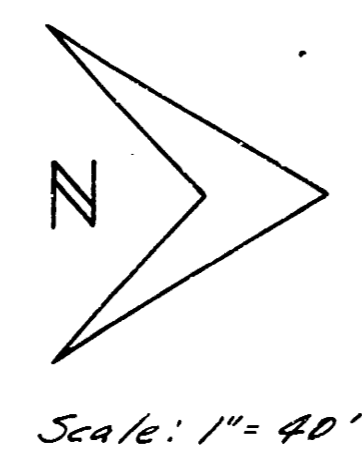
Proposed Incident at drainage for Leonine Road.



NOTE TO FIELD ENGINEER:

File this to all existing maps in intersections before construction and re-locate.

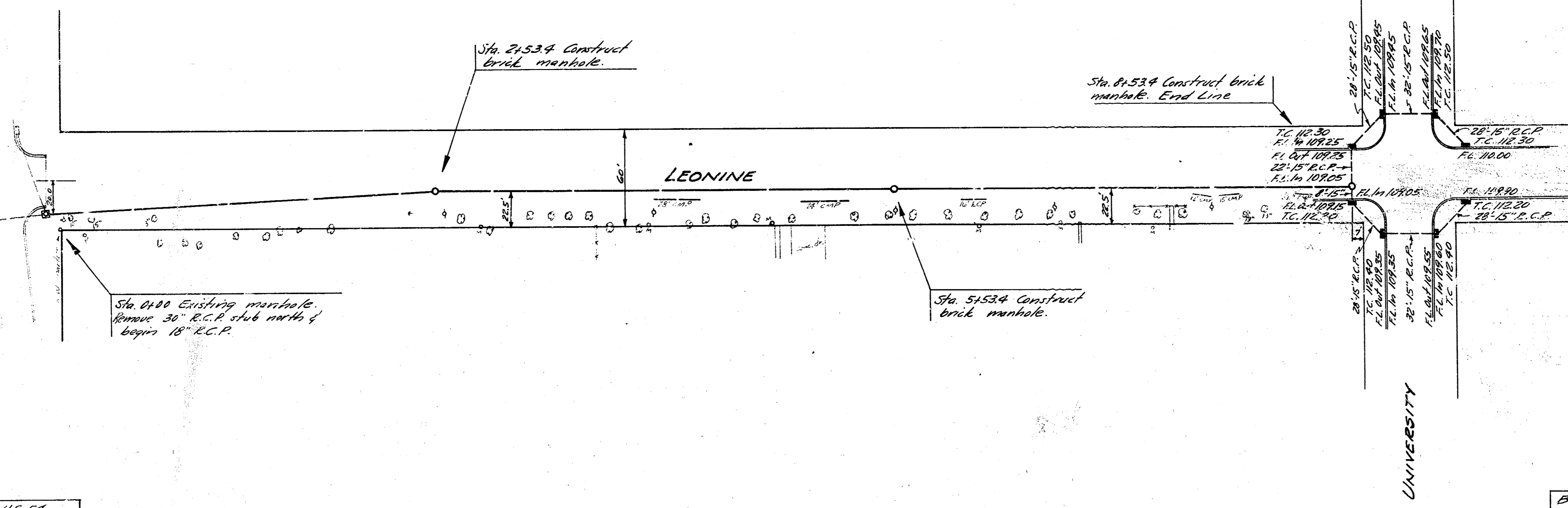
LEONINE ROAD
 SL MAPLE TO SL UNIVERSITY
 30' CONC. & CC.
 CITY OF WICHITA, KANSAS
 B. E. SMITH CITY ENGINEER
 MAY 1958



Scale: 1" = 40'

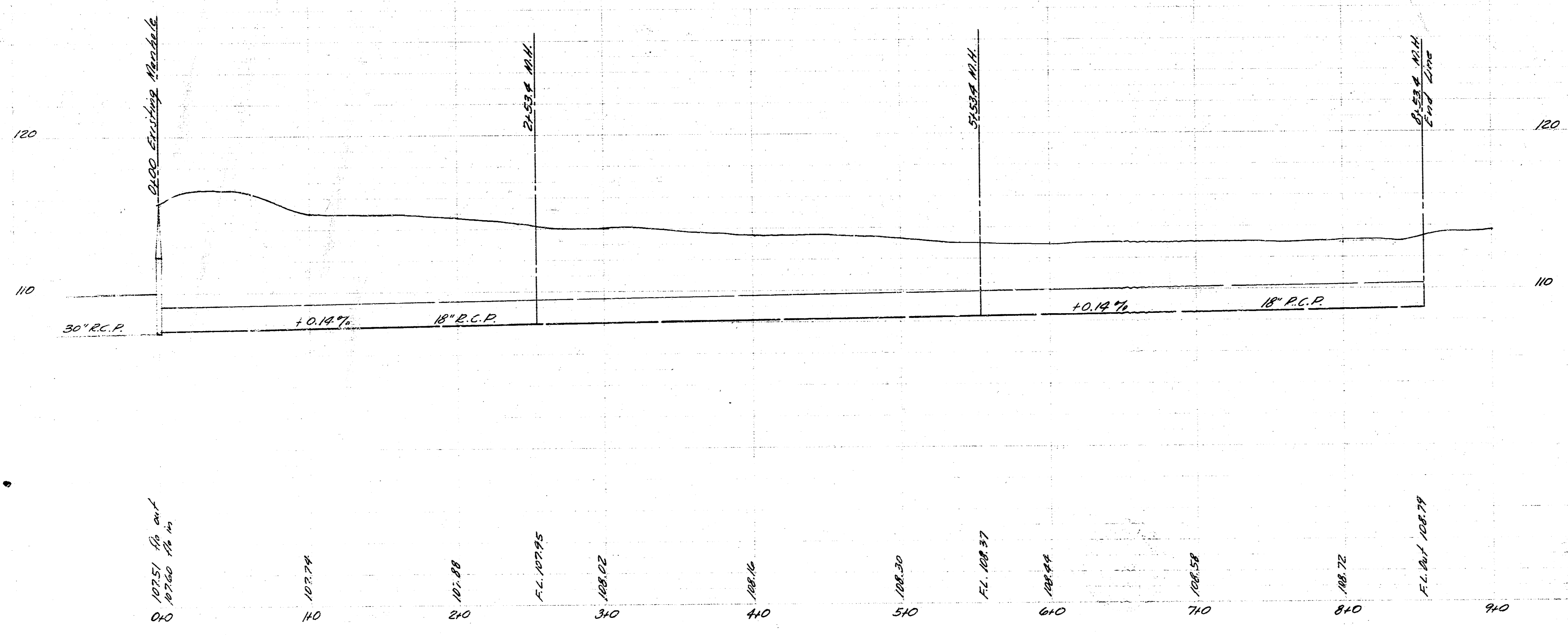
NOTE: Bid of sand fill is to include cost of flushing ditch, where sand is used. If excavated material is suitable for backfill, lined feet of flushing will be paid.

U.S. 54



B.M. 115.77 on N.C. U.S. 54 @ E. Sheridan St.

B.M. 114.83 in Mueller E.P. N.E. Cor. Leonine & University



INCIDENTAL DRAINAGE
LEONINE RD.
S.L. UNIVERSITY TO S.L. MAPLE
MAY, 1958 PROJECT C17-8