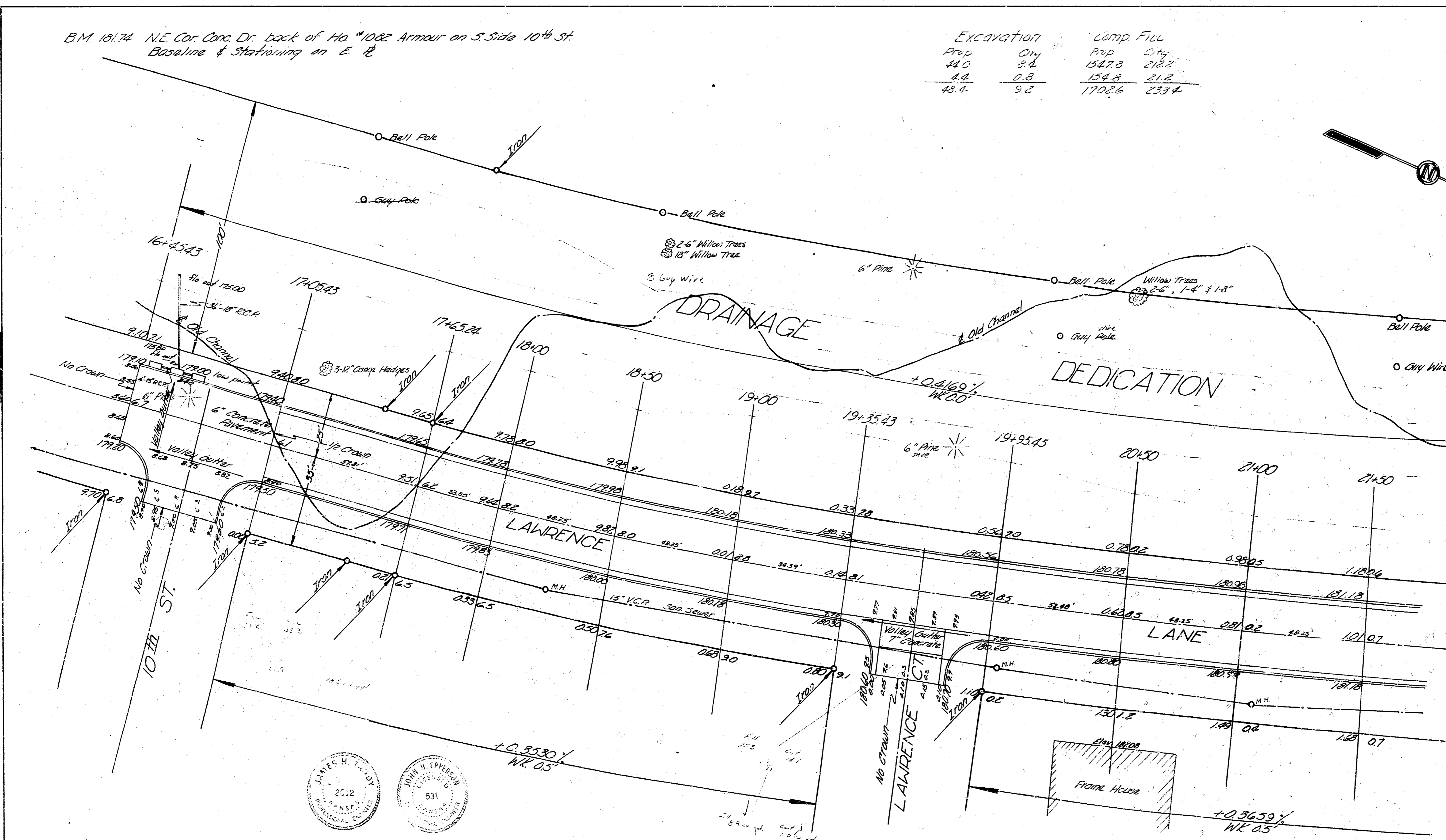
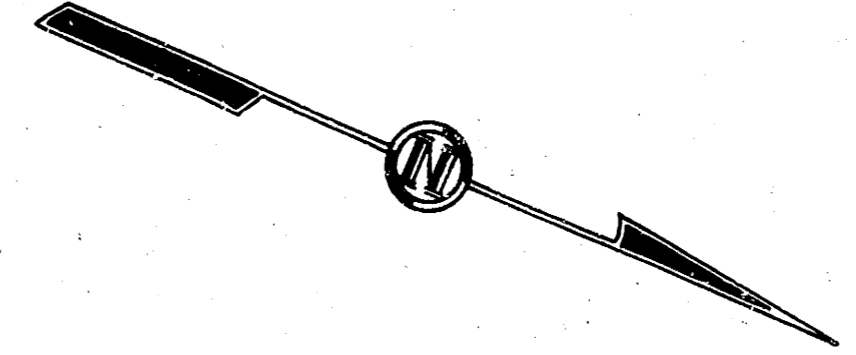


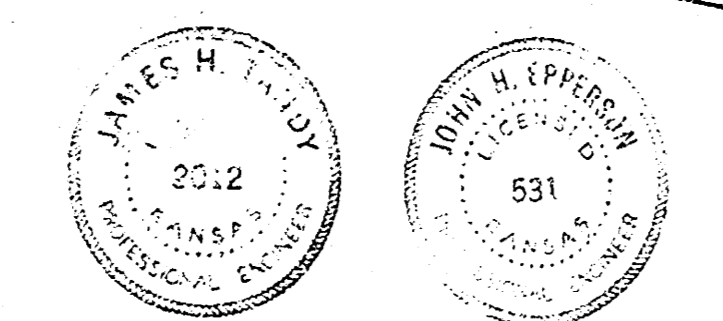
B.M. 181.74 N.E. Cor. Conc. Dr. back of Hqs. #1082 Armour on S. Side 10th St.
Baseline & Stationing on E. 12

Excavation		Lump Fill	
Prod	City	Prod	City
44.0	8.6	1587.8	218.2
8.8	0.8	158.8	21.2
52.8	9.4	1702.6	233.4



Checked by: J. Jones
 Date: 9-19-39
 Drawn by: J. Jones

Sheet 1 of 6



LAWRENCE LANE
 S.L. 10TH ST. - S.L. 13TH ST.
 26'-2'-30' A.C.
 CITY OF WICHITA, KANSAS
 B.E. SMITH CITY ENGINEER
 DATE: SEPT. 1939 PROJ. NO. C19-146

B.M. 18755 "1" Cut on SW Cor Top of NW Post, Conc. Bridge
East of Armour on 15th Street.

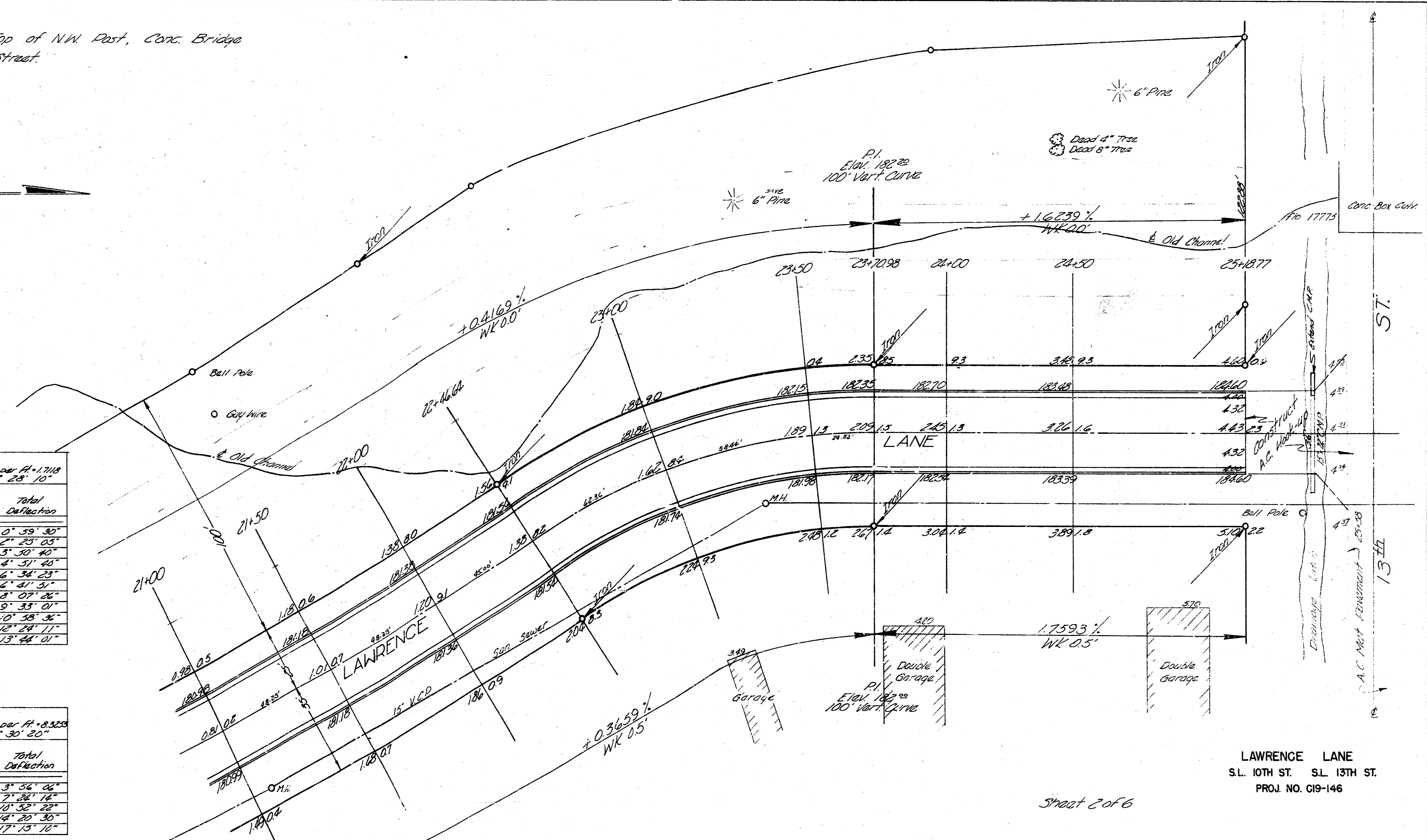


CURVE DATA
Sta 17+65.24 to Sta 23+70.99
E = 1804.11 E = 1829.40
Mile per Ft = 1.718
D = 27° 28' 10"

Stationing	Chord Length	Chord Length	Chord Length	Deflection	Total Deflection
on E. B	R=1008.11	R=982.71	R=966.11		
17+65.24					
18+00	34.76	34.34	33.75	0° 59' 30"	0° 59' 30"
18+50	30.00	29.59	29.10	1° 28' 35"	2° 28' 05"
19+00					3° 30' 40"
19+35.64	35.64	35.21	34.57	1° 01' 00"	4° 31' 40"
19+75.64	60.00	59.27	58.53	1° 42' 40"	6° 34' 20"
20+00	75.00	74.53	73.93	0° 07' 28"	6° 41' 51"
20+50	59.00	49.59	47.10	1° 25' 35"	8° 07' 26"
21+00					9° 33' 01"
21+50					10° 58' 36"
22+00					12° 24' 11"
22+46.24	46.24	46.07	45.94	1° 19' 50"	13° 44' 01"

CURVE DATA
Sta 23+46.64 to Sta 23+70.99
E = 206.46 E = 184.34
Mile per Ft = 0.325
D = 34° 30' 20"

Stationing	Chord Length	Chord Length	Chord Length	Deflection	Total Deflection
on E. B	R=206.46	R=218.84	R=244.64		
23+46.64					
23+75	28.36	29.98	36.30	3° 36' 06"	3° 36' 06"
23+00	25.00	26.44	32.00	3° 28' 08"	7° 04' 14"
23+25					10° 32' 22"
23+50					14° 20' 30"
23+70.99	24.35	22.19	22.84	2° 54' 40"	17° 15' 10"



LAWRENCE LANE
S.L. 10TH ST. S.L. 15TH ST.
PROJ. NO. C19-146

Sheet 2 of 6