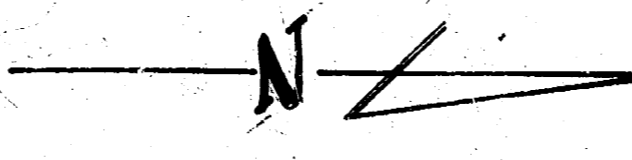


BM 170.18 R.R. SPIKE IN POWER POLE U.S. KELLOGG 50'E OF E.L. LEXINGTON
 NOTE: MEASUREMENTS ON 'Q' OFFSET FROM E.P.L.

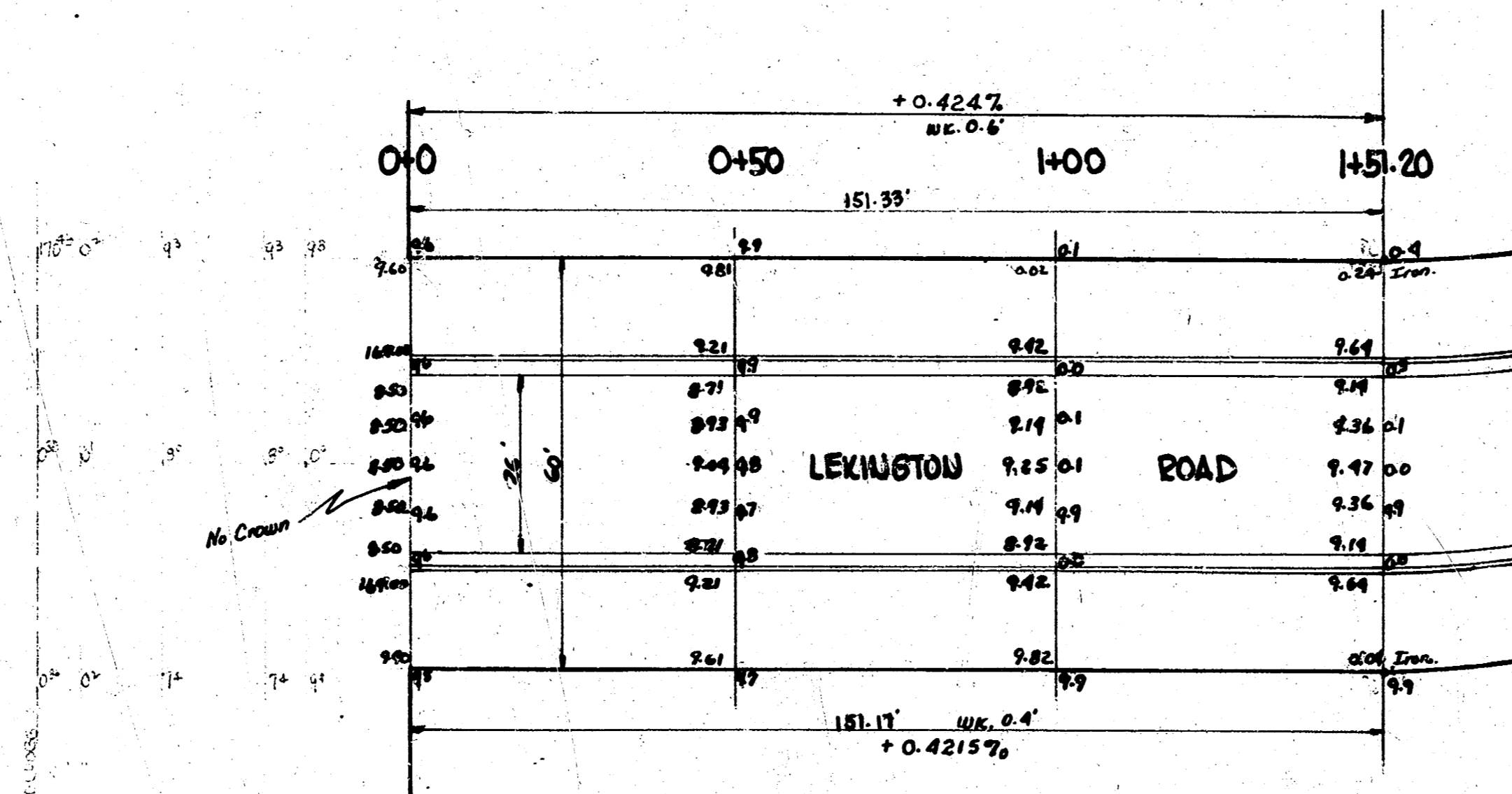


Total
 Property - 317.1 - 37.9 cu yds. Fill.
 145.4
 2531.5
 +108 = 2322.2
 2773.7 cu yds. Excavation

Property
 110.7
 146.5
 99.9
 317.1

City - 0

KELLOGG ST.



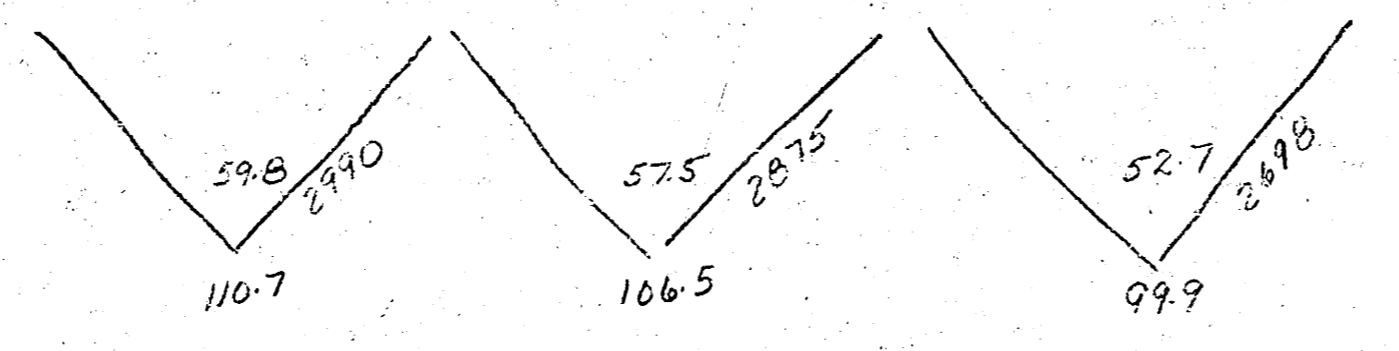
0+00
 0+25
 0+50
 0+75
 1+00
 1+25
 1+50
 1+52.0

57
 41.1
 1.5
 48.3

46
 47.8
 4.6
 52.0

55
 47.7
 9.8
 58.0

45
 52.4
 5.9
 61.3



Curve Data

Rad. = 380.26 Δ 52° 01' Def. 36° 00' 30"
 $\frac{1718.8192}{380.26} = 4.520247$
 PC = 11+51.2
 4.520247 x 488 = 220.5880

210	3° 40' 35"
	3° 46' 01"
215	7° 24' 36"
	3° 46' 01"
310	11° 35'
	3° 46' 01"
	14° 58' 38"
	3° 46' 01"
410	18° 49' 39"
	3° 46' 01"
415	22° 30' 40"
	4° 45' 26' 00"

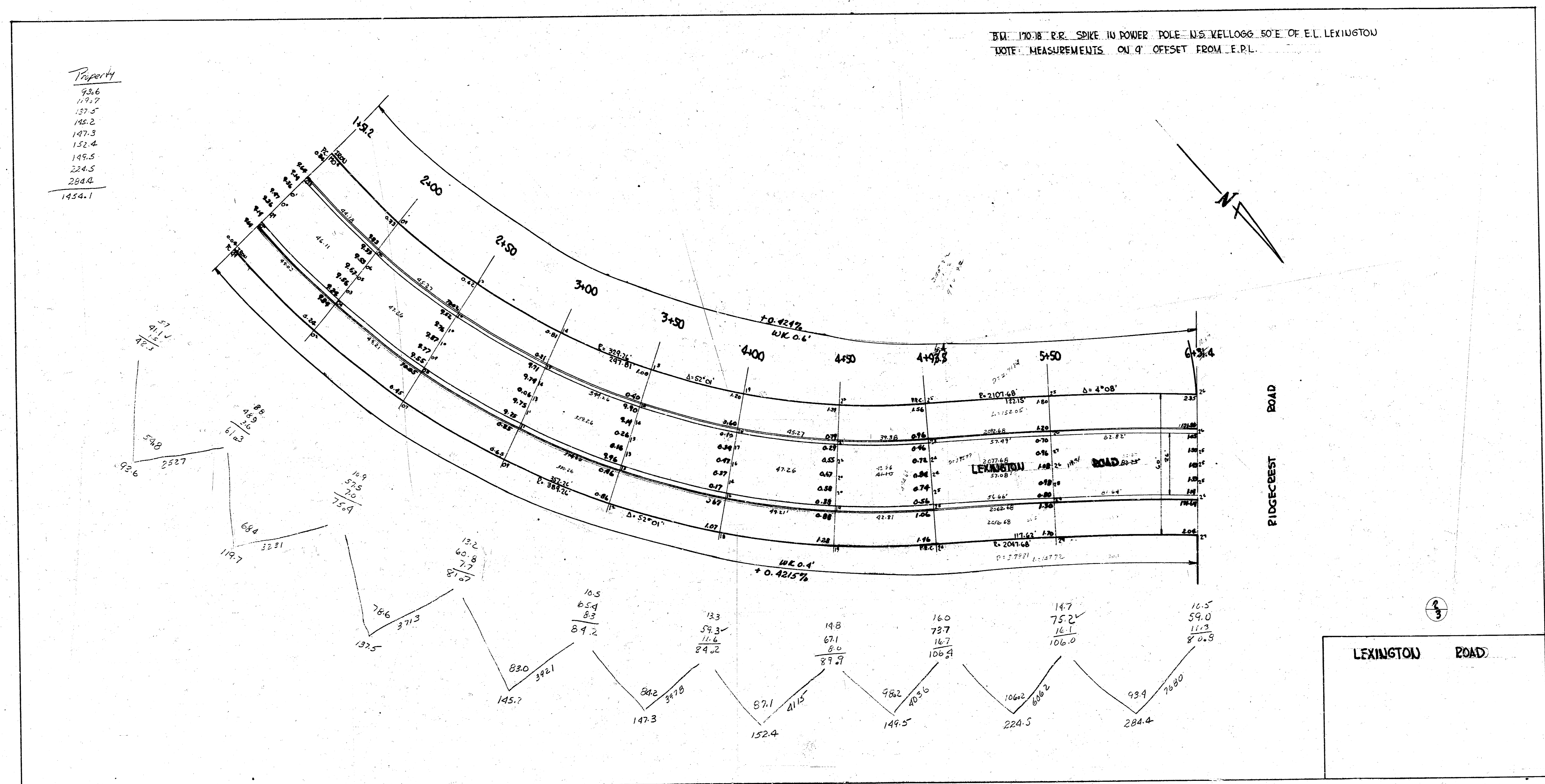


LEXINGTON ROAD
 EL EDGEMOOR NE KELLOGG
 26-2-30 AC
 CITY OF WICHITA, KANS.
 LK WHITE CITY ENGINEER
 AUGUST 1950 C10-103

g.T. = 55

BL. 170.8 R.R. SPIKE IN POWER POLE W.S. KELLOGG 50'E. OF E.L. LEXINGTON
NOTE: MEASUREMENTS ON 4' OFFSET FROM E.P.L.

Property
93.6
179.7
157.5
145.2
147.3
152.4
149.5
224.5
284.4
1454.1



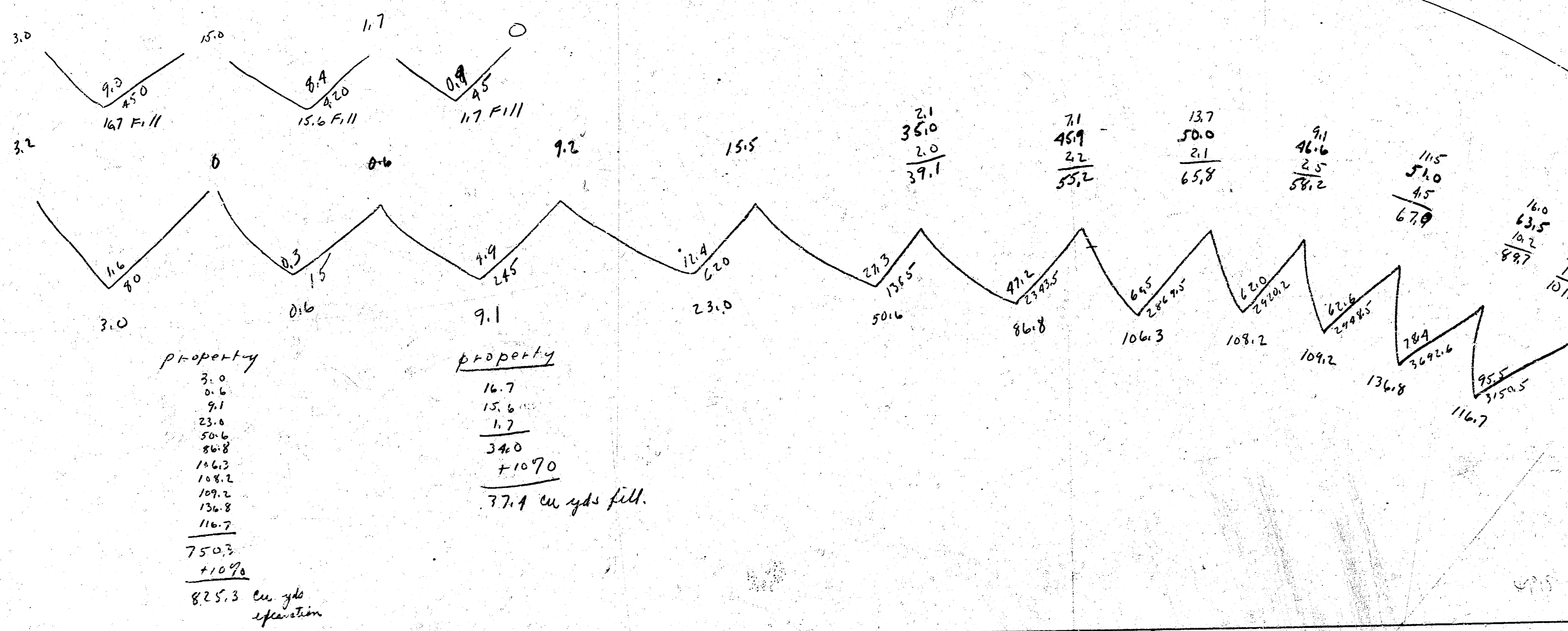
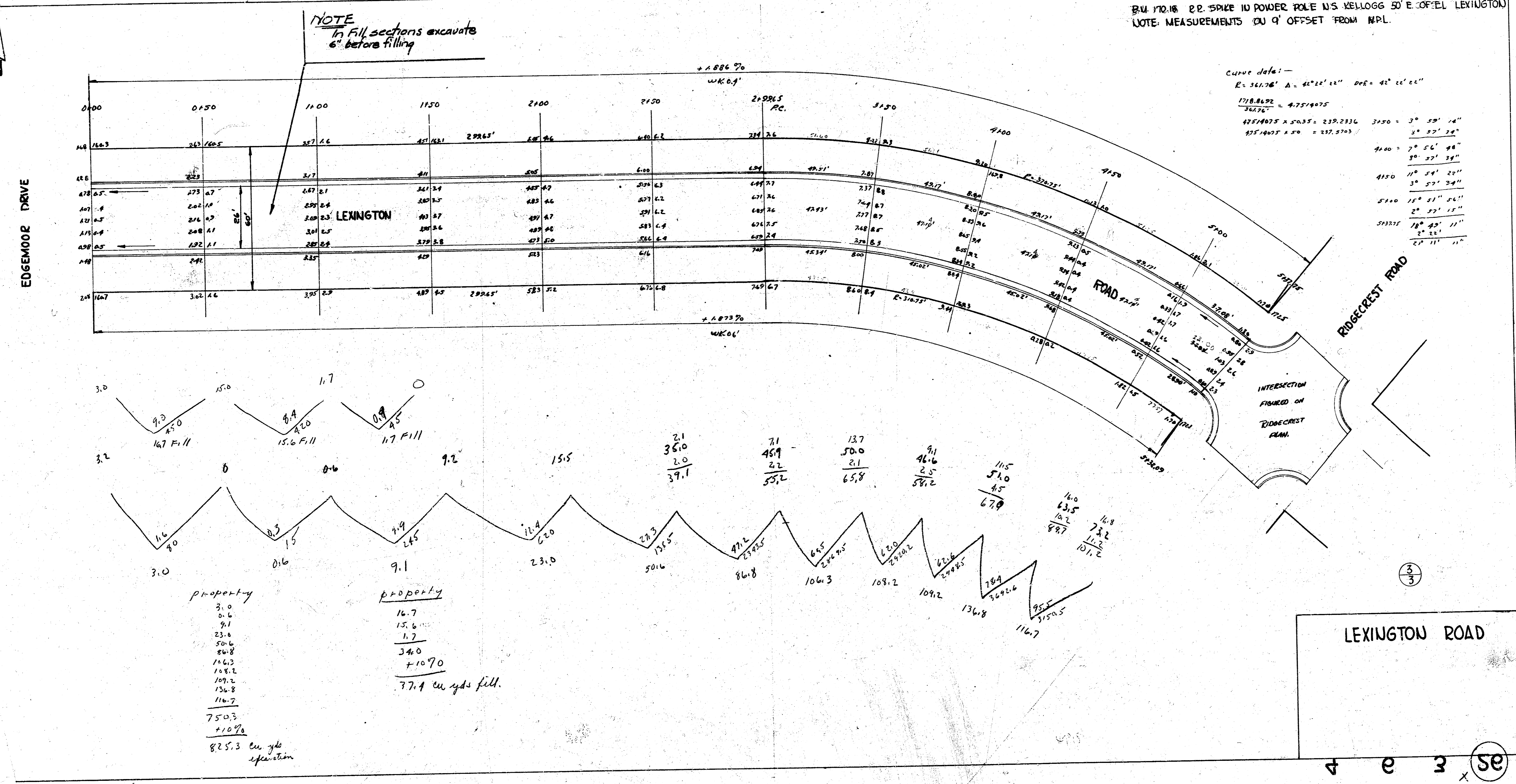
11' 42" 29'

Bk 55T

NOTE
In Fill sections excavate
6" before filling

BLK 170.18 22.5" SPIKE IN POWER POLE N/S KELLOGG 50' E. CORNER LEXINGTON
NOTE: MEASUREMENTS TO 'O' OFFSET FROM MPL.

Curve data:-
E = 361.76' A = 41° 22' 14" DEL = 45° 22' 14"
1718.662 = 4.7519075
455.4075 x 50.55 = 230.2336 3450 = 3° 59' 14"
455.4075 x 50 = 227.70375 3450 = 3° 52' 28"
455.4075 x 50 = 227.70375



Property
3.0
0.6
9.1
23.0
50.6
86.8
106.3
108.2
109.2
136.8
116.7
750.3
+10.90
825.3 cu yds excavation

Property
16.7
15.6
1.2
340
+1070
77.4 cu yds fill.

LEXINGTON ROAD

4 e 3 x 35