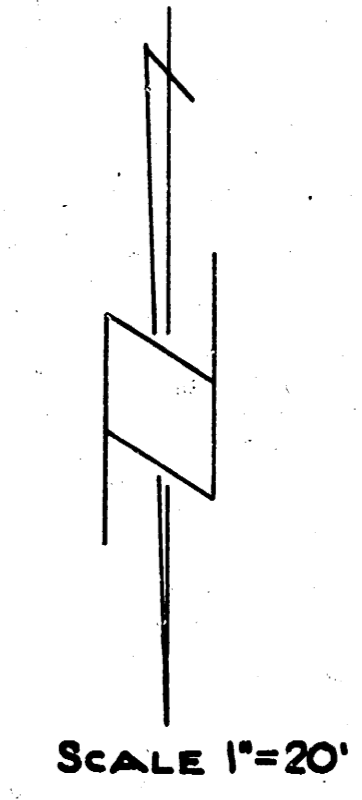
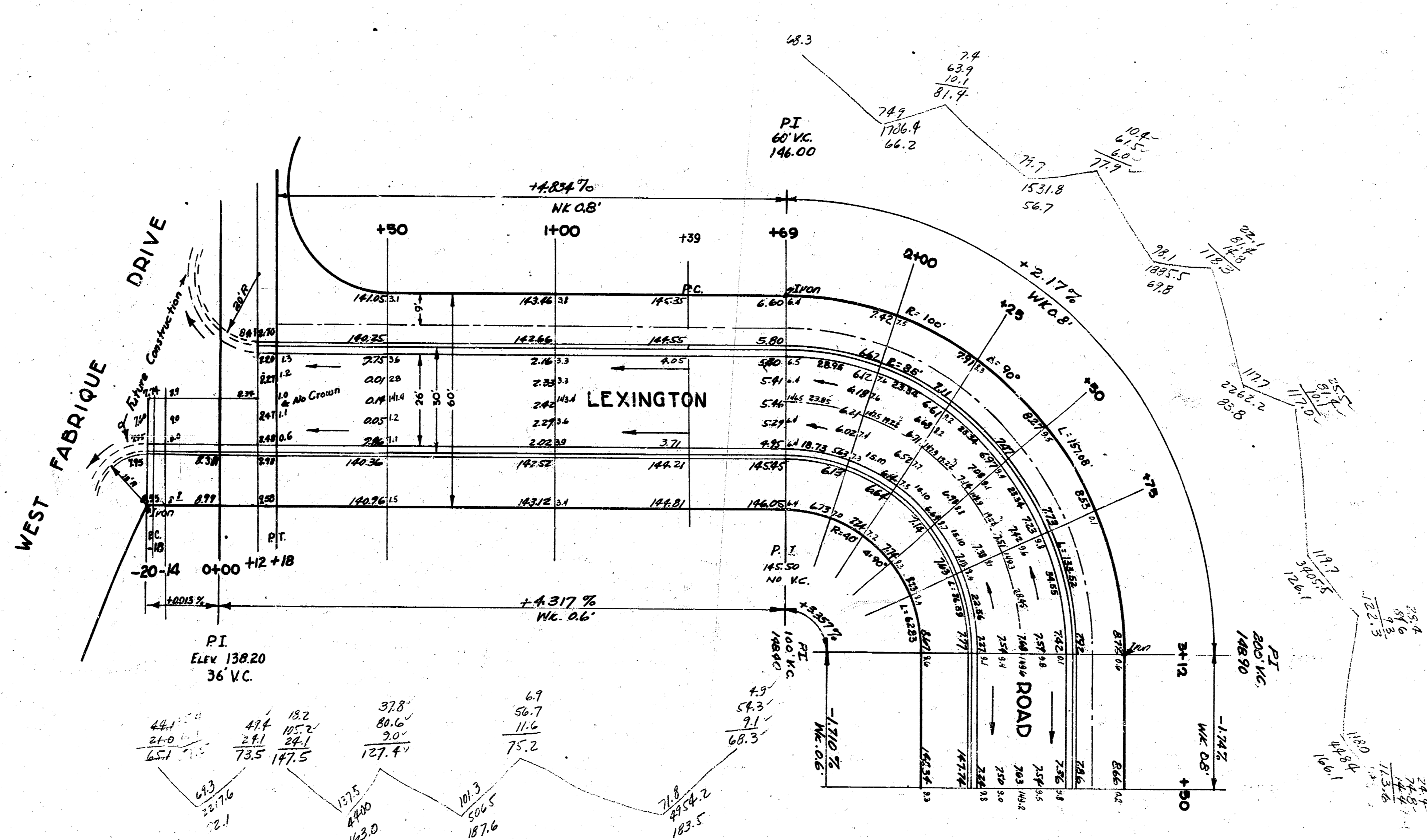


BM. 155.50 S.E. Cor. Porch Nos. # 5838 Castle Dr.
NOTE: Stationing on 9.0' offset N. of S.R.L.

Exc.
PROP CITY
2689.9
+107.0
2796.9 cu. yds.

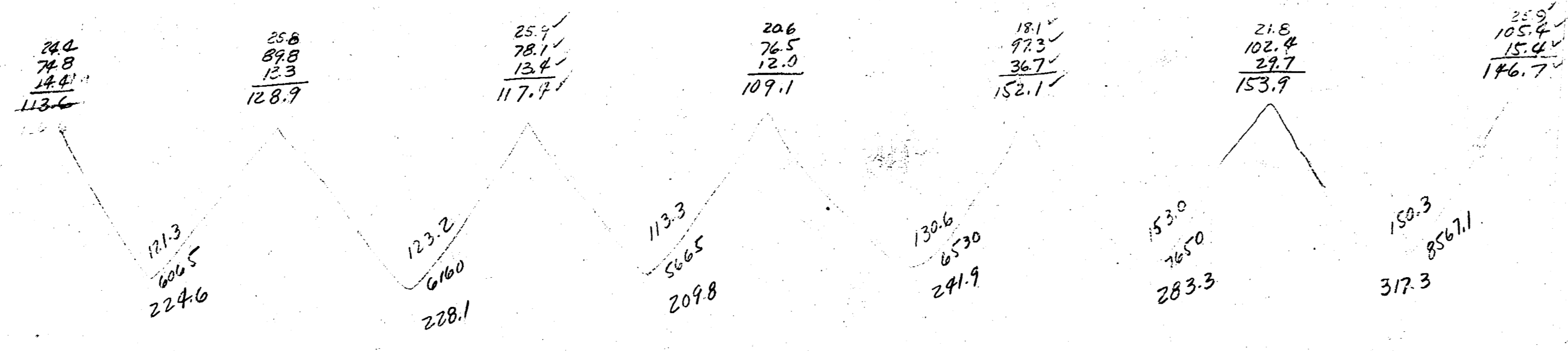
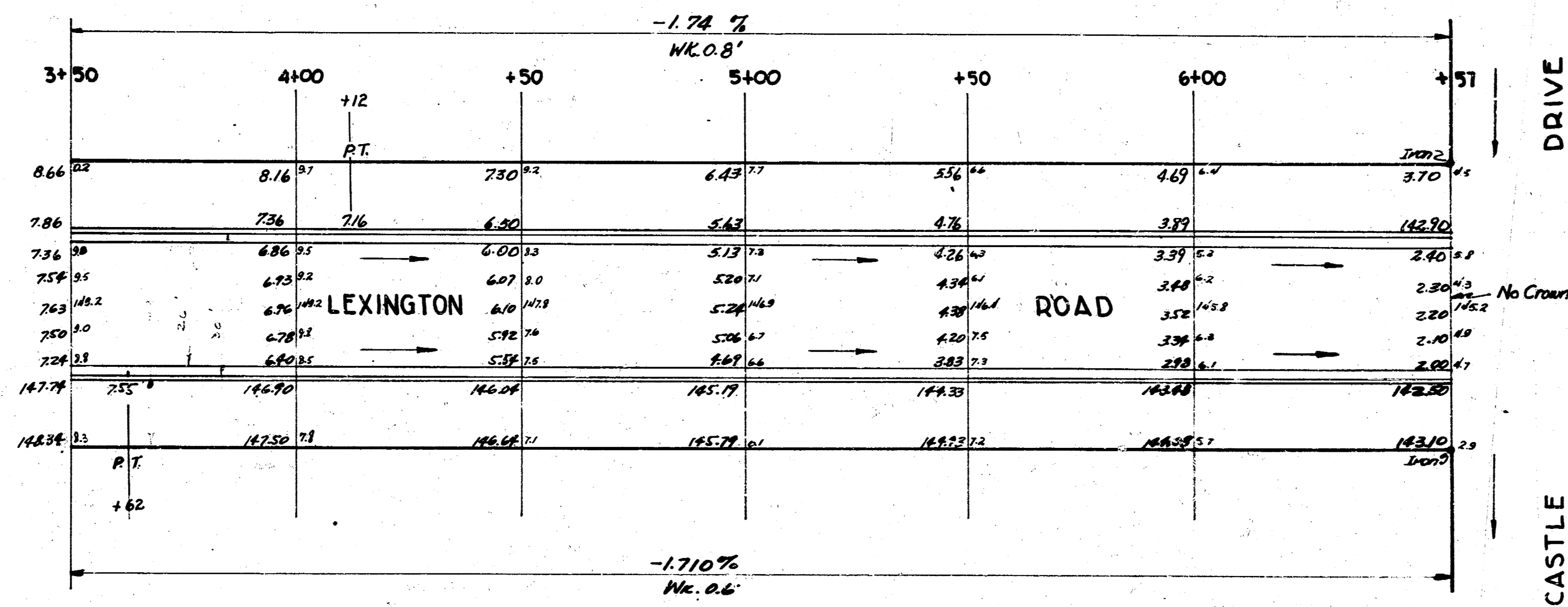
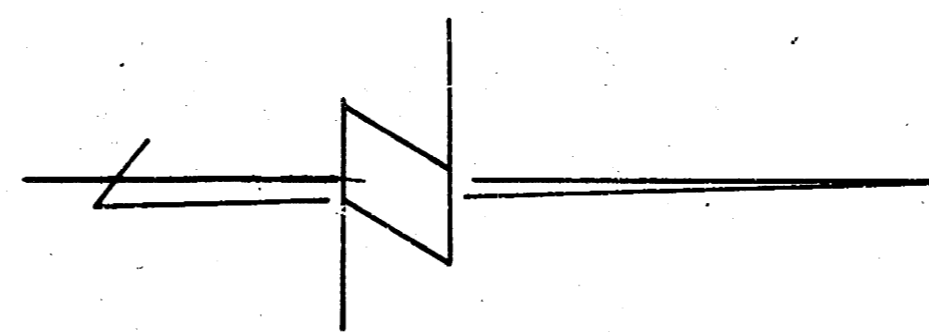


1
2

REVISED 1-25-52

LEXINGTON ROAD
W. WEST FABRIQUE TO S.E. CASTLE DR.
26-2-30 AC.
CITY OF WICHITA, KANSAS
L.K. WHITE CITY ENGINEER
OCT. 1951 PROJ. NO. C11-168





2
2

LEXINGTON ROAD

