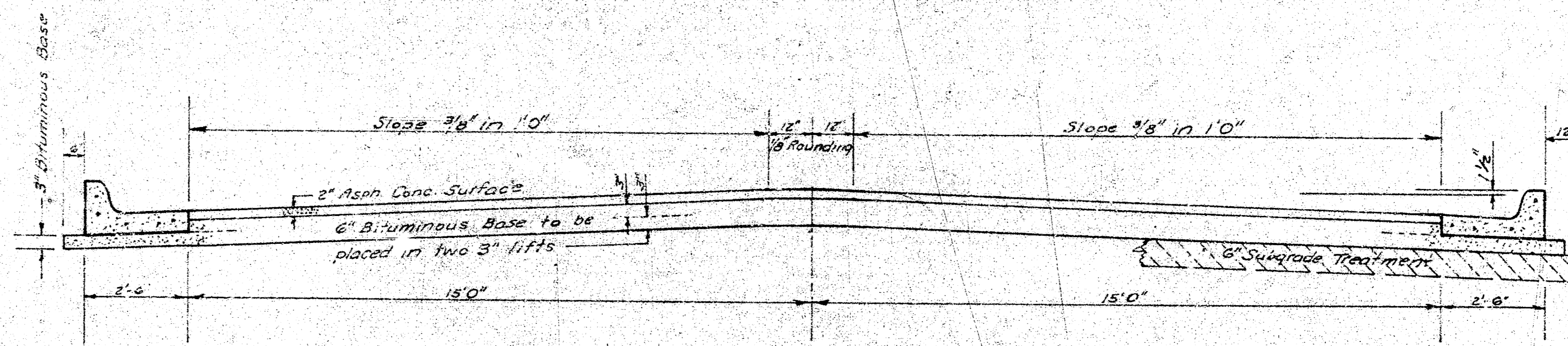


**LINCOLN COURT**  
 IN BLK. 2, QUAIL MEADOWS FIRST ADDITION  
 S. L. LINCOLN TO AND INCLUDING CUL-DE-SAC  
 30'-2"-34' ASPH. CONC.  
 PROJ. NO. DAKS574017



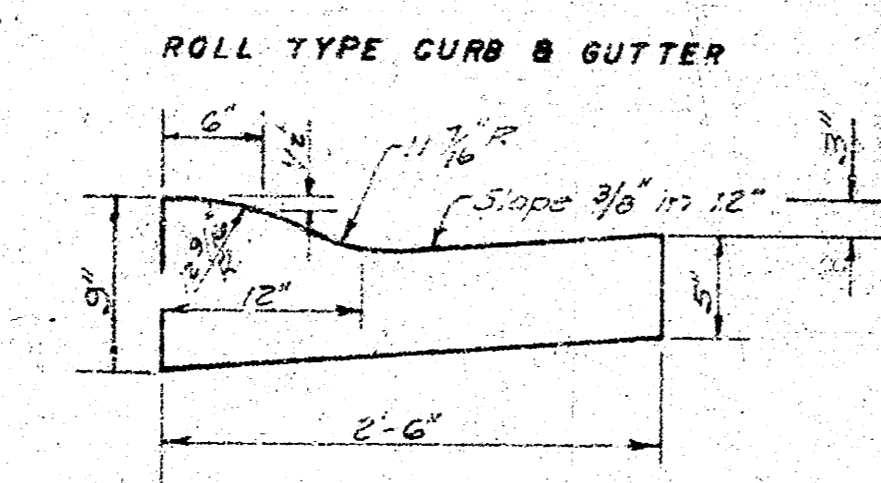
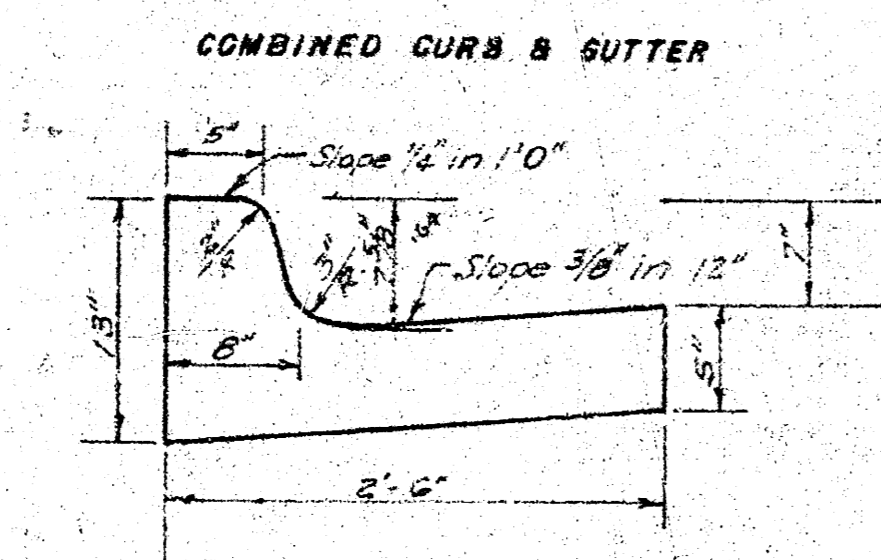
**TYPICAL SECTION**

**35' ASPHALTIC CONCRETE PAVEMENT WITH BITUMINOUS BASE**

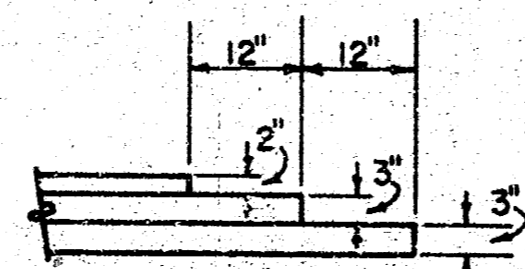
A TACK COAT OF EMULSIFIED ASPHALT (SS-1H) SHALL BE APPLIED AT AN APPROXIMATE RATE 0.05 GALLONS PER SQ YD BETWEEN LIFTS OF ASPHALTIC MATERIALS WHEN ORDERED BY THE ENGINEER. TACK COAT WILL NOT BE PAID FOR DIRECTLY AND SHALL BE CONSIDERED AS SUBSIDIARY TO PRICE BID FOR ASPHALTIC PAVEMENT.

BITUMINOUS BASE AND ASPHALTIC CONCRETE WEARING SURFACE SHALL BE PLACED WITH A LAYDOWN MACHINE HAVING AUTOMATIC ELECTRONIC CONTROLS FOR CROWN AND GRADE. CONSTRUCTION JOINTS IN EACH LIFT SHALL BE STAGGERED A MINIMUM DISTANCE OF 1' WITH JOINTS IN PRECEDING LIFTS AND PLACED SUCH THAT A JOINT WILL BE CONSTRUCTED ON THE CENTERLINE IN THE TOP LIFT.

*The A.C. Pavement between the comb curb & gutter shall be paid as Sq. Yds. 8" A.C. Pavement (6" Bituminous Base).  
 The Bit. inous Base under the comb curb & gutter shall be paid as Sq. Yds. 3" Bituminous Base.*



**DETAIL OF TRANSVERSE CONSTRUCTION JOINT**



TRANSVERSE CONSTRUCTION JOINTS SHALL BE CONSTRUCTED IN FLEXIBLE BASE INVERTERS AT LOCATIONS WHERE PAVEMENT TEMPORARILY ENDS TO FACILITATE FUTURE INVERTER CONSTRUCTION AS SHOWN IN DETAILS. THE GUE OF SUPERSEDED PAVEMENT TRANSVERSE CONSTRUCTION JOINTS SHALL NOT BE MEASURED OR PAID FOR HERETOX THE SHALL BE INCLUDED IN THE PWD PRICE FOR SQUARE YARDS OF ASPHALTIC CONCRETE INVERTER.



**CITY OF WICHITA KANSAS**

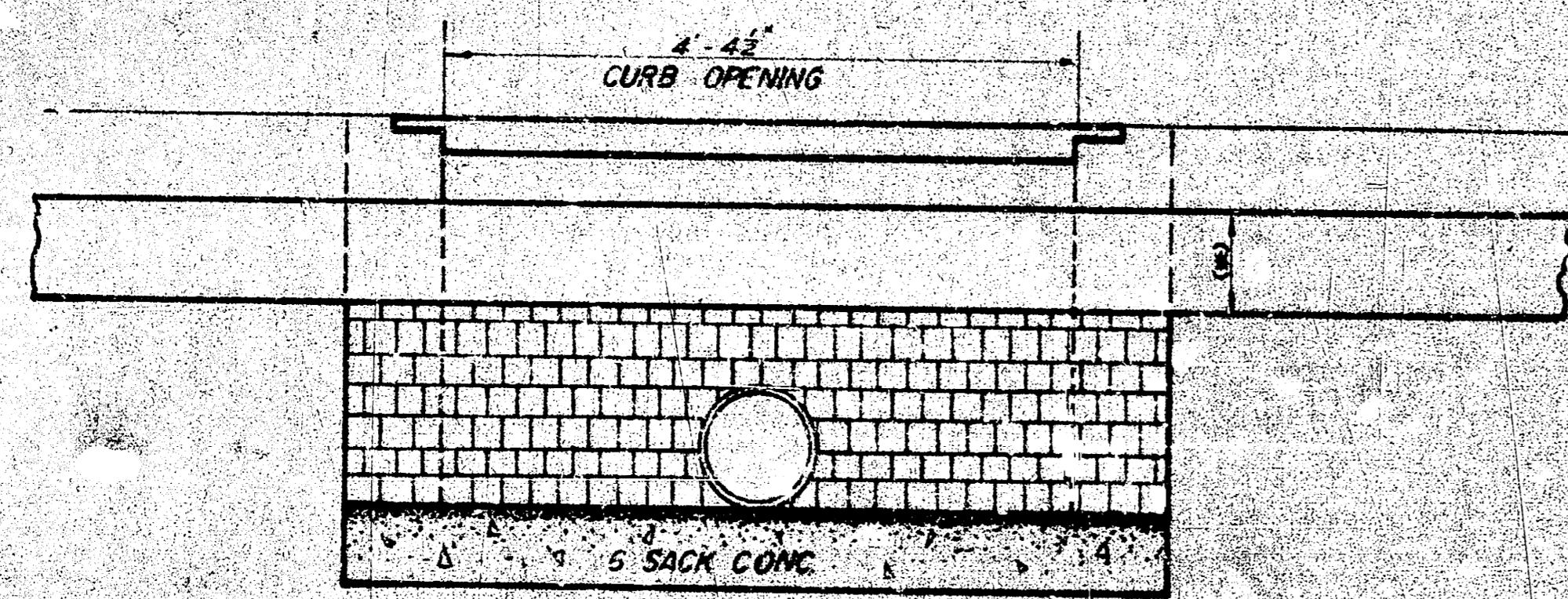
DEPARTMENT of PUBLIC WORKS - Engineering  
 Division.

R. W. LINN CITY ENGINEER

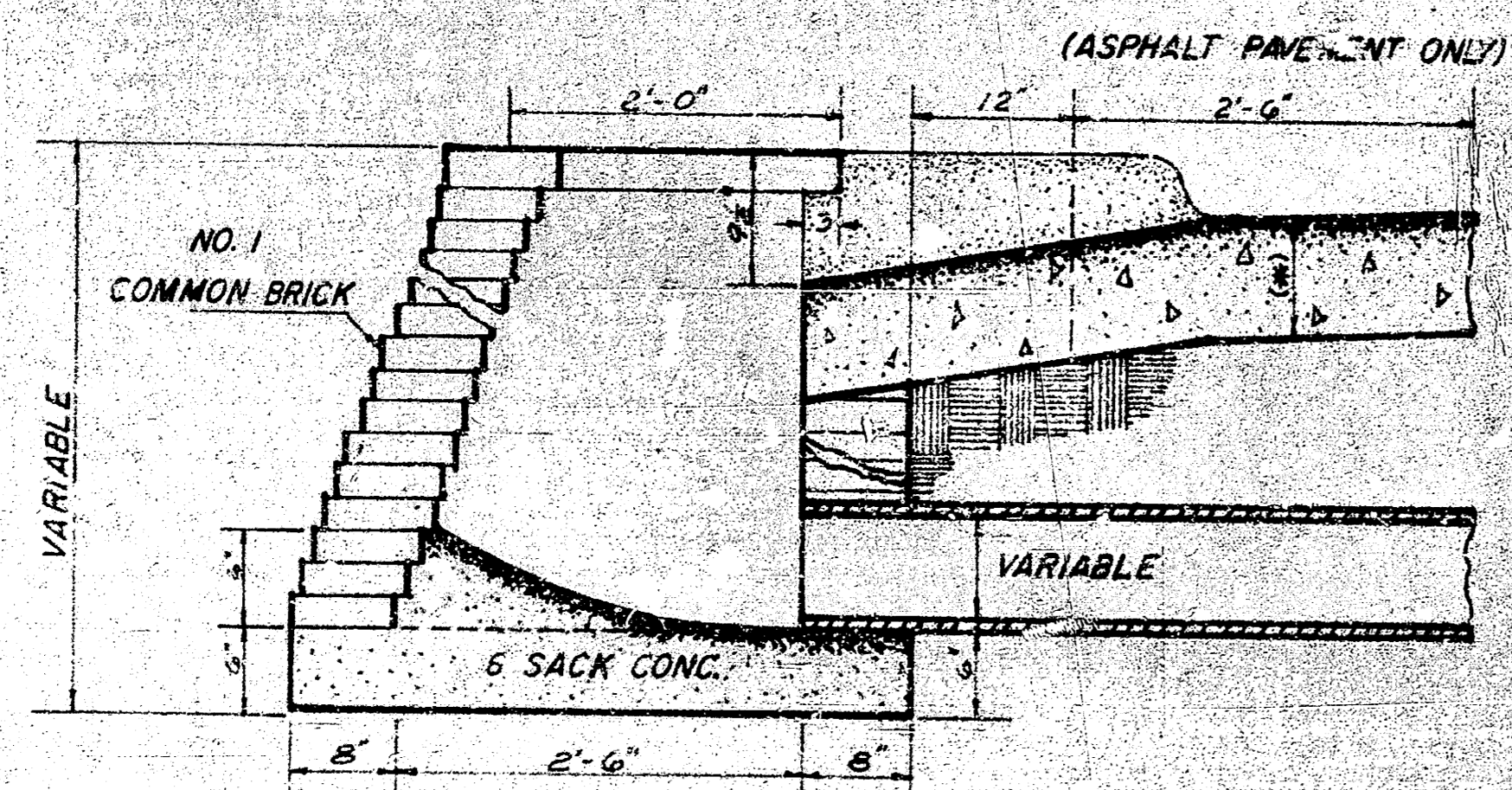
DATE \_\_\_\_\_ Proj. No. \_\_\_\_\_

1/4

THIS TYPE INLET TO BE USED  
WHEN PAVEMENT IS ASPHALT  
PAVEMENT WITH ASPHALT  
BASE COURSE AND/OR WHEN  
PAVEMENTS HAVE ROLL CURB.



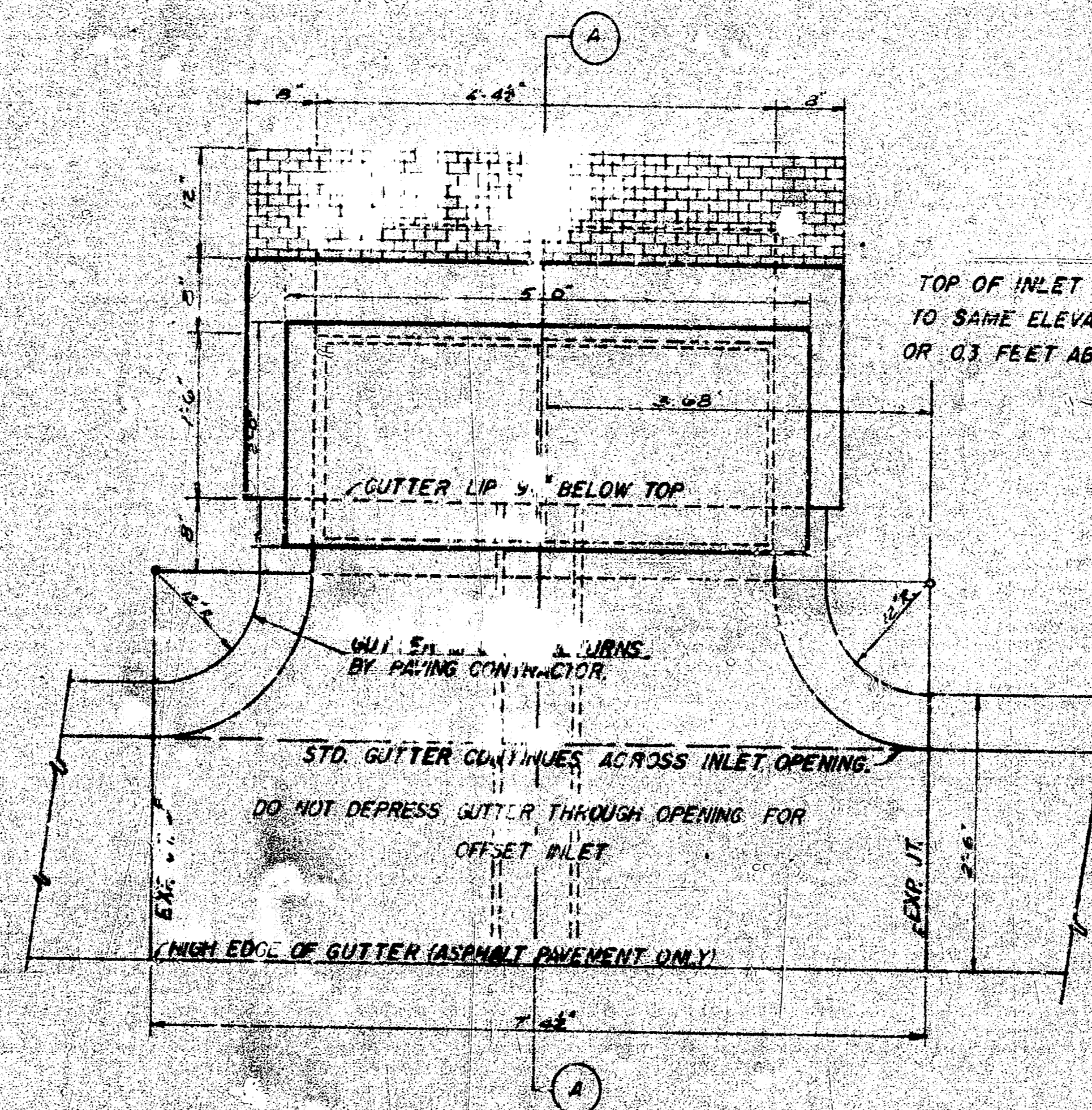
ELEVATION



SECTION THRU INLET  
2x5' INLET DETAIL  
SCALE 1/4"=1'-0"

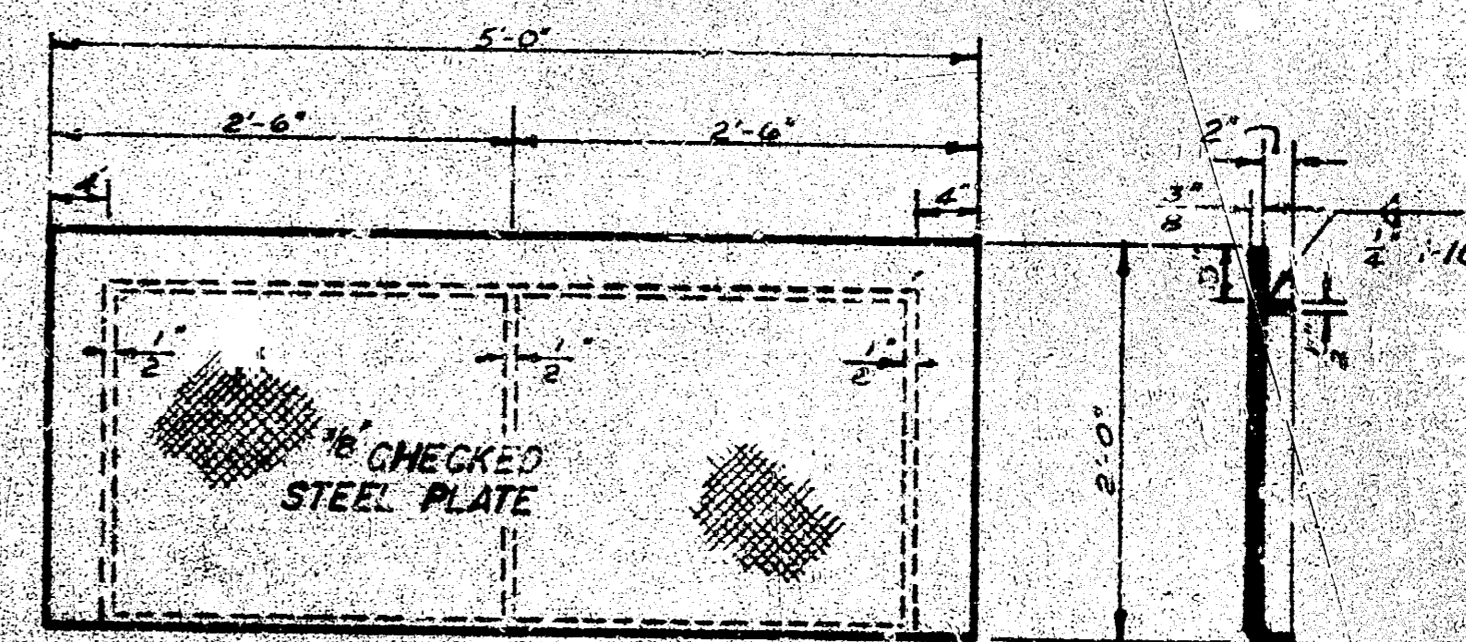
NOTE: BRICK FOR INLET CONSTRUCTION SHALL CONFORM WITH THE LATEST REVISION OF THE AMERICAN SOCIETY FOR TESTING AND MATERIALS DESIGNATION C32 FOR MANHOLE BRICK GRADE MS.

(\*) CURB & GUTTER OR PAVEMENT THICKNESS



PLAN

TOP OF INLET TO BE CONSTRUCTED TO SAME ELEVATION AS STANDARD CURB OR 0.3 FEET ABOVE ROLL CURB.



PLAN

SECTION

ELEVATION

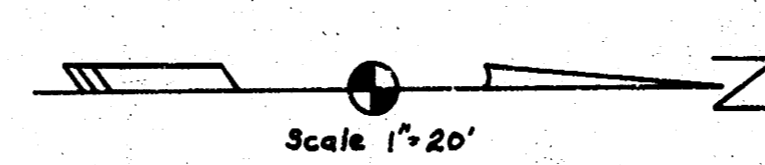
CITY OF WICHITA  
STEEL INLET COVER  
WEIGHT-206 LBS.  
SHOP PAINT-BLACK ASPH.  
SCALE 1/4"=1'-0"

DETAIL  
STANDARD 2x5' INLET  
(SET BACK LOCATION)

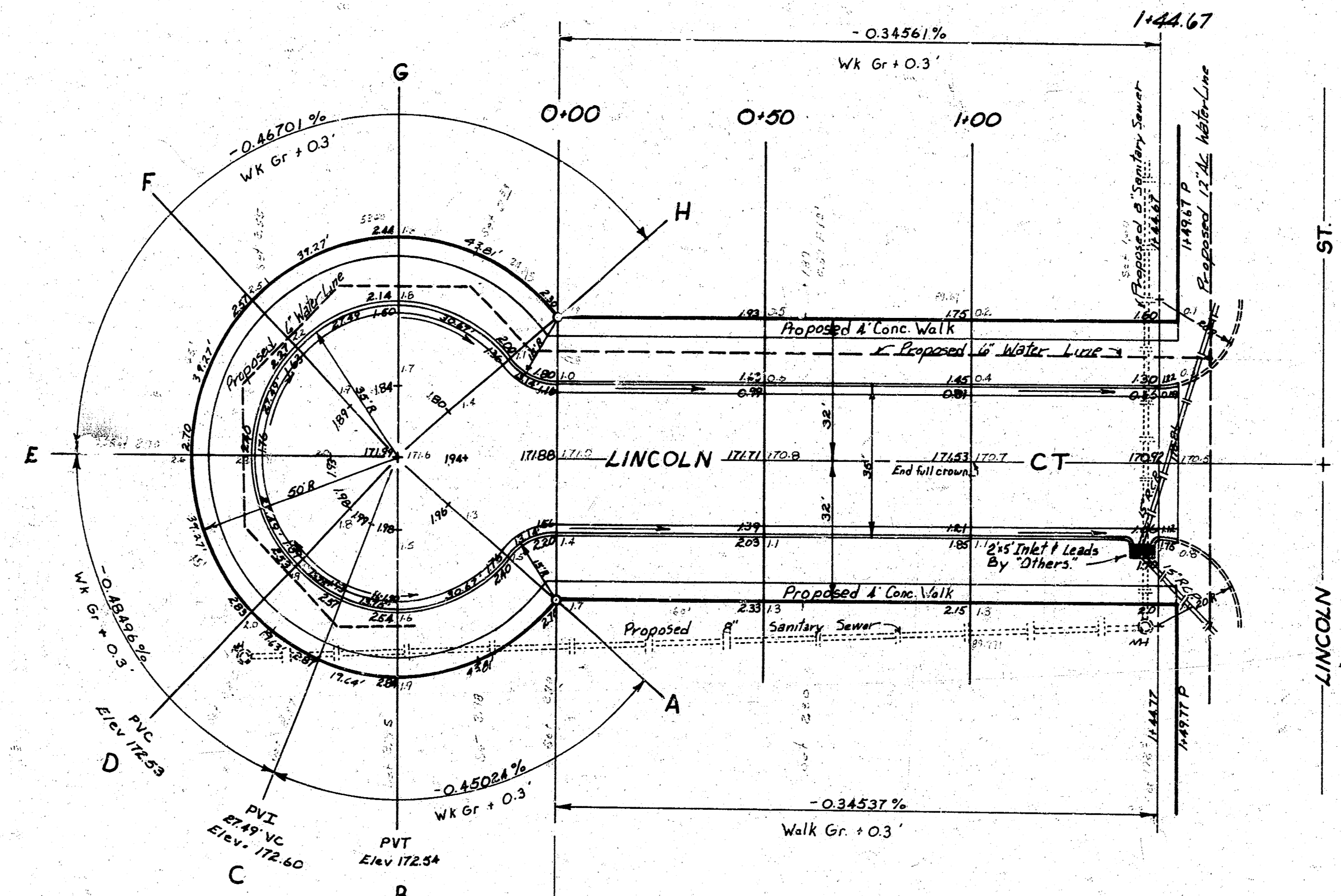
CITY OF WICHITA, KANSAS  
R. W. LINN CITY ENGINEER

JUNE 1974

Survey  
 Plans  
 E.C. Brown  
 Checked  
 D.V. Arp  
 6/1



BM 172.03 Webb Rd & Harry Cofw BM disc 48" S & 46" W of G both  
 BM 2 184.60 RR Spk top 12" guard P. E. side Webb Rd app. 100' N of N.L. Bedell  
 BM 3 174.71 RR Spk E side cor post app. 50' E of 1/4 sec cor Lincoln & Webb Rd.



NOTE: FIELD ENGINEER IS TO DETERMINE THE TYPE OF SUBGRADE TREATMENT WHICH IS TO BE USED. SUBGRADE TREATMENT MAY CONSIST OF LIME TREATED SUBGRADE, CEMENT TREATED SUBGRADE, HE-COMPACTION OF EXISTING SUBGRADE MATERIAL AS SPECIFIED IN STANDARD SPECIFICATIONS, OR ANY COMBINATION OF THESE.

NOTE: CONTRACTOR TO CLEAR RIGHT OF WAY, GRADE FAREWAYS, AND CONSTRUCT COMPACTED FILL IN SIDEWALK AREAS WHERE NECESSARY. SIDEWALK TO BE CONSTRUCTED BY OTHERS.

NOTE TO FIELD ENGINEER AND CONTRACTOR:  
 LIME SLUDGE, WHICH IS A BY-PRODUCT OF AMMONIUM GAS PRODUCTION, MAY BE USED AS A STABILIZING AGENT IN PLACE OF HYDRATED LIME OR QUICK LIME WITH THE APPROVAL OF THE ENGINEER. COMPLETED CONSTRUCTION MUST BE EQUAL TO THAT WHICH COULD BE ACCOMPLISHED IF HYDRATED LIME OR QUICK LIME HAD BEEN USED.

**EARTHWORK**

Excavation		Compacted Fill	
City	0	City	0
+10%	0	+10%	0
Property	120.3 yd <sup>3</sup>	Property	66 yd <sup>3</sup>
+10%	135 yd <sup>3</sup>	+10%	75 yd <sup>3</sup>

All utility locations shown are approximate. Contractor to determine exact location in field.

**LINCOLN ST**  
 Blk. 2, Quail Meadows First Addition  
**30-2-34 ASPH. CONC.**  
 City of Wichita, Kansas  
 RW Linn, City Engineer  
 Project No. DAKS 574017

3/4