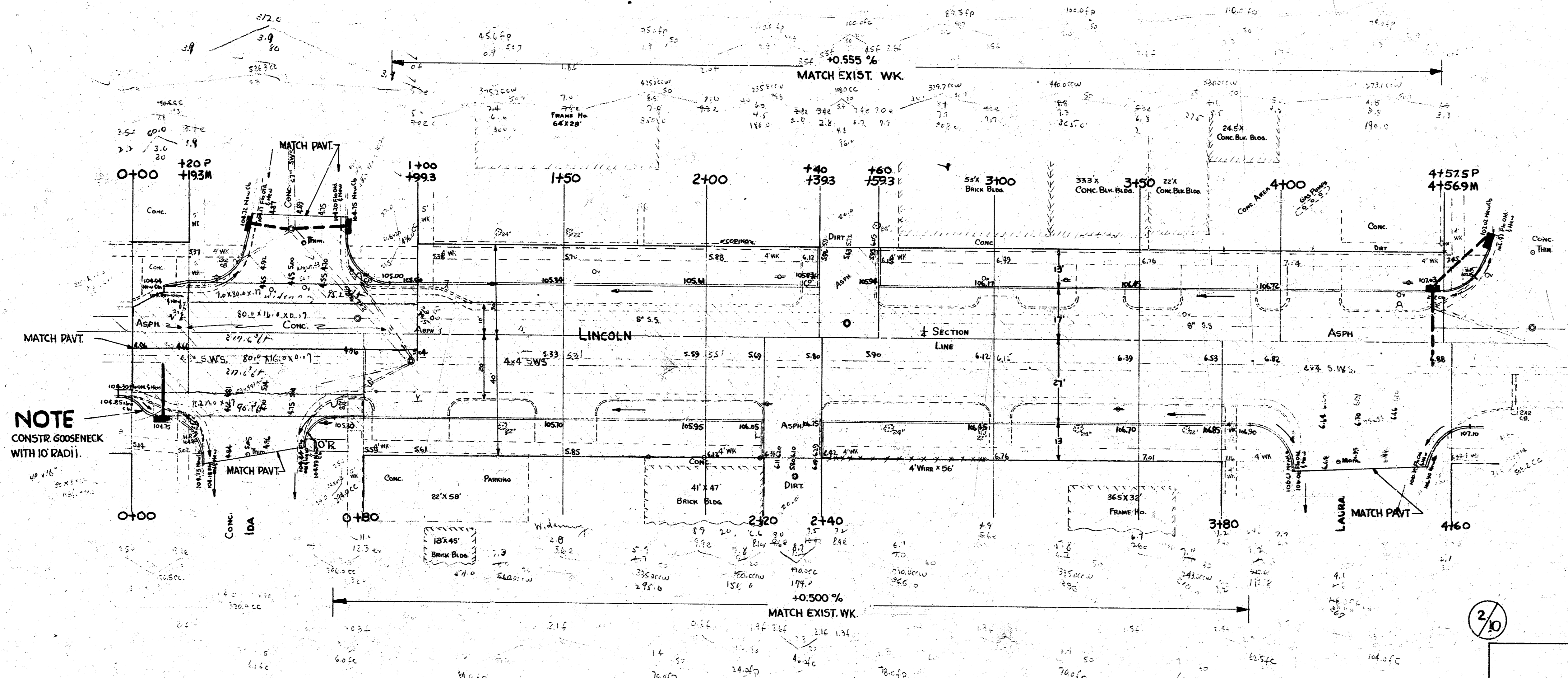
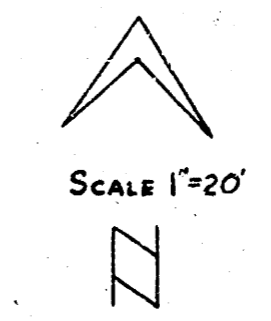


STA. PROPERTY N of Sec LINE STA ON BASE LINE 25' N of Sec LINE.
 PROPERTY S of Sec LINE STA ON BASE LINE 34' S of Sec LINE.
 B.M. 105.53 "B" IN BURRIS' W.S. INT. SE COR. 10A & LINCOLN.
 B.M. 108.43 "B" IN BALL W.S. INT. SE COR. PATTIE & LINCOLN.
 B.M. 107.30 "C" IN DALTON W.S. INT. SE COR. ELLIS & LINCOLN.
 B.M. 106.16 STAND. S.W. COR. HYDRAULIC & LINCOLN.

NOTE
 ALL RADII 15' EXCEPT AS NOTED.

NOTE
 PAVING CONTRACTOR WILL REMOVE PAVT PRIOR TO INCIDENTAL DRAINAGE. ALL METAL LIDS & FRAMES FROM INLETS WILL BE STACKED AT 10A FOR SUBSEQUENT REMOVAL BY STREET & SEWER DIV.



NOTE
 CONSTR. GOOSENECK WITH 10' RADII.

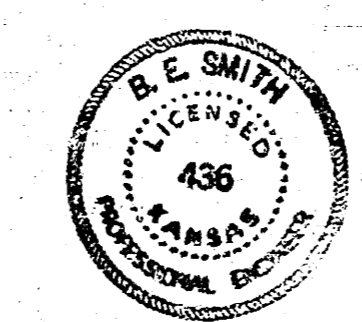
Mr. Colabated

Station	Excav	Clear	Grass	Total
0+00	2.5	1.5	1.5	5.5
0+20	2.5	1.5	1.5	5.5
0+40	2.5	1.5	1.5	5.5
0+60	2.5	1.5	1.5	5.5
0+80	2.5	1.5	1.5	5.5
1+00	2.5	1.5	1.5	5.5
1+20	2.5	1.5	1.5	5.5
1+40	2.5	1.5	1.5	5.5
1+60	2.5	1.5	1.5	5.5
1+80	2.5	1.5	1.5	5.5
2+00	2.5	1.5	1.5	5.5
2+20	2.5	1.5	1.5	5.5
2+40	2.5	1.5	1.5	5.5
2+60	2.5	1.5	1.5	5.5
2+80	2.5	1.5	1.5	5.5
3+00	2.5	1.5	1.5	5.5
3+20	2.5	1.5	1.5	5.5
3+40	2.5	1.5	1.5	5.5
3+60	2.5	1.5	1.5	5.5
3+80	2.5	1.5	1.5	5.5
4+00	2.5	1.5	1.5	5.5
4+20	2.5	1.5	1.5	5.5
4+40	2.5	1.5	1.5	5.5
4+60	2.5	1.5	1.5	5.5

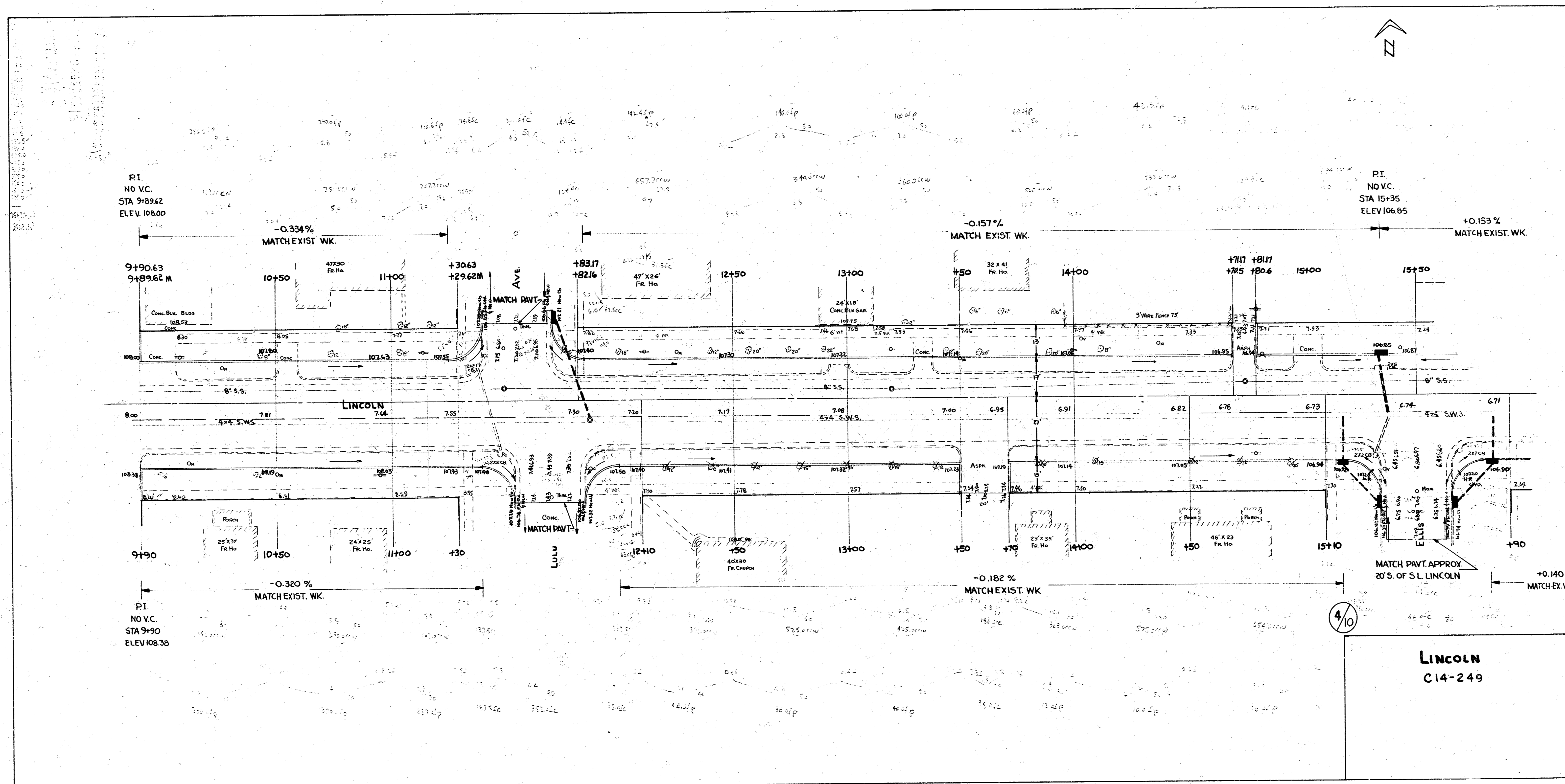
NOTE TO FIELD ENGR:
 Take ties to irons and monuments and replace same.

2/10

LINCOLN
 W.L. 10A TO W.L. HYDRAULIC AVE
 7'-30" CONC. CURB - 8" WIDEN TO 44'
 CITY OF WICHITA, KANSAS
 BESMITH CITY ENGINEER
 FEBRUARY 1956 Proj. No. C14-248
 C14-249



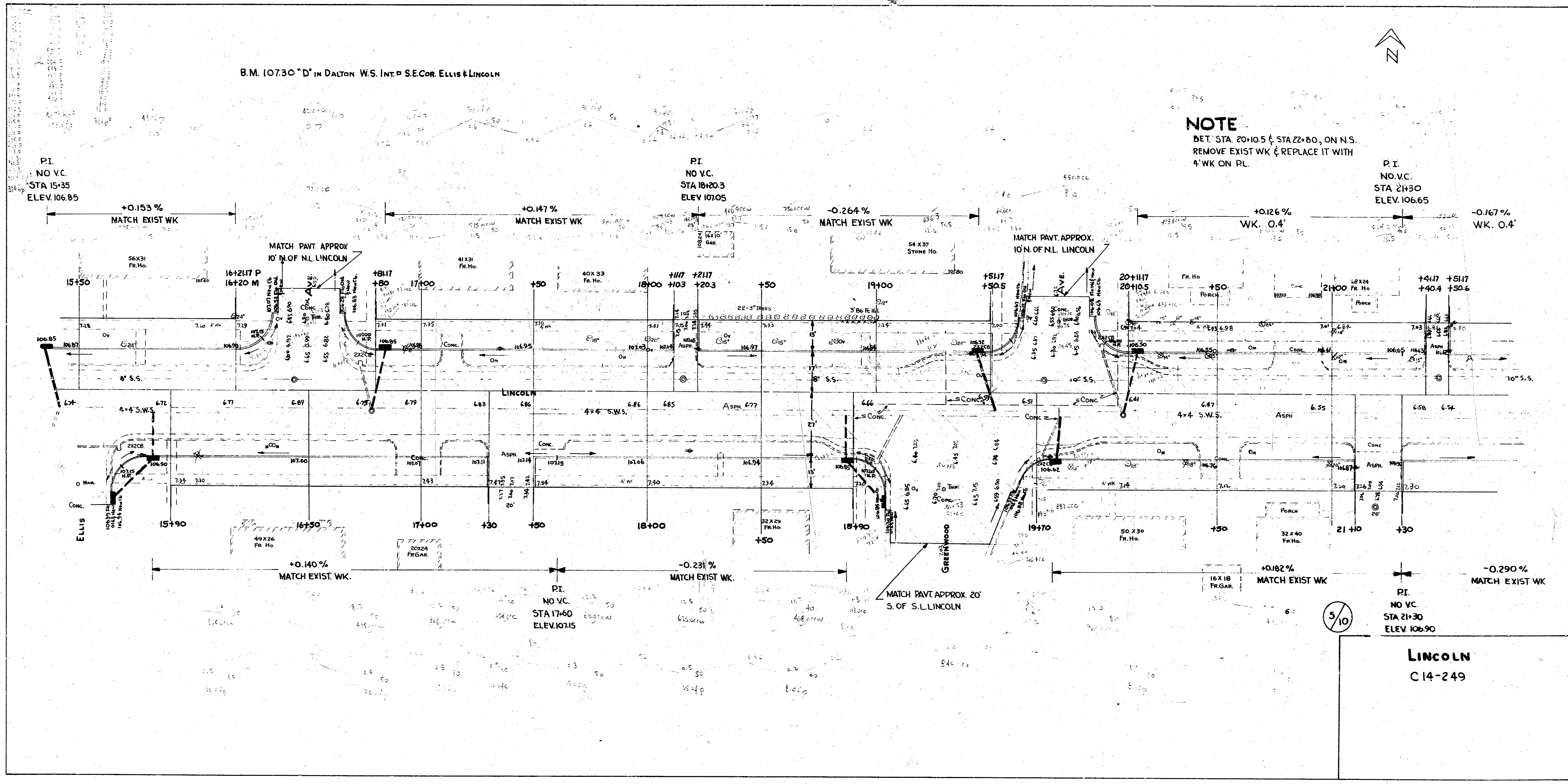
STIMMY CHAMUS BK P
 Plan
 Circled



B.M. 10730 "D" IN DALTON W.S. INT. SE COR. ELLIS & LINCOLN



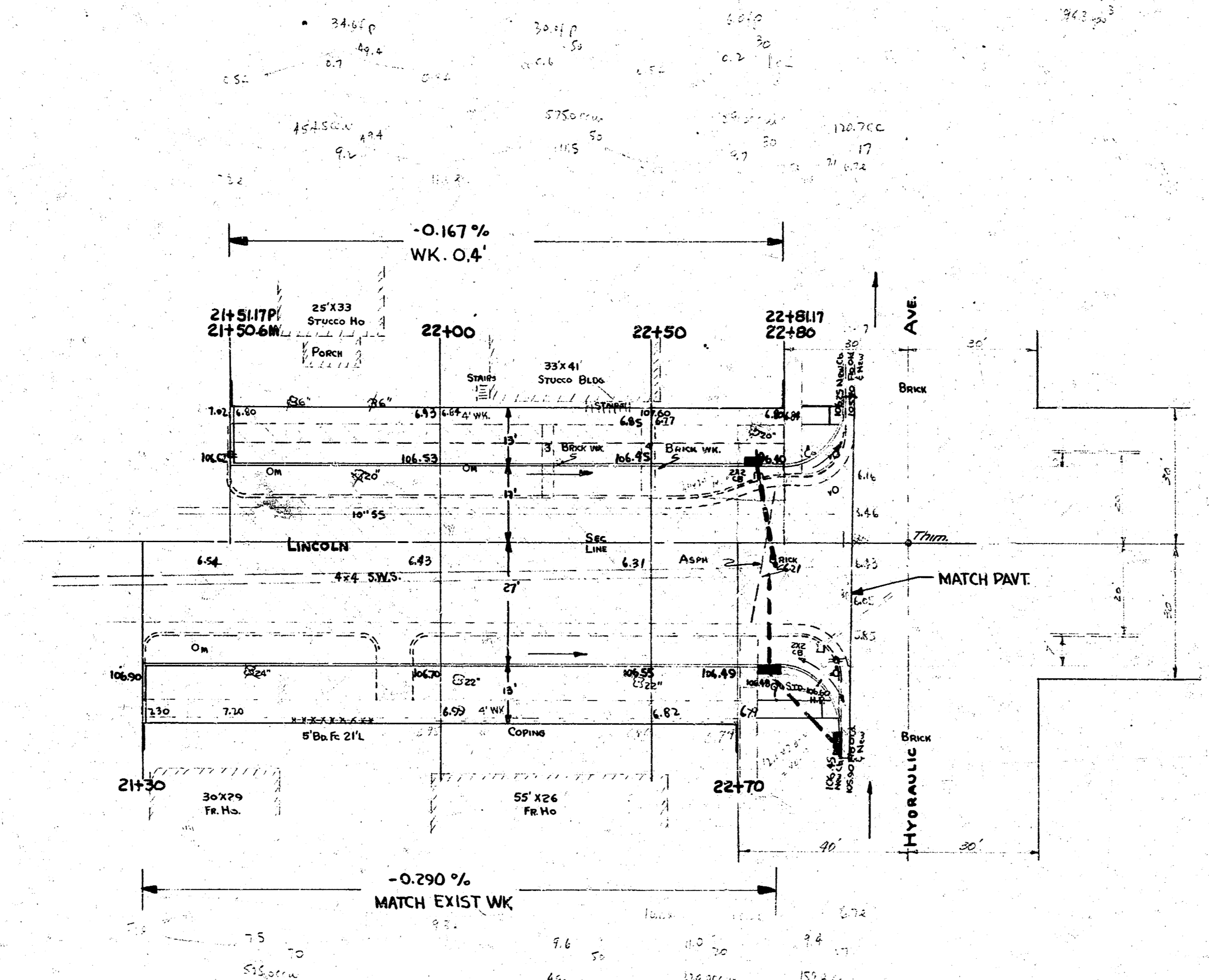
NOTE
DET. STA. 20+10.5 & STA 22+80, ON N.S.
REMOVE EXIST WK & REPLACE IT WITH
4" WK ON PL.



LINCOLN
C14-249

B.M. 106.16 STANDARD SW COR. HYDRAULIC & LINCOLN

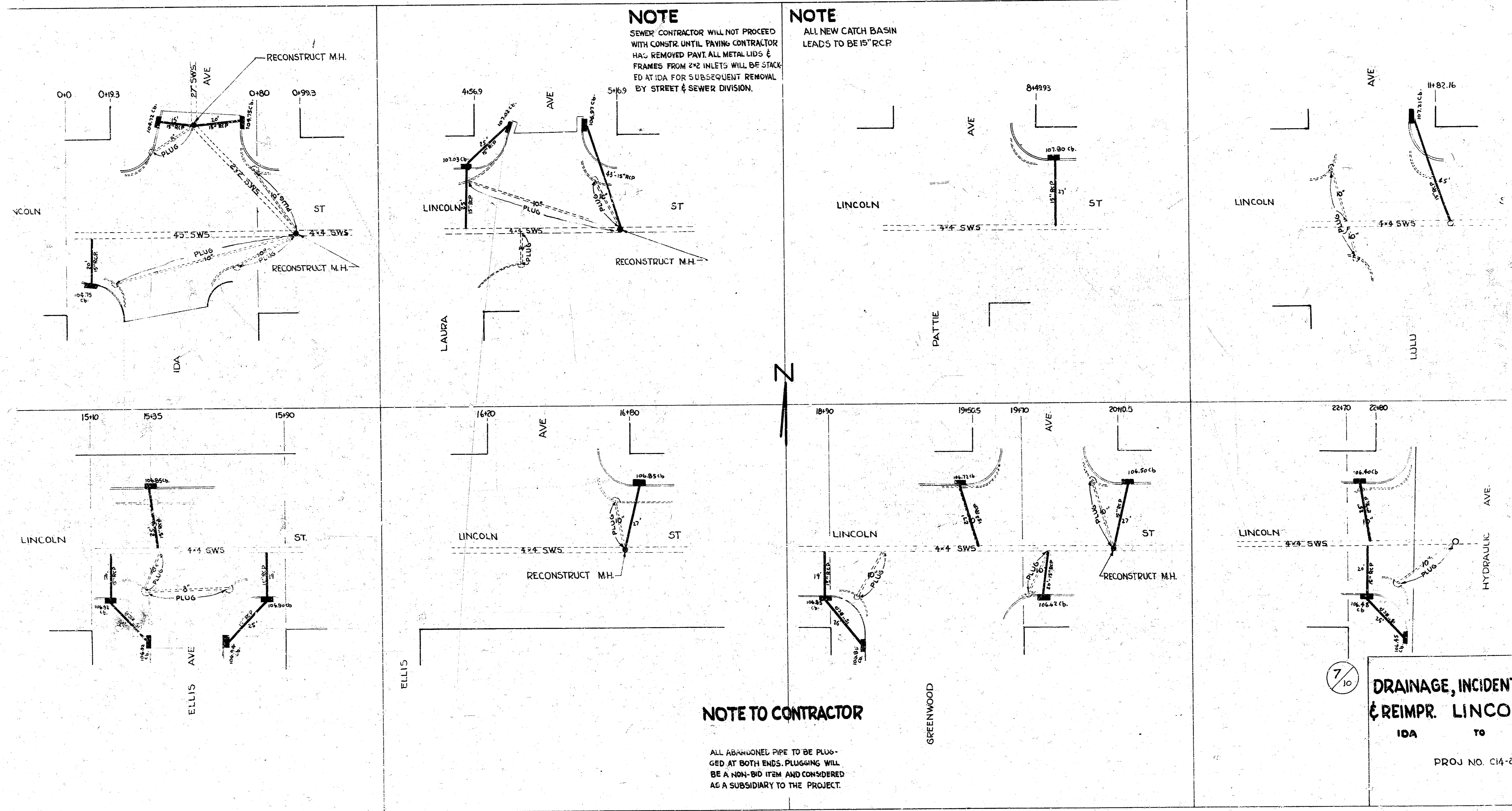
Exc.	1.00	1.00	1.00
Imp.	1.00	1.00	1.00
4505	107	3.0	
5900	898		
3300	1.0		
415.0	1000.8	1.0	
415.0	1000.8	1.0	
112.0	104.0	1.0	
246.3	1000.8	1.0	
343.0	1000.8	1.0	



Pt.
NO V.C.
STA 21+30
ELEV 106.90

6/10

LINCOLN
C14-249



NOTE

SEWER CONTRACTOR WILL NOT PROCEED WITH CONSTR UNTIL PAVING CONTRACTOR HAS REMOVED PAVT. ALL METALLIDS & FRAMES FROM 4\"/>

NOTE

ALL NEW CATCH BASIN LEADS TO BE 15\"/>

NOTE TO CONTRACTOR

ALL ADDITIONAL PIPE TO BE PLUGGED AT BOTH ENDS. PLUGGING WILL BE A NON-BID ITEM AND CONSIDERED AS A SUBSIDIARY TO THE PROJECT.

7/10
DRAINAGE, INCIDENT & REIMPR. LINCOLN
 IDA TO
 PROJ NO. C14-2