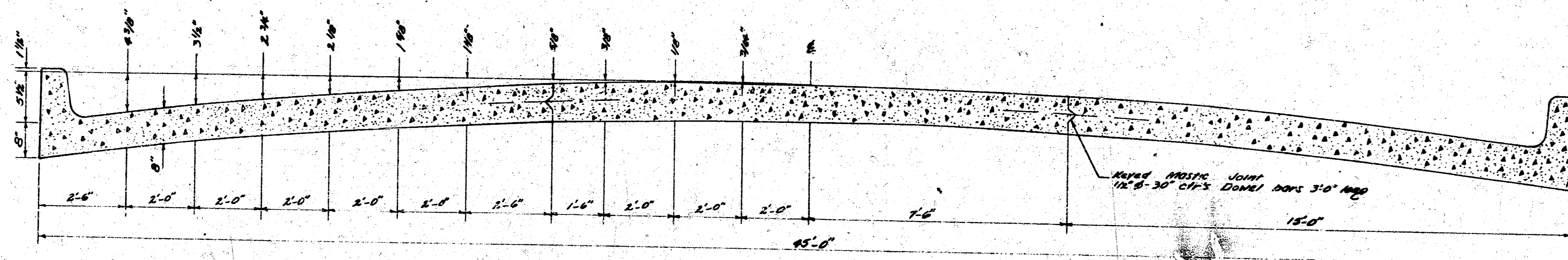
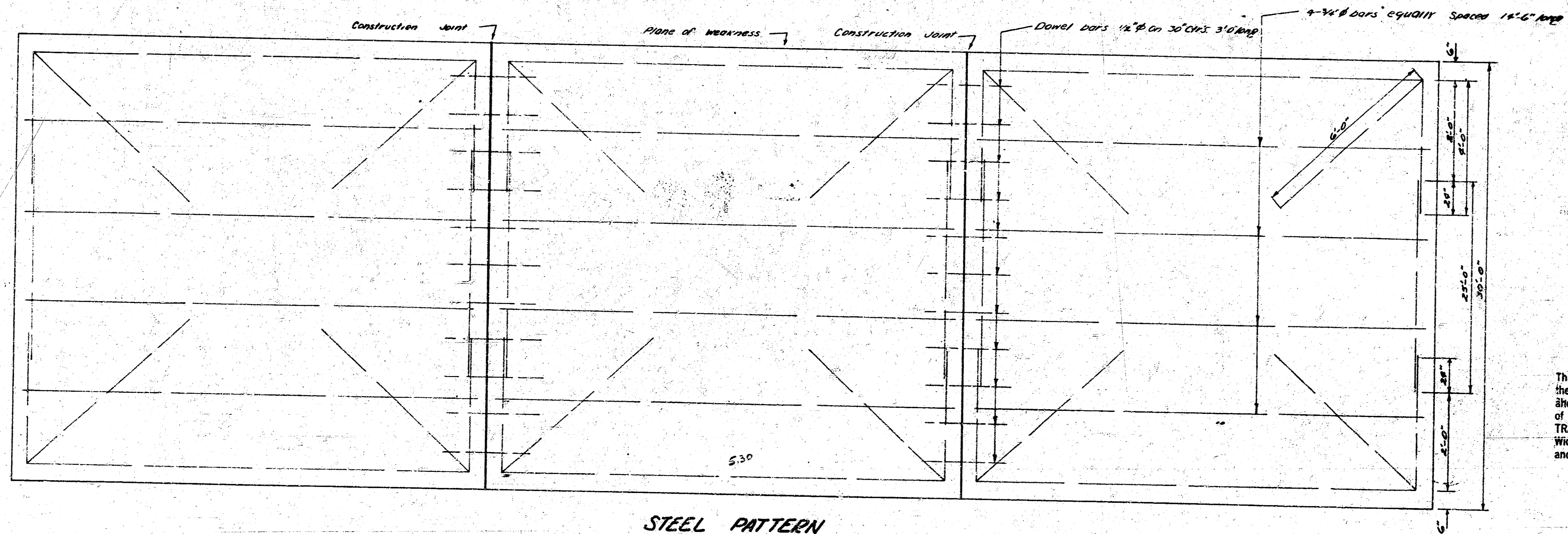


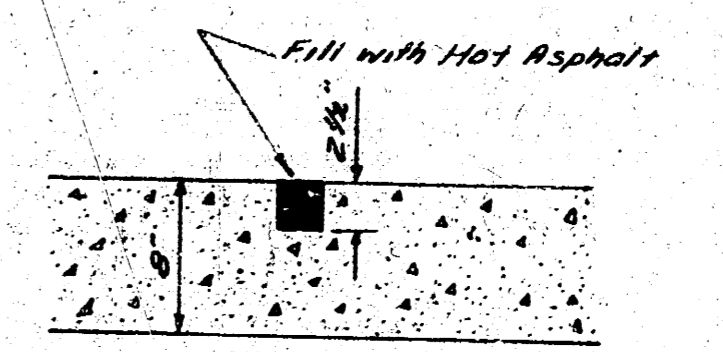
LINCOLN
S.L. MCCORMICK TO N.L. MIDLAND VALLEY R.R.



TYPICAL SECTION



STEEL PATTERN
USE 3/8" BARS EXCEPT WHERE OTHERWISE NOTED



DETAIL of CONSTRUCTION JOINT

NOTE TO CONTRACTOR
This project will be constructed under the supervision of the CITY ENGINEER and conforming to the SPECIFICATIONS of the CITY OF WICHITA. The CONTRACTOR will reimburse the City of Wichita for all cost of Engineering, Plans, and Inspection.



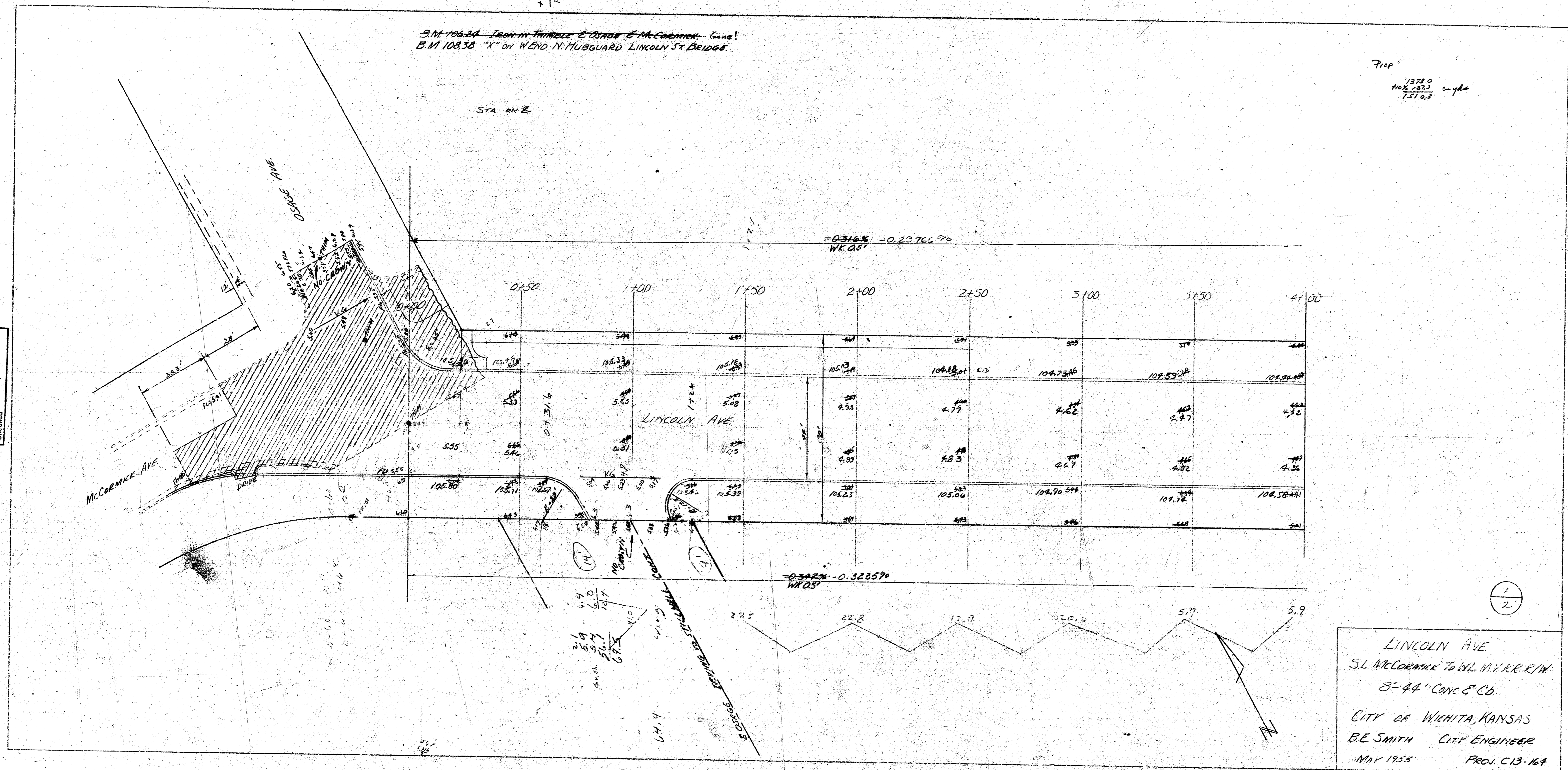
19.6
19.2
19.2

STN 10634 - LEAN-IN TRIMBLE E CURVE S McCORMICK CONC
B.M. 10838 "X" ON W END N. HUBBARD LINCOLN ST BRIDGE

Prop
1272.0
102.1823
1510.3

STA ON E

Survey Data
By B. Brown
Exc. 1/25
Checked



LINCOLN AVE
S.L. McCORMICK TO W. HUBBARD ST
8'-44" CONC & CB
CITY OF WICHITA, KANSAS
B.E. SMITH CITY ENGINEER
MAY 1953 PROJ. C13-164

125

