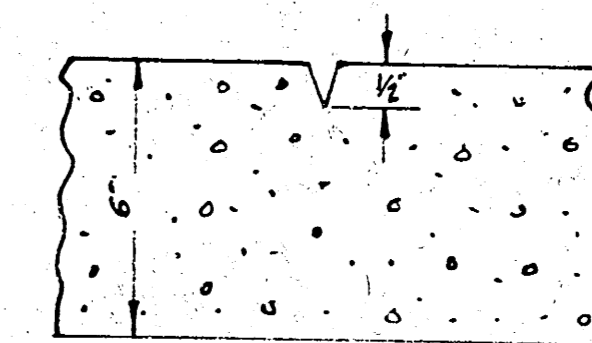
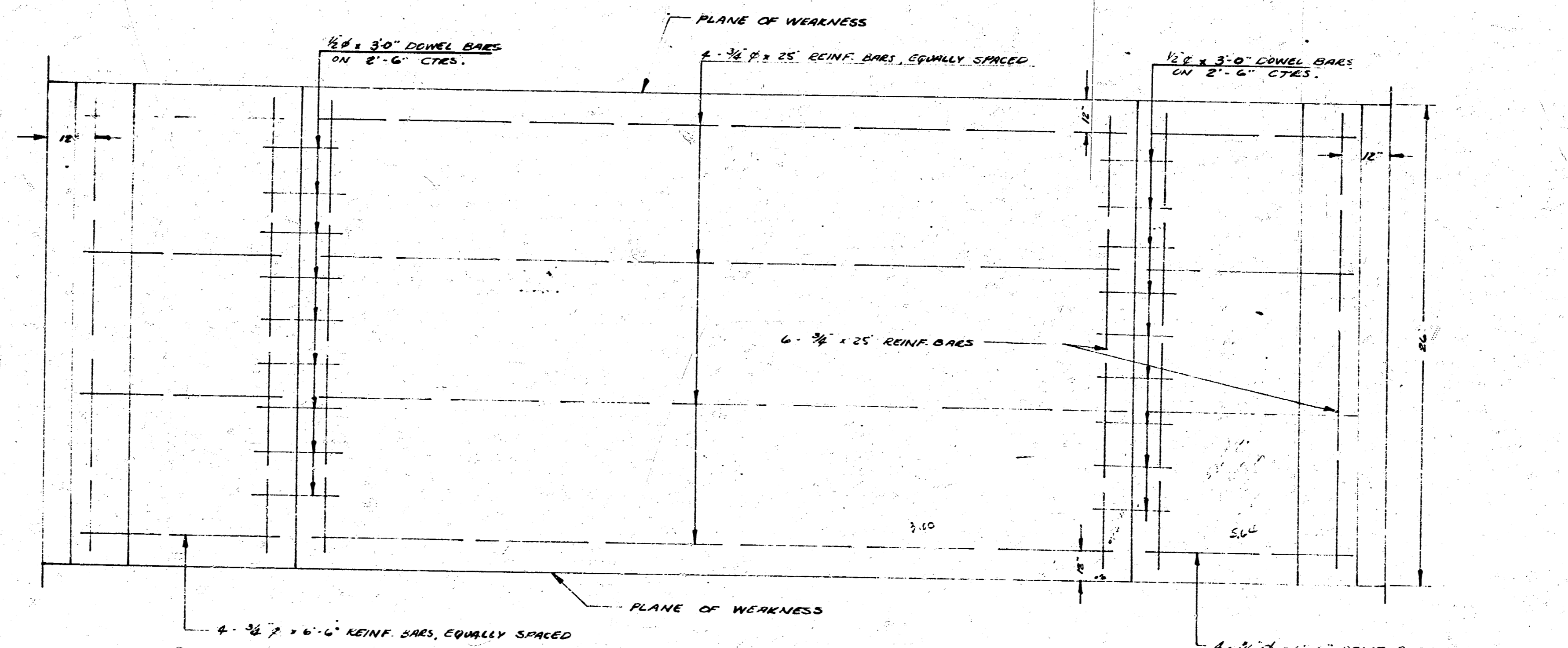
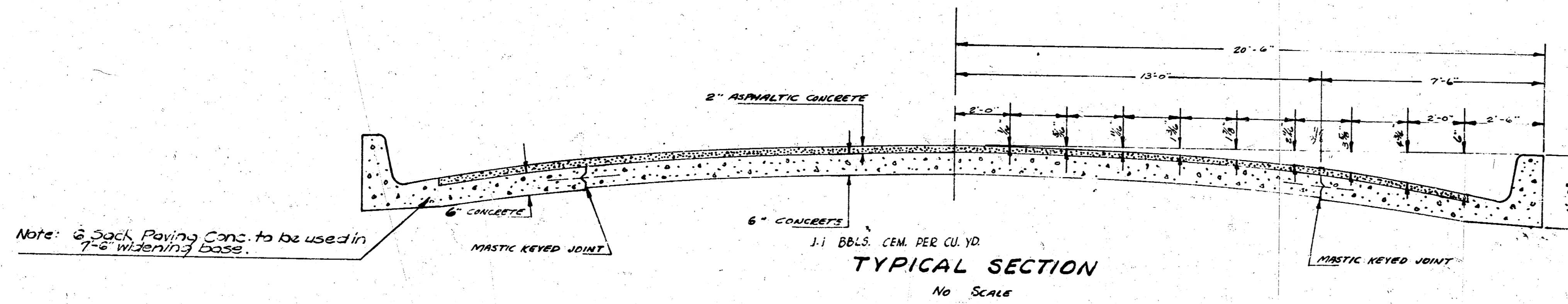
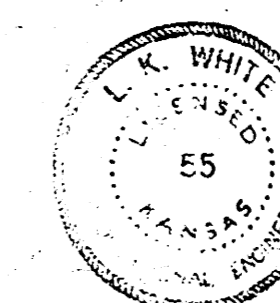


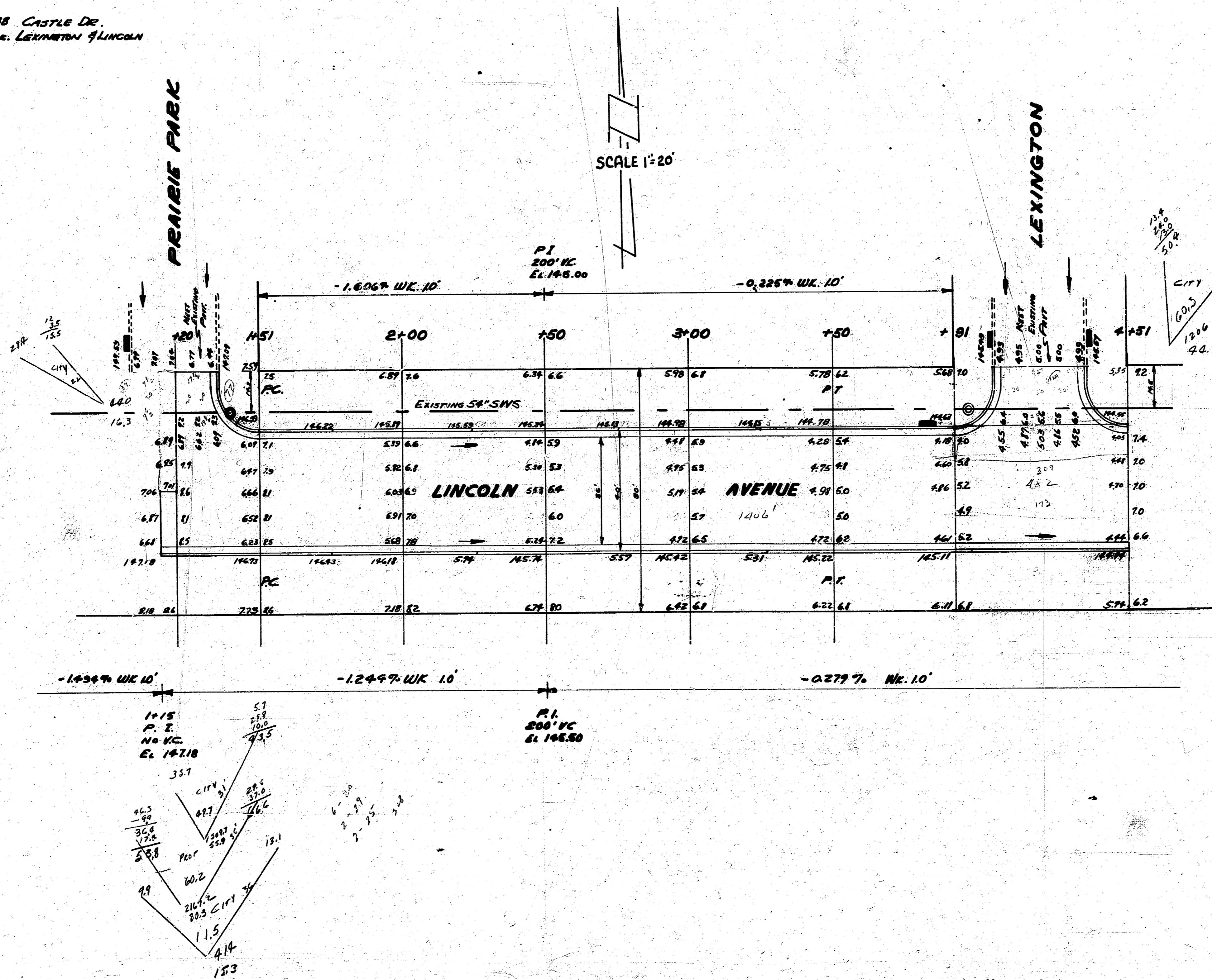
LINCOLN STREET
 E. L. PURCELL'S 5TH TO E. L. W. FABRIQUE



DETAIL - PLANE OF WEAKNESS
 PLANE OF WEAKNESS TO BE CUT WITH DOUBLE-EDGE GROOVE TO DEPTH AS SHOWN IN A STRAIGHT LINE FROM CURB TO CURB, 24" CTR. TO CTR.



B.M. 155.50 SF COR. CONC. PAVEN. NO. 5938 CASTLE DR.
 B.M. 148.17 M IN MUSLER T&M 4th. NE COR. LEXINGTON & LINCOLN



NOTE FOR FINAL ESTIMATE:
 PAVING ETC. HAS DECREASED
 ON BOTH SIDES OF STREET
 DUE TO CHANGE IN PAVEMENT
 & CHANGE IN CURVATURE, ETC.

REVISED - 8/6/52 - LINN

LINCOLN AVE.
 EL. PURCELL'S 5TH ADDN. - EL. WEST FABRIQUE
 26-2-30 WIDEN TO 40' AC.
 CITY OF WICHITA, KANS.
 L.K. WHITE CITY ENGINEER
 JAN. 17, 1952. PROJ. NO. CH-175-176.

