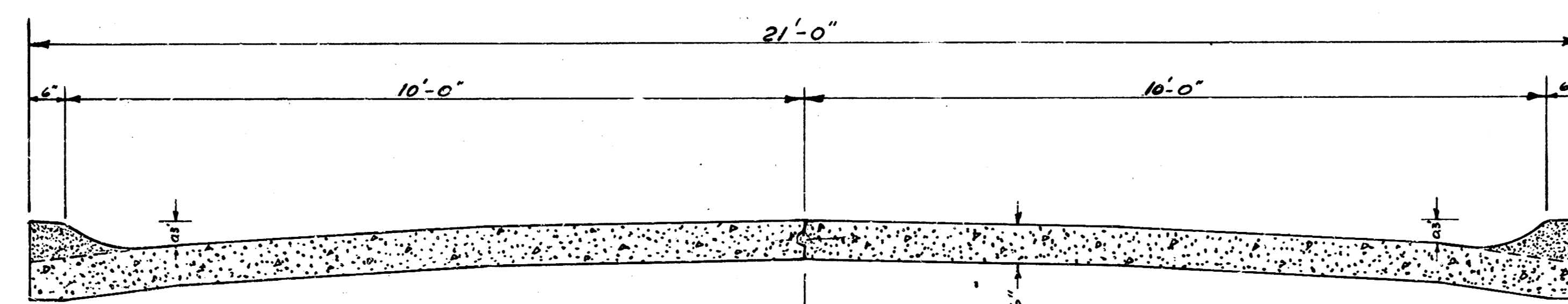
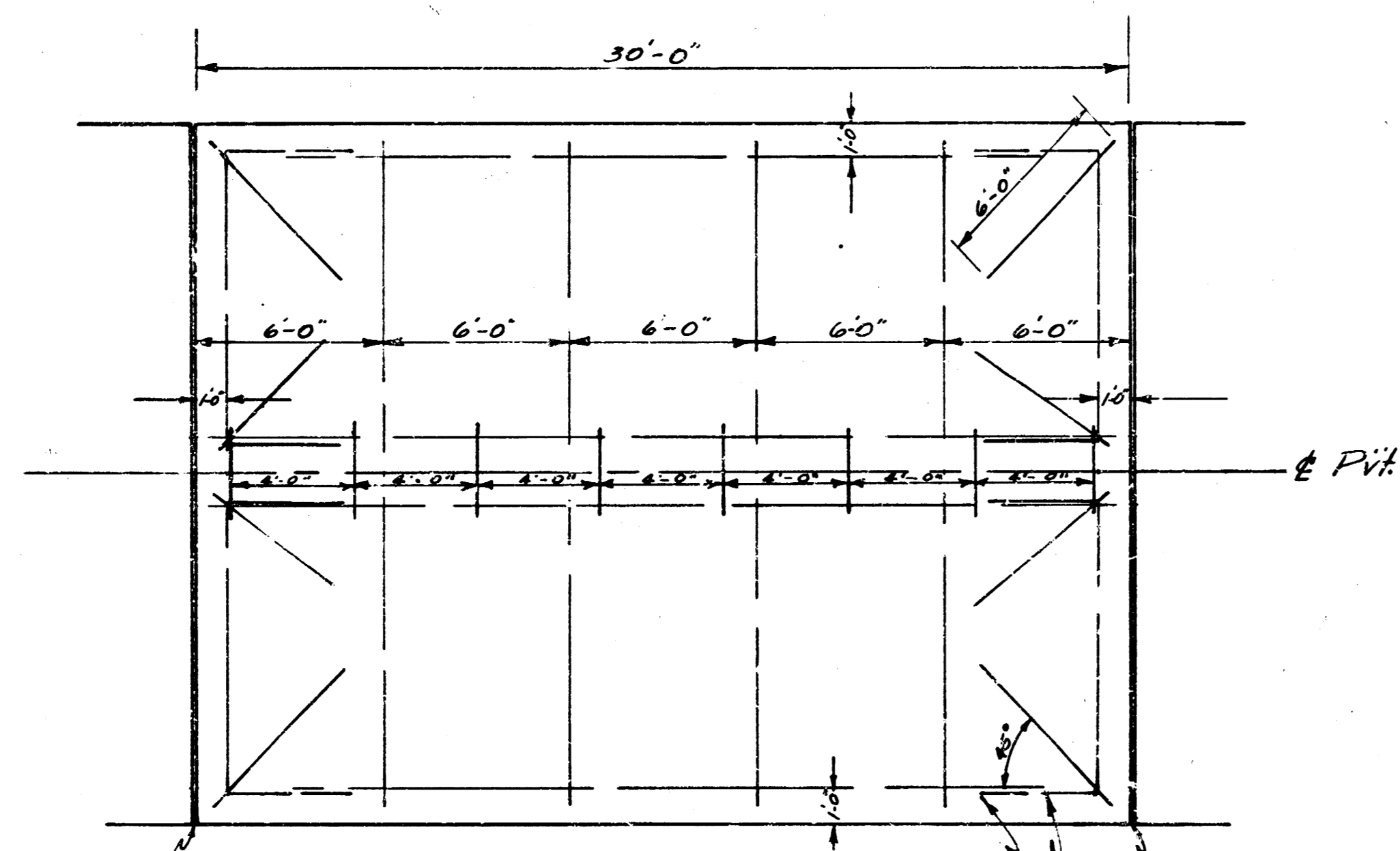


# LOGOPEDICS PAVING PLANS

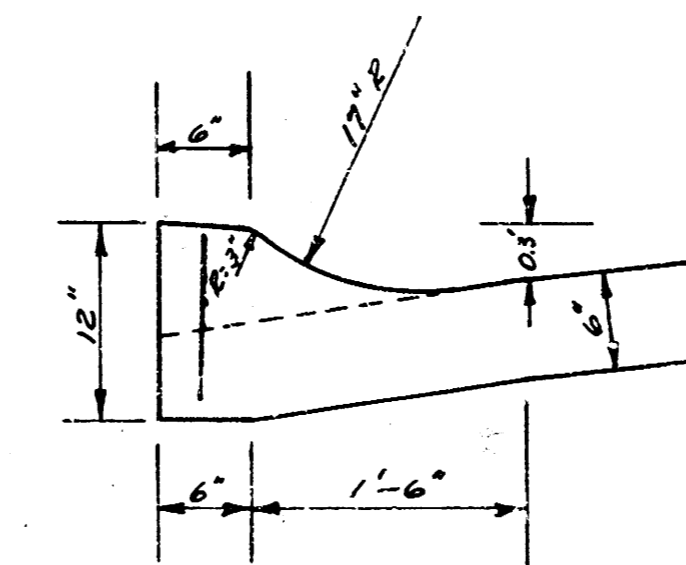


TYPICAL SECTION  
SCALE -  $\frac{1}{4}$ " = 1'-0"



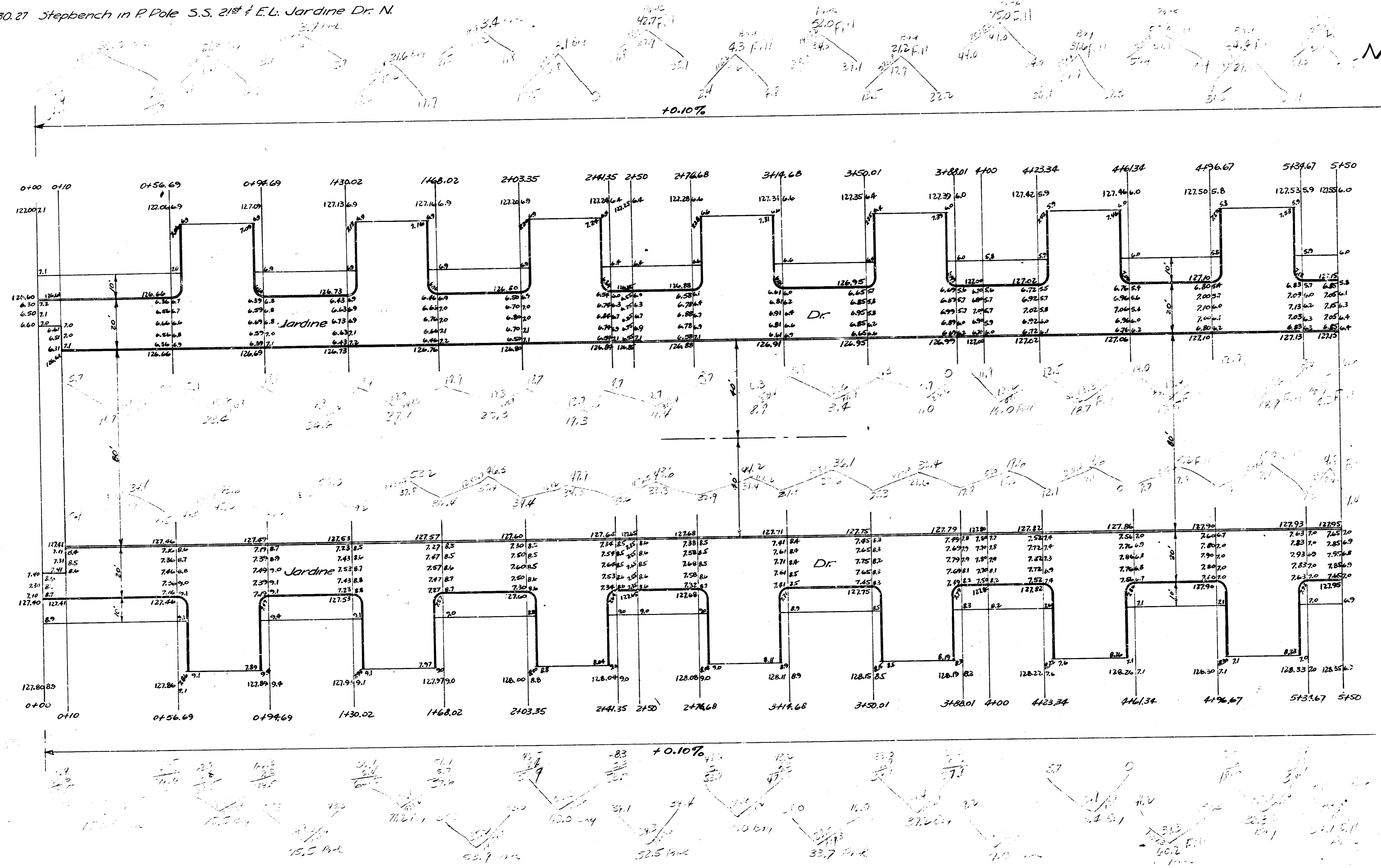
STEEL PATTERN  
SCALE -  $\frac{1}{4}$ " = 1'-0"

Note: All steel  $\frac{3}{4}$ "  $\phi$  bars



CURB DETAIL  
SCALE - 1" = 1'-0"

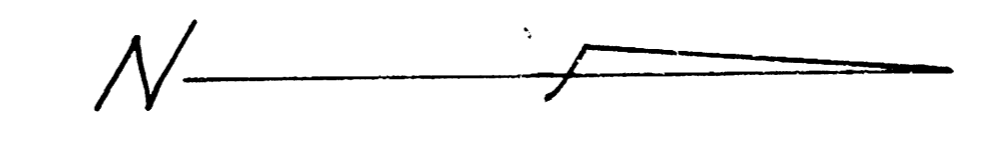
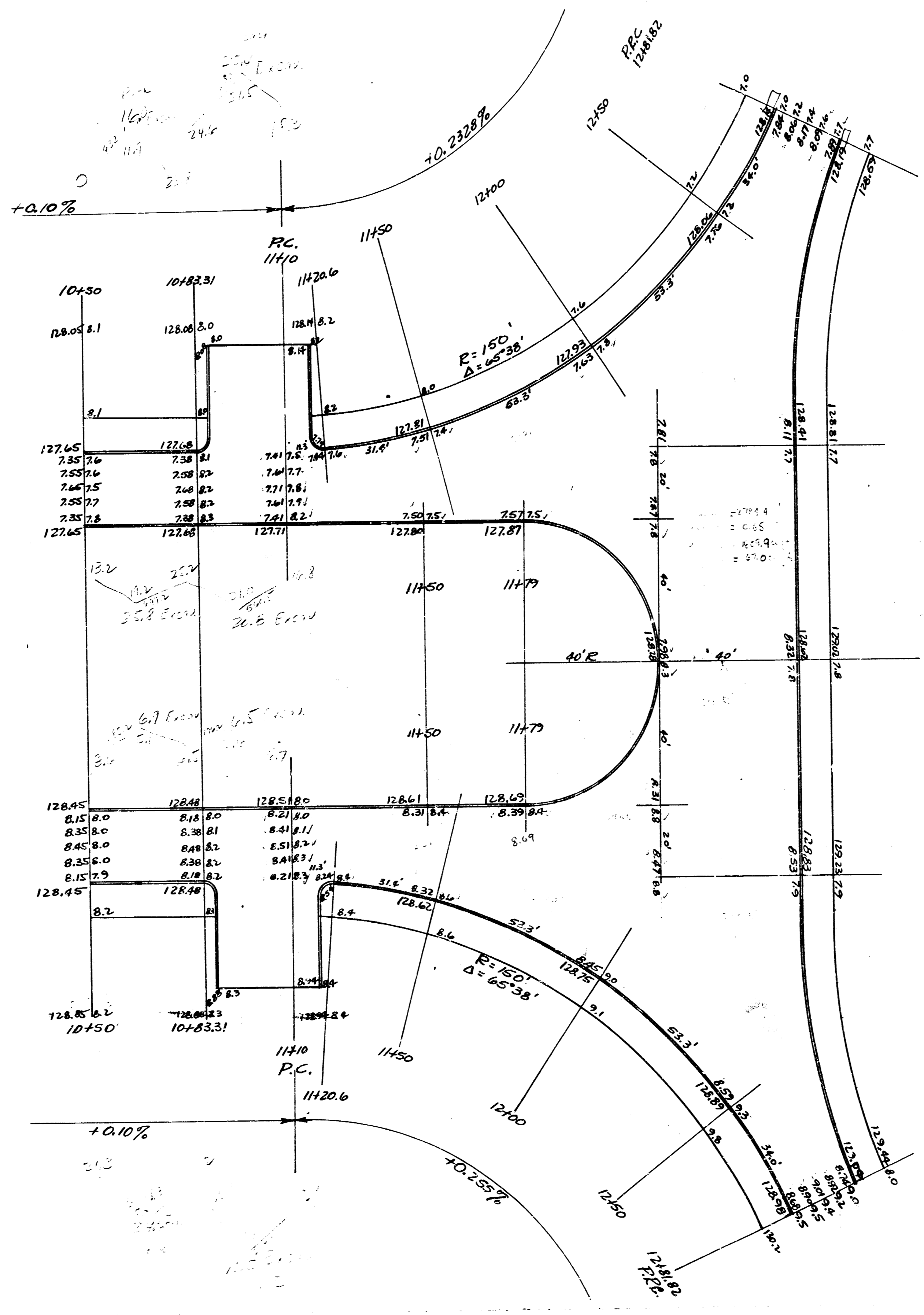
B.M. 130.27 Steppench in P.Pole S.S. 21st & E.L. Jardine Dr. N.



Handwritten notes and calculations on the right side of the plan, including a vertical list of numbers and some small diagrams.

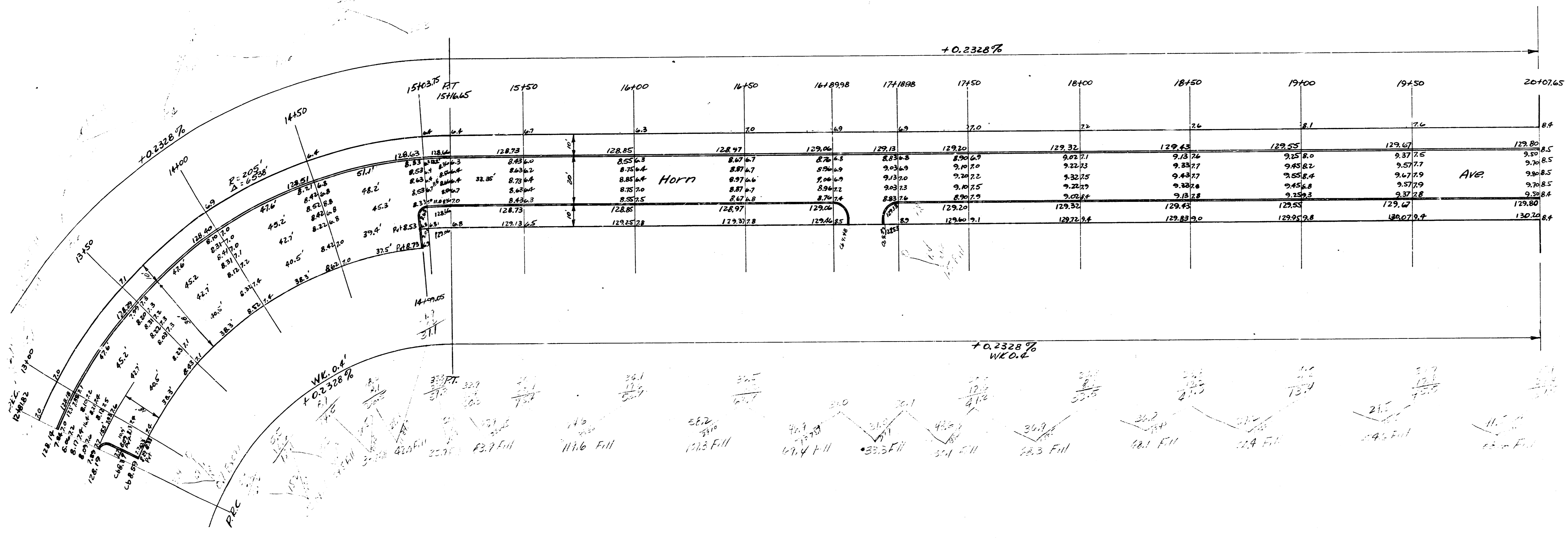
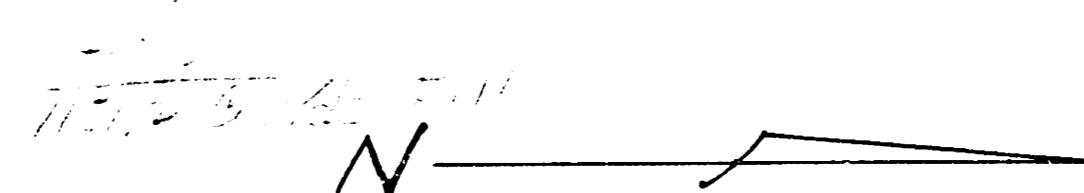
Logpedics Paving Plan  
 N.L. 21st St - N.L. 24th St  
 2' Conc. & Cb.  
 City of Wichita, Kansas  
 L.K. White City Engineer  
 Sept. 30, 1948





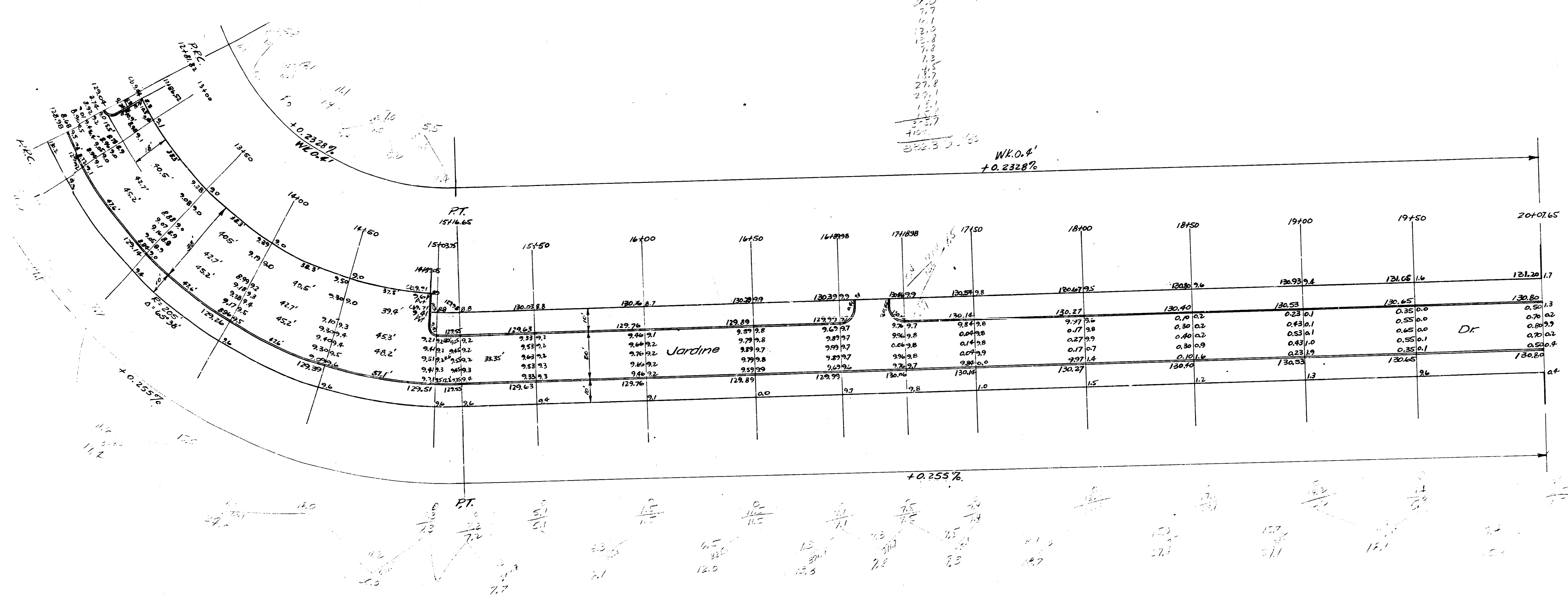
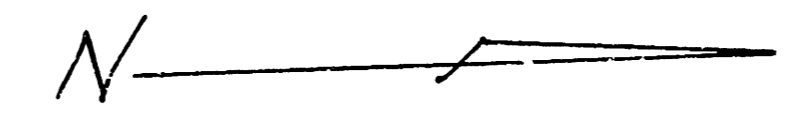
116.1  
 117.1  
 118.1  
 119.1  
 120.1  
 121.1  
 122.1  
 123.1  
 124.1  
 125.1  
 126.1  
 127.1  
 128.1  
 129.1  
 130.1  
 131.1  
 132.1  
 133.1  
 134.1  
 135.1  
 136.1  
 137.1  
 138.1  
 139.1  
 140.1  
 141.1  
 142.1  
 143.1  
 144.1  
 145.1  
 146.1  
 147.1  
 148.1  
 149.1  
 150.1  
 151.1  
 152.1  
 153.1  
 154.1  
 155.1  
 156.1  
 157.1  
 158.1  
 159.1  
 160.1  
 161.1  
 162.1  
 163.1  
 164.1  
 165.1  
 166.1  
 167.1  
 168.1  
 169.1  
 170.1  
 171.1  
 172.1  
 173.1  
 174.1  
 175.1  
 176.1  
 177.1  
 178.1  
 179.1  
 180.1  
 181.1  
 182.1  
 183.1  
 184.1  
 185.1  
 186.1  
 187.1  
 188.1  
 189.1  
 190.1  
 191.1  
 192.1  
 193.1  
 194.1  
 195.1  
 196.1  
 197.1  
 198.1  
 199.1  
 200.1

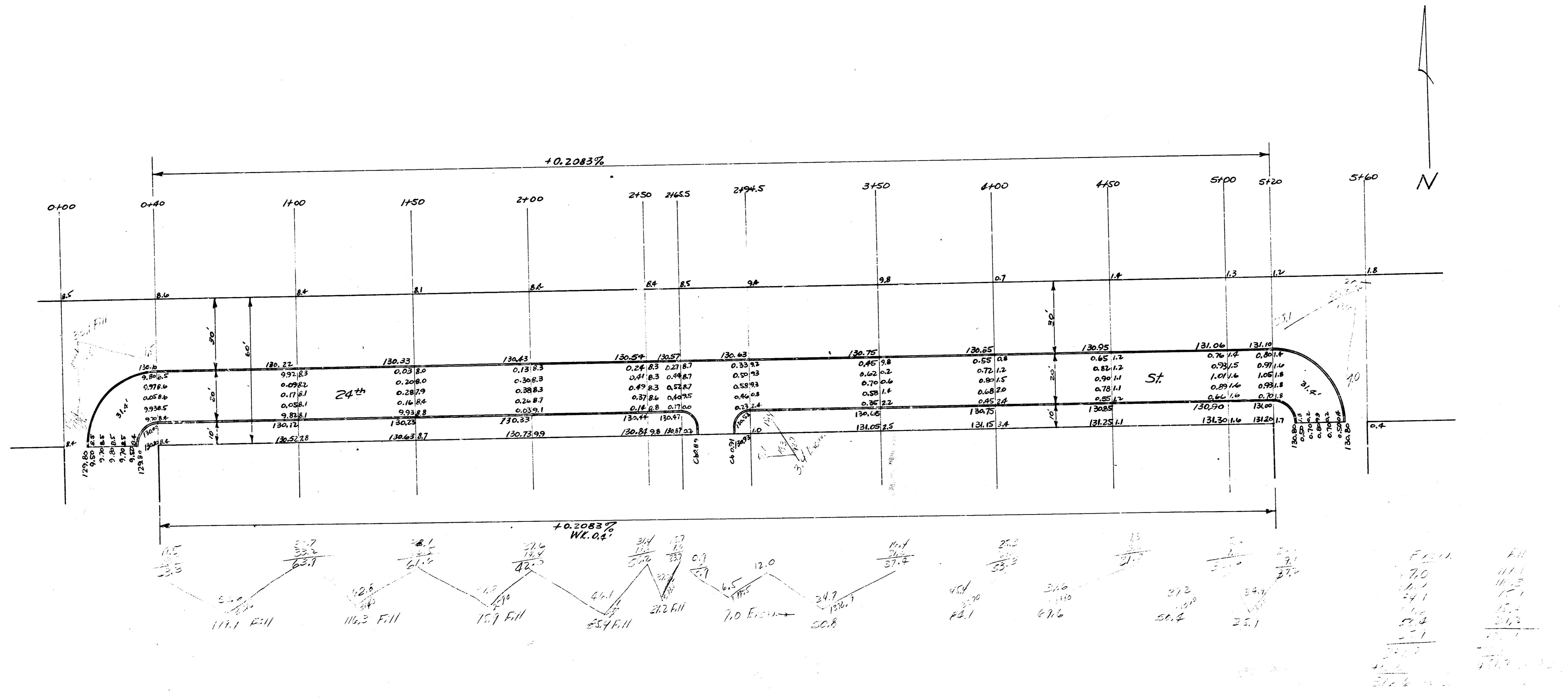
Excavation  
 0  
 1  
 2  
 3  
 4  
 5  
 6  
 7  
 8  
 9  
 10  
 11  
 12  
 13  
 14  
 15  
 16  
 17  
 18  
 19  
 20  
 21  
 22  
 23  
 24  
 25  
 26  
 27  
 28  
 29  
 30  
 31  
 32  
 33  
 34  
 35  
 36  
 37  
 38  
 39  
 40  
 41  
 42  
 43  
 44  
 45  
 46  
 47  
 48  
 49  
 50  
 51  
 52  
 53  
 54  
 55  
 56  
 57  
 58  
 59  
 60  
 61  
 62  
 63  
 64  
 65  
 66  
 67  
 68  
 69  
 70  
 71  
 72  
 73  
 74  
 75  
 76  
 77  
 78  
 79  
 80  
 81  
 82  
 83  
 84  
 85  
 86  
 87  
 88  
 89  
 90  
 91  
 92  
 93  
 94  
 95  
 96  
 97  
 98  
 99  
 100



Excav  
 2.8  
 2.1  
 4.1  
 2.5  
 17.2  
 17.1  
 13.4  
 24.8  
 20.0  
 17.1  
 12.0  
 12.8  
 7.8  
 1.2  
 1.2  
 1.7  
 27.8  
 27.1  
 1.5  
 1.5  
 2.7  
 +10.0  
 222.5

F.I.  
 0





7  
7

