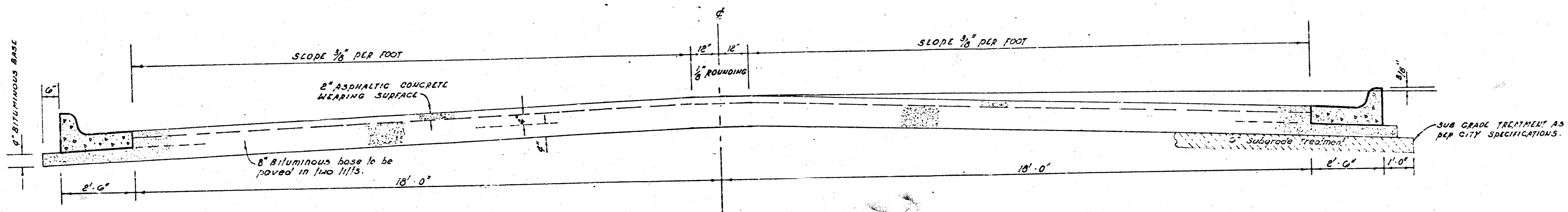


Longfellow Circle

S.L. Funston Street To And Including Cul-De-Sac



The a.c. pavement between the curb & gutter shall be paid as 30 yds 10" a.c. pavement (8" Bituminous Base). The Bituminous Base under the curb & gutter shall be paid as 30 yds 4" Bituminous Base.

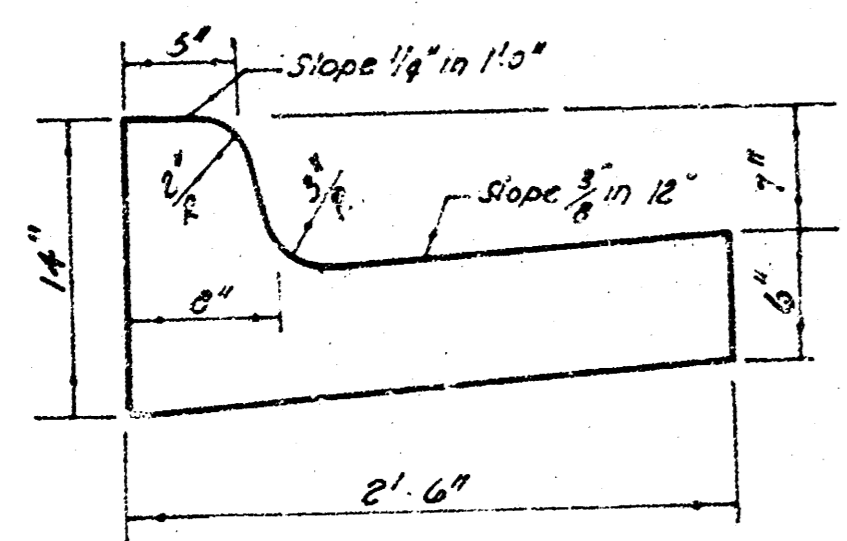
TYPICAL SECTION

4' ASPHALTIC CONCRETE PAVEMENT WITH BITUMINOUS BASE

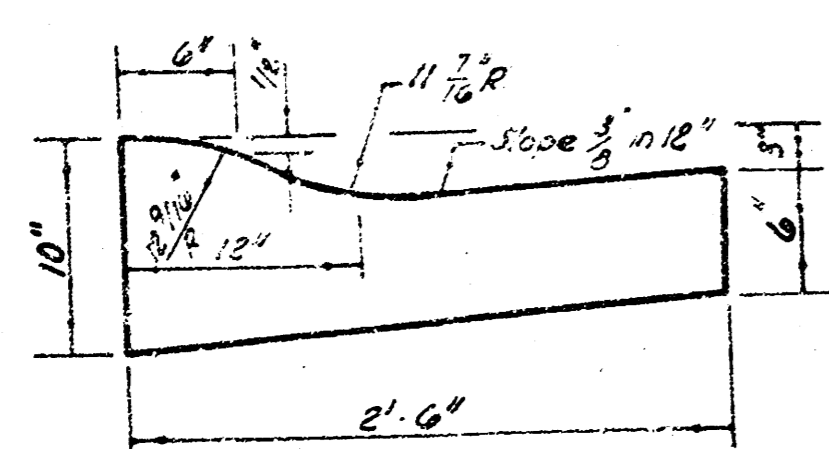
A TACK COAT OF EMULSIFIED ASPHALT (SS-1H) SHALL BE APPLIED AT AN APPROXIMATE RATE 0.05 GALLONS PER SQ YD BETWEEN LIFTS OF ASPHALTIC MATERIALS WHEN ORDERED BY THE ENGINEER. TACK COAT WILL NOT BE PAID FOR DIRECTLY AND SHALL BE CONSIDERED AS SUBSIDIARY TO PRICE BID FOR ASPHALTIC PAVEMENT.

BITUMINOUS BASE AND ASPHALTIC CONCRETE WEARING SURFACE SHALL BE PLACED WITH A LAYDOWN MACHINE HAVING AUTOMATIC CONTROLS FOR CROWN AND GRADE. CONSTRUCTION JOINTS IN EACH LIFT SHALL BE STAGGERED A MINIMUM DISTANCE OF 1' WITH JOINTS IN PRECEDING LIFTS AND SUCH THAT A JOINT WILL BE CONSTRUCTED ON THE PAVEMENT CENTERLINE IN THE TOP LIFT.

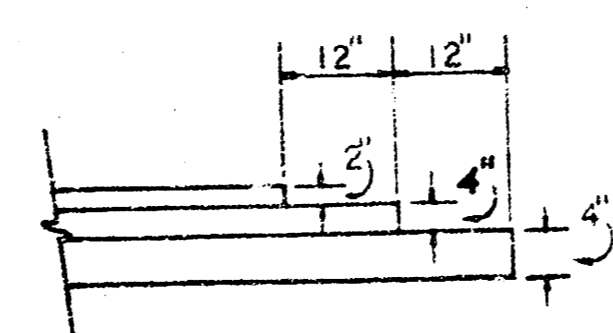
COMBINED CURB & GUTTER



ROLL TYPE CURB & GUTTER



DETAIL OF TRANSVERSE CONSTRUCTION JOINTS



TRANSVERSE CONSTRUCTION JOINTS SHALL BE CONSTRUCTED IN FLEXIBLE BASE PAVEMENTS AT LOCATIONS WHERE PAVEMENT TEMPORARILY ENDS TO FACILITATE FUTURE PAVEMENT CONSTRUCTION AS SHOWN BY DETAIL. THE COST OF CONSTRUCTING THE TRANSVERSE CONSTRUCTION JOINTS SHALL NOT BE MEASURED OR PAID FOR DIRECTLY BUT SHALL BE INCLUDED IN THE BID PRICE FOR SQUARE YARDS OF ASPHALTIC CONCRETE PAVEMENT.



CITY OF WICHITA, KANSAS

DEPARTMENT of ENGINEERING

R. W. BRUGSEMAN CITY ENGINEER

DATE _____
 Proj. No. 472 76 245 80828 000 000 C12
 Sheet 1 of 4

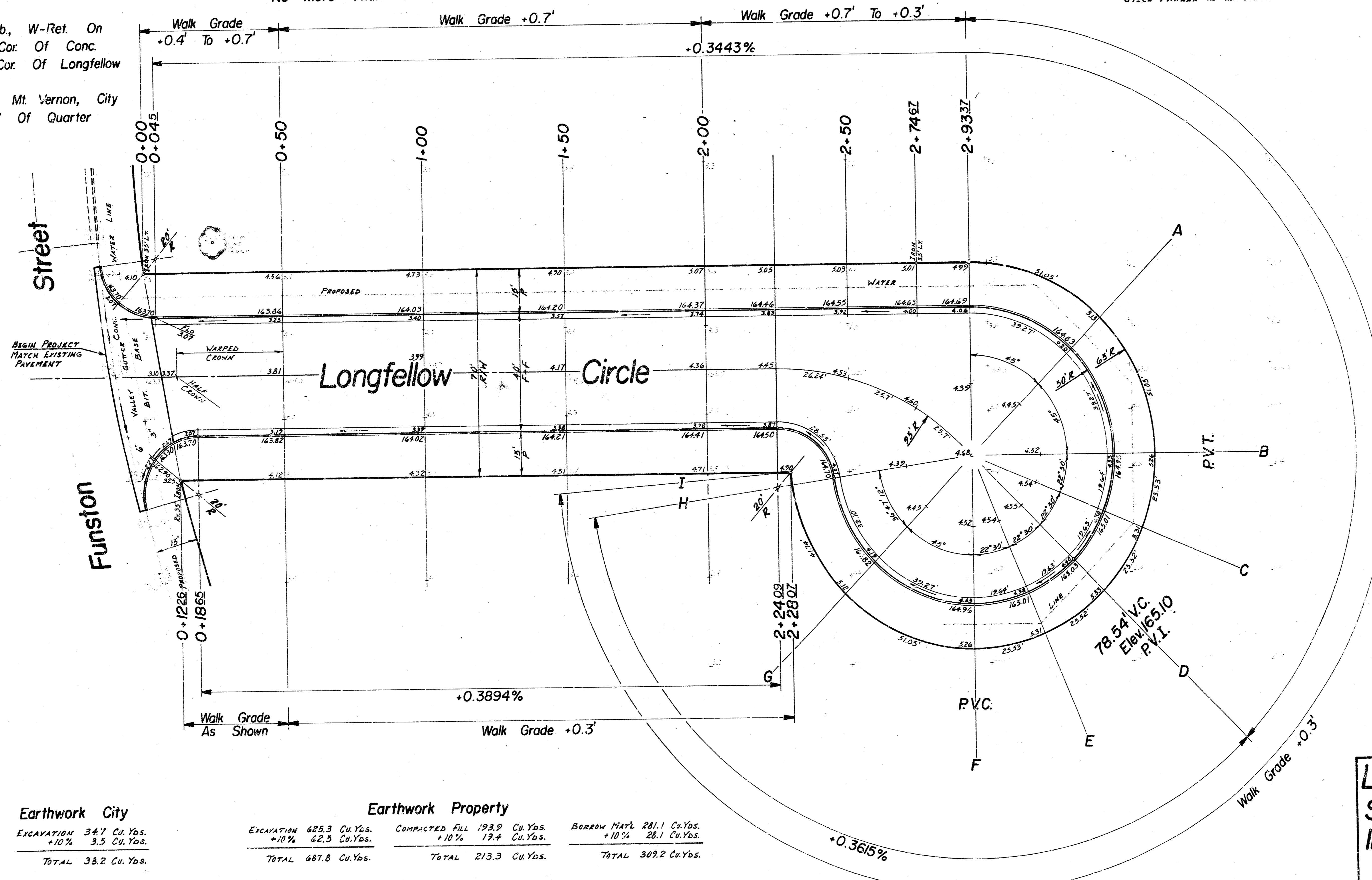
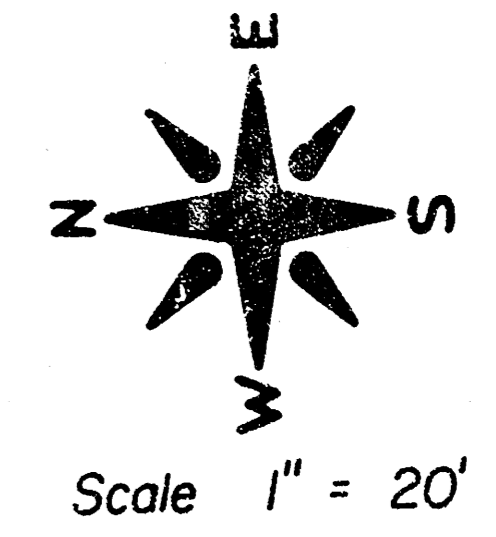
FILMED FROM THE BEST AVAILABLE COPY

Baseline Is Center Of Longfellow Circle

No More Than 1 - 20' Drive To Be Constructed On This Project. (Industrial Standards)

NOTE: USE "CONCRETE SIDEWALK, CURB & GUTTER" SPEC. BOOK FOR STEEL PAVEMENT IN INDUSTRIAL DRIVEWAYS.

B.M. 162.59 "a" Top Of Cb, W-Ret. On Longfellow Northwest Cor. Of Conc. Approach Northwest Cor. Of Longfellow & Funston.
 B.M. 163.703 Rock Rd. & Mt. Vernon, City Std, 32' S & 62' W Of Quarter Section Corner



DRAWN BY: R. B. J.
 CHECKED BY: R. B. J.
 DATE: 1/12

Earthwork City

EXCAVATION	34.7 Cu.Yds.
+10%	3.5 Cu.Yds.
TOTAL	38.2 Cu.Yds.

Earthwork Property

EXCAVATION	625.3 Cu.Yds.	COMPACTED FILL	193.9 Cu.Yds.	BORROW MAT'L	281.1 Cu.Yds.
+10%	62.3 Cu.Yds.	+10%	19.4 Cu.Yds.	+10%	28.1 Cu.Yds.
TOTAL	687.6 Cu.Yds.	TOTAL	213.3 Cu.Yds.	TOTAL	309.2 Cu.Yds.

MANIPULATION 2,244.0 Sq.Yds.

SUB-GRADE
 TYPE OF SUB-GRADE TREATMENT SHALL BE DETERMINED BY THE FIELD ENGINEER. SUB-GRADE SHALL BE TREATED WITH LIME TREATMENT, SEWAGE TREATMENT, OR SUB-GRADE MODIFICATION OF ANY COMBINATION OF THESE.

Indicates Concrete Removal

Longfellow Circle
S.L. Funston Street To And Including Cul-De-Sac
 40' F-F With Comb. Cb. And Gtr.
 City Of Wichita, Kansas
 Dean Sellers City Engineer
 Proj. No. 472 76 245 80828 000 000 001
 Date: 2/12
 Sheet 2 of 4

FILMED FROM THE BEST AVAILABLE COPY.....