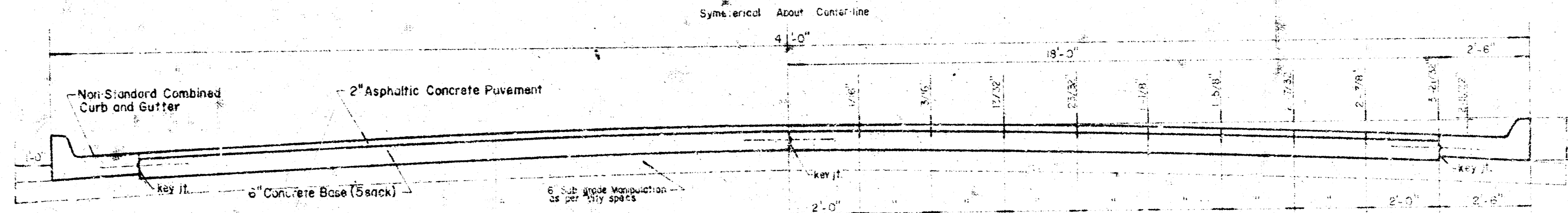
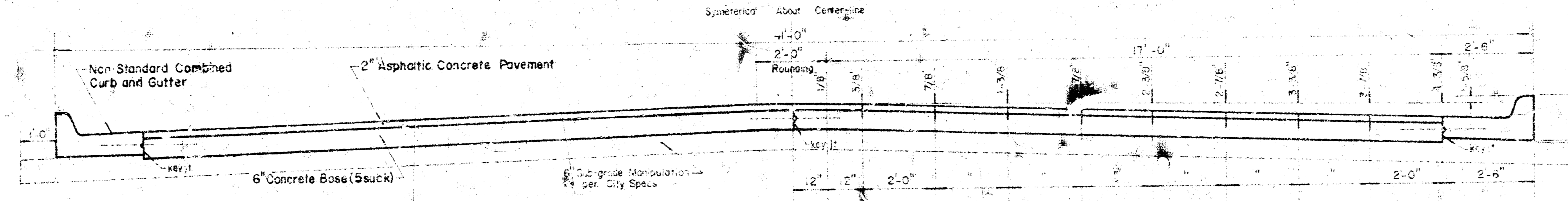


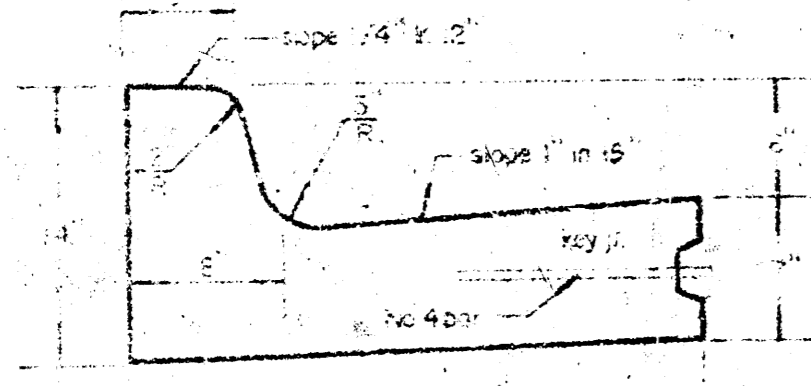
LONGFELLOW
NL Funston - NL Osie
 CITY OF WICHITA, KANSAS
 R. W. LINN - City Engineer
 Project No. DAKS 566056



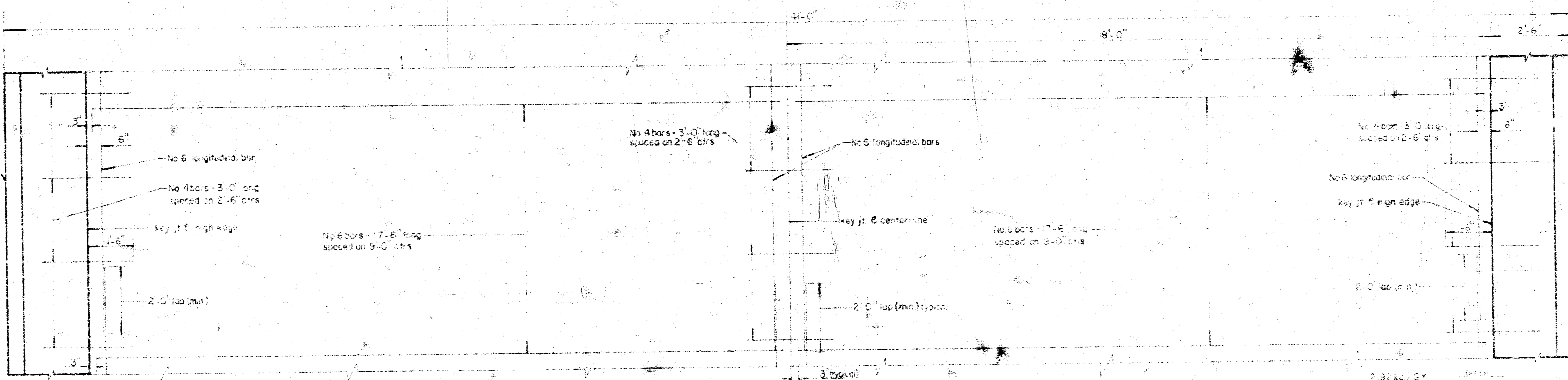
TYPICAL SECTION WITH STANDARD CROWN
 40'-0" ASPHALTIC CONCRETE PAVEMENT



TYPICAL SECTION WITH ALTERNATE CROWN
 40'-0" ASPHALTIC CONCRETE PAVEMENT



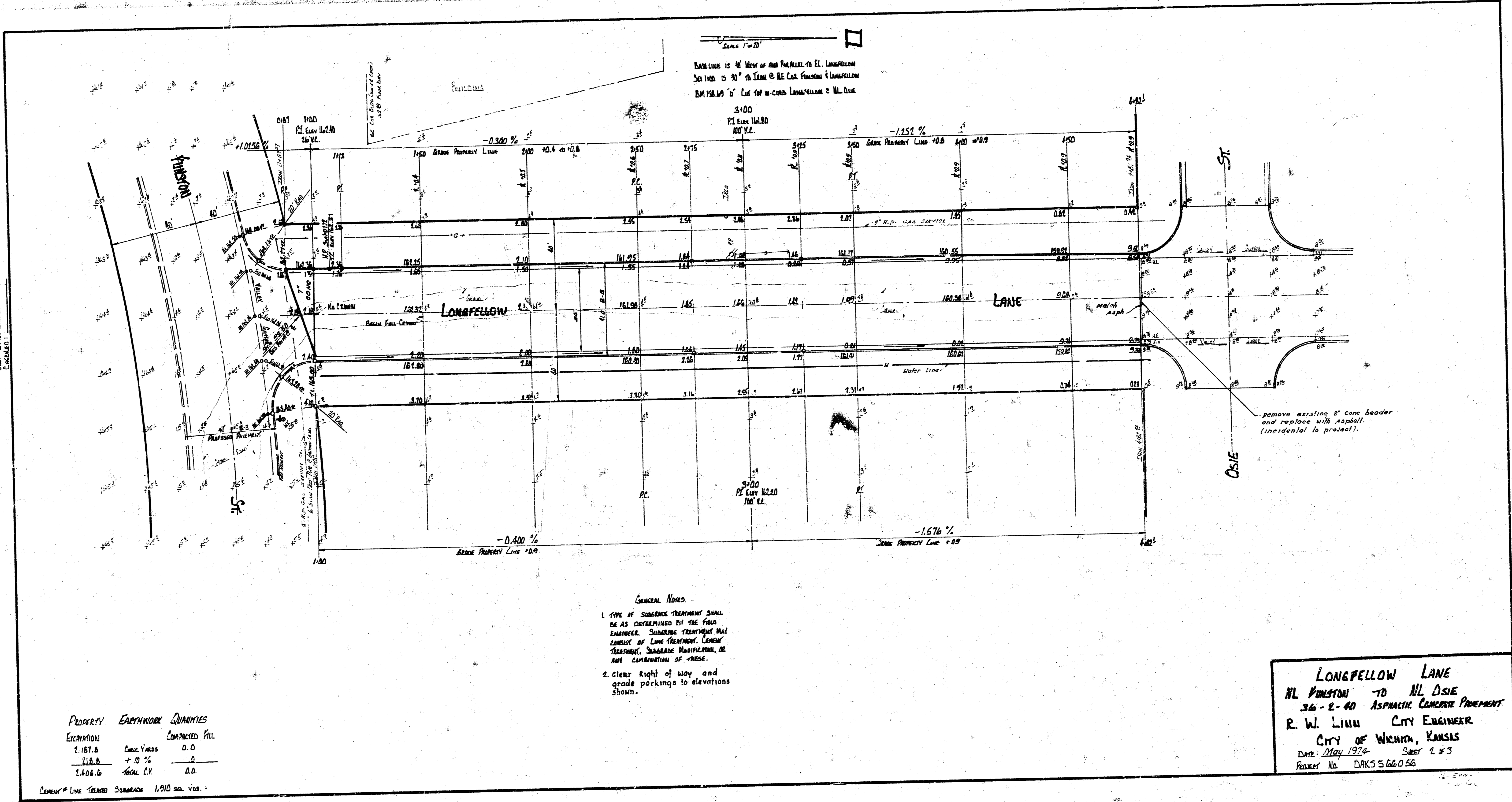
GENERAL NOTES:
 Construction joints may be constructed in combined curb and gutter by sawing with an approved concrete saw. The cut shall extend 2-1/2" below the surface of the gutter and curb. Sawed construction joints shall have a maximum spacing of 10 ft and be filled with a specified joint filler, such that the joint in the gutter section will be completely filled.
 Pavement Grades shown on plans are for standard crown.



TYPICAL STEEL PATTERN
 FOR ASPHALTIC CONCRETE PAVEMENT



Survey: Plan, Sec. 21, T. 14 N., R. 10 W., S. 36 E.,
 Plan: J. D. Linn
 Sec: J. D. Linn
 Engineer:



GENERAL NOTES

1. TYPE OF SURFACE TREATMENT SHALL BE AS DETERMINED BY THE FIELD ENGINEER. SURFACE TREATMENT MAY CONSIST OF LINE TREATMENT, CEMENT TREATMENT, SURFACE MODIFICATION, OR ANY COMBINATION OF THESE.
2. CLIENT RIGHT OF WAY AND GRADE PARKINGS TO ELEVATIONS SHOWN.

| PROPERTY ELEVATION | EMBANKMENT QUANTITIES | QUANTITIES |
|--------------------|-----------------------|------------|
| 1.187.8 | Case Voids | 0.0 |
| 1.187.8 | +10 % | 0.0 |
| 1.108.6 | SOIL LN | 0.0 |

Cement Line Treated Sidewalks 1,910 sq. Yds.

LONGFELLOW LANE
 NL WILSON TO NL DSIE
 36-2-40 ASPHALT CONCRETE PAVEMENT
 R. W. LINN CITY ENGINEER
 CITY OF WICHITA, KANSAS
 Date: May 1974 Sheet 2 of 3
 Project No. DAKS 566056