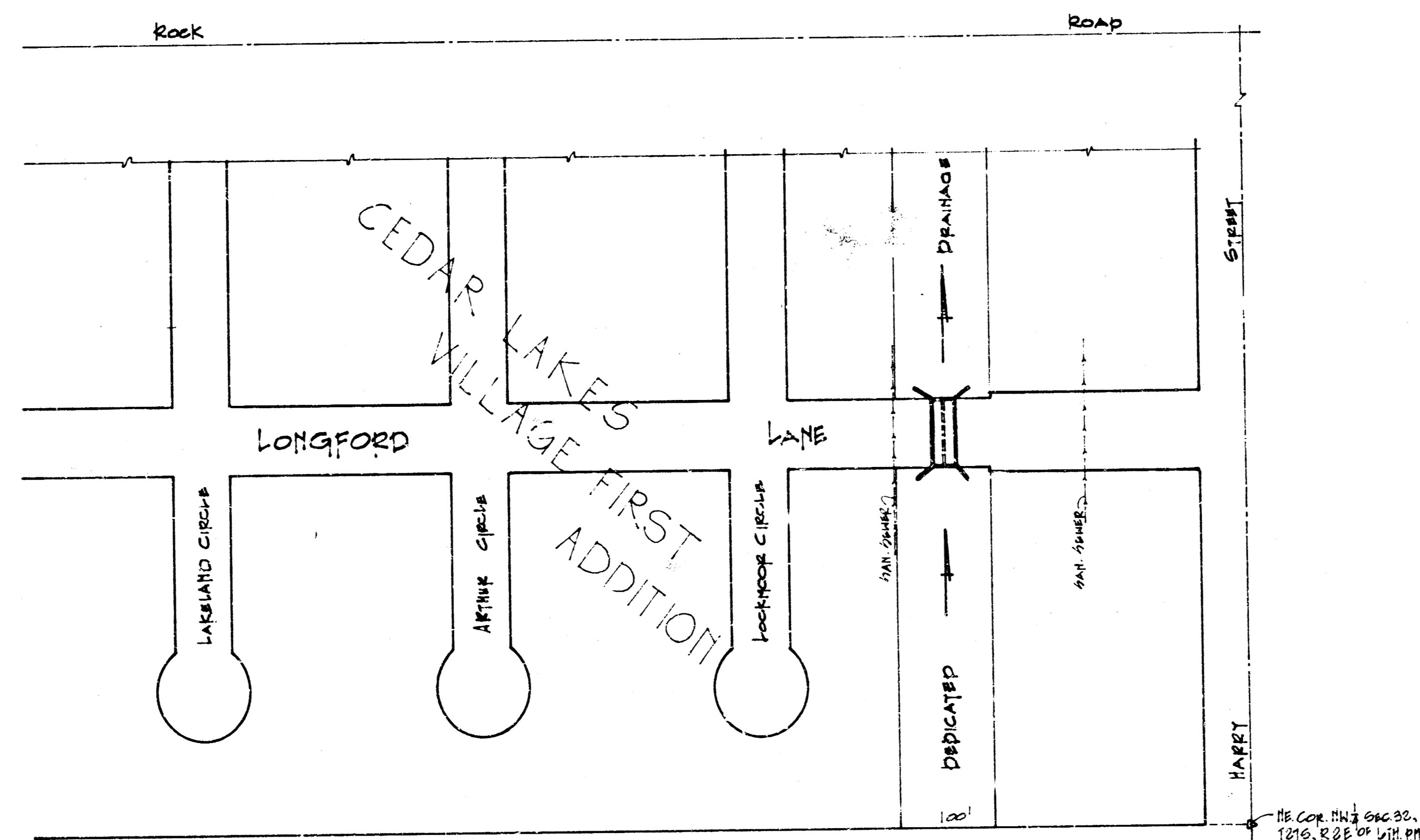


2-10'x5' REINFORCED CONC. BOX CULVERT  
 IN CONNECTION WITH PAVING LONGFORD LANE-LOT 28-BLK.  
 5- CEDAR LAKES VILLAGE FIRST ADDN. TO SL.  
 HARRY ST.

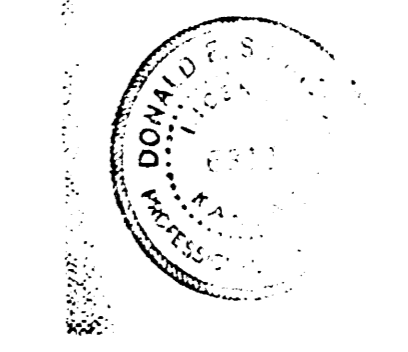
R. W. LINN  
 Project No.

City Engineer  
 DAKC 573051



FR. COR. 1112 046 30.  
 1210, R. 22 04 1/2 P.

Sept. 1973



NO. 1112 046 30  
 1210, R. 22 04 1/2 P.

BEAVIS A. FLEPP  
 CIVIL ENGINEER  
 CHECKED

