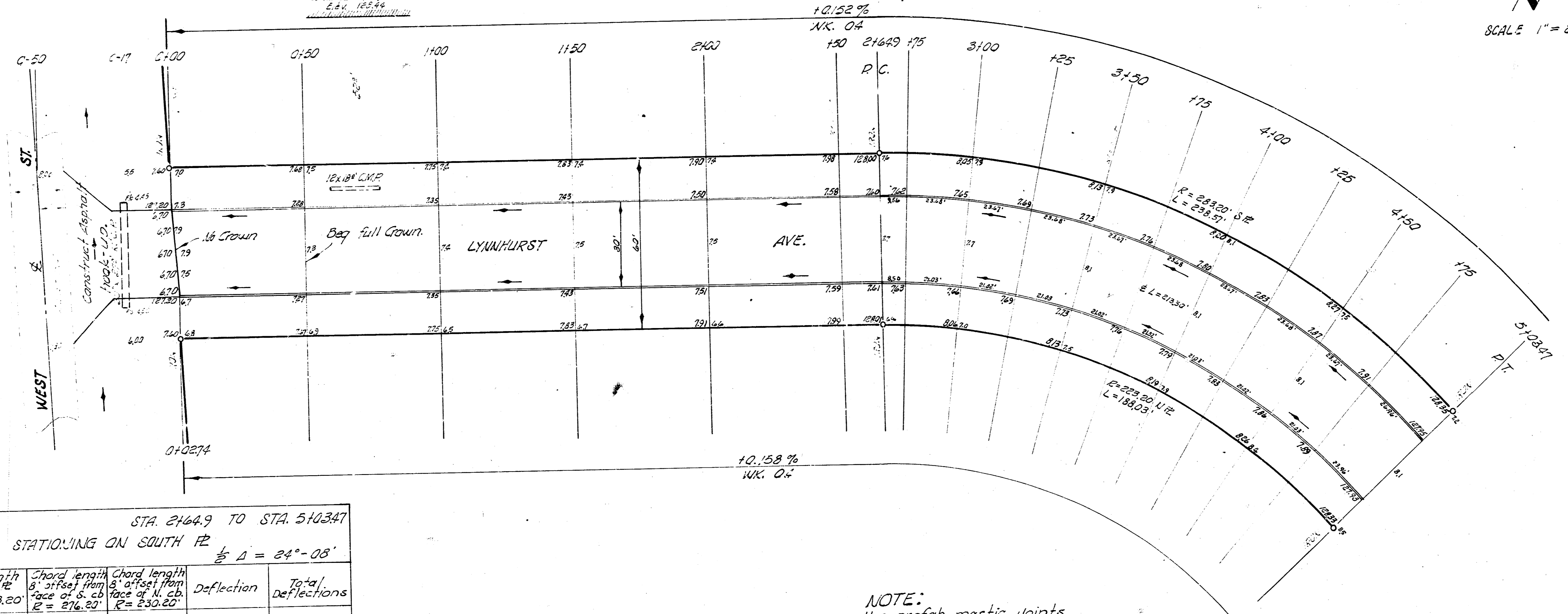


B.M. 120.08 R.R. Spike WS HLP ES. West St. - S1 Lynn Hurst west.  
 B.M. 120.05 R.R. Spike ES HLP NW OTT # Lynn Hurst  
 Base-Line & Stationing on South #2 of Lynn Hurst Ave.

GRAND TOTALS		FILL COMPACTION	
EKAVALATION	PROP.	CITY	PROP.
145.5	130.3	0.5	0.0
110%	16.6	130.3	
182.1	1439.1	Cu Yds.	

SCALE 1" = 20'

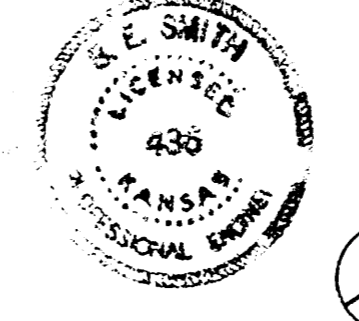


CURVE DATA STA. 2+64.9 TO STA. 5+03.47  
 STATIONING ON SOUTH #2  $\frac{1}{2} \Delta = 24^{\circ}-08'$   
 $R = 283.20'$

STATIONS	Arc length South $\frac{1}{2} \Delta$ $R = 283.20'$	Chord length & offset from face of S. cb $R = 276.20'$	Chord length & offset from face of N. cb $R = 289.20'$	Deflection	Total Deflections
2+64.9					
2+75	10.0'	9.54'	8.20'	1° 01' 17"	
3+00	25.00'	24.37'	20.31'	2° 31' 44"	3° 33' 01"
3+25	25.00'	24.35'	20.32'	2° 31' 45"	6° 04' 46"
3+50	25.00'	24.31'	20.31'	2° 31' 44"	8° 36' 30"
3+75	25.00'	24.38'	20.32'	2° 31' 45"	11° 08' 15"
4+00	25.00'	24.37'	20.31'	2° 31' 44"	13° 39' 59"
4+25	25.00'	24.38'	20.32'	2° 31' 45"	16° 11' 44"
4+50	25.00'	24.37'	20.31'	2° 31' 44"	18° 43' 28"
4+75	25.00'	24.37'	20.31'	2° 31' 45"	21° 15' 13"
5+03.47	23.47'	27.75'	23.13'	2° 52' 47"	24° 08' 00"

NOTE:  
 Use prefab mastic joints  
 at P.C. and P.T. of curve.  
 Also install 3 prefab mastic  
 joints between the P.C.  
 and P.T.

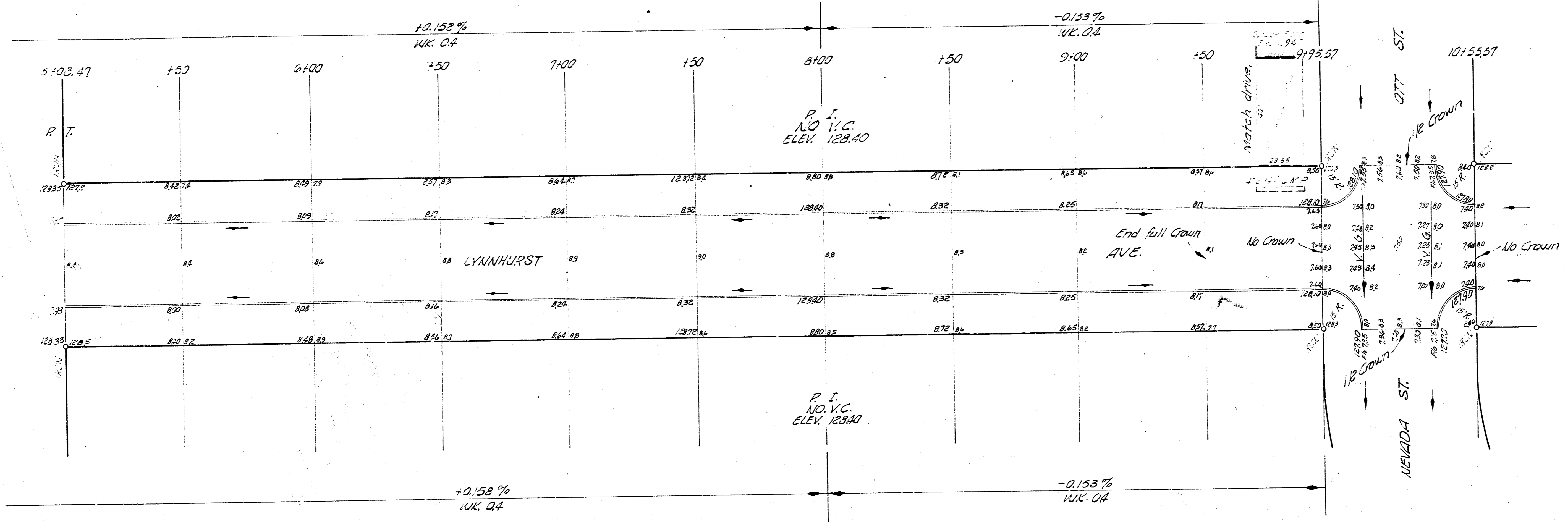
NOTICE TO CONTRACTOR:  
 All entrance pipes are to be  
 disposed of in accordance with  
 instructions of the City dirt checker.



LYNNHURST AVE.  
 NW OTT ST. TO NW WEST ST.  
 30' CONG. & CB.  
 CITY OF WICHITA, KAN.  
 B. E. SMITH CITY ENGINEER  
 AUG. 1958, PROJ. NO. C8-130

S. 11. 03. 05 R. R. Spike ES HLP NW DTT of Lynnhurst.

SCALE 1" = 20'



LYNNHURST AVE.  
 ALL DTT TO NW. WEST

2/4

S. 11. 03. 05 - 80