

B.M. 'X' ON ECB WASH. AVE & N.L. GARDEN PARK ADDN ELEV. 95.24

B.M. LARGE NAIL S.S. POWER POLE N.L. GARDEN PARK ADDN 2' WEST OF W.C.B. I.D.A. ELEV. 96.36

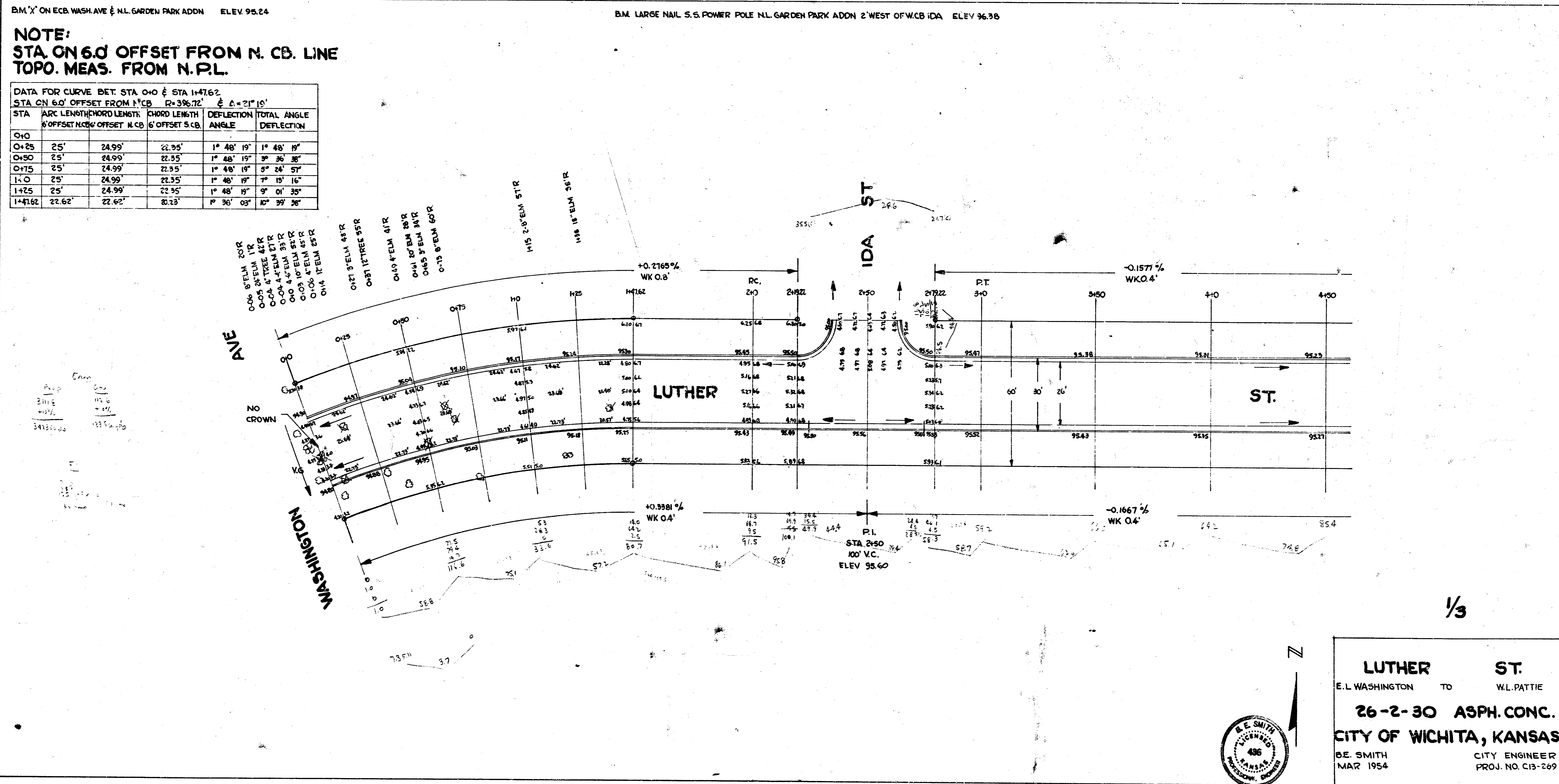
NOTE:
 STA. ON 6.0' OFFSET FROM N. CB. LINE
 TOPO. MEAS. FROM N.P.L.

DATA FOR CURVE BET. STA. 0+0 & STA. 1+416.2
 STA. ON 6.0' OFFSET FROM N.C.B. $R=396.72'$ $\Delta=21^{\circ}19'$

STA.	ARC LENGTH	CHORD LENGTH	CHORD BEARING	DEFLECTION ANGLE	TOTAL ANGLE	DEFLECTION
0+0						
0+25	25'	24.99'	22.55'	1° 48' 19"	1° 48' 19"	
0+50	25'	24.99'	22.55'	1° 48' 19"	3° 36' 38"	
0+75	25'	24.99'	22.55'	1° 48' 19"	5° 24' 57"	
1+0	25'	24.99'	22.55'	1° 48' 19"	7° 13' 16"	
1+25	25'	24.99'	22.55'	1° 48' 19"	9° 01' 35"	
1+416.2	22.62'	22.62'	22.23'	1° 36' 03"	10° 39' 38"	

SUNNY WALK
 Plan
 Checked
 2/7

Err
 311.5
 311.5
 311.5

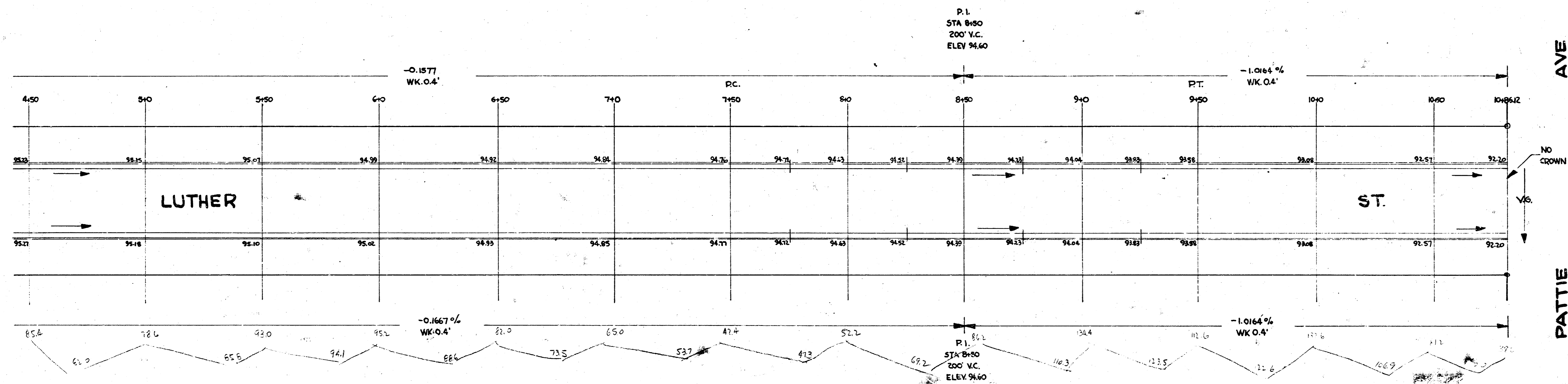


1/3



LUTHER ST.
 E.L. WASHINGTON TO W.L. PATTIE
 26-2-30 ASPH. CONC.
CITY OF WICHITA, KANSAS
 B.E. SMITH
 MAR 1954
 CITY ENGINEER
 PROJ. NO. C19-269

B.M. N.E. COR. CONC. POST ON NO W 1231 LUTHER (S.E. COR. LUTHER & PATTIE) ELEV 94.48



2/3



LUTHER ST.
PROJ. NO. C13-269