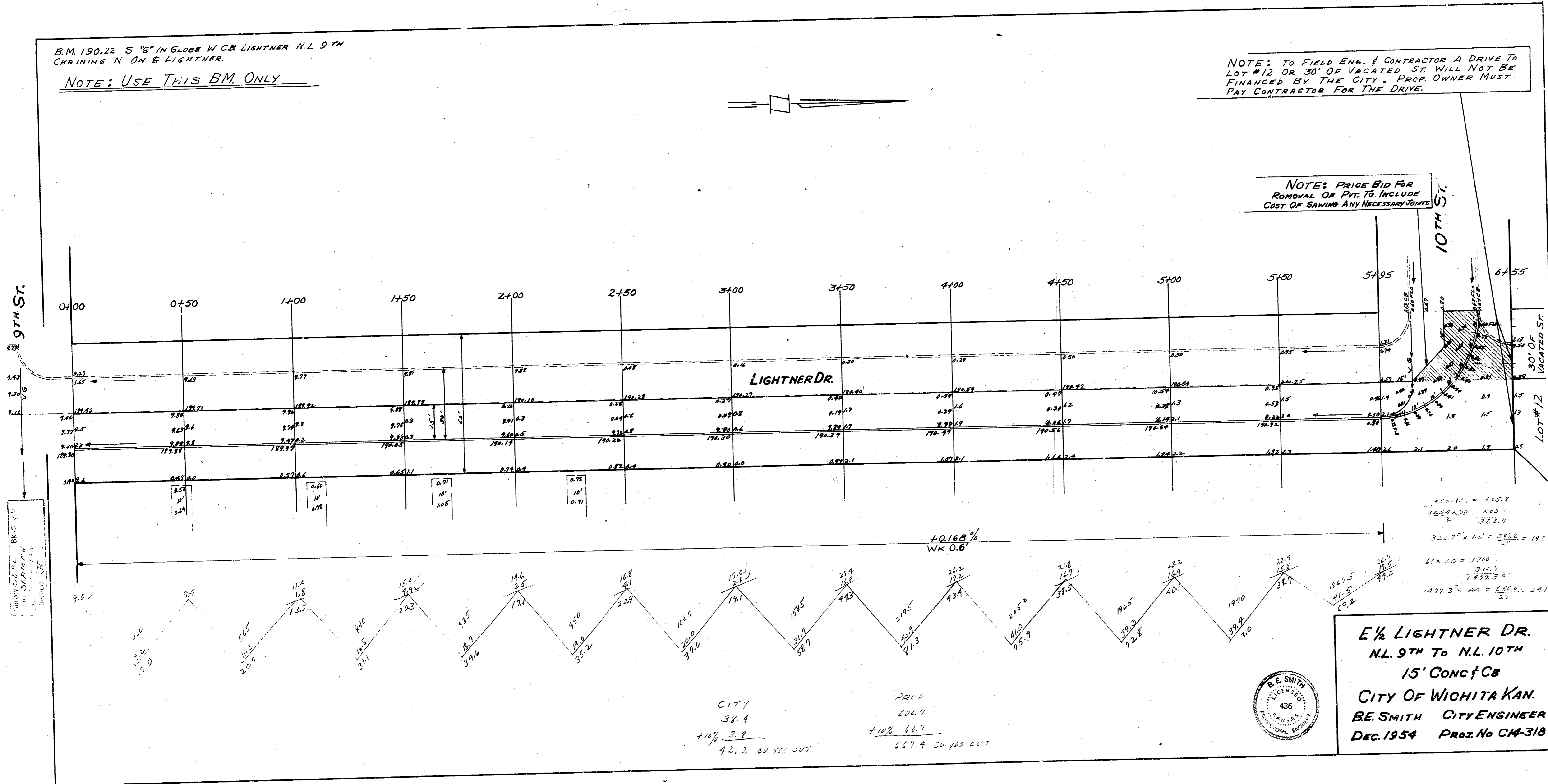


B.M. 190.22 5 1/8" IN GLOBE W.C.B. LIGHTNER N.L. 9TH
 CHAINING N ON E LIGHTNER.

NOTE: USE THIS B.M. ONLY

NOTE: TO FIELD ENG. & CONTRACTOR A DRIVE TO
 LOT #12 OR 30' OF VACATED ST. WILL NOT BE
 FINANCED BY THE CITY - PROP. OWNER MUST
 PAY CONTRACTOR FOR THE DRIVE.

NOTE: PRICE BID FOR
 REMOVAL OF PAV. TO INCLUDE
 COST OF SAWING ANY NECESSARY JOINTS



$140 \times 11 = 1540$
 $32.38 \times 20 = 647.6$
 32.37
 $322.77 \times 12 = 3873.24$
 $60 \times 30 = 1800$
 322.7
 7477.3
 $1477.3 \times 11 = 16250.3$

E 1/2 LIGHTNER DR.
 N.L. 9TH TO N.L. 10TH
 15' CONC & CB
 CITY OF WICHITA KAN.
 B.E. SMITH CITY ENGINEER
 DEC. 1954 Proj. No. CM-318



CITY 38.4
 +10% 3.9
 42.3 32.700 CUT

2004
 606.9
 +10% 68.7
 675.6 32.700 CUT