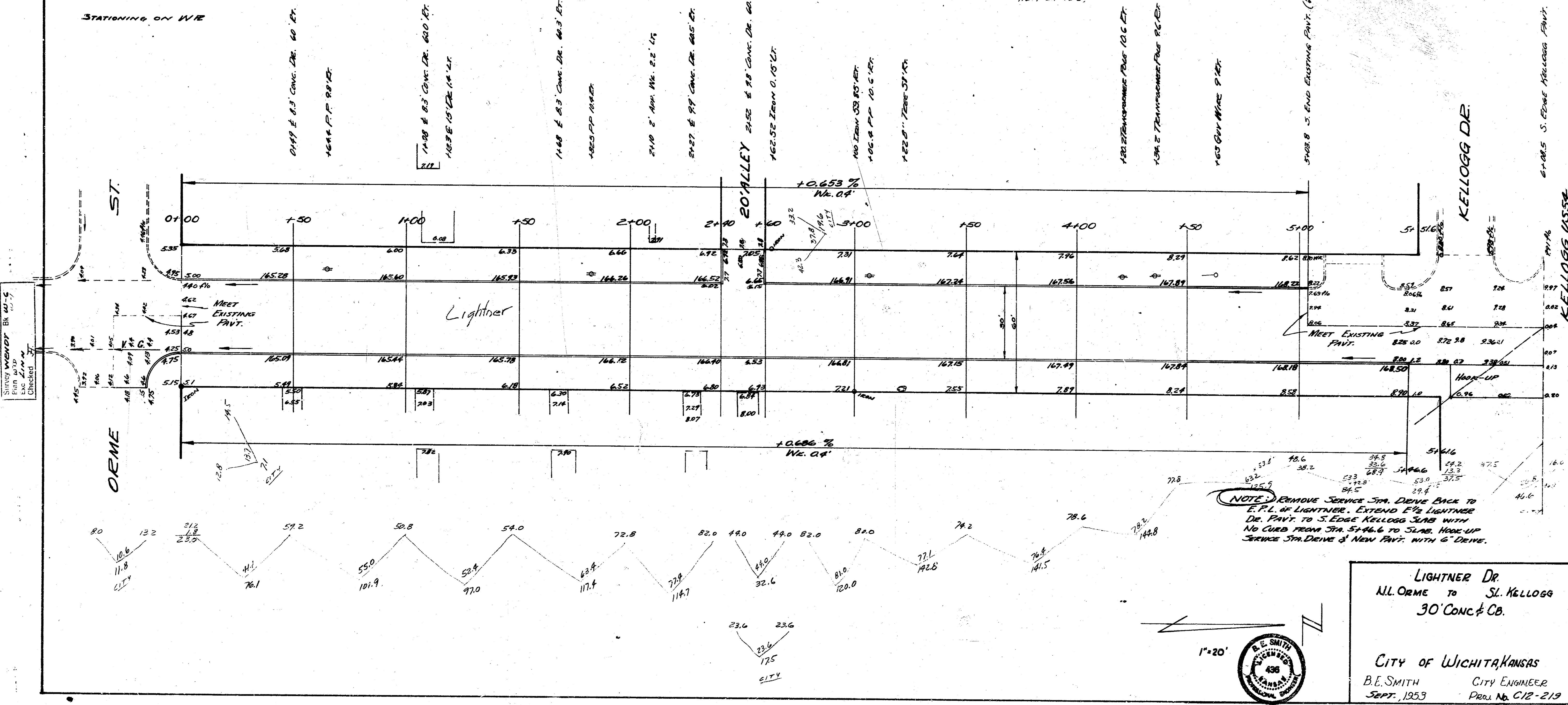


B.M. 173 ON TOP OF N.E. RAIL WENDON PUMP ISLAND HUDSON STATION 3 SIDE KELLOGG

USE THIS ELEVATION!

STATIONING ON WIE

EXC.
 PAOR City
 1328.6 102.6
 +125.2 212.7
 1461.5 44.405 112.9 41.705



LIGHTNER DR.
 ALL ORME TO ST. KELLOGG
 30' CONC & CB.

CITY OF WICHITA, KANSAS
 B.E. SMITH CITY ENGINEER
 SEPT. 1953 PROJ. NO. C12-219