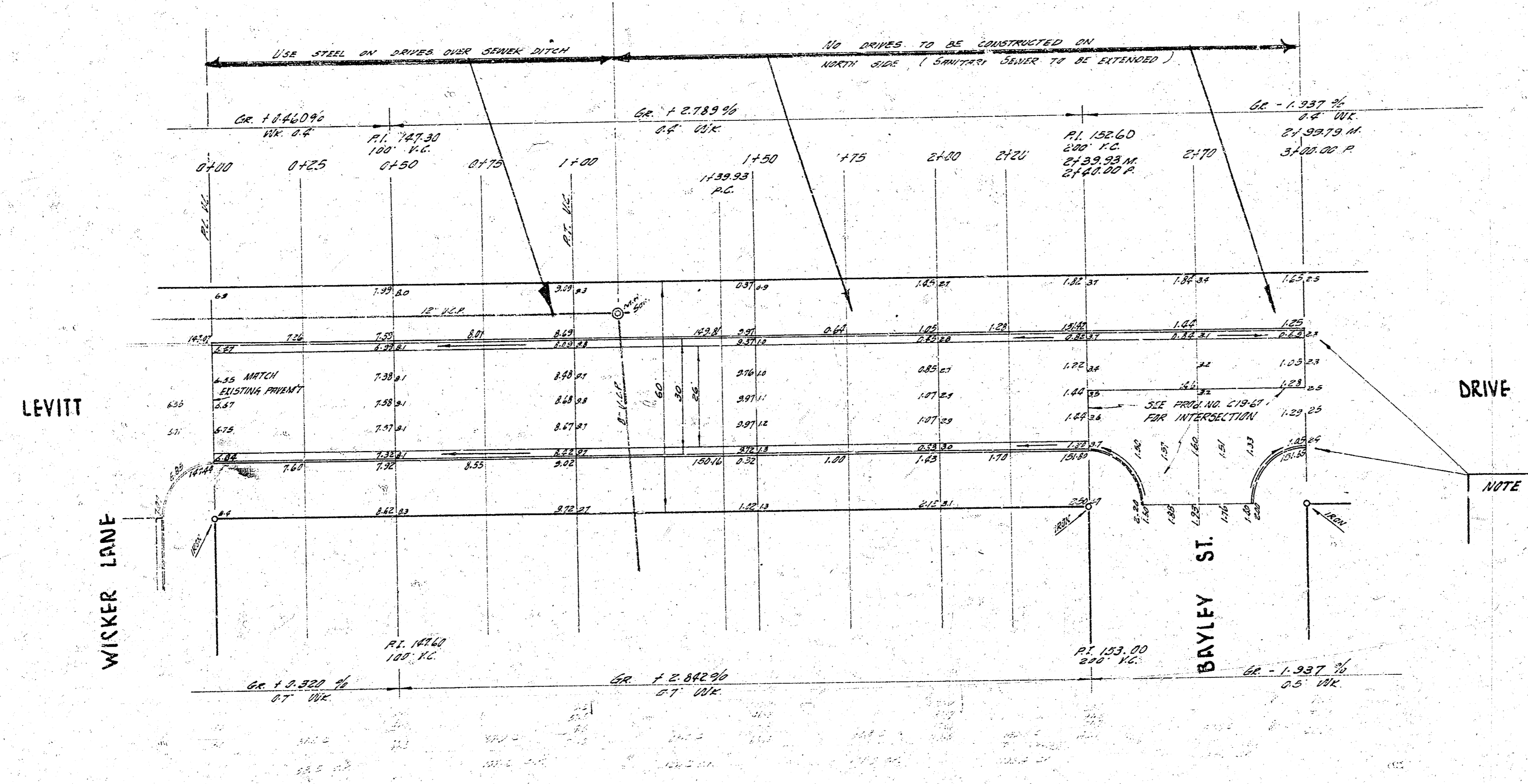


BM 121.68 3.11' LDC. CONC. PORCH W.S. LEVITT 15' W. OF ELINE BLACKWILL



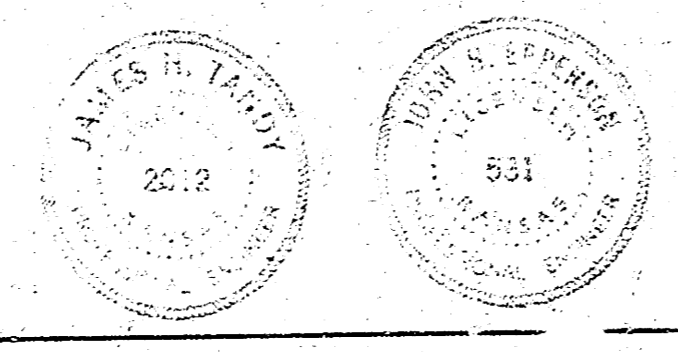
NOTE TO CONTRACTOR
 This project will be constructed under the supervision of the CITY ENGINEER and conforming to the SPECIFICATIONS of the CITY OF WICHITA. THE CONTRACTOR WILL REIMBURSE THE CITY OF WICHITA FOR ALL COST OF ENGINEERING, PLANS, AND INSPECTION.



NOTE TO FIELD ENGINEER & CONTRACTOR:
 CONTRACTOR TO CONSTRUCT DRAINAGE DITCH. DRAINAGE DITCH INCIDENTAL TO PRIVATE CONTRACT.

ESTIMATE OF QUANTITIES
 NO DIMENSIONS FIGURED IN ESTIMATE

QUANTITY	UNIT	AMOUNT	PRICE	TOTAL AMOUNT
774.0	Cu Yds	Excavation		
535.7	Cu Yds	Comp. 15' & Sh		
791.3	Cu Yds	Excavation		
1350	Lbs	Reinf. Steel		



LEVITT DRIVE
 E.L. WICKER ~ E.L. BAYLEY
 26-230 A.C.
CITY OF WICHITA, KANSAS
 B.E. SMITH CITY ENGINEER
 DATE: PRIVATE CONTRACT