

B.M. - 148.89 SW cor conc porch No NE cor Zimmerly & Paige
 B.M. - 141.19 Top curb NL Zimmerly & E. curb Levitt
 B.M. - 139.81 " in top NE cor E headwall RCBC on Rock Road - 400' S. of Terrpike.

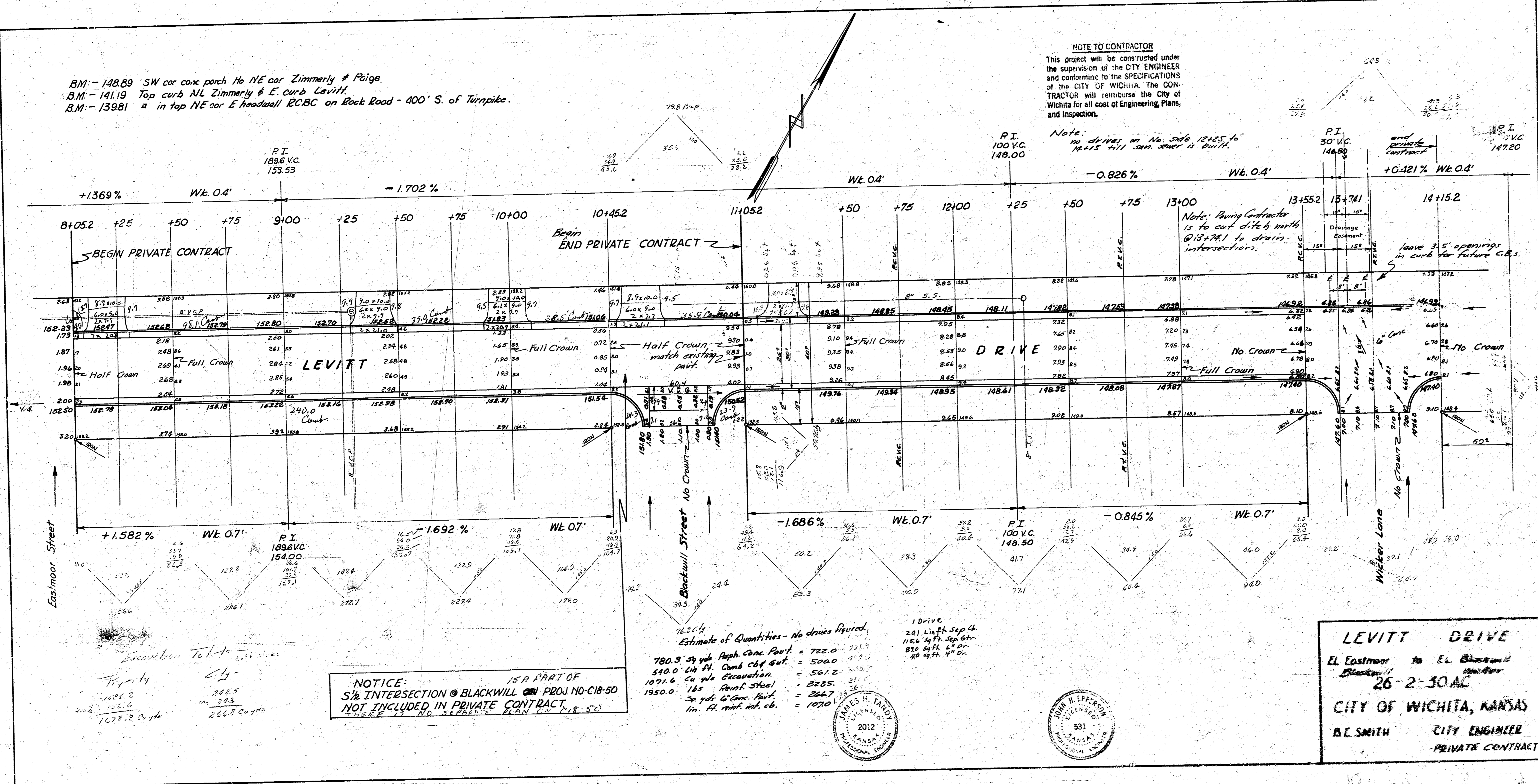
NOTE TO CONTRACTOR
 This project will be constructed under the supervision of the CITY ENGINEER and conforming to the SPECIFICATIONS of the CITY OF WICHITA. The CONTRACTOR will reimburse the City of Wichita for all cost of Engineering, Plans, and Inspection.

Note: no drives on No. 5th 18165 to 18415 4"11 sewer is built.

Note: Paving Contractor is to cut ditch with 6"18"18"1 to drain intersections.

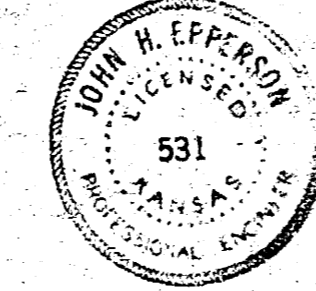
leave 3.5' openings in curb for future C.B.s.

Survey done March 28, 1912
 by
 L. H. Green
 Engineer 277



Estimate of Quantities - No drives figured.
 780.3 cu yds. 8" conc. Pavt. = 722.0
 540.0 cu yds. 4" comb. c&g. Pavt. = 500.0
 1071.6 cu yds. Excavation = 561.2
 1950.0 cu yds. 18" sand. Pavt. = 222.5
 100.0 cu yds. 4" comb. c&g. Pavt. = 107.0

NOTICE:
 IS A PART OF
 S 1/2 INTERSECTION @ BLACKWILL PROJ. NO. C18-50
 NOT INCLUDED IN PRIVATE CONTRACT.



LEVITT DRIVE
 EL Eastmoor to EL Blackwill
 Blackwill
 26-2-30AC
CITY OF WICHITA, KANSAS
 B. E. SMITH CITY ENGINEER
 PRIVATE CONTRACT