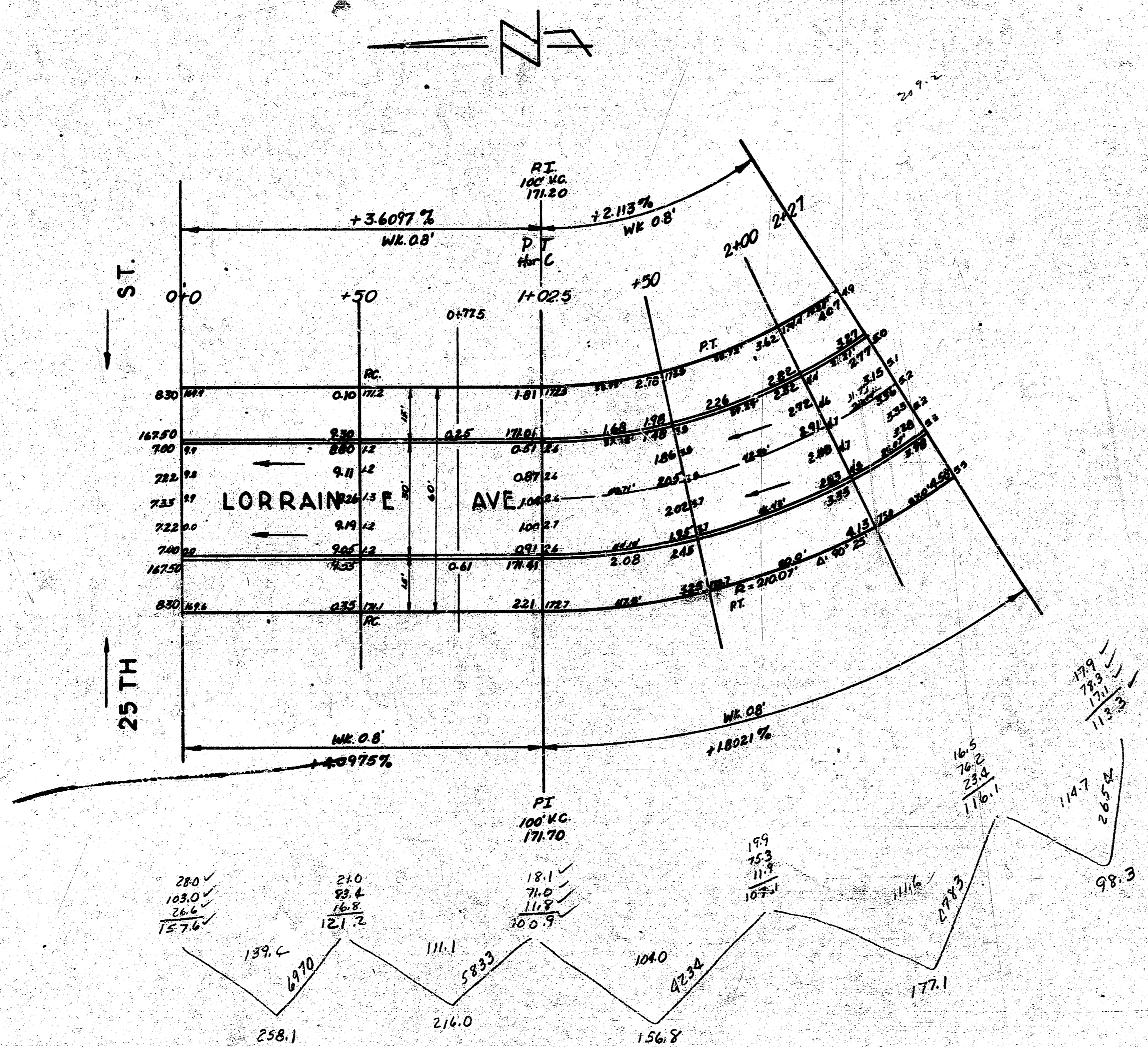


B.M. 179.37 Standard S.E. Cor. Hillside & 25th

Note: Stationing is on W.P.L.

Excavation

Property -	258.1
	216.0
	156.8
	177.1
	98.3
	906.3
+10%	90.6
	996.9 cu yds.



LORRAINE AVE.
 SL. 25TH ST. to S.L. 8. BIK. K.
 Audrey Mallock
 30 Conc. & Cb.
 CITY OF WICHITA, KANS.
 L.K. WHITE CITY ENGINEER
 SEPT. 1951 PROJ. NO. C11-71

