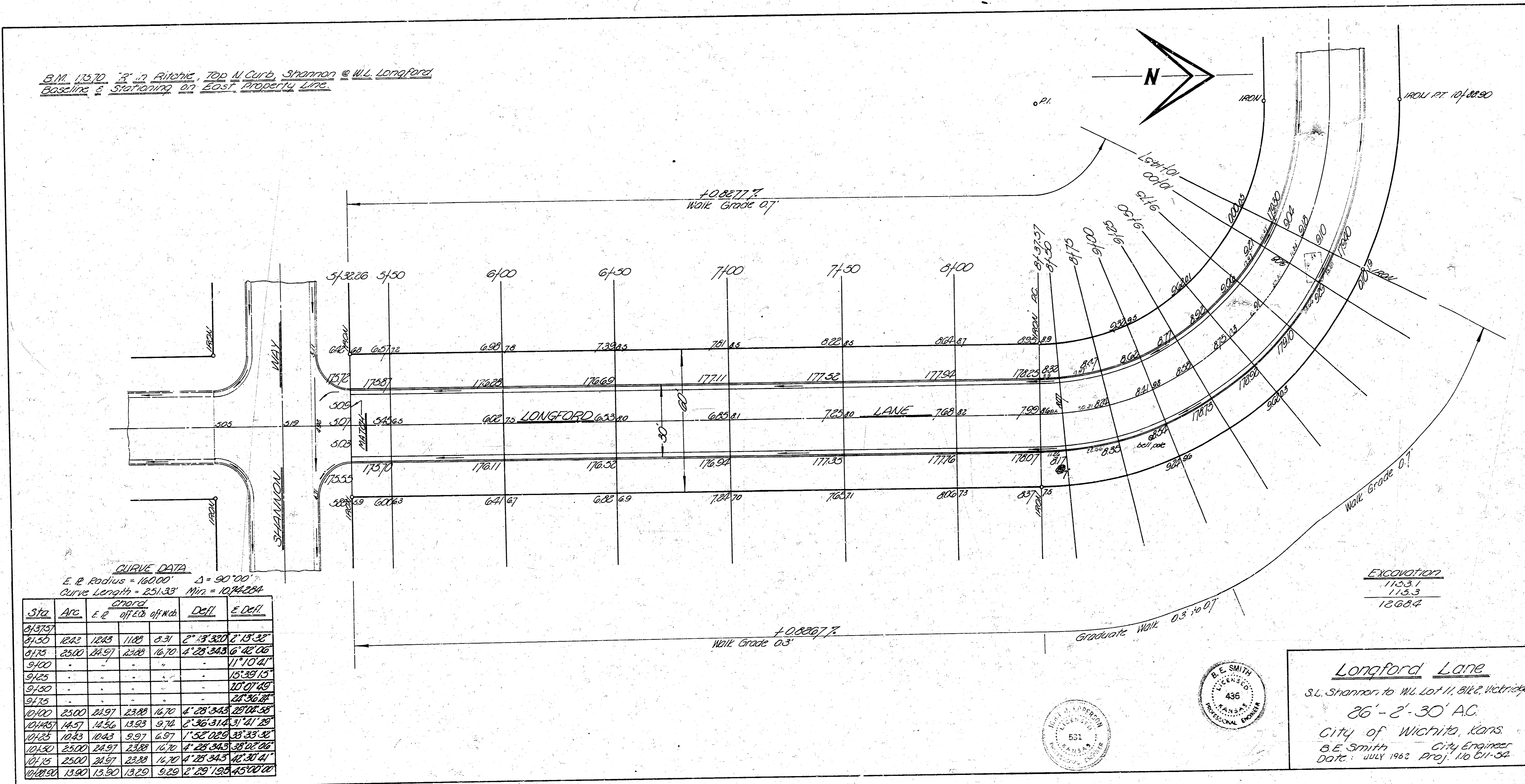


B.M. 115.70 "3" in Fitchie, Top of Curb, Shannon @ W.L. Longford
Baseline & Stationing on East Property Line.



CURVE DATA
 E. R. Radius = 160.00' Δ = 90°00'
 Curve Length = 251.33' Min = 107.6254'

Sta	Arc	Chord		Off	Dist	E. Off
		E. R.	off EOB	off Nds	Dist	E. Off
513.95						
51.50	12.43	12.43	11.00	0.31	2° 3' 32"	2' 13' 32"
51.75	25.00	24.97	23.48	1.49	4° 28' 34.3"	6' 42' 06"
51.90					11° 10' 41"	
51.95						15' 39' 13"
51.99						20' 07' 49"
52.00						24' 36' 37"
52.00	25.00	24.97	23.88	1.09	4° 28' 34.3"	25' 04' 58"
52.05	12.43	12.43	13.88	9.78	2° 36' 31.4"	31' 41' 28"
52.15	10.23	10.43	9.97	6.97	1° 52' 02.9"	35' 33' 32"
52.15	25.00	24.97	23.88	1.09	4° 28' 34.3"	38' 02' 06"
52.15	25.00	24.97	23.88	1.09	4° 28' 34.3"	40' 30' 41"
52.19	13.90	13.90	13.20	9.29	2° 29' 18.5"	45' 00' 00"

Excavation
 115.3
 115.3
 1268.4

Longford Lane

S.L. Shannon to W.L. Lot 11, Block, Vicksburg
 26' - 2' - 30' AC
 City of Wichita, Kans.
 B.E. Smith - City Engineer
 Date: July 1962 Proj. 110 211-52

