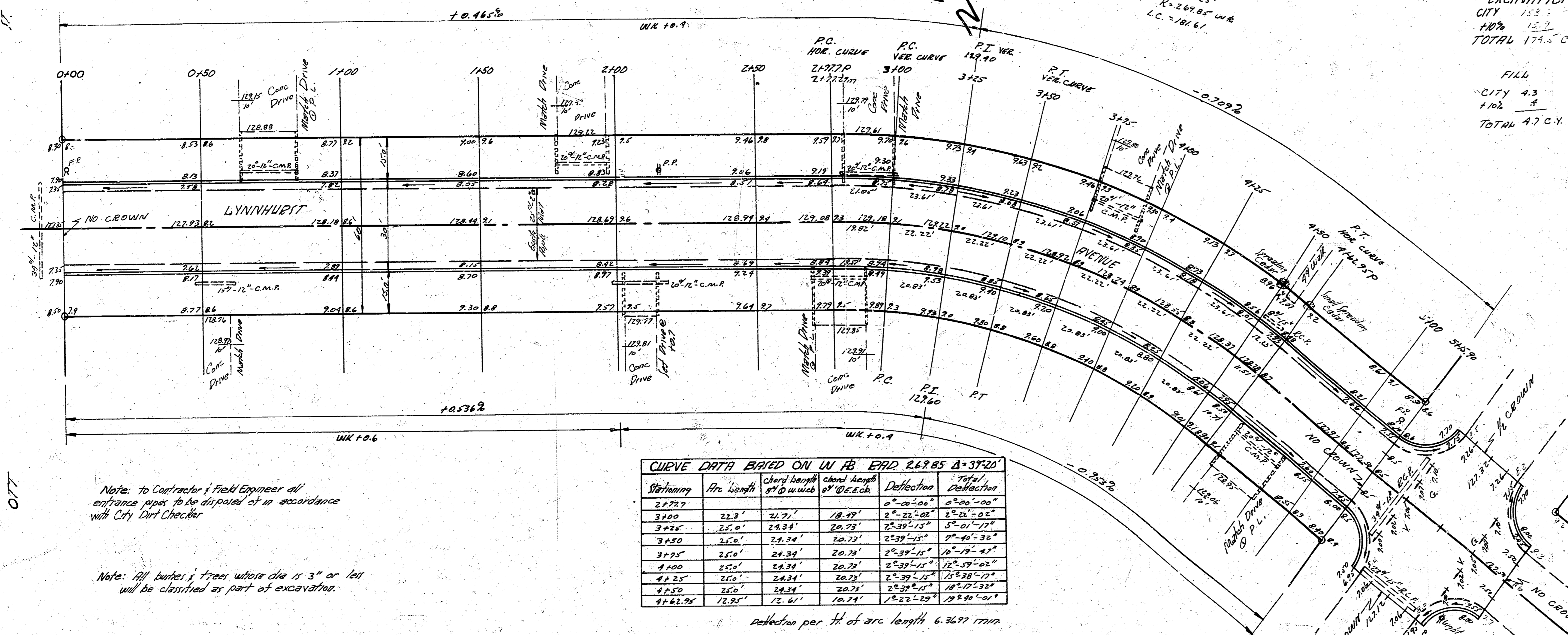


B.M. TOP N.W. COR. ROCK HANDRAIL ON PORCH 2<sup>ND</sup> FLOOR ON E.I. IRWIN ST. 132.67  
 B.M. N.E. COR. 1<sup>ST</sup> FLOOR 401 1/2 W. LYNNHURST 130.80  
 MEASUREMENTS IN W. LYNNHURST FROM 10 TO 100

EXCAVATION  
 CITY 153.3 PROP 4.2  
 10% 15.2 1.0% 2.2  
 TOTAL 174.5 CY TOTAL 75.2 CY

FILL  
 CITY 4.3  
 10% .9  
 TOTAL 4.7 CY

NOTE:  
 Use prefab mastic joints at  
 P.C. and P.T. of curve.  
 Also use 2 prefab mastic  
 joints between the R.C.  
 and P.T.



CURVE DATA BASED ON U.S. ROAD 2.6885 Δ=37°20'

Stationing	Arc Length	Chord Length of 10' arcs	Chord Length of 20' arcs	Deflection of 10' arcs	Deflection of 20' arcs
2+77.5	22.3'	21.71'	18.89'	2°-21'-00"	4°-20'-00"
3+00	25.0'	24.34'	20.77'	2°-39'-13"	5°-21'-00"
3+25	25.0'	24.34'	20.77'	2°-39'-13"	5°-21'-00"
3+50	25.0'	24.34'	20.77'	2°-39'-13"	5°-21'-00"
3+75	25.0'	24.34'	20.77'	2°-39'-13"	5°-21'-00"
4+00	25.0'	24.34'	20.77'	2°-39'-13"	5°-21'-00"
4+25	25.0'	24.34'	20.77'	2°-39'-13"	5°-21'-00"
4+50	25.0'	24.34'	20.77'	2°-39'-13"	5°-21'-00"
4+62.98	12.98'	12.61'	10.74'	1°-22'-29"	2°-30'-00"

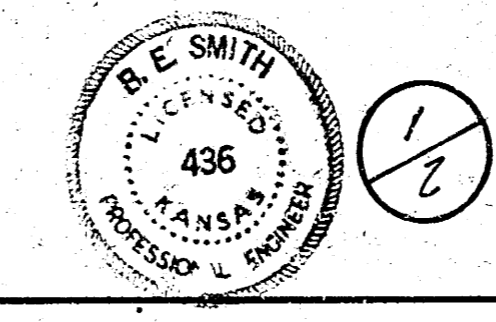
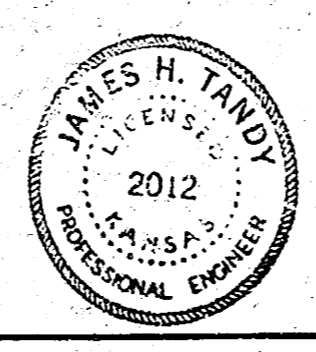
Deflection per 1/4 of arc length = 6.3697 1/100'

Note: To Contractor & Field Engineer all  
 entrance pipes to be disposed of in accordance  
 with City Dirt Checker

Note: All bushes & trees whose dia is 3" or less  
 will be identified as part of excavation.

Checked by  
 Date

0.77



LYNNHURST AVE  
 N.W. 10<sup>TH</sup> ST. - N.W. 16<sup>TH</sup> ST.  
 30' CONC & CB  
 CITY OF WICHITA, KANSAS  
 B.E. SMITH CITY ENGINEER  
 DATE: 11.13.1958 PROJ. NO. CIT-118