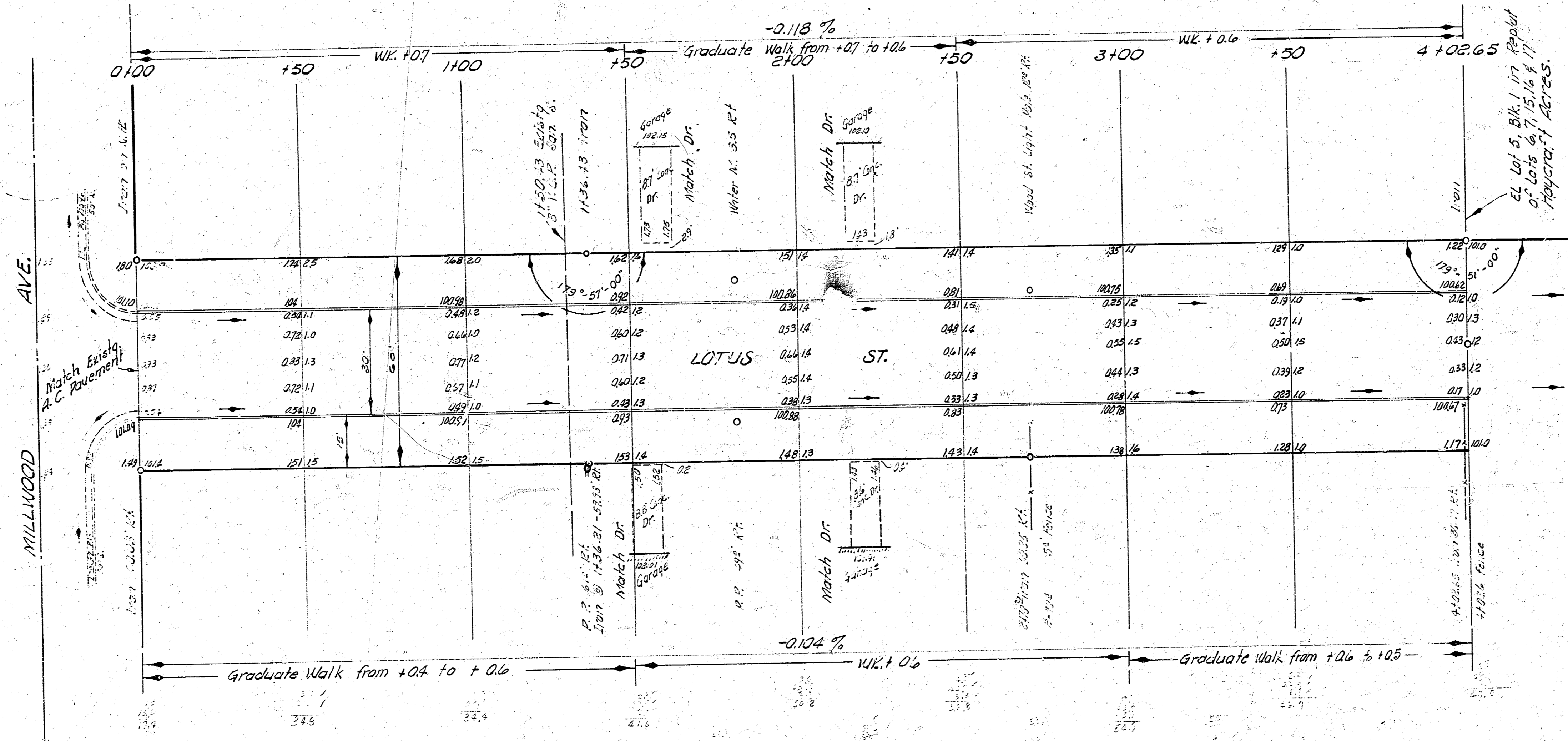


B. M. 103.145 SE cor. conc. Patch No\* 2233 Millwood Ave.  
 B. M. 101.55  $\frac{1}{2}$ " Bridge Spike on SE side of Wood St Light Pole at NW cor. Haskell & Millwood.  
 Stationing from west to east along North 12' of Lotus St.

EXCAVATION  
 PROF  
 648.6  
 +10%  $\frac{64.9}{713.5}$  cu. YDS.

SCALE 1" = 20'



1/2" x 1/2" x 1/2" x 1/2"  
 1/2" x 1/2" x 1/2" x 1/2"  
 1/2" x 1/2" x 1/2" x 1/2"

**LOTUS ST.**  
 EL MILLWOOD TO EL LOT 5, BLK. 1  
 IN REPLAT OF HAYCRAFT ACRES  
 30 Conc. & Cb  
 CITY OF WICHITA, KANSAS  
 B. E. SMITH CITY ENGINEER  
 APRIL 1959, PROJ. NO C18-14

