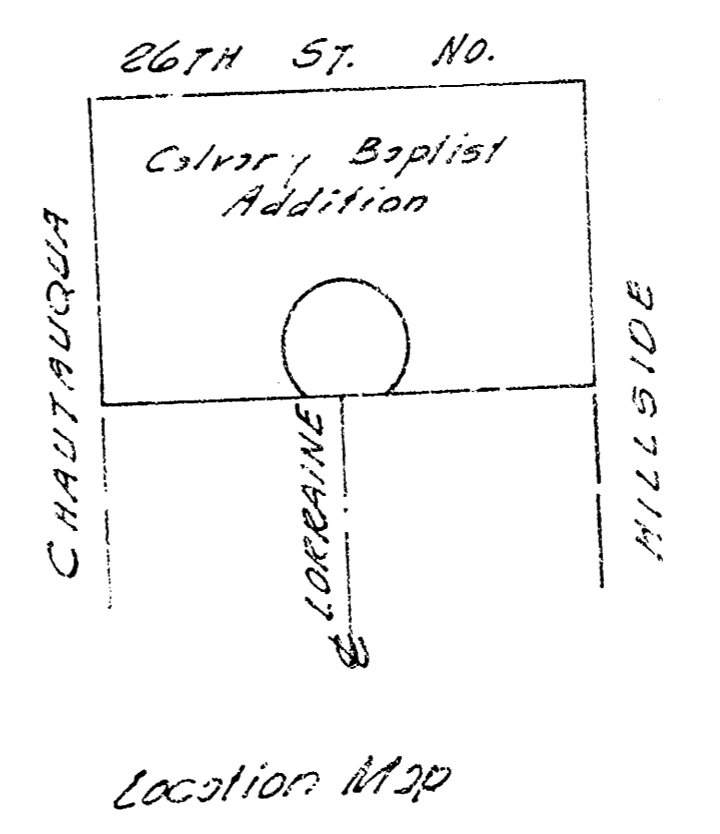
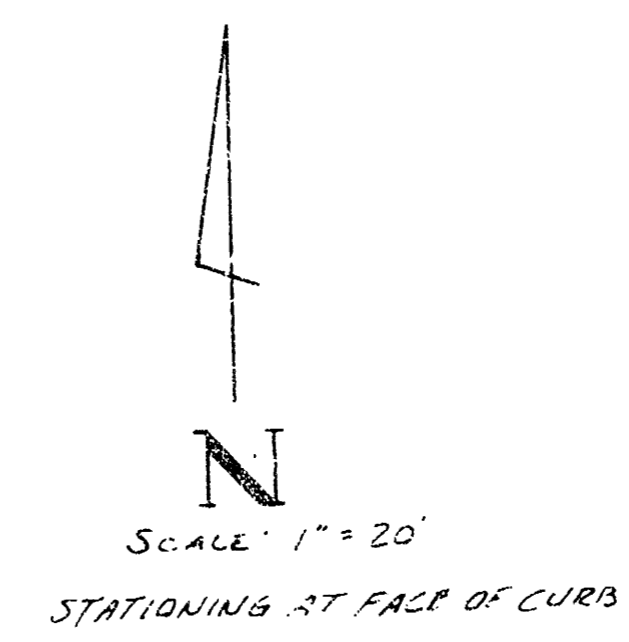
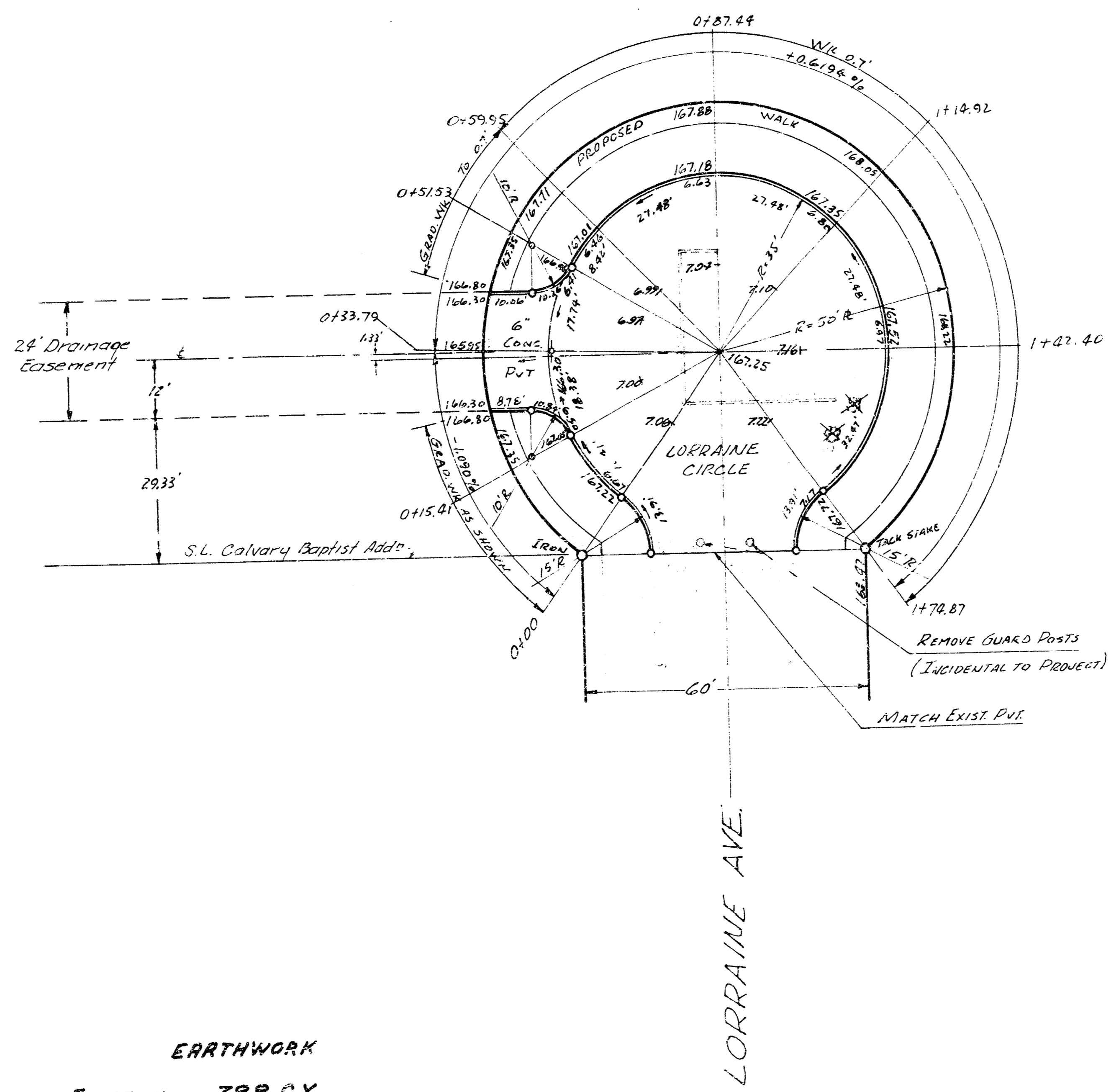


54' x 179.40' City B.M. Dist. 26th E. & 28th So. of E. 25th & Hillside
 B.M. 169.86 N.W. Cor. Conc. Pk. Ho. # 2638 N. Lorraine

Drawn by: [unclear] 12/14/08
 Checked by: [unclear]
 City Engineer: [unclear]



REMARKS
 TYPE OF SUB-GRADE TREATMENT SHALL BE DETERMINED BY THE FIELD ENGINEER. SITE TO BE TREATED IN ANY QUANTITY OF LIME OR PORTLAND CEMENT TREATMENT. SUB-GRADE TREATMENT OR ANY COMBINATION THEREOF.

NO. 10 FILL (SAND) SHALL BE USED FOR ALL PAVING AND FINISHING. CONTACT THE CITY ENGINEER FOR MORE INFORMATION.

EARTHWORK	
Excavation	788 C.Y.
+10%	79 C.Y.
TOTAL	867 C.Y.

- TREE REMOVAL

LORRAINE CIRCLE
 S.L. CALVARY BAPTIST ADDY
 TO & INCLUDING CUL-DE-SAC
 6" CONCRETE CURB
 CITY OF WICHITA, KANSAS
 R.V. LINN - CITY ENGINEER
 DATE 11/17/08 PROJ. NO. DARS 574022