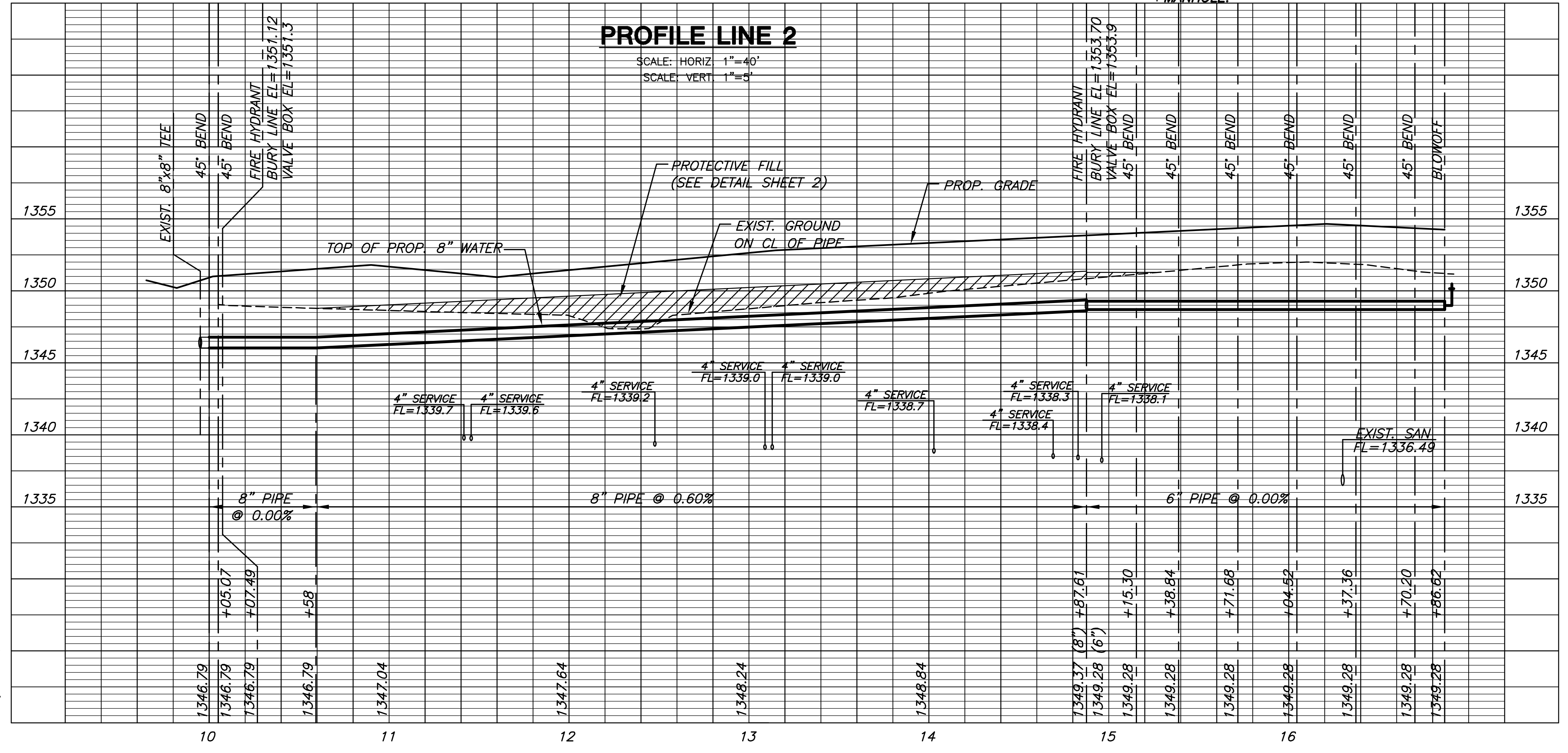


**AS-BUILT OCTOBER 2007**

**PLAN LINE 2**



**PROFILE LINE 2**

**CURVE TABLE**

$\Delta = 17^\circ 58' 07''$  R = 877.00' T = 138.66' L = 275.04' LC = 273.91'

CURVE DATA BASED ON WATERLINE  $\Delta/2 = 08^\circ 59' 03''$

STATION	ARC	CHORD LENGTH		DEFLECTION	TOTAL DEFLECTION
		6'LT Offset	6'RT Offset		
10+35.84	-	-	-	00'00"00"	00'00"00"
10+50.00	14.16'	14.06'	-	00'27"45"	00'27"45"
10+75.00	25.00'	24.83'	-	00'49"00"	01'16"45"
11+00.00	25.00'	24.83'	-	00'49"00"	02'05"45"
11+25.00	25.00'	24.83'	-	00'49"00"	02'54"45"
11+50.00	25.00'	24.83'	-	00'49"00"	03'43"45"
11+75.00	25.00'	24.83'	-	00'49"00"	04'32"45"
12+00.00	25.00'	24.83'	-	00'49"00"	05'21"45"
12+25.00	25.00'	24.83'	-	00'49"00"	06'10"45"
12+50.00	25.00'	24.83'	-	00'49"00"	06'59"45"
12+75.00	25.00'	24.83'	-	00'49"00"	07'48"44"
13+00.00	25.00'	24.83'	-	00'49"00"	08'37"44"
13+10.88	10.88'	10.80'	-	00'21"19"	08'59"03"

Def/Ft = 1.95995 Min.

**CURVE TABLE**

$\Delta = 14^\circ 13' 53''$  R = 823.00' T = 102.74' L = 204.42' LC = 203.90'

CURVE DATA BASED ON WATERLINE  $\Delta/2 = 07^\circ 06' 56''$

STATION	ARC	CHORD LENGTH		DEFLECTION	TOTAL DEFLECTION
		6'LT Offset	6'RT Offset		
13+10.88	-	-	-	00'00"00"	00'00"00"
13+25.00	14.12'	14.22'	-	00'29"29"	00'29"29"
13+50.00	25.00'	25.18'	-	00'52"13"	01'21"42"
13+75.00	25.00'	25.18'	-	00'52"13"	02'13"55"
14+00.00	25.00'	25.18'	-	00'52"13"	03'06"08"
14+25.00	25.00'	25.18'	-	00'52"13"	03'58"21"
14+50.00	25.00'	25.18'	-	00'52"13"	04'50"34"
14+75.00	25.00'	25.18'	-	00'52"13"	05'42"46"
14+87.61	12.61'	12.70'	-	00'26"20"	06'09"07"
15+00.00	12.39'	12.48'	-	00'25"53"	06'34"59"
15+15.30	15.30'	15.41'	-	00'31"57"	07'06"57"

Def/Ft = 2.08855 Min.

**LINE 2**  
SHEET TITLE  
1316PPW  
PROJECT NUMBER

DESIGN BY: **DFL**  
DRAWN BY: **KKL**  
CHECKED BY: **GJA**

ISSUED: **October 2007**  
REVISED:

SHEET NO.  
**4 of 11**

PLOT DATE: Tuesday, October 30, 2007 @ 02:33PM

J:\DWG\104294\DWG\WTR\SECOND\AS-BUILT\104294\_C2.DWG