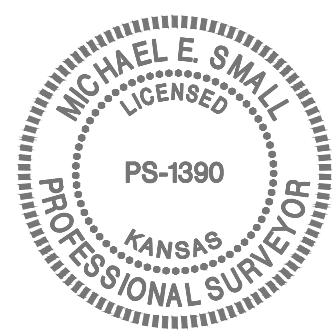
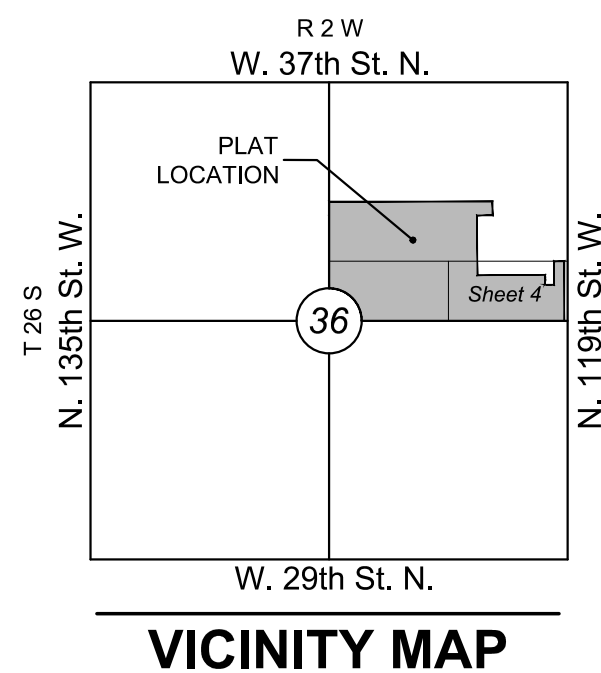


# FINAL PLAT

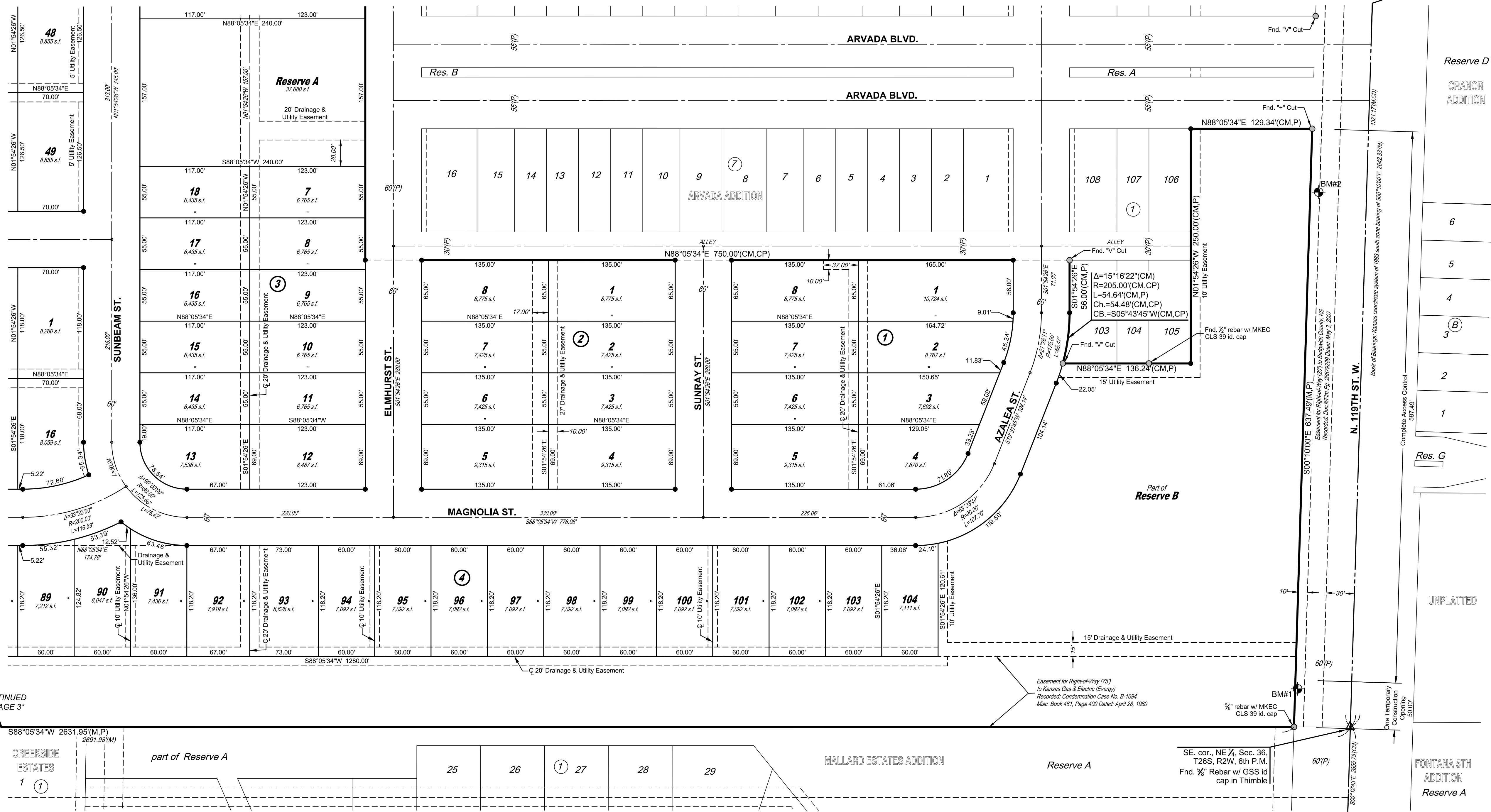
## ARVADA 2ND ADDITION

AN ADDITION TO MAIZE, SEDGWICK COUNTY, KANSAS  
a replat of a portion of Arvada Addition, lying in South Half of the Northeast Quarter of Section 36, Township 26 South, Range 2 West of the 6th Principal Meridian



### LEGEND

- Date of Survey: 11/18/2021
- Section Corner Monument Found or Set
- Found Monument (see annotation for type)
- Set 3/4" rebar w/ MKEC CLS 39 id. cap
- Benchmark
- Measured
- Platted
- Calculated from Measurement
- Calculated from Plat
- Calculated from Described
- Lot
- Block



SW. cor., NE 1/4, Sec. 36, T26S, R2W, 6th P.M.  
Fnd. 3/4" Rebar w/ SRB id cap

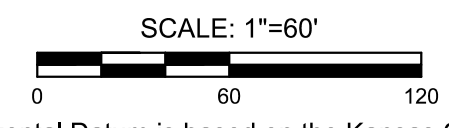
\*CONTINUED ON PAGE 3\*

Easement for Right-of-Way (75') to Kansas Gas & Electric (Energy) Records: Condominium Case No. B-1094 Misc. Book 491, Page 400 Dated April 28, 1960

SE. cor., NE 1/4, Sec. 36, T26S, R2W, 6th P.M.  
Fnd. 3/4" Rebar w/ GSS id cap in Thimble

SE. cor., SE 1/4, Sec. 36, T26S, R2W, 6th P.M.

MINIMUM PAD ELEVATIONS LOWEST OPENINGS		
LOTS inclusive	BLOCK	ELEVATION NAVD 88
104	4	1360.7



The Horizontal Datum is based on the Kansas Coordinate System of 1983, NAD83 (2011), EPOCH: 2010.0000, South Zone and based on the "US Survey foot" definition. Coordinates shown have been modified to the ground using a combined adjustment scale factor of 1.0001200144. State Plane coordinates can be calculated by multiplying the shown values by 0.9998800000. Basis of Bearings for this plat is S00°10'00"E on the East line of the NE 1/4, Sec. 36, T26S, R2W, 6th P.M.

### BENCH MARKS

- BM#1** MAG nail set 40 feet south of power pole in southeast corner of property, in found square cut on south end of a weir wall. 45 feet north and 5 feet east of southeast corner of property.  
N: 1706536.856 E: 1607137.975  
Elev.=1357.74 NAVD88
- BM#2** MAG nail set 15 feet west and 5 feet south of southwest wing wall of storm headwall on west side of 119th Street West.  
N: 1707065.924 E: 1607144.837  
Elev.=1356.78 NAVD88

