

STATE	PROJECT NO.	YEAR	SHEET NO.	TOTAL SHEETS
KANSAS	87 N-0362-01	2007	25	48

PHASE	HANDLING OF TRAFFIC	MAJOR CONSTRUCTION ITEMS	REMARKS
IA	Two-way traffic maintained on outside lanes. Inside lanes of bridge closed.  Sidewalk below the bridge is to be closed in accordance with these plans.	Bridge rehabilitation activities performed in the middle portion of the bridge.	
IB	Traffic Control from Phase IA maintained with modifications shown for Phase IB.  Sidewalk below the bridge is to be closed in accordance with these plans.	Approach slab construction activities performed in the interior lanes of the approach slab.	Once Phase IA construction activities are complete, Traffic Control may be modified to that shown in Phase IB. All other Traffic Control shall be maintained.
IIA	Two-way traffic maintained on inside lanes. Outside lanes of bridge closed.  Sidewalk across and below the bridge is to be closed in accordance with these plans.	Bridge rehabilitation activities performed on the outside portions of the bridge.	
IIB	Traffic Control from Phase II maintained with modifications shown for Phase IIB.  Sidewalk across and below the bridge is to be closed in accordance with these plans.	Approach slab construction activities performed in the exterior lanes of the approach slab.	Once Phase IIA construction activities are complete, Traffic Control may be modified to that shown in Phase IIB. All other Traffic Control shall be maintained.

General Notes:

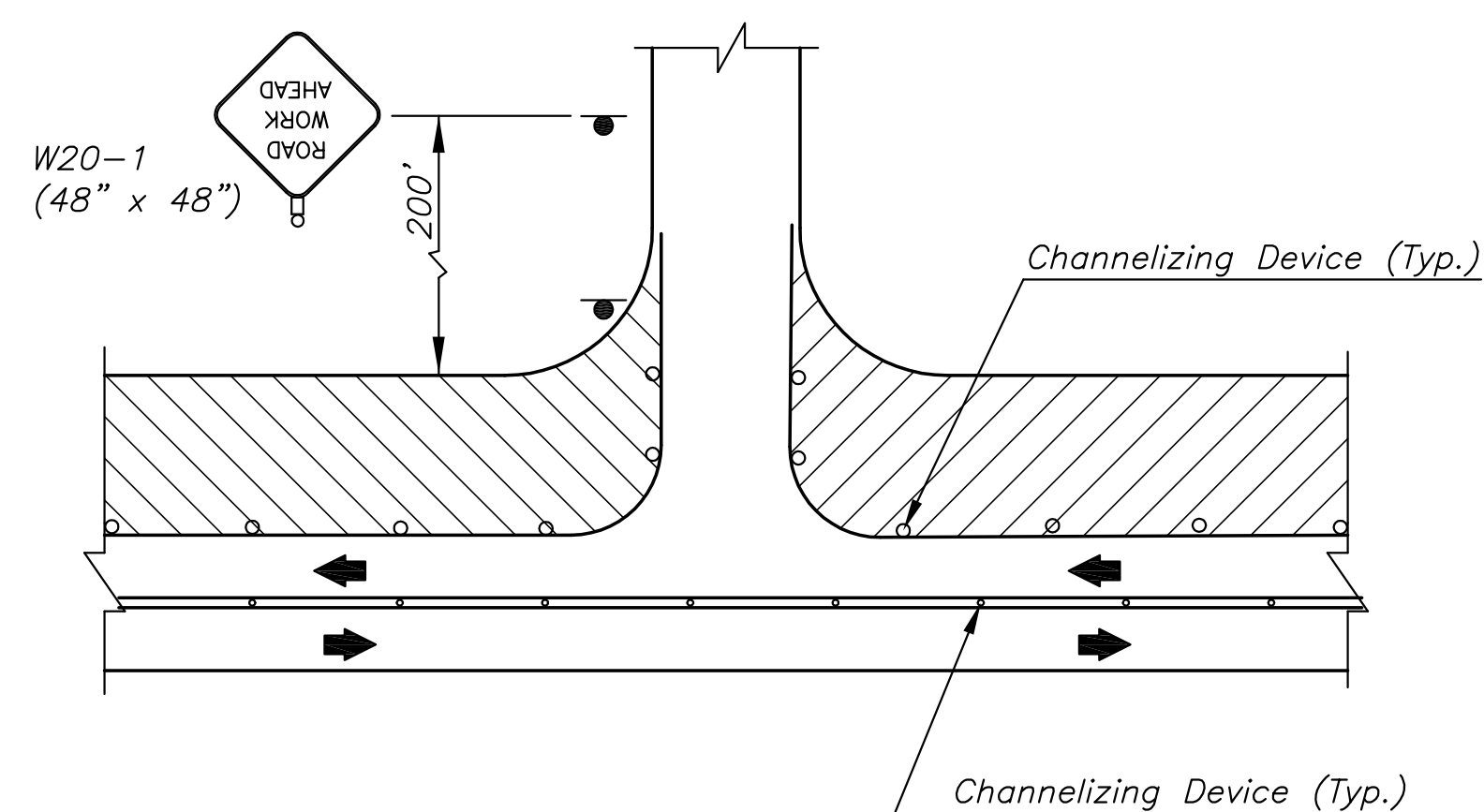
All signs and pavement markings conflicting with construction traffic control shall be covered or removed as directed by the Engineer.

As the various construction activities progress, certain situations may arise that will preclude adhering to the original construction sequence or which, in the opinion of the Contractor, would readily adapt themselves to a more efficient phasing operation. Should this occur, the Contractor may submit to the Engineer an alternative plan for approval.

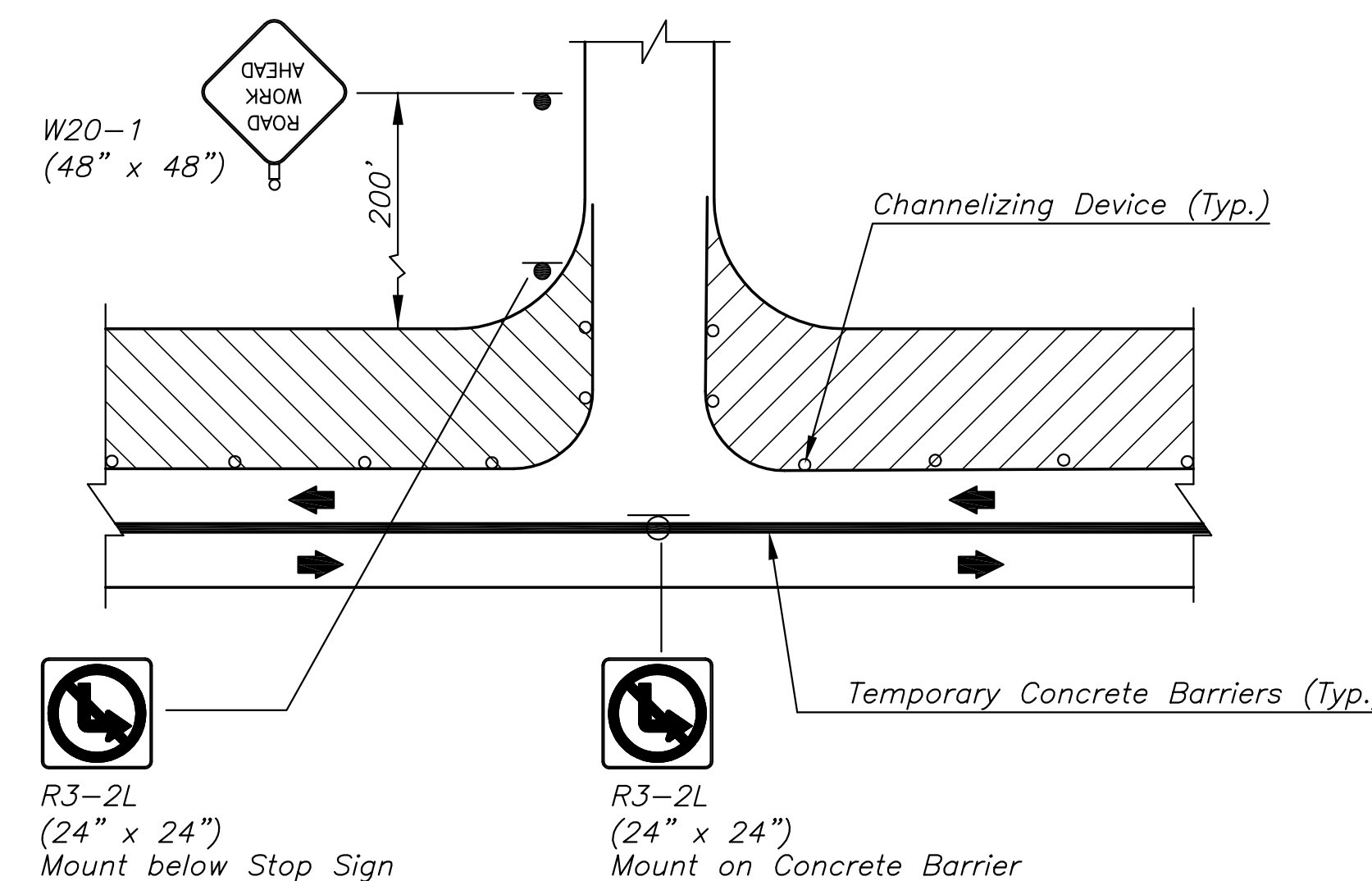
Contractor shall maintain existing drainage system during construction and address local drainage issues as necessary during construction. Temporary drainage measures will be subsidiary to other items in the contract. Contractor shall provide for drainage in sump areas opened to traffic. Ponded stormwater in sump areas will not be allowed.

Contractor shall provide temporary pavement where necessary to bridge grade differentials between new and existing pavement.

Contractor may eliminate all temporary concrete barrier during phase IB and IIB provided proper channelizers are erected in conformance with the MUTCD. Contractor also has the option of placing the temporary concrete barrier in proper position for Phase IIA during Phase IB.



TYPICAL ENTRANCE AND SIDE STREET



TYPICAL ENTRANCE AND SIDE STREET  
(In areas with Temporary Concrete Barriers)

J:\Civil\04223\dwg\TRAFF\04223seq.dwg 09/17/2007 11:42:24 AM CST

KANSAS DEPARTMENT OF TRANSPORTATION			
CONSTRUCTION SEQUENCE			
PROJ. NO. 87 N-0362-01		SEDGWICK CO.	
MKEC ENGINEERING CONSULTANTS, INC. WICHITA, KANSAS			
DESIGNED BY:	JRA	CHECKED BY:	KJS
DRAWN BY:	JB/DPG	DATE:	4/23/07
		SHEET 25 OF 48	