

BENCHMARK:
 BM #1: "□" Cut in Middle of Curb Inlet Top, North Curb of Conrey, Adjacent to SW Corner of Lot 14, Block A, Tyler's Landing 3rd Addition.
 Elev. = 150.29 (1337.69 M.S.L.)

BM #2: "□" Cut in Top of East Curb of High Point, 10' South of End of Return, Adjacent to Lot 1, Block D, Tyler's Landing Addition.
 Elev. = 155.28 (1342.68 M.S.L.)

Curve #4
 Curve Data Based on Centerline
 Rad. = 774' Delta = 117°35' Tangent = 76.64'
 Arc = 152.78' L.C. = 152.53' Def./Ft. = 2.22079 Min.

Station	Arc	Chord Lengths		
		6' Left	Defl.	Total Defl.
2+08.07	-	-	0'00"00"	0'00"00"
2+25.00	16.93'	16.80'	0'37"36"	0'37"36"
2+50.00	25.00'	24.81'	0'55"31"	1'33"07"
2+75.00	25.00'	24.81'	0'55"31"	2'28"38"
3+00.00	25.00'	24.81'	0'55"31"	3'24"09"
3+25.00	25.00'	24.81'	0'55"31"	4'19"41"
3+50.00	25.00'	24.81'	0'55"31"	5'15"12"
3+60.85	10.85'	10.77'	0'24"05"	5'39"17"

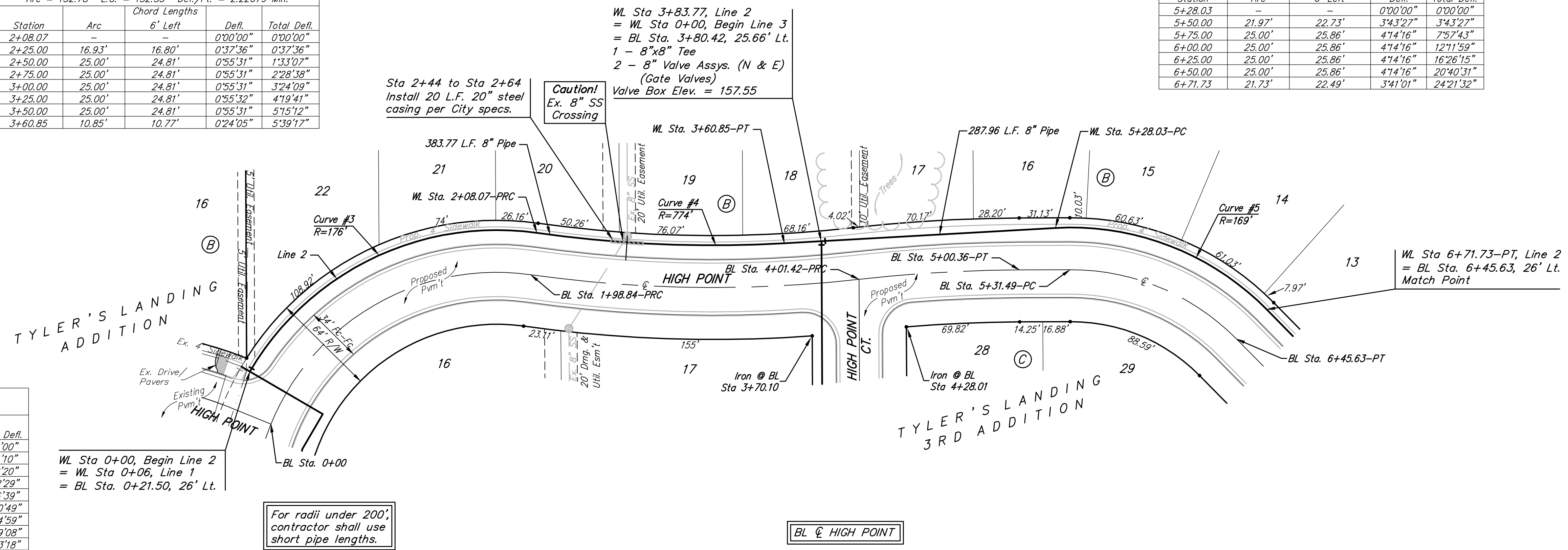
Curve #5
 Curve Data Based on Centerline
 Rad. = 169' Delta = 48°43'04" Tangent = 76.52'
 Arc = 143.70' L.C. = 139.41' Def./Ft. = 10.17073 Min.

Station	Arc	Chord Lengths		
		6' Left	Defl.	Total Defl.
5+28.03	-	-	0'00"00"	0'00"00"
5+50.00	21.97'	22.73'	3'43"27"	3'43"27"
5+75.00	25.00'	25.86'	4'14"16"	7'57'43"
6+00.00	25.00'	25.86'	4'14"16"	12'11'59"
6+25.00	25.00'	25.86'	4'14"16"	16'26'15"
6+50.00	25.00'	25.86'	4'14"16"	20'40'31"
6+71.73	21.73'	22.49'	3'41'01"	24'21'32"

Scale: 1" = 40' Horizontal
 1" = 5' Vertical
 • = Iron

Curve #3
 Curve Data Based on Centerline
 Rad. = 176' Delta = 67°44'14" Tangent = 118.13'
 Arc = 208.07' L.C. = 196.17' Def./Ft. = 9.76650 Min.

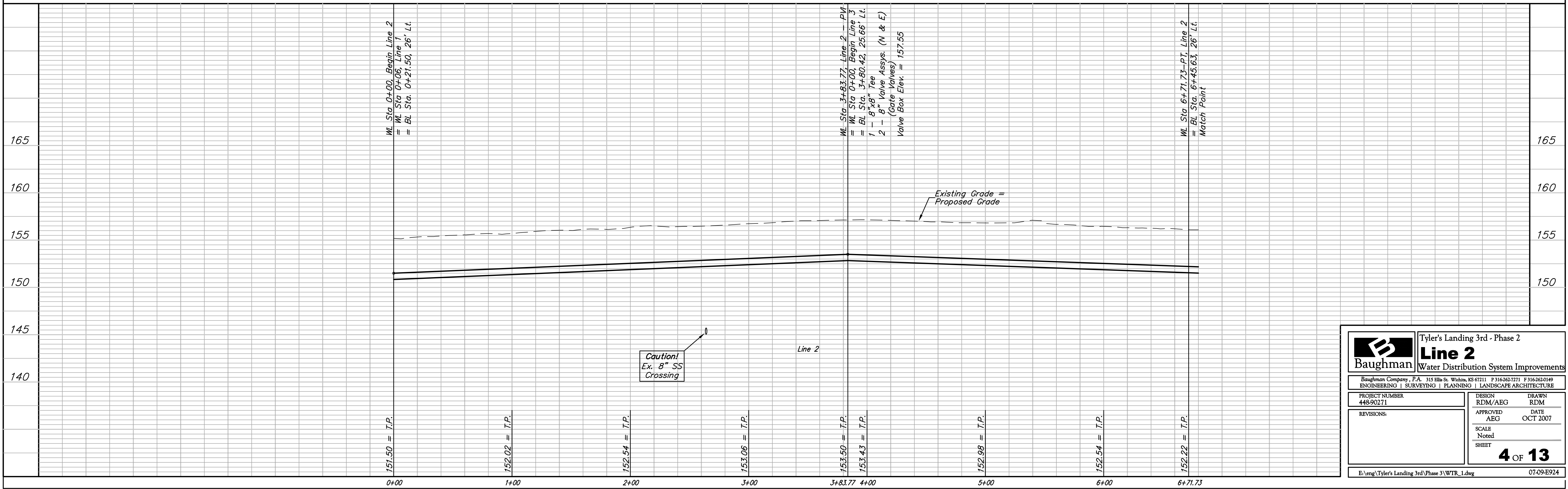
Station	Arc	Chord Lengths		
		6' Left	Defl.	Total Defl.
0+00.00	-	-	0'00"00"	0'00"00"
0+25.00	25.00'	25.83'	4'04"10"	4'04"10"
0+50.00	25.00'	25.83'	4'04"10"	8'08'20"
0+75.00	25.00'	25.83'	4'04"09"	12'12'29"
1+00.00	25.00'	25.83'	4'04"10"	16'16'39"
1+25.00	25.00'	25.83'	4'04"10"	20'20'49"
1+50.00	25.00'	25.83'	4'04"10"	24'24'59"
1+75.00	25.00'	25.83'	4'04"09"	28'29'08"
2+00.00	25.00'	25.83'	4'04"10"	32'33'18"
2+08.07	8.07'	8.34'	1'18'49"	33'52'07"



WL Sta 0+00, Begin Line 2
 = WL Sta 0+06, Line 1
 = BL Sta. 0+21.50, 26' Lt.

For radii under 200',
 contractor shall use
 short pipe lengths.

BL HIGH POINT



Caution!
 Ex. 8" SS
 Crossing

Baughman Tyler's Landing 3rd - Phase 2
Line 2
 Water Distribution System Improvements

Baughman Company, P.A. 315 Ellis St. Wichita, KS 67211 P 316-262-7271 F 316-262-0149
 ENGINEERING | SURVEYING | PLANNING | LANDSCAPE ARCHITECTURE

PROJECT NUMBER: 448-90271
 DESIGN: RDM/AEG
 DRAWN: RDM
 APPROVED: AEG
 DATE: OCT 2007

REVISIONS:

SCALE: Noted
 SHEET: 4 OF 13

E:\eng\Tyler's Landing 3rd\Phase 3\WTR_1.dwg 07-09-E924