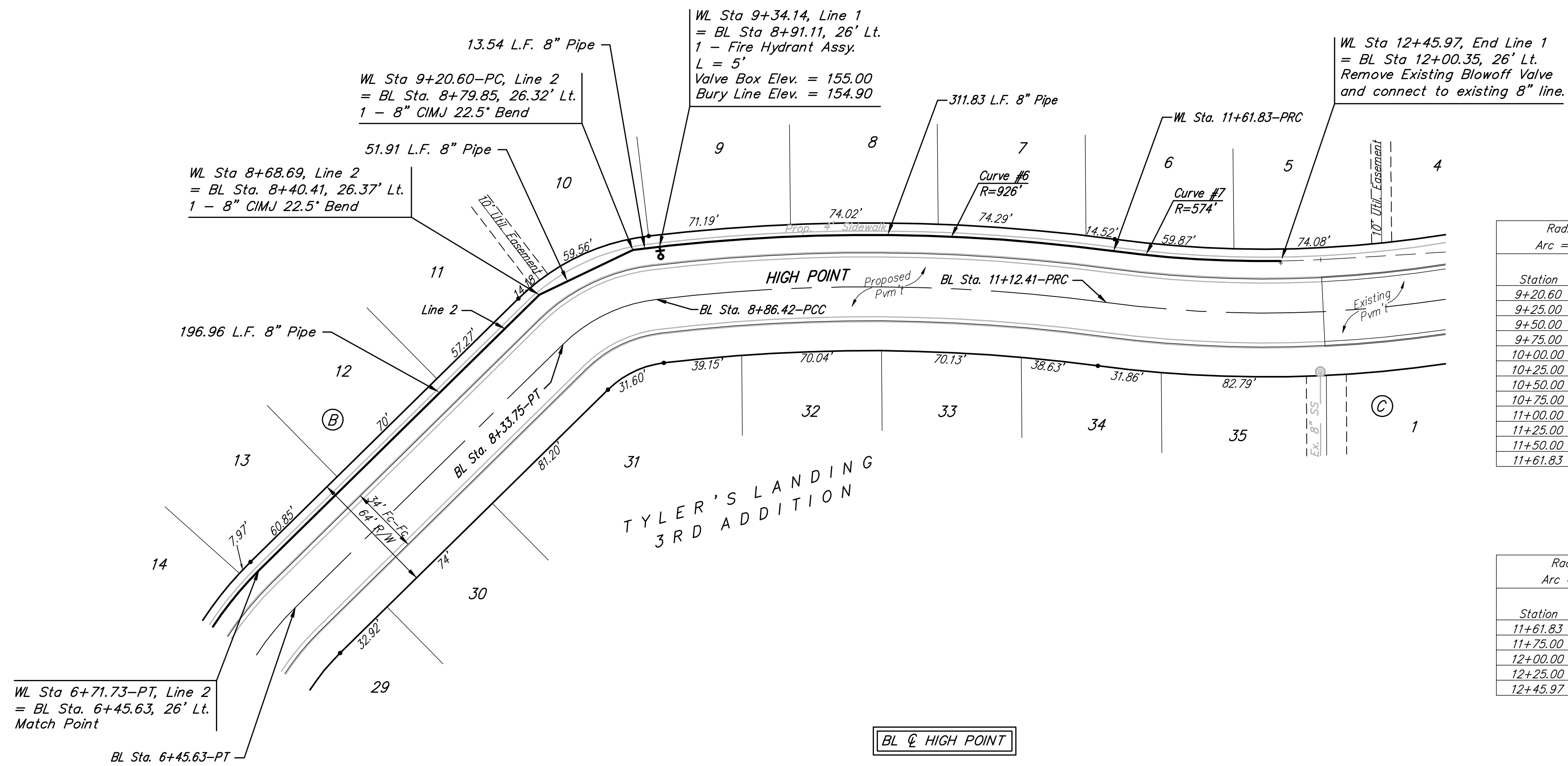


BENCHMARK:
 BM #1: "□" Cut in Middle of Curb Inlet Top, North Curb of Conrey, Adjacent to SW Corner of Lot 14, Block A, Tyler's Landing 3rd Addition.
 Elev. = 150.29 (1337.69 M.S.L.)

BM #2: "□" Cut in Top of East Curb of High Point, 10' South of End of Return, Adjacent to Lot 1, Block D, Tyler's Landing Addition.
 Elev. = 155.28 (1342.68 M.S.L.)



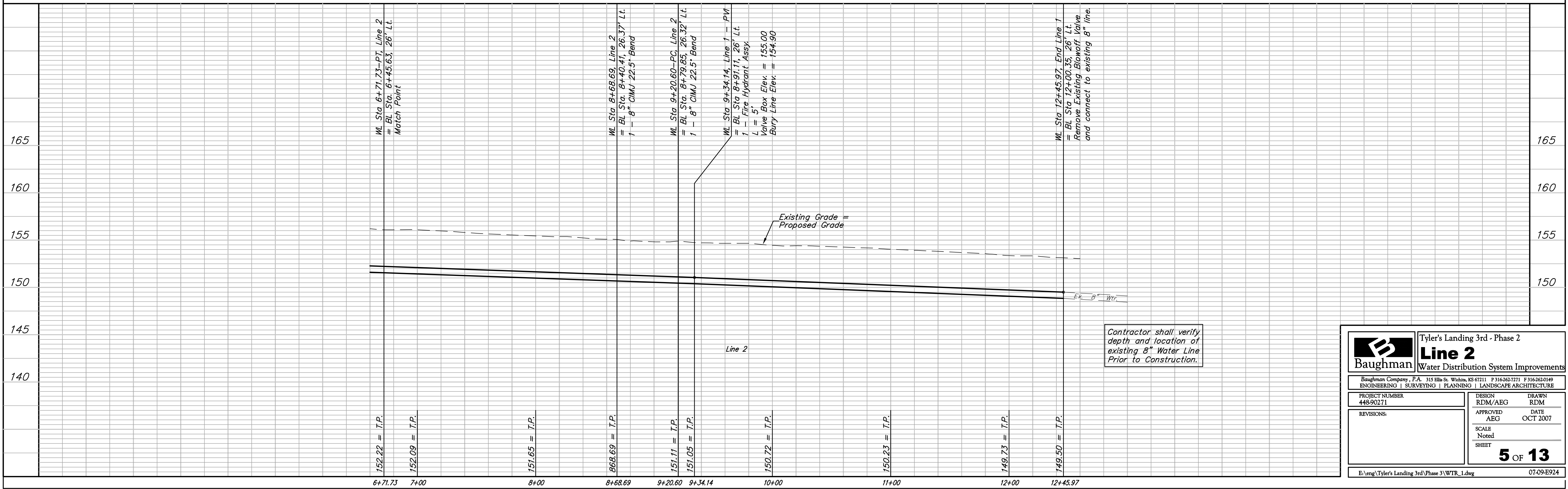
Curve #6
 Curve Data Based on Centerline
 Rad. = 926' Delta = 14°55'35" Tangent = 121.31'
 Arc = 241.23' L.C. = 240.55' Def./Ft. = 1.85629 Min.

Station	Arc	Chord Lengths		
		6' Left	Defl.	Total Defl.
9+20.60	-	-	0'00'00"	0'00'00"
9+25.00	4.40'	4.43'	0'08'10"	0'08'10"
9+50.00	25.00'	25.16'	0'46'24"	0'54'34"
9+75.00	25.00'	25.16'	0'46'25"	1'40'59"
10+00.00	25.00'	25.16'	0'46'24"	2'27'23"
10+25.00	25.00'	25.16'	0'46'25"	3'13'48"
10+50.00	25.00'	25.16'	0'46'24"	4'00'12"
10+75.00	25.00'	25.16'	0'46'25"	4'46'37"
11+00.00	25.00'	25.16'	0'46'24"	5'33'01"
11+25.00	25.00'	25.16'	0'46'24"	6'19'25"
11+50.00	25.00'	25.16'	0'46'25"	7'05'50"
11+61.83	11.83'	11.91'	0'21'58"	7'27'48"

Curve #7
 Curve Data Based on Centerline
 Rad. = 574' Delta = 8°23'53" Tangent = 42.14'
 Arc = 84.14' L.C. = 84.06' Def./Ft. = 2.99432 Min.

Station	Arc	Chord Lengths		
		6' Left	Defl.	Total Defl.
11+61.83	-	-	0'00'00"	0'00'00"
11+75.00	13.17'	13.03'	0'39'26"	0'39'26"
12+00.00	25.00'	24.73'	1'14'52"	1'54'18"
12+25.00	25.00'	24.73'	1'14'51"	3'09'09"
12+45.97	20.97'	20.75'	1'02'47"	4'11'56"

Scale: 1" = 40' Horizontal
 1" = 5' Vertical
 • = Iron



Baughman Tyler's Landing 3rd - Phase 2
Line 2
 Water Distribution System Improvements

Baughman Company, P.A. 315 Ellis St. Wichita, KS 67211 P 316-262-7271 F 316-262-0149
 ENGINEERING | SURVEYING | PLANNING | LANDSCAPE ARCHITECTURE

PROJECT NUMBER 448-90271	DESIGN RDM/AEG	DRAWN RDM
APPROVED AEG	DATE OCT 2007	
REVISIONS:	SCALE Noted	SHEET 5 OF 13

E:\eng\Tyler's Landing 3rd\Phase 3\WTR_1.dwg 07-09-E924