

# GENERAL NOTES

1. Contractor will be required to provide a minimum advance notice of seventy-two (72) hours to utility companies prior to starting any excavation as follows:

Kansas One—Call 687-2470

2. The Contractor must notify the following in case of an emergency:

Cox Communications 262-0661  
 Kansas Gas Service 383-8600  
 Westar Energy 383-8600  
 Aquila Energy 1-800-303-0357  
 AT&T 1-800-286-8313  
 City of Wichita Water Department 262-6000  
 City of Wichita Sewer Maintenance 262-6000

3. A saw cut of at least one-half the depth of existing surface courses or one-fourth the depth of existing total pavement thickness shall be provided at locations where proposed construction abuts an existing surface course or pavement for which partial removal of that surface or pavement is required, except when such saw cuts are within three (3) feet of an existing joint the limits of removal shall be extended to the existing joint. Such saw cuts will not be paid for directly and this cost shall be considered as subsidiary to the removal of the surface or pavement.

4. Rubble from the removal of miscellaneous structures shall be disposed of on sites to be provided by the Contractor. Excess excavation from this project shall be placed at the east end of Valencia Addition. The sites shall be approved by the Engineer as to suitability, appearance and site location. Locations that, in the opinion of the Engineer, will leave an unsightly appearance will not be approved.

5. All disposal sites must be approved by the Kansas Department of Health and Environment. Material either stockpiled or disposed of in a flood plain would require a Kansas State Board of Agriculture permit. Any material permitting regulations. Any material buried or stockpiled beyond approved dumped in waters of the United States or wetlands is subject to U.S. Corps of Engineers construction limits would require additional archeological investigations unless buried in a previously approved borrow location.

6. Limits of earthwork shall match existing ground elevations at the right-of-way line unless otherwise noted on the plans with a new finished grade elevation. When a new finished grade elevation is shown, the earthwork shall extend one foot beyond the right-of-way line and then sloped up or down using permissible slopes to match the existing ground surface.

7. The Contractor shall be responsible for preserving property irons. The Contractor will be required to re-establish any property irons which are damaged or destroyed by his construction operations. Such irons shall be re-established by a licensed land surveyor in accordance with state laws.

8. The Contractor shall give all property owners and/or tenants of developed property directly abutting the construction of this project a minimum of ten (10) days advance notice prior to start of construction.

9. Underground utility service lines and overhead utility pole lines are to be adjusted as necessary by others prior to construction unless the plans specifically call for their adjustment by the Contractor or unless the plans specifically identify a utility to be adjusted by its owner during construction. Existing utilities and their location, as shown on the plans, represent the best information obtainable for design. Location information has been obtained from the various utility companies and is either from company record drawings or company-provided field locations. The Contractor will be required to work around existing utilities within the right-of-way which do not conflict with proposed construction.

10. Trees and shrubs in public right-of-way which are in direct conflict with proposed new construction shall be removed by the Contractor with the Engineer's approval. Trees and shrubs which are not in direct conflict with proposed new construction shall be saved and protected from damage.

11. The Contractor shall seed, fertilize and install approved erosion mat in all disturbed areas per City specifications upon completion of construction. Install temporary seed and erosion mat on south side of 51st Street and permanent seed and mat on north side of 51st Street.

12. Properties within the project limits may have underground sprinkler systems in public right-of-way which conflict with new construction. Contractor will be required to remove such improvements should they not be removed by their owner at the time of construction of the project. The Contractor will be required to salvage all sprinkler heads and/or valves and give such material to their owner. Portions of underground sprinkler systems not in conflict with new construction shall be protected from damage and shall remain in place. All work in connection with underground sprinkler systems shall be considered as subsidiary to the contract pay items for work.

13. Mailboxes within the limits of the project shall be removed and replaced by the Contractor as approved by the Engineer. Contractor will be required to make satisfactory provisions for mail delivery to properties affected by this project during its construction.

14. All entrance and cross road pipes within the project limits shall be removed by the Contractor unless otherwise noted on the plans. Removal of such pipes shall conform to the applicable section of the Standard Specifications.

15. The Contractor shall adjust Water Valve Boxes and Fire Hydrants as directed by the Engineer at the price bid for said adjustments. The Water Department shall field locate water valves one time during construction when requested by the Contractor. It shall be the Contractor's responsibility to preserve such field locations during the construction process. Water valves, water valve boxes or fire hydrants damaged during construction shall be repaired by the Contractor at his own expense.

16. The Contractor shall provide access to driveways throughout construction of this project.

# PAVING IMPROVEMENTS

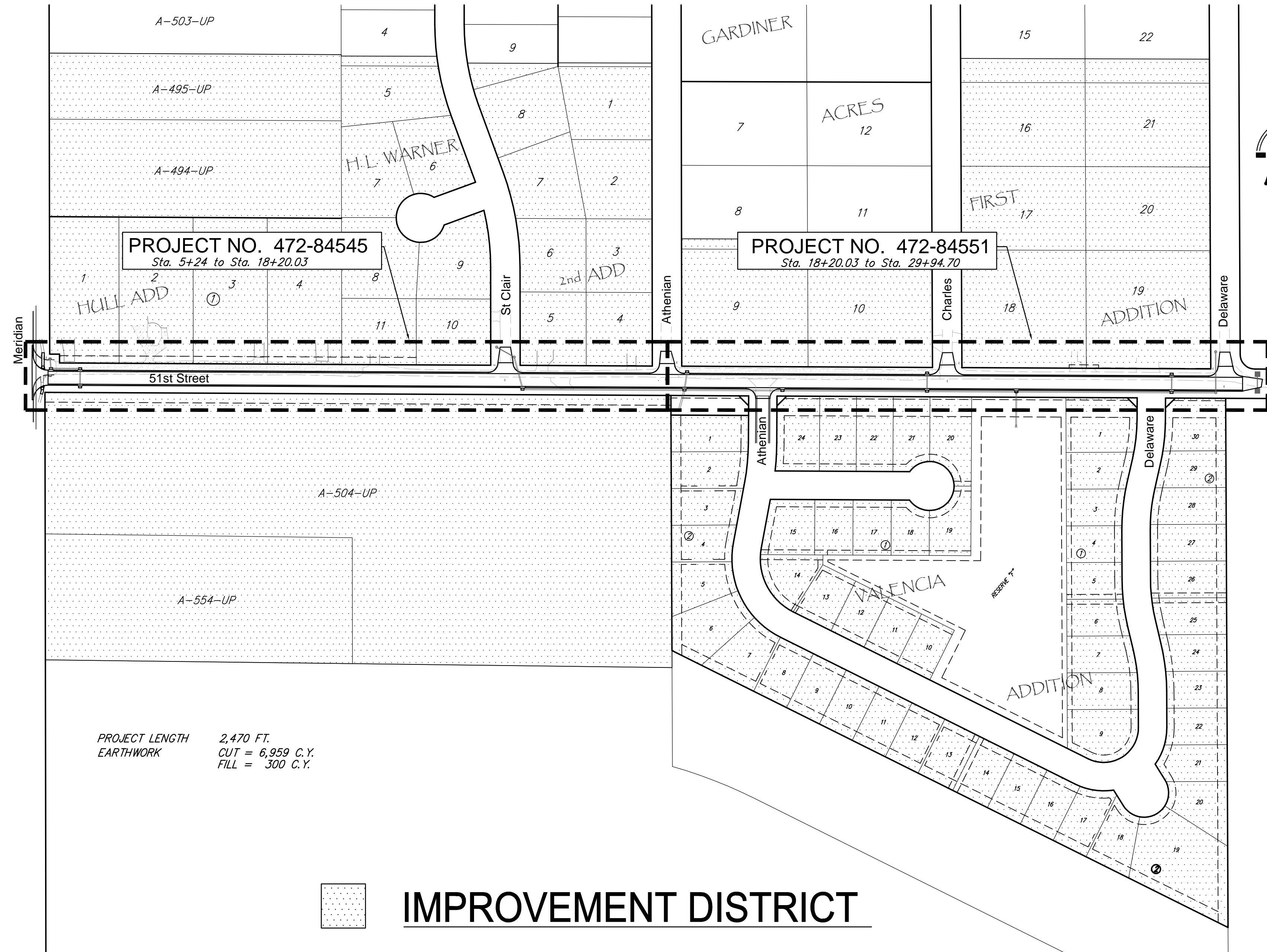
## 51st Street North, E.L. Meridian to CL Athenian

PROJECT NO. 472-84545  
 OCA NO. 766149

# PAVING IMPROVEMENTS

## 51st Street North, CL Athenian to E.L. Delaware

PROJECT NO. 472-84551  
 OCA NO. 766150



PROJECT LENGTH 2,470 FT.  
 EARTHWORK CUT = 6,959 C.Y.  
 FILL = 300 C.Y.

### IMPROVEMENT DISTRICT

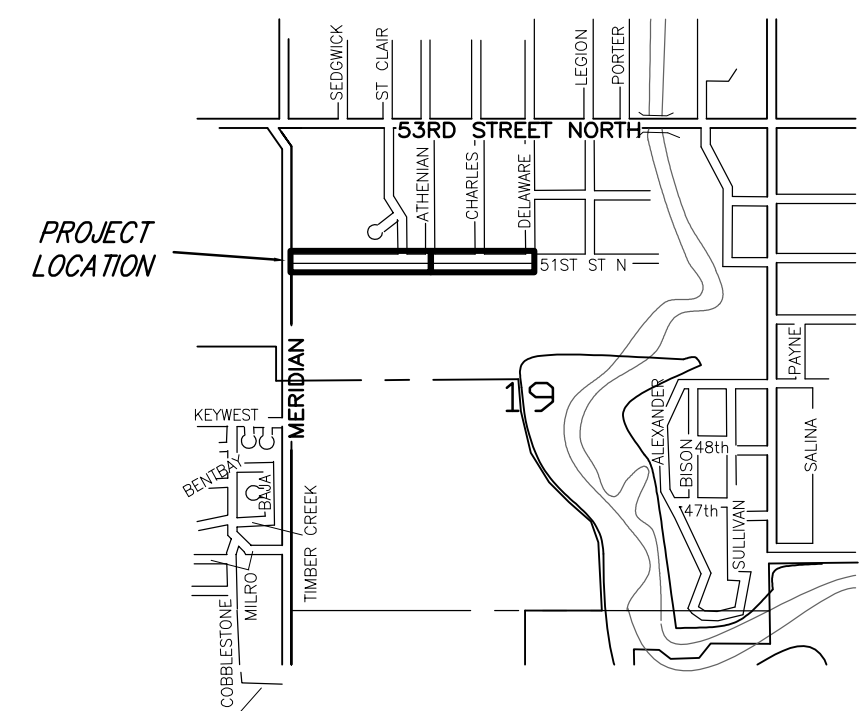
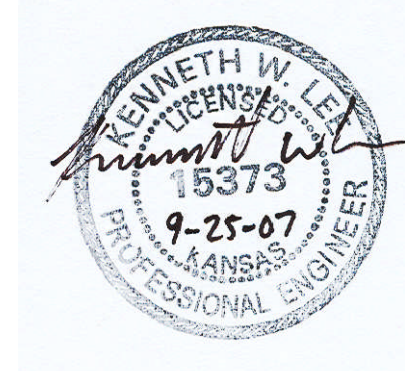
### BENCH MARKS

BENCH MARK#1 CITY OF WICHITA DISK 59.00' W. AND 32.30' N. OF THE CENTER LINES OF MERIDIAN AND KEYWEST ELEVATION = 1329.36 M.S.L.

BENCH MARK#2 CHISELED CROSS ON NORTH RIM OF A SANITARY SEWER MANHOLE 7.6' S. AND 12.4' E. OF THE N.W. CORNER OF RESERVE "E", VALENCIA, WICHITA, SEDGWICK COUNTY, KANSAS. ELEVATION = 1330.49 M.S.L.

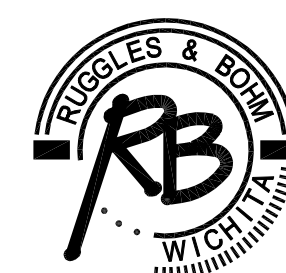
### INDEX

1. TITLE SHEET
2. TYPICAL 31" PVMT. SECTION
3. INTERSECTION & VALLEY GUTTER DETAILS
- 4-8. 51st Street Plans
- 9-13. INCIDENTAL DRAINAGE -STORM SEWER
14. TYPE 1A INLET DETAILS
15. SHALLOW MANHOLE DETAILS W/ BEEHIVE FRAME & GRATE
16. TYPE "P" MANHOLE DETAILS
- 17-21. EROSION CONTROL DETAILS
22. EROSION CONTROL PLAN
23. TRAFFIC CONTROL DETAIL
- 24-30. PAVEMENT CROSS SECTIONS
31. KEYMAP



VICINITY MAP

CITY OF WICHITA, KANSAS JAMES ARMOUR, P.E. - CITY ENGINEER



**Ruggles & Bohm, P.A.**  
 Engineering, Surveying, Land Planning  
 924 North Main (316) 264-8008  
 Wichita, Kansas 67203 (316) 264-4621 fax  
 www.rbkansas.com E-mail: info@rbkansas.com