

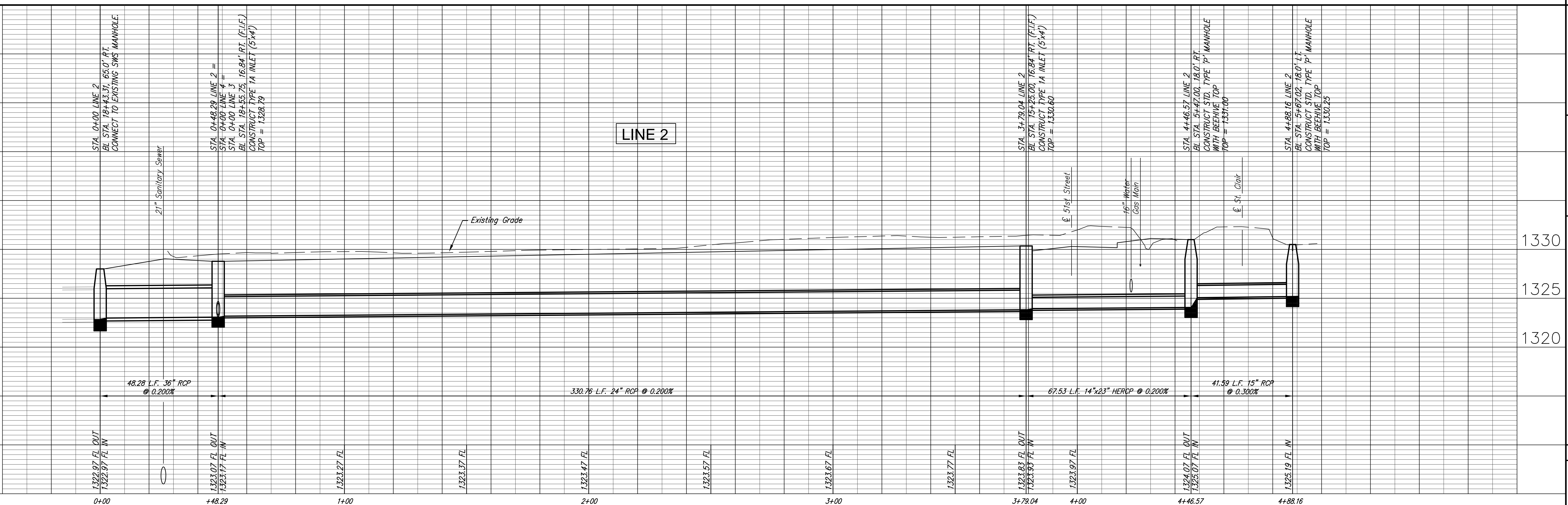
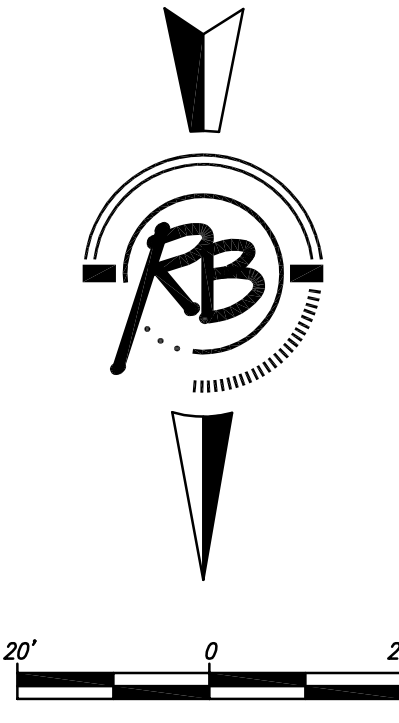
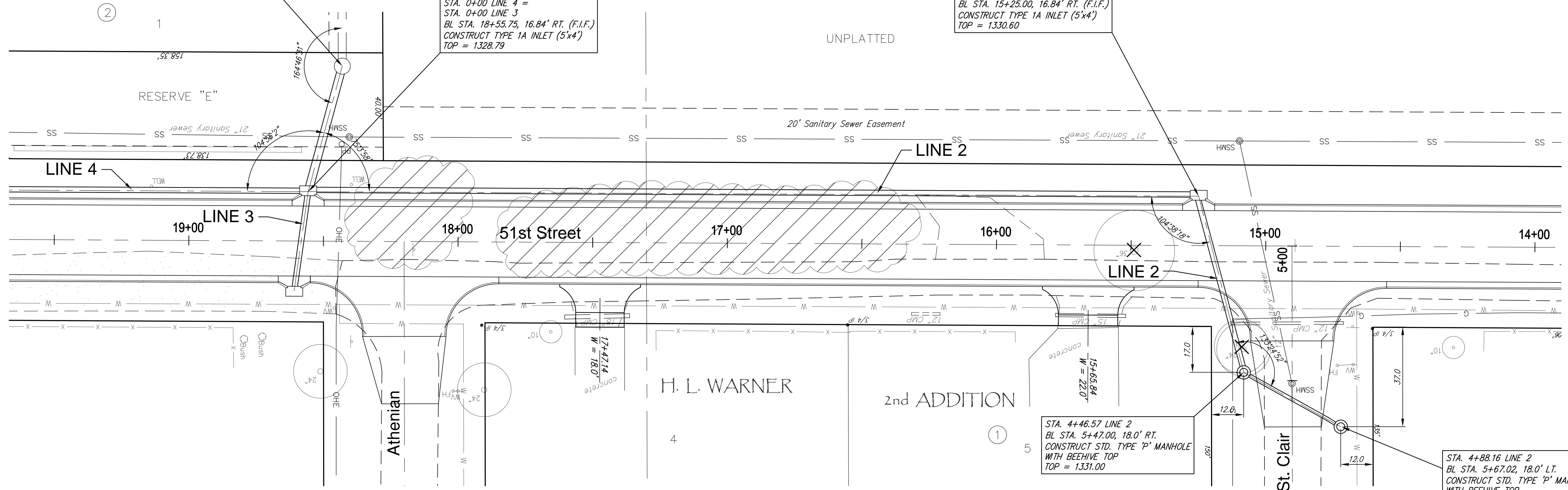
STA. 0+00 LINE 2
BL STA. 18+43.31, 65.0' RT.
CONNECT TO EXISTING SWS MANHOLE.

STA. 0+48.29 LINE 2 =
STA. 0+00 LINE 4 =
STA. 0+00 LINE 3
BL STA. 18+55.75, 16.84' RT. (F.I.F.)
CONSTRUCT TYPE 1A INLET (5'x4')
TOP = 1328.79

STA. 3+79.04 LINE 2
BL STA. 15+25.00, 16.84' RT. (F.I.F.)
CONSTRUCT TYPE 1A INLET (5'x4')
TOP = 1330.60

STA. 4+46.57 LINE 2
BL STA. 5+47.00, 18.0' RT.
CONSTRUCT STD. TYPE 'P' MANHOLE
WITH BEEHIVE TOP
TOP = 1331.00

STA. 4+88.16 LINE 2
BL STA. 5+67.02, 18.0' LT.
CONSTRUCT STD. TYPE 'P' MANHOLE
WITH BEEHIVE TOP
TOP = 1330.25



| | | | |
|---|-------------------------|---|--------------------|
| | | Ruggles & Bohm, P.A. Engineering, Surveying, Land Planning 1000 N. 17th St., Suite 100 Wichita, Kansas 67203 Phone: 620-842-8000 Email: info@rbinc.com | |
| PROJECT NUMBER 472-84550 472-84551 | DESIGN KWL | DRAWN RA | REVISION REVIEW |
| DRAWING FILE sws {LINE 1} | UTILITY | DATE Sept. 18, 2007 | REVIEW |
| 51st STREET PAVING IMPROVEMENTS Line 2 | | WICHITA KANSAS | |
| RB JOB 3062E | SHEET 10 OF 31 | | |