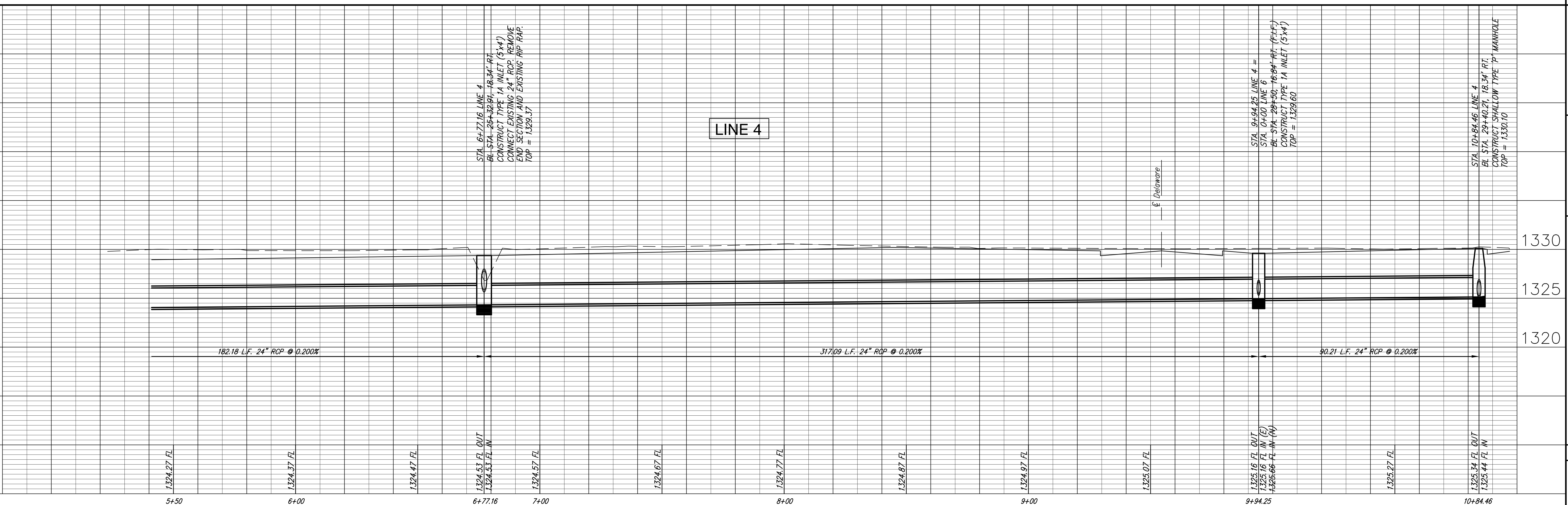


STA. 6+77.16 LINE 4
 BL STA. 25+32.91, 18.34' RT.
 CONSTRUCT TYPE 1A INLET (5'x4')
 CONNECT EXISTING 24" RCP. REMOVE
 END SECTION AND EXISTING RIP RAP.
 TOP = 1329.37

STA. 9+94.25 LINE 4 =
 STA. 0+00 LINE 6
 BL STA. 28+50, 16.84' RT. (F.I.F.)
 CONSTRUCT TYPE 1A INLET (5'x4')
 TOP = 1329.60

STA. 10+84.46 LINE 4
 BL STA. 29+40.21, 18.34' RT.
 CONSTRUCT SHALLOW TYPE 'P' MANHOLE
 TOP = 1330.10



STA. 6+77.16 LINE 4
 BL STA. 25+32.91, 18.34' RT.
 CONSTRUCT TYPE 1A INLET (5'x4')
 CONNECT EXISTING 24" RCP. REMOVE
 END SECTION AND EXISTING RIP RAP.
 TOP = 1329.37

STA. 9+94.25 LINE 4 =
 STA. 0+00 LINE 6
 BL STA. 28+50, 16.84' RT. (F.I.F.)
 CONSTRUCT TYPE 1A INLET (5'x4')
 TOP = 1329.60

STA. 10+84.46 LINE 4
 BL STA. 29+40.21, 18.34' RT.
 CONSTRUCT SHALLOW TYPE 'P' MANHOLE
 TOP = 1330.10

Ruggles & Bohm, P.A.
 Engineering, Surveying, Land Planning
 1000 W. 17th St., Suite 100
 Wichita, Kansas 67203
 www.rugglesandbohm.com
 Email: info@rugglesandbohm.com



REVISION	DATE	REVIEW

DESIGN	DATE	REVIEW
KWL		

PROJECT NUMBER	DATE	REVIEW
472-84550		
472-84551		

51st STREET PAVING IMPROVEMENTS
 Line 4
 WICHITA KANSAS