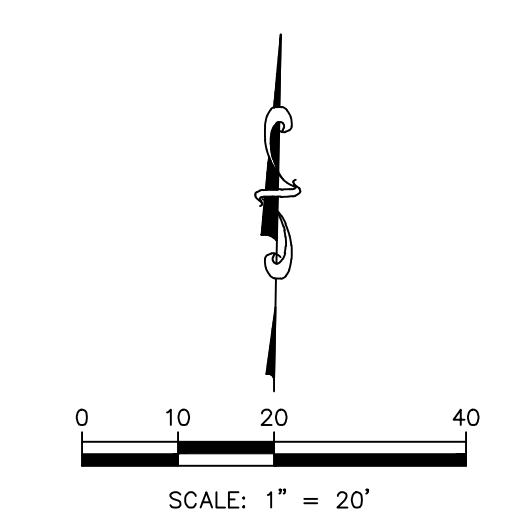


THE COORDINATES PROVIDED IN THESE PLANS ARE FOR INFORMATION AND CHECKING PURPOSES ONLY. IT IS THE CONTRACTOR'S RESPONSIBILITY TO CALCULATE CONSTRUCTION STAKING COORDINATES ACCORDING TO THE DIMENSIONS SHOWN ON THESE PLANS. CONTRACTOR SHALL VERIFY THE ACCURACY OF THE COORDINATES SHOWN IN THE TABLE HEREON BEFORE CONSTRUCTION.



NOTE:  
ALL DIRECTIONAL DRILLED LINES TO BE RESTRAINED.

Tap Location: From Centerline S. Ridge and W. Mariposa Lane: 395 ft South & 15 ft East to 8" Tap Fire Line.

STA 305+52.34, END WATER LINE A  
CONNECT TO EXISTING 12" WATER MAIN  
INSTALL 1 - 12"x8" TAPPING SLEEVE & VALVE,  
TAP TO BE INSTALLED BY CITY OF WICHITA  
CONTRACTOR TO REIMBURSE CITY FOR TAP FEES  
TOP OF VALVE BOX ELEV=1318.79  
SEE DETAIL SHEETS  
N 1678239.51  
E 1623303.21

CAUTION!!!  
EXISTING OVERHEAD UTILITY LINE

CAUTION!!!  
EXISTING UTILITY LINES

SEE CIVIL CONSTRUCTION DOCUMENTS FOR DEVELOPMENT PLANS

PROPOSED HOTEL  
49,028 SF±

Built As Per Plans; Location: From Datum: Centerline S. Ridge and W. Mariposa Lane 263 ft South/328.5ft West towards to Sta. 300+59.87 90° Bend Left

Built As Per Plans; Location: From Datum: Centerline S. Ridge and W. Mariposa Lane 258 ft South/270.5ft West to Sta. 300+00 90° Bend up to 8" DICL Riser

Fire Hydrant Location:  
From Centerline S. Ridge and W. Mariposa Lane:  
330 ft South & 328.5 ft West to 8" Tee,  
330 ft. S. & 327.5 ft. W to valve, and  
330 ft. S. & 322.5 ft. W to Fire Hydrant

Fire Service Vault Location: From Centerline S. Ridge and W. Mariposa Lane:  
395ft South & 100ft West to center of 8" Fire Service Vault.

Location: From Centerline S. Ridge and W. Mariposa Lane 395ft South/45ft West to 304+86.53 8" Valve (FC. W), 393ft South/42ft West towards to Sta. 304+86.53 8" Valve (FC. N).

NOTE:  
Water Line Fire 8"  
Badger Meter # 220953663,  
Reading 000076.83 CF  
ERT # 77310317

NOTE:  
Datum: Center of intersection, S. Ridge, and W. Mariposa

THIS PLAN SHEET IS PART OF AN OVERALL KAW VALLEY ENGINEERING PLAN SET FOR THE SPECIFIC IMPROVEMENTS CONTEMPLATED THEREIN. AS SUCH, THE INFORMATION REFLECTED HEREIN SHOULD ONLY BE INTERPRETED WITHIN THE CONTEXT OF THE COMPLETE PLAN SET.

Built As Per Plans; Location: From Datum: Centerline S. Ridge and W. Mariposa Lane 395ft South/328.5ft West towards to Sta. 301+95.78 8" 90 Degree Bend Left

PROJ. NO.	G22 2268
DESIGNER	SRB
DRAWN BY	KS
CFN	2268WPP
SHEET	2
REV	0
DATE	08/22/23
INITIAL	JML
ISSUE	CS
DESCRIPTION	DSN DWN CHK

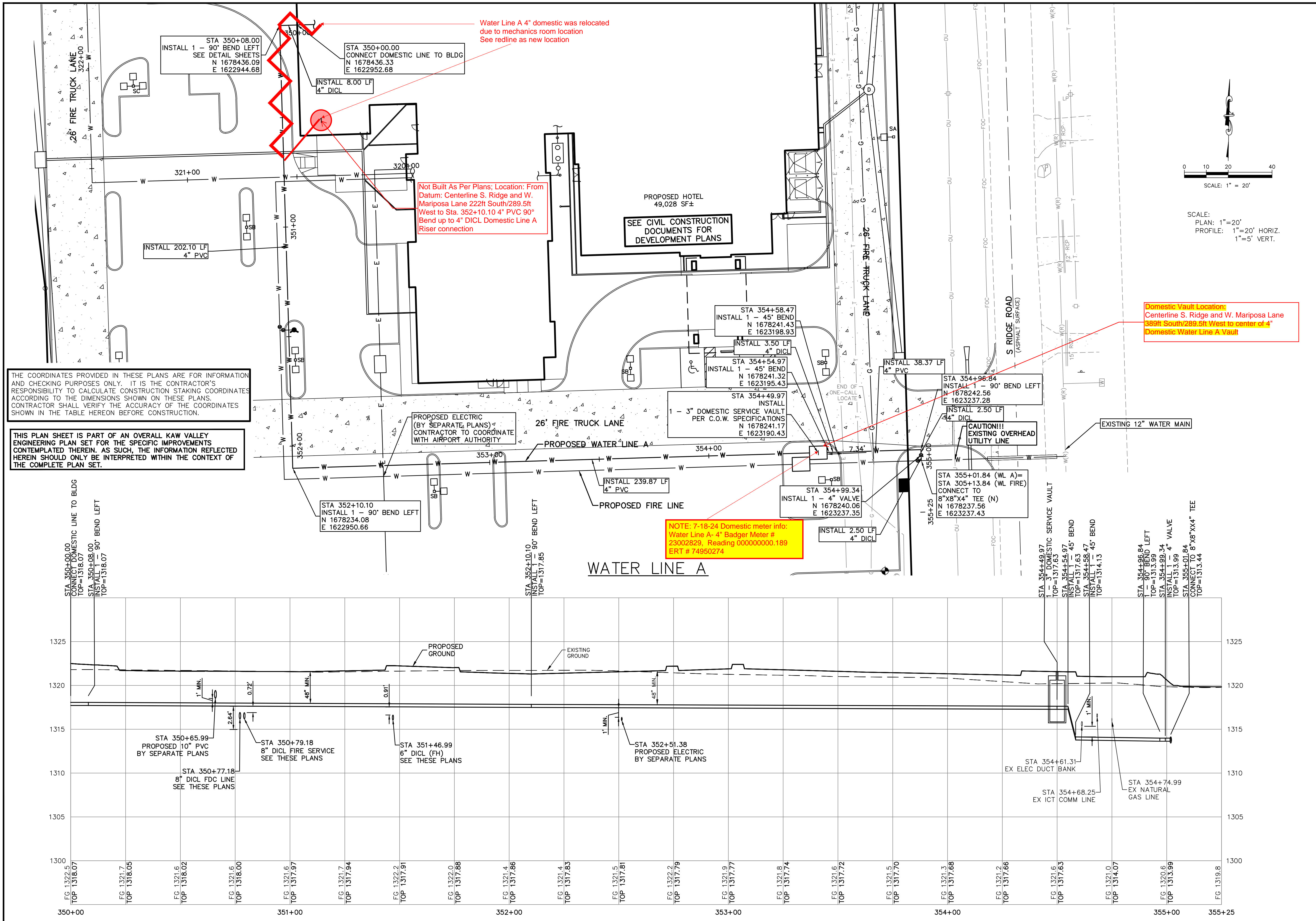


LEON D. OSBOURN  
ENGINEER  
KS # 9772

200 N. EMPORIA, SUITE 100  
WICHITA, KANSAS 67202  
PH. (316) 440-4304  
www.kaveg.com | www.kveg.com  
KAW VALLEY ENGINEERING  
KAW VALLEY ENGINEERING, INC., IS AUTHORIZED TO OFFER ENGINEERING SERVICES BY KANSAS STATE CERTIFICATE OF AUTHORIZATION # E-113.  
EXPIRES 12/31/24

AIRPORT HOTEL  
HARRY ST & RIDGE RD  
WICHITA, KANSAS

WATER LINE IMPROVEMENTS  
WATER LINE - FIRE - PLAN & PROFILE



STA 350+08.00  
INSTALL 1 - 90° BEND LEFT  
SEE DETAIL SHEETS  
N 1678436.09  
E 1622944.68

STA 350+00.00  
CONNECT DOMESTIC LINE TO BLDG  
N 1678436.33  
E 1622952.68

INSTALL 8.00 LF  
4" DICL

Water Line A 4" domestic was relocated  
due to mechanics room location  
See redline as new location

Not Built As Per Plans: Location: From  
Datum: Centerline S. Ridge and W.  
Mariposa Lane 222ft South/289.5ft  
West to Sta. 352+10.10 4" PVC 90°  
Bend up to 4" DICL Domestic Line A  
Riser connection

PROPOSED HOTEL  
49,028 SF±

SEE CIVIL CONSTRUCTION  
DOCUMENTS FOR  
DEVELOPMENT PLANS

STA 354+58.47  
INSTALL 1 - 45° BEND  
N 1678241.43  
E 1623198.93

INSTALL 3.50 LF  
4" DICL

STA 354+54.97  
INSTALL 1 - 45° BEND  
N 1678241.32  
E 1623195.43

STA 354+49.97  
INSTALL  
1 - 3" DOMESTIC SERVICE VAULT  
PER C.O.W. SPECIFICATIONS  
N 1678241.17  
E 1623190.43

INSTALL 38.37 LF  
4" PVC

STA 354+98.84  
INSTALL 1 - 90° BEND LEFT  
N 1678242.56  
E 1623237.28

INSTALL 2.50 LF  
4" DICL

CAUTION!!!  
EXISTING OVERHEAD  
UTILITY LINE

EXISTING 12" WATER MAIN

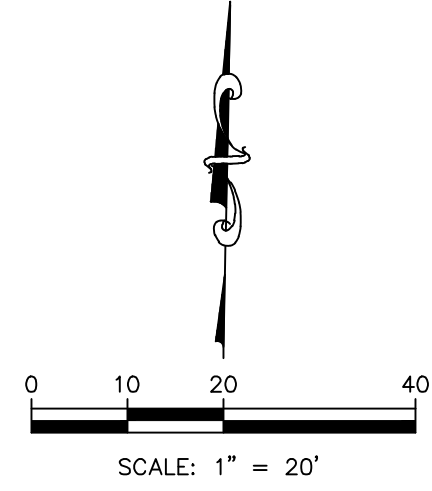
STA 355+01.84 (WL A)=  
STA 305+13.84 (WL FIRE)  
CONNECT TO  
8"x8"x4" TEE (N)  
N 1678237.56  
E 1623237.43

STA 354+99.34  
INSTALL 1 - 4" VALVE  
N 1678240.06  
E 1623237.35

INSTALL 2.50 LF  
4" DICL

NOTE: 7-18-24 Domestic meter info:  
Water Line A- 4" Badger Meter #  
23002829, Reading 000000000.189  
ERT # 74950274

Domestic Vault Location:  
Centerline S. Ridge and W. Mariposa Lane  
389ft South/289.5ft West to center of 4"  
Domestic Water Line A Vault



THE COORDINATES PROVIDED IN THESE PLANS ARE FOR INFORMATION  
AND CHECKING PURPOSES ONLY. IT IS THE CONTRACTOR'S  
RESPONSIBILITY TO CALCULATE CONSTRUCTION STAKING COORDINATES  
ACCORDING TO THE DIMENSIONS SHOWN ON THESE PLANS.  
CONTRACTOR SHALL VERIFY THE ACCURACY OF THE COORDINATES  
SHOWN IN THE TABLE HEREON BEFORE CONSTRUCTION.

THIS PLAN SHEET IS PART OF AN OVERALL KAW VALLEY  
ENGINEERING PLAN SET FOR THE SPECIFIC IMPROVEMENTS  
CONTEMPLATED THEREIN. AS SUCH, THE INFORMATION REFLECTED  
HEREIN SHOULD ONLY BE INTERPRETED WITHIN THE CONTEXT OF  
THE COMPLETE PLAN SET.

PROPOSED ELECTRIC  
(BY SEPARATE PLANS)  
CONTRACTOR TO COORDINATE  
WITH AIRPORT AUTHORITY

26' FIRE TRUCK LANE

PROPOSED WATER LINE A

PROPOSED FIRE LINE

WATER LINE A

STA 350+00.00  
CONNECT DOMESTIC LINE TO BLDG  
TOP=1318.07

STA 350+08.00  
INSTALL 1 - 90° BEND LEFT  
TOP=1318.07

STA 352+10.10  
INSTALL 1 - 90° BEND LEFT  
N 1678234.08  
E 1622950.66

STA 352+10.10  
INSTALL 1 - 90° BEND LEFT  
TOP=1317.85

INSTALL 239.87 LF  
4" PVC

INSTALL 1 - 4" VALVE  
N 1678240.06  
E 1623237.35

STA 354+49.97  
1 - 3" DOMESTIC SERVICE VAULT  
TOP=1317.63

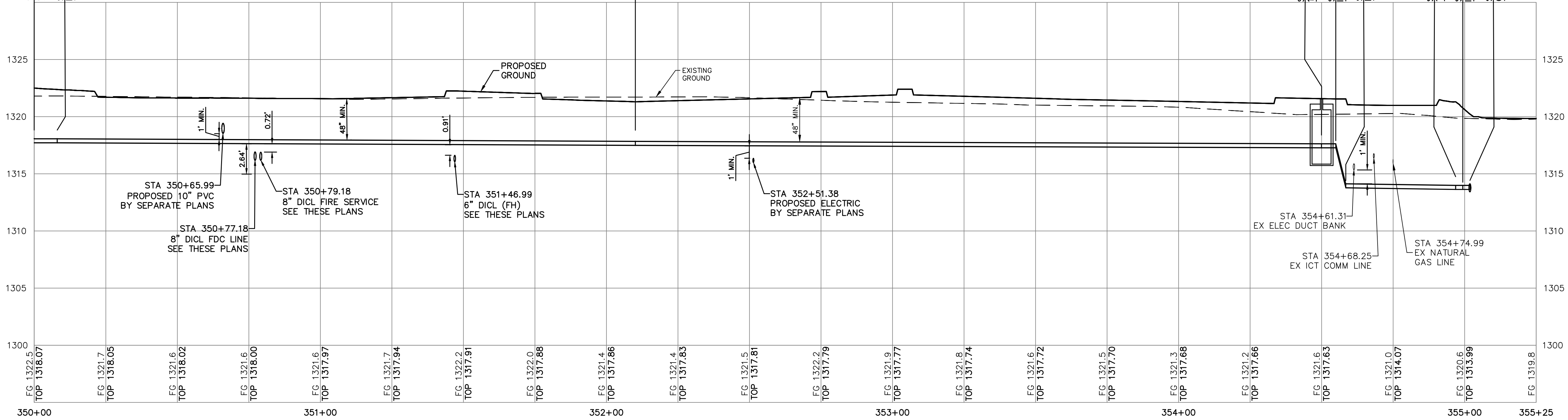
STA 354+54.97  
INSTALL 1 - 45° BEND  
TOP=1317.63

STA 354+58.47  
INSTALL 1 - 45° BEND  
TOP=1314.13

STA 354+98.84  
1 - 90° BEND LEFT  
TOP=1313.99

STA 354+99.34  
INSTALL 1 - 4" VALVE  
TOP=1313.99

STA 355+01.84  
CONNECT TO 8"x8"x4" TEE  
TOP=1313.44



PROJ. NO.	G22-2268
DESIGNER	SRB
DRAWN BY	KS
CFN	2268WPP
SHEET	3
REV	0
REV DATE	08/22/23
INITIAL ISSUE	DSN
DESCRIPTION	DWN
CHK	JML



LEON D. OSBOURN  
ENGINEER  
KS # 9772

**KAW VALLEY ENGINEERING**  
200 N. EMPORIA, SUITE 100  
WICHITA, KANSAS 67202  
PH. (316) 440-4304  
www.kveing.com | www.kveing.com  
KAW VALLEY ENGINEERING, INC. IS AUTHORIZED TO OFFER ENGINEERING  
SERVICES BY KANSAS STATE CERTIFICATE OF AUTHORIZATION # E-113.  
EXPIRES 12/31/24

**AIRPORT HOTEL**  
HARRY ST & RIDGE RD  
WICHITA, KANSAS

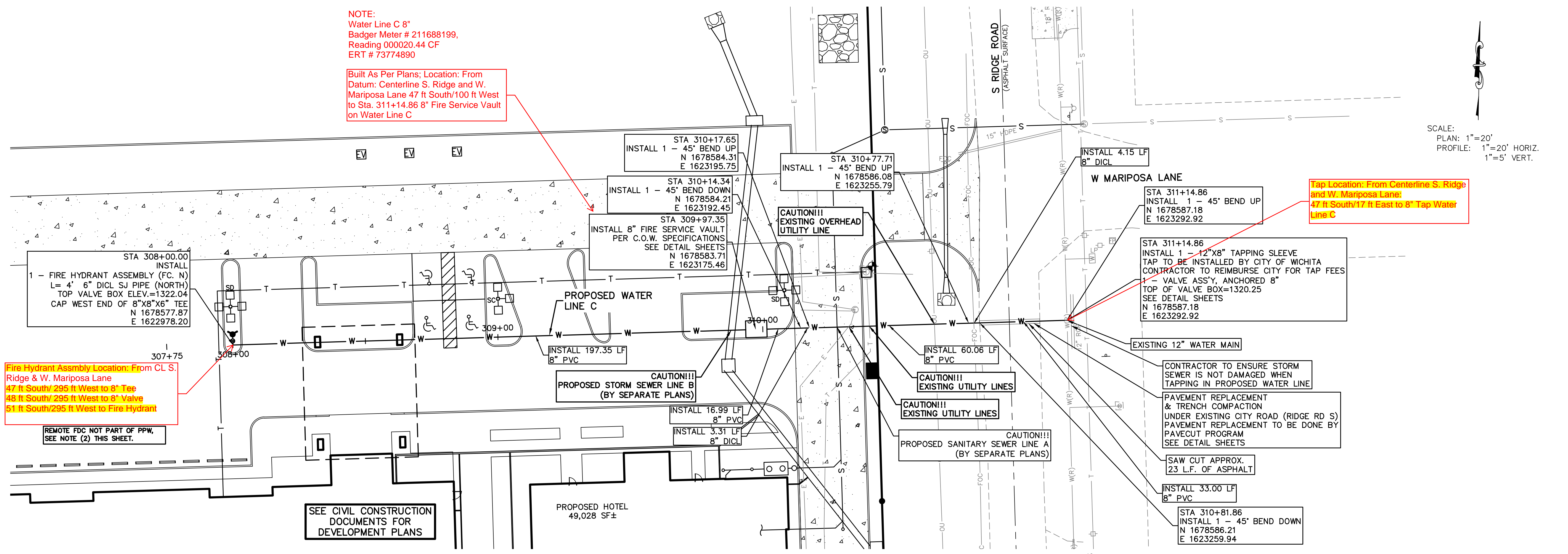
**WATER LINE IMPROVEMENTS**  
WATER LINE A - PLAN & PROFILE

THIS DRAWING SHALL NOT BE UTILIZED BY ANY PERSON, FIRM, OR CORPORATION IN WHOLE OR IN PART WITHOUT THE SPECIFIC PERMISSION OF KAW VALLEY ENGINEERING, INC.



NOTE:  
Water Line C 8"  
Badger Meter # 211688199,  
Reading 000020.44 CF  
ERT # 73774890

Built As Per Plans; Location: From  
Datum: Centerline S. Ridge and W.  
Mariposa Lane 47 ft South/100 ft West  
to Sta. 311+14.86 8" Fire Service Vault  
on Water Line C



SCALE:  
PLAN: 1"=20'  
PROFILE: 1"=20' HORIZ.  
1"=5' VERT.

Tap Location: From Centerline S. Ridge  
and W. Mariposa Lane;  
47 ft South/17 ft East to 8" Tap Water  
Line C

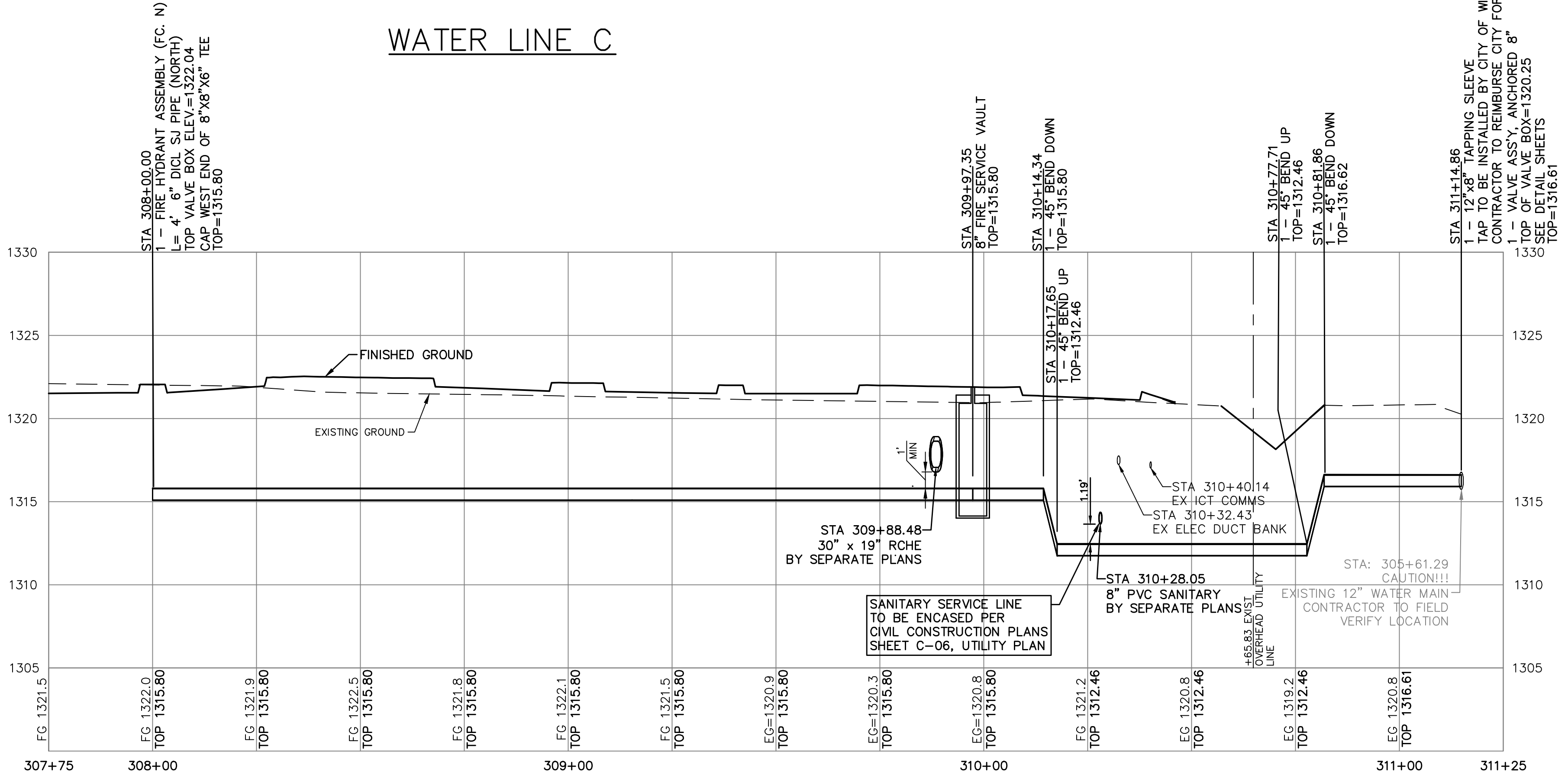
Fire Hydrant Assembly Location: From CL S.  
Ridge & W. Mariposa Lane  
47 ft South/295 ft West to 8" Tee  
48 ft South/295 ft West to 8" Valve  
51 ft South/295 ft West to Fire Hydrant

REMOTE FDC NOT PART OF PPW,  
SEE NOTE (2) THIS SHEET.

SEE CIVIL CONSTRUCTION  
DOCUMENTS FOR  
DEVELOPMENT PLANS

PROPOSED HOTEL  
49,028 SF±

WATER LINE C



THIS PLAN SHEET IS PART OF AN OVERALL KAW VALLEY  
ENGINEERING PLAN SET FOR THE SPECIFIC IMPROVEMENTS  
CONTEMPLATED THEREIN. AS SUCH, THE INFORMATION REFLECTED  
HEREIN SHOULD ONLY BE INTERPRETED WITHIN THE CONTEXT OF  
THE COMPLETE PLAN SET.

THE COORDINATES PROVIDED IN THESE PLANS ARE FOR INFORMATION AND  
CHECKING PURPOSES ONLY. IT IS THE CONTRACTOR'S RESPONSIBILITY TO  
CALCULATE CONSTRUCTION STAKING COORDINATES ACCORDING TO THE  
DIMENSIONS SHOWN ON THESE PLANS. CONTRACTOR SHALL VERIFY THE  
ACCURACY OF THE COORDINATES SHOWN IN THE TABLE HEREON BEFORE  
CONSTRUCTION.

0	08/22/23	INITIAL ISSUE	DSN	DWN	CHK
			LDO	CS	JML



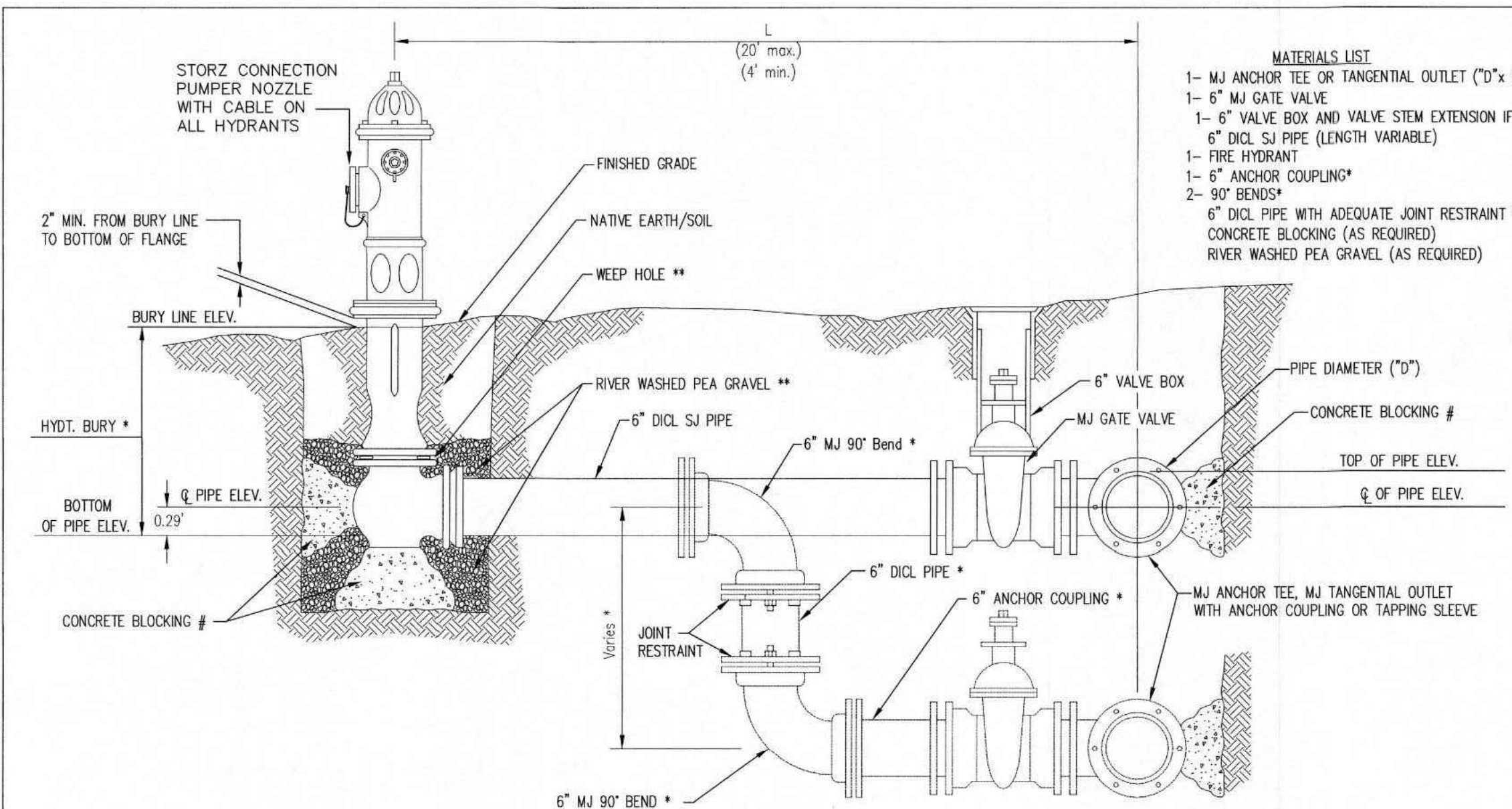
LEON D. OSBOURN  
ENGINEER  
KS # 9772

200 N. EMPORIA, SUITE 100  
WICHITA, KANSAS 67202  
PH. (316) 440-4304  
www.kawvalley.com | www.kveing.com  
wle@kveing.com

**KAW VALLEY ENGINEERING**

KAW VALLEY ENGINEERING, INC. IS AUTHORIZED TO OFFER ENGINEERING  
SERVICES BY KANSAS STATE CERTIFICATE OF AUTHORIZATION # E-113.  
EXPIRES 12/31/24

<b>AIRPORT HOTEL</b>		<b>WATER LINE IMPROVEMENTS</b>	
<b>HARRY ST &amp; RIDGE RD</b>		<b>WATER LINE C - PLAN &amp; PROFILE</b>	
<b>WICHITA, KANSAS</b>			
PROJ. NO.	G22-2268	DESIGNER	SRB
CFN	2268WPP	DRAWN BY	KS
SHEET	5	REV	0

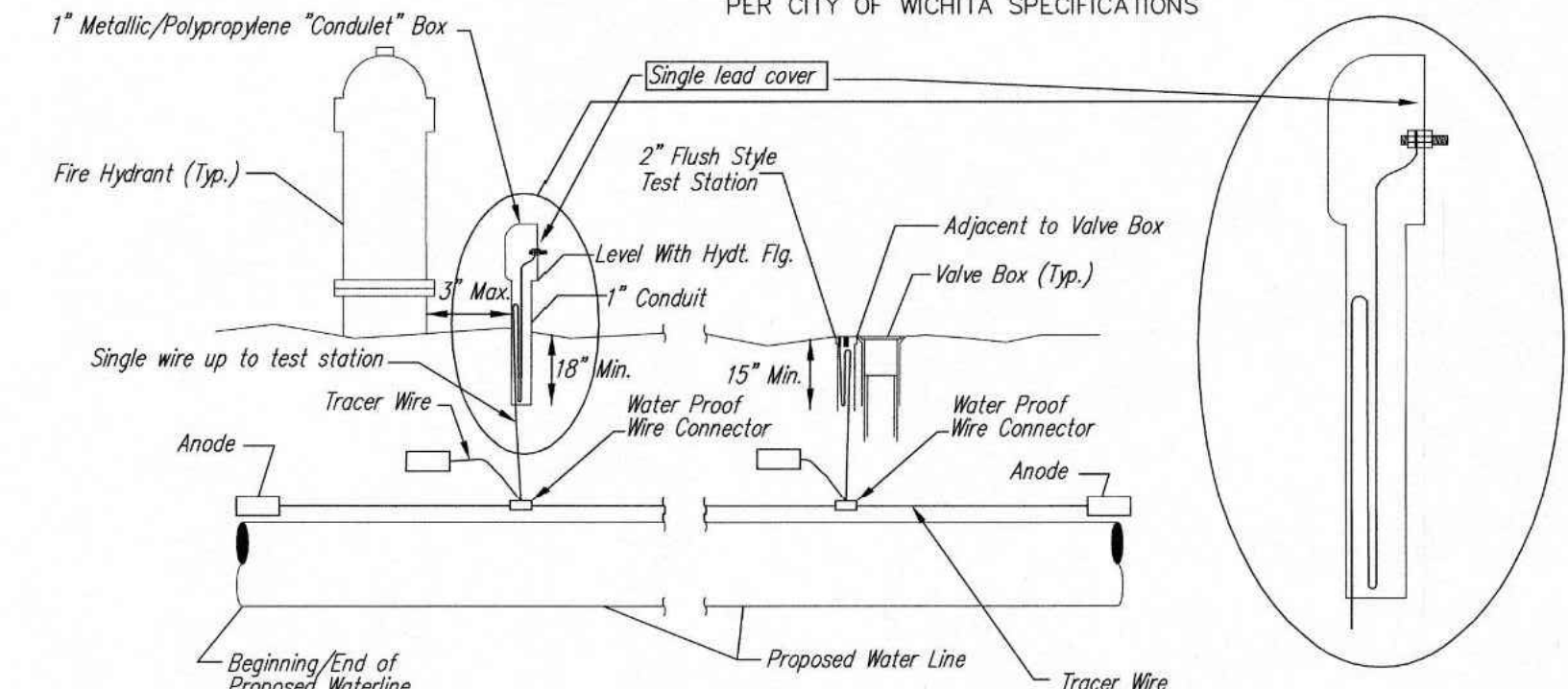


\* IF THE REQUIRED HYDRANT BURY IS IN EXCESS OF 5', BUT LESS THAN 7', CONTRACTOR SHALL USE STANDARD 5' HYDRANT BURY AND HYDRANT BARREL EXTENSIONS AS NECESSARY. IF THE REQUIRED HYDRANT BURY IS GREATER THAN 7', CONTRACTOR SHALL USE 5' HYDRANT BURY, 2-MJ 90° BENDS, 6" ANCHOR COUPLING AND 6" DI CL PIPE AS NECESSARY FOR VERTICAL ADJUSTMENT. THE CONTRACTOR SHALL PROVIDE ADEQUATE THRUST BLOCKING AT HYDRANT AND MEGALUGS, OR SIMILAR RESTRAINT BETWEEN 90° BENDS TO SECURE ALL FITTINGS DURING TESTING AND OPERATION. THE CONTRACTOR SHALL PROVIDE A VALVE STEM EXTENSION PER DETAIL THIS SHEET.

\*\* CAUTION: WEEP HOLES TO BE KEPT CLEAR DURING CONSTRUCTION AND BACKFILL. CONCRETE FOR THRUST BLOCKING SHALL NOT OBSTRUCT WEEP HOLES. PLACE 1 CUBIC FOOT OF RIVER WASHED PEA GRAVEL AROUND EACH WEEP HOLE.

# CONCRETE THRUST BLOCKING SHALL BE KEPT CLEAR OF BOLTS, NUTS, AND MJ ACCESSORIES.

**FIRE HYDRANT ASSEMBLY**  
 PER CITY OF WICHITA SPECIFICATIONS



**TRACER WIRE**  
 Conductive type pipe locator/tracer wire shall be installed to locate all waterline pipe regardless of pipe material. The wire shall extend the entire length of the proposed pipe. The wire shall be taped to the waterline and pulled with the pipe. A waterproof connector shall be used at splice locations. A complete list of approved tracer wire and waterproof connectors can be found on the City of Wichita's website at [www.wichita.gov](http://www.wichita.gov).

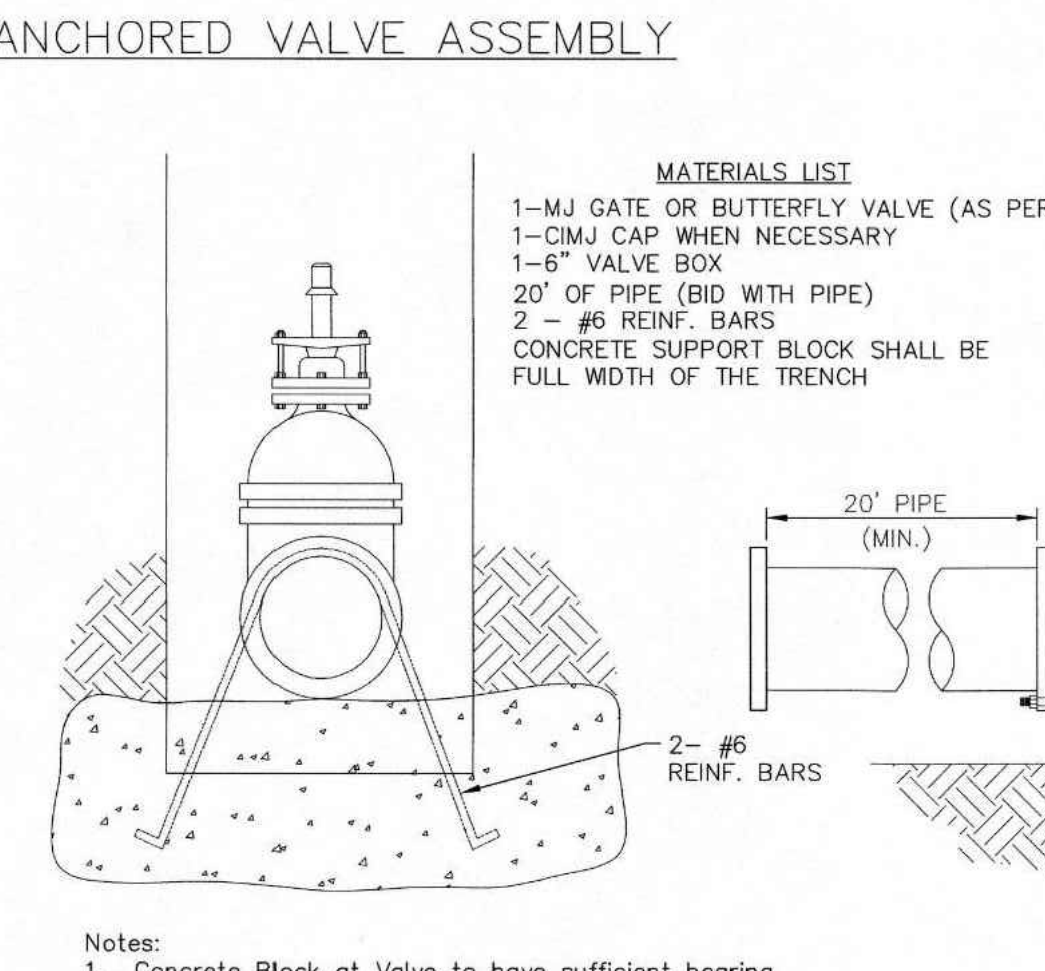
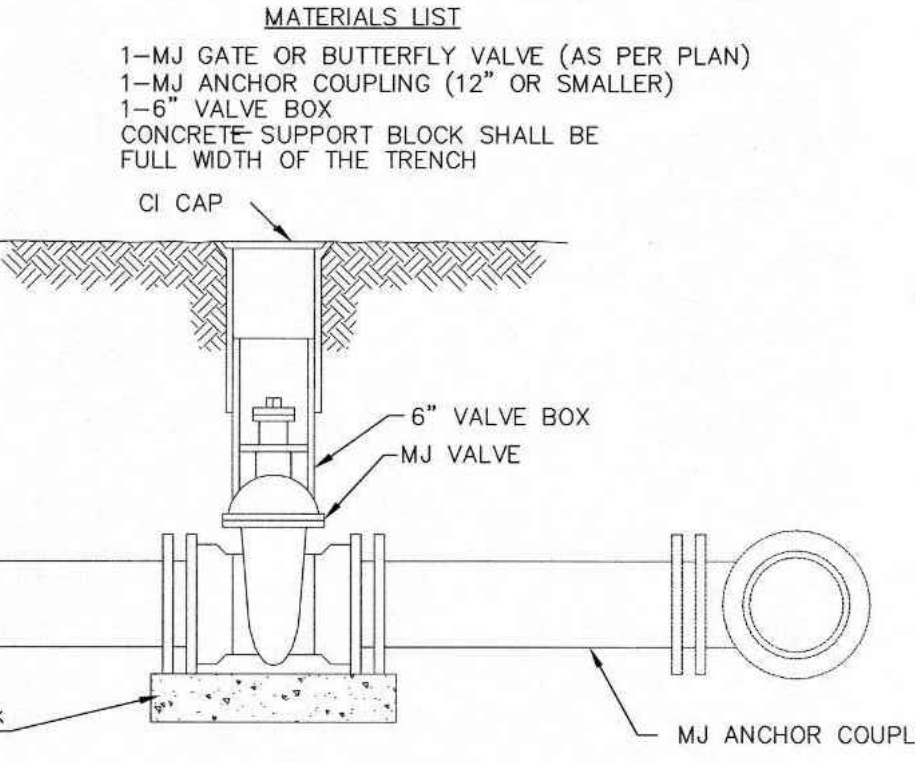
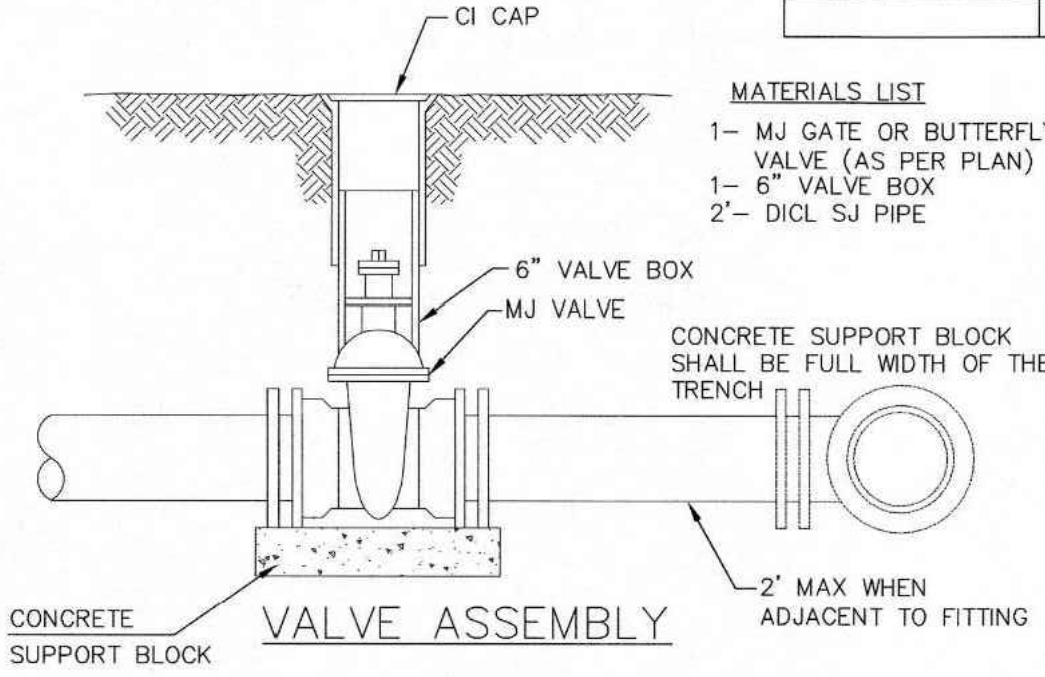
**WIRES**  
 The tracer wire shall be Blue No. 12 AWG CCS with 45 mil HDPE insulation. To allow for grade adjustment, a minimum of 12" of excess wire shall be coiled at the bottom of the test station for all wires. Wire connectors shall be installed per manufacturer recommendations. Contractor shall attach wire being installed with proposed water main to any tracer wire installed with adjacent waterline projects.

**TEST STATIONS**  
 The test station for fire hydrant application shall be a 1" "conduit" style station as manufactured by AGR Industries with a removable solid cover having a single lead extending from the face or approved equal. The "conduit" style test station shall be attached to a 1" rigid galvanized conduit with a minimum length of 36" and plastic end bushing. The flush style shall have the word "WATER" stamped or molded in the lid. The test station for valve applications shall be a 2" flush style test station with wire connector on lid. Model # 12PH7B1LP Handley Industries or CD14\*TP SnakePit as manufactured by Copperhead Industries or approved equal. The flush style shall have the word "WATER" stamped or molded into the lid. All test stations shall be manufactured using molded blue tops or sufficiently coated with blue enamel paint. The tracer wire and the anode wire shall be installed to allow 12" of wire within the test station. The location of all test stations shall be recorded, and shown in the as-built drawings. Flush style test stations shall not be installed in pavement or sidewalk unless approved by the Engineer. Contractor shall extend tracer wire & move flush mount test station to nearest location out of pavement or sidewalk.

**ANODES**  
 The anodes shall be 3 lb. bare zinc or magnesium. The anodes shall be buried at the same elevation as the waterline at each test station. The anodes shall be connected to 12 AWG CCS which shall be extended to the test station.

**TRACER WIRE DETAIL**  
 COST IS SUBSIDIARY TO PIPE INSTALLATION

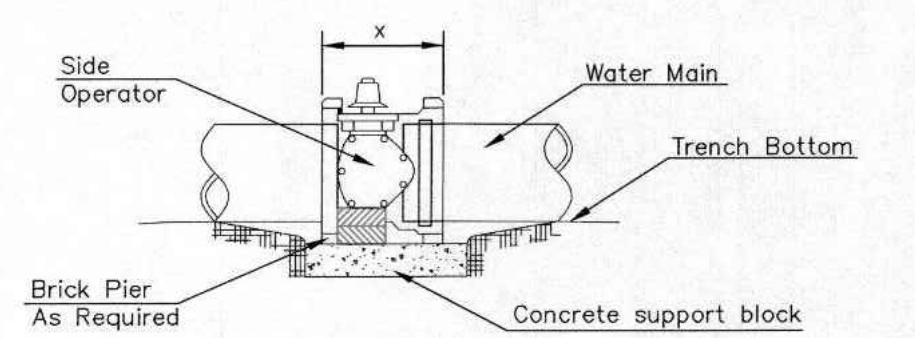
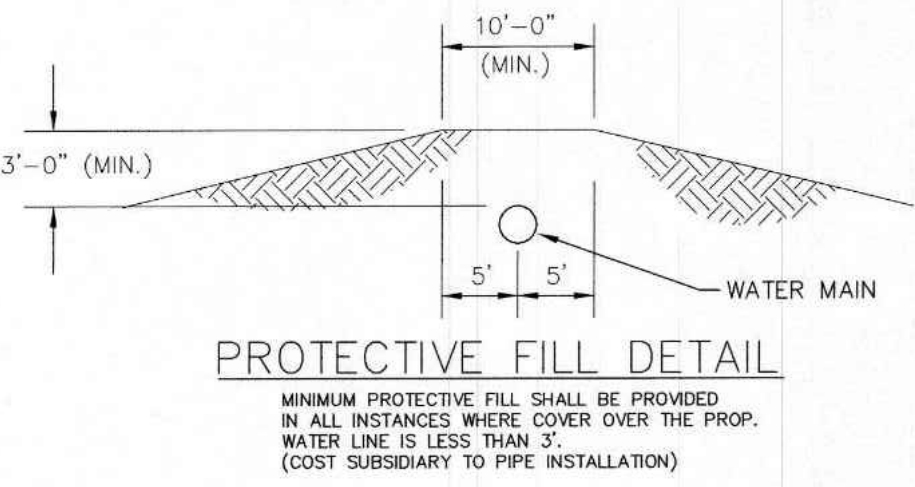
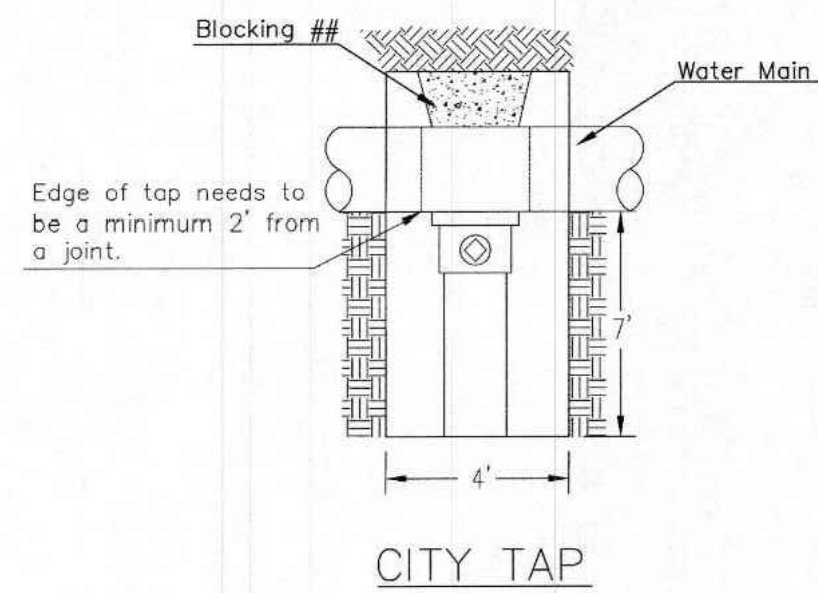
FIRE HYDRANTS REQUIRED				
STATION	BURY LINE ELEVATION	TOP OF PIPE ELEVATION	FIRE HYDRANT BURY REQUIRED*	VALVE STEM EXT. REQUIRED (ft)*
301+27.67	1322.25	1316.78	6.13'	1'
308+00.00	1322.03	1315.80	6.89'	2'



THRUST AT VALVES	
VALVE	THRUST AT 150 #/sq
4"	1809 lbs.
6"	4245 lbs.
8"	7540 lbs.
12"	16965 lbs.

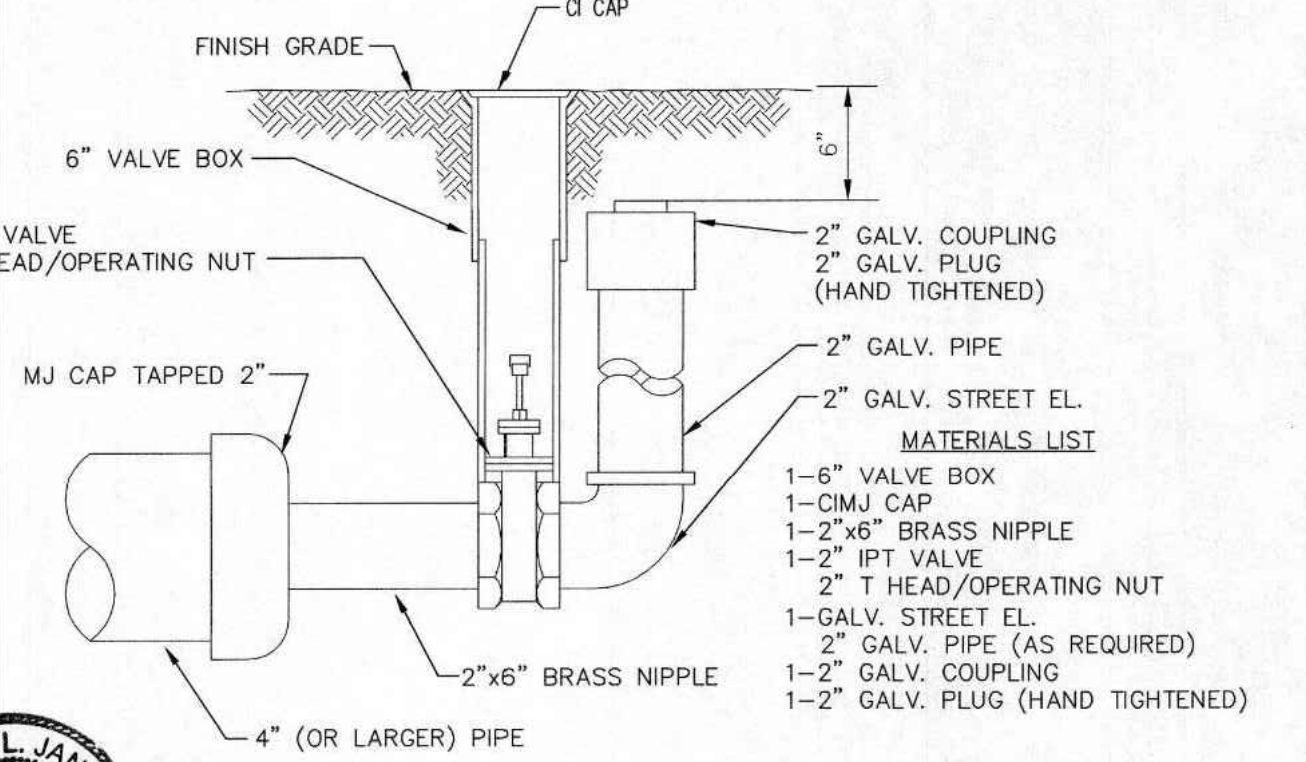
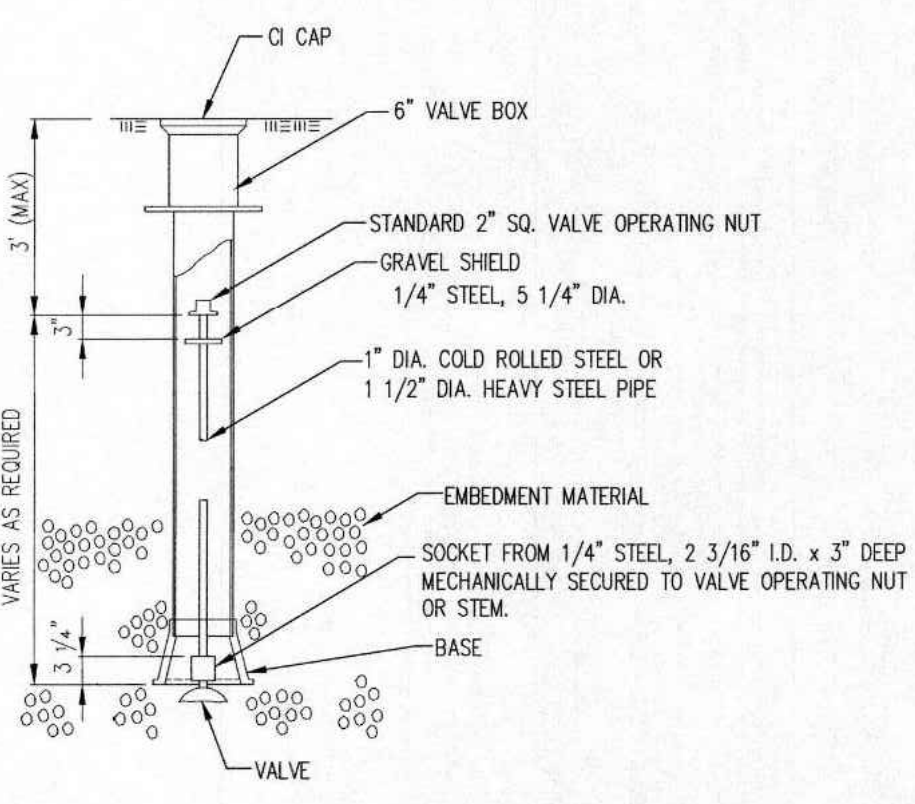
**Notes:**  
 1. Concrete Block at Valve to have sufficient bearing in undisturbed soil to prevent thrust movement as shown in table at right. Field Engineer to determine thrust loading of undisturbed soil and final size of thrust block.  
 2. The thrust block shall be constructed such that bolts, nuts, and other MJ accessories are kept clear of concrete.  
 3. All valves at dead ends and at other locations as called out on the plans shall be blocked as shown here.

**ANCHORED VALVE ASSEMBLY, SPECIAL**



**NOTES**  
 1. This detail covers Butterfly Valve installation, inclusive, regardless of type of pipe or joint used. 24" and larger lines to be detailed on plans.  
 2. 6" Valve Box and Cover required per City of Wichita Std. Specifications.  
 3. Conc. Support Block to be full width of trench.

**CONCRETE SUPPORT BLOCKING FOR BUTTERFLY VALVE INSTALLATION**



**STANDARD WATER ASSEMBLY DETAIL**

CITY ENGINEER  
**GARY JANZEN, P.E.**

PROJECT NUMBER: OCA NUMBER: DATE:

CITY ENGINEER'S OFFICE  
 CITY HALL - SEVENTH FLOOR  
 455 NORTH MAIN STREET  
 WICHITA, KANSAS 67202-1620  
 (316) 268-4501

SHEET

PROJ. NO. G22-2268  
 DESIGNER: SRB  
 DRAWN BY: KS  
 CFN: 2268WDET  
 SHEET: 7  
 REV: 0

LEON D. OSBOURN  
 ENGINEER  
 KS # 9772

LEON D. OSBOURN  
 9772  
 8/22/2023  
 PROFESSIONAL ENGINEER

200 N. EMPORIA, SUITE 100  
 WICHITA, KANSAS 67202  
 PH. (316) 440-4304  
 www.kawvalleyeng.com | www.kveing.com

**KAW VALLEY ENGINEERING**  
 KAW VALLEY ENGINEERING, INC., IS AUTHORIZED TO OFFER ENGINEERING SERVICES BY KANSAS STATE CERTIFICATE OF AUTHORIZATION # E-113. EXPIRES 12/31/24

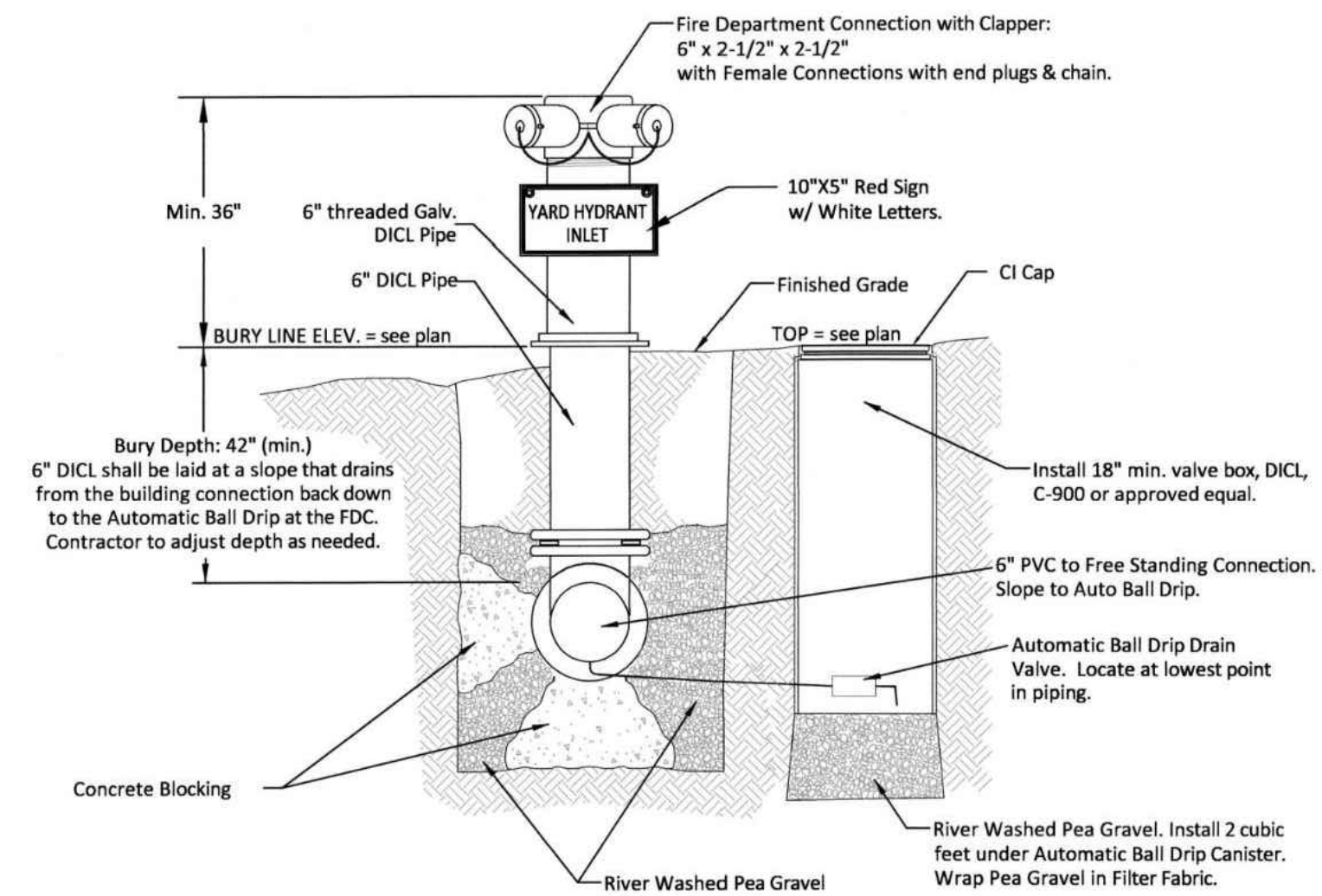
**AIRPORT HOTEL**  
 HARRY ST & RIDGE RD  
 WICHITA, KANSAS

**WATER LINE IMPROVEMENTS**  
 STANDARD WATER ASSY DETAIL

REV DATE DESCRIPTION  
 0 08/22/23 INITIAL ISSUE  
 JML  
 CS  
 DSN  
 DWN  
 CHK

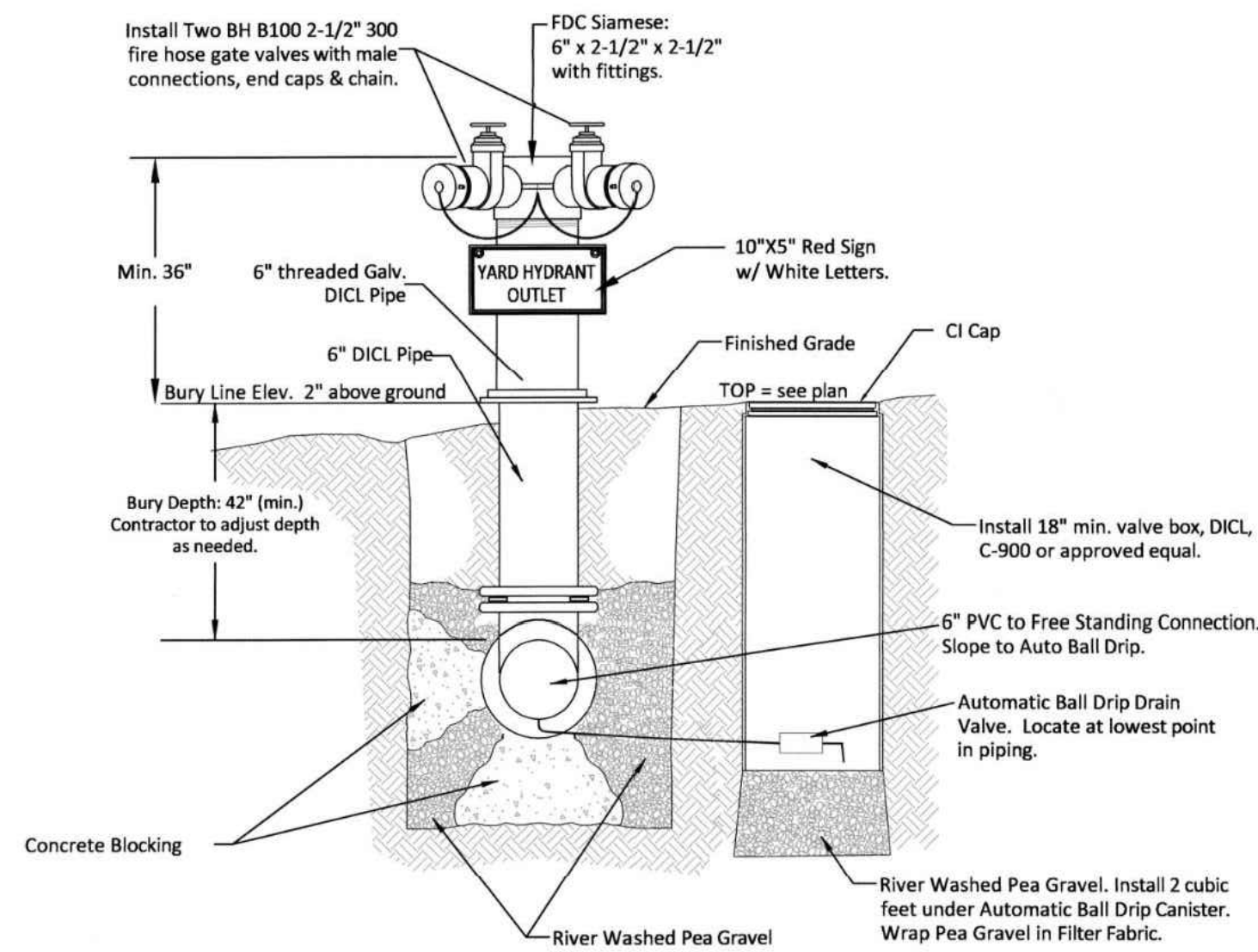
**FREE STANDING YARD HYDRANT (also called Dry Fire Line)**

**Inlet and Outlet to be used together to provide fire hydrant coverage on the far side of a building.**



**1 FREE STANDING YARD HYDRANT INLET**  
NOT TO SCALE

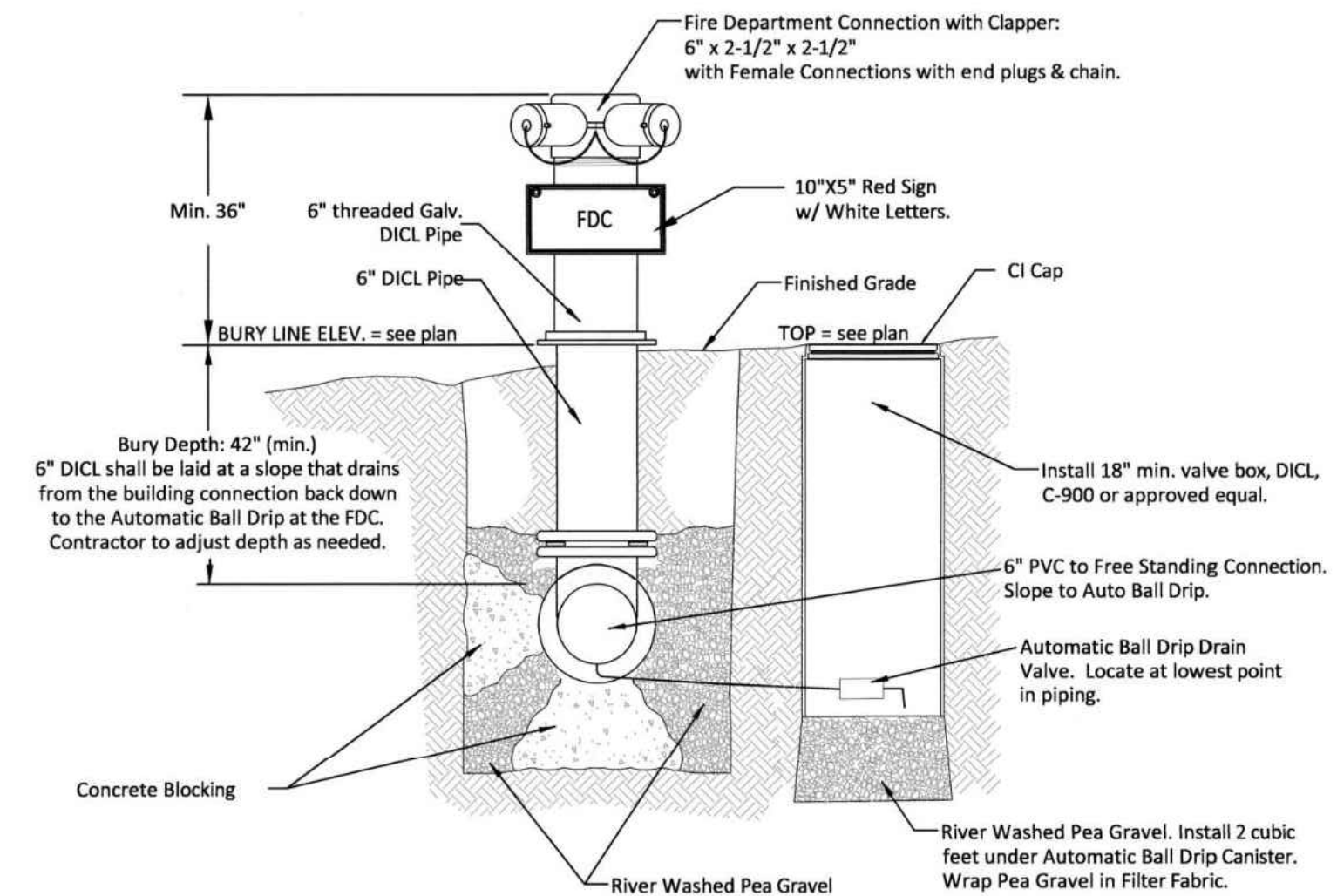
To be located within 150' of a Fire Hydrant



**2 FREE STANDING YARD HYDRANT OUTLET**  
NOT TO SCALE

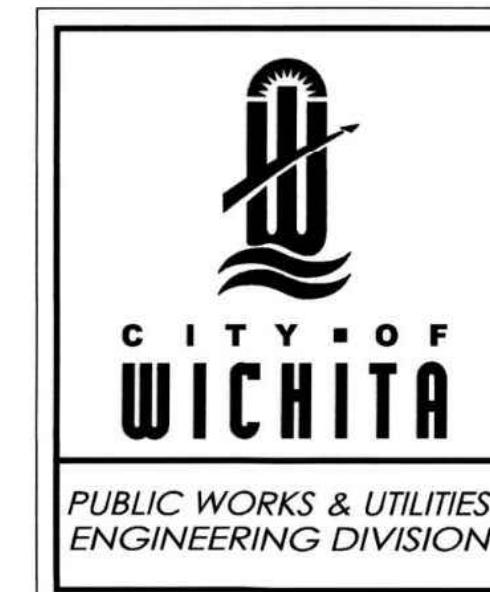
**REMOTE FIRE DEPARTMENT CONNECTION**

**Same construction as Free Standing Yard Hydrant Inlet, with different sign. Used to boost interior sprinkler systems.**



**REMOTE FIRE DEPARTMENT CONNECTION**  
NOT TO SCALE

To be located within 150' of a Fire Hydrant



FREE STANDING YARD HYDRANT AND REMOTE FDC DETAIL		
CITY ENGINEER <b>GARY JANZEN, P.E.</b>		
PROJECT NUMBER	OCA NUMBER	DATE
		SEPTEMBER 2019
CITY ENGINEER'S OFFICE CITY HALL - SEVENTH FLOOR 435 NORTH MAIN STREET WICHITA, KANSAS 67202-1620 (316) 268-4501		SHEET

REV	DATE	DESCRIPTION
0	08/22/23	INITIAL ISSUE
		DSN
		DWN
		CS
		JML



LEON D. OSBOURN  
ENGINEER  
KS # 9772

200 N. EMPORIA, SUITE 100  
WICHITA, KANSAS 67202  
PH. (316) 440-4304  
www.kaveing.com | www.kveing.com  
w@kveing.com

**KAW VALLEY ENGINEERING**

KAW VALLEY ENGINEERING, INC., IS AUTHORIZED TO OFFER ENGINEERING SERVICES BY KANSAS STATE CERTIFICATE OF AUTHORIZATION # E-113. EXPIRES 12/31/24

**AIRPORT HOTEL**  
HARRY ST & RIDGE RD  
WICHITA, KANSAS

**WATER LINE IMPROVEMENTS**  
FREE STANDING YARD HYDRANT DETAIL

PROJ. NO.	G22-2268
DESIGNER	SRB
DRAWN BY	KS
CFN	2268WDET
SHEET	REV
11	0

# ARCHITECTURAL SURVEY

State of Kansas )  
Sedgwick County ) SS

We, Savoy Company, P.A., Surveyors in aforesaid County and State do hereby certify that, under the supervision of the undersigned, we did on this 20th day of June, 2022, survey the following described property.

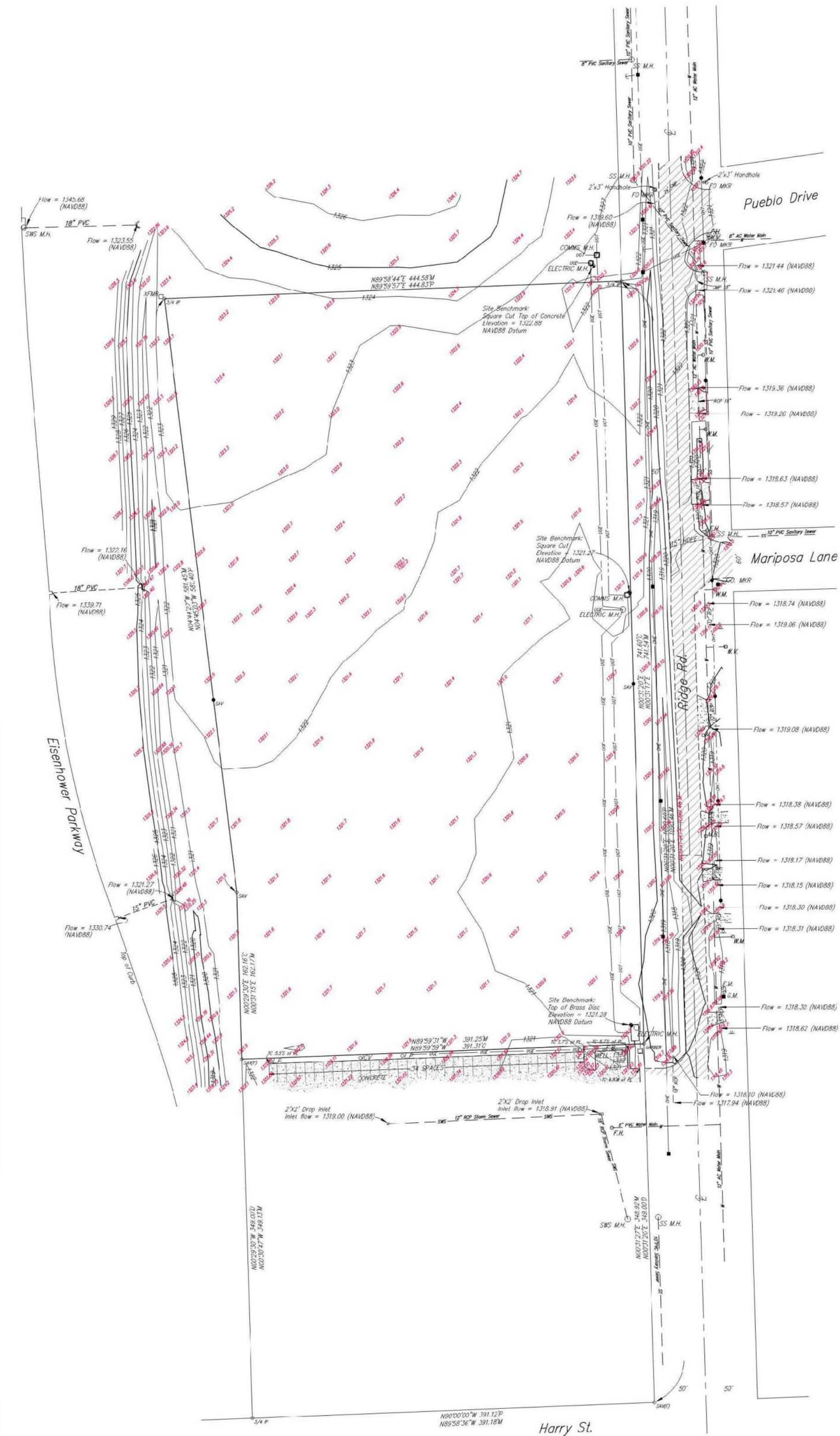
Lot 1, Block 1, Mid-Continent Airport 2nd Addition to Wichita, Sedgwick County, Kansas except the South 349 feet thereof.

There are no encroachments onto said Parcel by buildings on adjacent parcels.

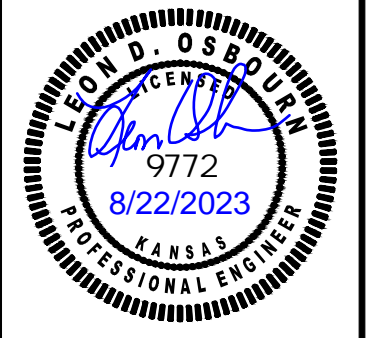
The accompanying sketch is a true and correct exhibit of said survey.



- LEGEND
- = GAS MAIN
  - = UNDERGROUND TELEPHONE
  - = UNDERGROUND ELECTRIC
  - = 48" RIBBON CONCRETE PIPE
  - = SANITARY SEWER
  - = STORM WATER SEWER
  - = UNDERGROUND ELECTRIC
  - = UNDERGROUND TELECOMMUNICATIONS
  - = MANHOLE
  - = 1/4" IRON PIPE (FOUND ORIGIN UNKNOWN)
  - = 1/2" REBAR W/SAVORY CAP (FOUND)
  - = 1/2" REBAR W/SAVORY CAP (FOUND)
  - = 1/2" REBAR W/SAVORY CAP (SET)
  - = CITY OF WICHITA CONTROL TABLE (FOUND)
  - = BENCH MARK
  - = ELECTRIC BOX
  - = ELECTRIC METER
  - = FIRE HYDRANT
  - = FIRE CHIEF MANHOLE
  - = GAS METER
  - = IRRIGATION CONTROL VALVE
  - = LIGHT POLE
  - = MAIL BOX
  - = POWER POLE
  - = SIGN
  - = TELEPHONE POLE
  - = WATER METER
  - = WATER METER
  - = WATER VALVE
  - = ELECTRIC TRANSFORMER



		JML
	CS	DWN
	LDO	DSN
	08/22/23	INITIAL ISSUE
	REV	DATE DESCRIPTION
0		



LEON D. OSBOURN  
ENGINEER  
KS # 9772

200 N. EMPORIA, SUITE 100  
WICHITA, KANSAS - 67202  
PH. (316) 440-4304  
www.kaveing.com | www.kveing.com

**KAW VALLEY ENGINEERING**

KAW VALLEY ENGINEERING, INC., IS AUTHORIZED TO OFFER ENGINEERING SERVICES BY KANSAS STATE CERTIFICATE OF AUTHORIZATION # E-113. EXPIRES 12/31/24

**AIRPORT HOTEL  
HARRY ST & RIDGE RD  
WICHITA, KANSAS**

**WATER LINE IMPROVEMENTS  
SAVOY SURVEY**

PROJ. NO.	G22-2268
DESIGNER	SRB
DRAWN BY	KS
CFN	2268WDET
SHEET	17
REV	0