

**GENERAL NOTES**

- THE CONTRACTOR SHALL COMPLY WITH ALL APPLICABLE SAFETY REGULATIONS. ALL CONSTRUCTION SHALL BE COMPLETED FOLLOWING CURRENT CITY STANDARD SPECIFICATIONS AND SPECIAL PROVISIONS.
- CONTRACTOR WILL BE REQUIRED TO PROVIDE NOTICE TO UTILITY COMPANIES A MINIMUM OF SEVENTY-TWO (72) HOURS PRIOR TO ANY EXCAVATION, AS FOLLOWS:  
KANSAS ONE-CALL 687-2470  
THE CONTRACTOR MUST NOTIFY THE FOLLOWING IN CASE OF AN EMERGENCY:  
AT&T 1-800-246-8464  
BLACK HILLS ENERGY (GAS) 1-800-694-8989  
CITY OF WICHITA WATER & SEWER 1-316-219-9921  
CITY OF WICHITA STORMWATER 1-316-268-4090  
CITY OF WICHITA TRAFFIC 1-316-268-4034  
COX COMMUNICATIONS 1-888-249-3530  
KANSAS GAS SERVICE 1-888-482-4850  
EVERGY 1-800-544-4857
- UTILITY SERVICE LINES, POLES, ETC. ARE TO BE ADJUSTED AS NECESSARY BY OTHERS PRIOR TO CONSTRUCTION UNLESS THE PLANS SPECIFICALLY CALL FOR THEIR ADJUSTMENT BY THE CONTRACTOR OR UNLESS THE PLANS SPECIFICALLY IDENTIFY A UTILITY TO BE ADJUSTED BY ITS OWNER DURING CONSTRUCTION. EXISTING UTILITIES AND THEIR LOCATION, AS SHOWN ON THE PLANS, REPRESENT THE BEST INFORMATION OBTAINABLE FOR DESIGN. THE CONTRACTOR WILL BE REQUIRED TO WORK AROUND EXISTING UTILITIES WITHIN THE RIGHT-OF-WAY WHICH DO NOT CONFLICT WITH PROPOSED CONSTRUCTION.
- RUBBLE FROM THE REMOVAL OF MISCELLANEOUS STRUCTURES AND EXCESS EXCAVATION WHICH IS TO BE WASTED SHALL BE DISPOSED OF ON SITES TO BE PROVIDED BY THE CONTRACTOR. THESE SITES SHALL BE APPROVED BY THE ENGINEER AS TO SUITABILITY, APPEARANCE AND SITE LOCATION. LOCATIONS, IN THE OPINION OF THE ENGINEER, THAT WILL LEAVE AN UNSIGHTLY APPEARANCE WILL NOT BE APPROVED. ALL DISPOSAL SITES MUST BE APPROVED BY THE KANSAS DEPARTMENT OF HEALTH AND ENVIRONMENT. MATERIAL EITHER STOCKPILED OR DISPOSED OF IN A FLOOD PLAIN WILL REQUIRE A KANSAS STATE BOARD OF AGRICULTURE PERMIT, AND MATERIAL DUMPED IN WATERS OF THE UNITED STATES OR WETLANDS IS SUBJECT TO U.S. CORPS OF ENGINEERS PERMITTING REGULATIONS. ANY MATERIAL BURIED OR STOCKPILED BEYOND APPROVED CONSTRUCTION LIMITS WILL REQUIRE ADDITIONAL ARCHAEOLOGICAL INVESTIGATIONS UNLESS BURIED IN A PREVIOUSLY APPROVED BORROW LOCATION.
- TREES AND SHRUBS IN PUBLIC RIGHT-OF-WAY WHICH ARE IN DIRECT CONFLICT WITH PROPOSED NEW CONSTRUCTION SHALL BE REMOVED BY THE CONTRACTOR WITH THE CITY ENGINEER'S APPROVAL. TREES AND SHRUBS WHICH ARE NOT IN DIRECT CONFLICT WITH PROPOSED NEW CONSTRUCTION SHALL BE SAVED AND PROTECTED FROM DAMAGE.
- THE CONTRACTOR SHALL GIVE ALL PROPERTY OWNERS AND/OR TENANTS OF DEVELOPED PROPERTY ADJUTING THE CONSTRUCTION OF THIS PROJECT A MINIMUM OF TEN (10) DAYS NOTICE PRIOR TO START OF CONSTRUCTION.
- THE CONTRACTOR SHALL BE RESPONSIBLE FOR PRESERVING PROPERTY IRONS. THE CONTRACTOR WILL BE REQUIRED TO RE-ESTABLISH ANY PROPERTY IRONS WHICH ARE DAMAGED OR DESTROYED BY HIS CONSTRUCTION OPERATIONS. SUCH IRONS SHALL BE RE-ESTABLISHED BY A LICENSED LAND SURVEYOR IN ACCORDANCE WITH STATE LAWS.
- THE ENGINEERING DIVISION SHALL FIELD LOCATE WATER VALVES ONE TIME DURING CONSTRUCTION WHEN REQUESTED BY THE CONTRACTOR. IT SHALL BE THE CONTRACTOR'S RESPONSIBILITY TO PRESERVE SUCH FIELD LOCATIONS DURING THE CONSTRUCTION PROCESS. WATER VALVES, VALVE BOXES OR FIRE HYDRANTS DAMAGED DURING CONSTRUCTION SHALL BE REPAIRED BY CONTRACTOR AT HIS OWN EXPENSE. VALVE BOXES AND WATER METERS WITHIN THE PROJECT LIMITS SHALL BE ADJUSTED TO MATCH FIELD GRADES BY THE CONTRACTOR.
- THE CONTRACTOR SHALL NOTIFY THE INSPECTING ENGINEER AND DAWNITA REINHARDT AT 650-0740 WITH THE CITY OF WICHITA WITH THE ANTICIPATED CONSTRUCTION START DATE AND NOTIFY THEM OF PROJECT COMPLETION. STAKING AND INSPECTION FOR THIS PROJECT WILL BE THE RESPONSIBILITY OF THE CONTRACTOR.
- IF TRAFFIC WILL BE IMPACTED BY CONSTRUCTION, A TRAFFIC CONTROL PLAN MUST BE SUBMITTED AND APPROVED BY THE CITY TRAFFIC ENGINEER AT CAN BEGAIN. BEFORE CONSTRUCTION CAN BEGIN. THE CONTRACTOR SHALL BE RESPONSIBLE FOR ALL TRAFFIC CONTROL MEASURES TO FACILITATE CONSTRUCTION. ALL CONSTRUCTION ZONE MARKINGS AND SIGNAGE SHALL CONFORM TO THE LATEST VERSION OF THE MANUAL ON UNIFORM TRAFFIC CONTROL DEVICES (MUTCD) AS PUBLISHED BY THE US DEPT. OF TRANSPORTATION, FEDERAL HIGHWAY ADMINISTRATION. ALL COSTS ASSOCIATED WITH CONSTRUCTION MARKINGS AND SIGNAGE SHALL BE THE CONTRACTOR'S RESPONSIBILITY.
- ALL ELEVATIONS SHOWN ARE NAVD 88.
- ALL AREAS DISTURBED DURING CONSTRUCTION THAT WILL NOT BE UNDER PROPOSED PAVEMENT SHALL BE RESTORED TO MATCH EXISTING CONDITIONS.
- ANY SIDEWALK, DRIVE APPROACH, CURB, OR STREET PAVEMENT REMOVED TO CONSTRUCT PROJECT MUST HAVE A PAVEMENT CUT PERMIT AND BE REPLACED BY CITY CONTRACTOR. PERMITS CAN BE OBTAINED BY CALLING 316-268-4501 OR 316-268-4480.
- ALL APPLICABLE FEES (TAP, EQUITY, IN LIEU OF A MAIN BENEFIT) MUST BE PAID BEFORE ANY CONNECTIONS CAN BE MADE ON THIS PROJECT. QUOTES CAN BE OBTAINED ON FEES BY CALLING 316-268-4555.
- CITY MAINTENANCE OF WATER MAINS ENDS AT RIGHT-OF-WAY OR EASEMENT LINE OR WITHIN TWO FEET OF VAULT.
- MAINTAIN A MINIMUM OF 10-FOOT HORIZONTAL SEPARATION BETWEEN ALL WATER LINES (MAINS, SERVICES, AND FIRE HYDRANTS) AND ALL SANITARY SEWER LINES (MAINS, SERVICES, AND MANHOLES). ALL SEPARATION DISTANCES ARE TO BE MEASURED FROM EDGE-TO-EDGE, AT THE CLOSEST POINT.
- MAINTAIN A MINIMUM OF 2-FOOT VERTICAL SEPARATION BETWEEN ALL WATER LINES (MAINS AND SERVICES) AND ALL GRAVITY SANITARY SEWER LINES (MAINS, SERVICES, AND MANHOLES) AT CROSSINGS. ALL SEPARATION DISTANCES ARE TO BE MEASURED FROM EDGE-TO-EDGE, AT THE CLOSEST POINT.
- MAINTAIN A MINIMUM OF 2-FOOT VERTICAL SEPARATION BETWEEN ALL WATER LINES (MAINS AND SERVICES) AND ALL PRESSURIZED SANITARY SEWER LINES (FORCE MAINS AND SERVICES) AT CROSSINGS. WATERLINES MUST ALWAYS BE PLACED ABOVE PRESSURIZED SANITARY SEWER LINES WHERE THEY CROSS. ALL SEPARATION DISTANCES ARE TO BE MEASURED FROM EDGE-TO-EDGE, AT THE CLOSEST POINT.
- CONTRACTOR SHALL LIMIT THE EXTENT OF TRENCH OPEN OVERNIGHT AND WEEKENDS TO LESS THAN 50 FEET.
- EXISTING UTILITIES AND THEIR LOCATION, AS SHOWN ON THE PLANS REPRESENT THE BEST INFORMATION OBTAINABLE FOR DESIGN. LOCATION INFORMATION HAS BEEN OBTAINED FROM THE VARIOUS COMPANIES AND IS EITHER FROM COMPANY UTILITY DRAWINGS OR COMPANY PROVIDED FIELD LOCATIONS. THE PLAN LOCATIONS SHOWN ARE NOT GUARANTEED. ADDITIONAL EXISTING UTILITIES MAY ALSO BE ENCOUNTERED.
- OPENING AND CLOSING OF WATER VALVES SHALL BE DONE SLOWLY TO PREVENT DAMAGE TO THE WATER DISTRIBUTIONS SYSTEM FROM WATER HAMMER. ALL VALVES CLOSED BY THE CONTRACTOR MUST BE REOPENED AS NEW CONSTRUCTION PERMITS. THE PROJECT INSPECTOR MUST ASCERTAIN THAT ANY VALVE CLOSED BY THE CONTRACTOR IS REOPENED. THE CONTRACTOR WILL BE PERMITTED TO OPERATE WATER VALVES ONLY WHEN THE PROJECT INSPECTOR ASSIGNED TO THE PROJECT IS PRESENT.
- THE CONTRACTOR SHALL LAY A TRACER WIRE AND SET TEST STATIONS ALONG ALL WATER PIPE INSTALLED IN ACCORDANCE WITH CITY SPECIFICATIONS AND TRACER WIRE DETAIL ON DETAIL SHEET WL-101. COST IS SUBSIDIARY TO PIPE INSTALLATION.
- THE CONTRACTOR SHALL PROVIDE MATERIALS FOR TEMPORARY BLOWOFF OF WATERLINES. CONNECTIONS TO THE EXISTING WATERLINE(S) SHALL BE MADE WITH CLEAN, SWABBED PIPE AND FLUSHED UPON COMPLETION OF TIES.
- REQUESTS FOR SHORT TERM WATER INTERRUPTIONS SHALL BE MADE TO THE CITY WATER DISTRIBUTION DIVISION AND WILL BE SUBJECT TO THEIR APPROVAL. THE CONTRACTOR SHALL GIVE WRITTEN NOTICE TO ANY PROPERTY OWNER, BUSINESS, AND/OR TENANTS THAT WILL HAVE WATER SERVICE INTERRUPTED AT LEAST 5 DAYS IN ADVANCE. SUCH NOTIFICATIONS SHOULD INDICATE THE TIME AND DATE THAT THE WATER WILL BE TURNED OFF AND WHEN THE SERVICE WILL BE RESTORED. NO BUSINESS, PROPERTY OWNER, AND/OR TENANTS SHALL BE WITHOUT WATER SERVICE FOR MORE THAN 8 HOURS, PROPOSED TIE IN LOCATIONS WHICH WILL AFFECT WATER SERVICE TO PROPERTY OWNERS SHALL BE PERFORMED DURING NON-PEAK HOURS.
- THE CONTRACTOR MUST SCHEDULE THE CONNECTIONS TO THE EXISTING MAIN WITH THE CITY SUCH THAT THERE IS A MINIMUM DISRUPTION OF SERVICE. CONNECTIONS SHALL BE MADE DURING PERIODS OF LOW WATER USAGE. THE CONTRACTOR SHALL SUBMIT HIS PROPOSED SCHEDULE FOR COMPLETING WORK FOR CITY APPROVAL AT LEAST 10 DAYS PRIOR TO BEGINNING CONSTRUCTION.
- DEFLECTIONS AT PIPE JOINT OR COUPLINGS SHALL NOT EXCEED THE PIPE MANUFACTURERS RECOMMENDED MAXIMUM. WHERE DEFLECTIONS ARE GREATER THAN THE MAXIMUM ALLOWED, THE CONTRACTOR SHALL UTILIZE GIM LONG SLEEVE OR MULTIPLE JOINTS.
- ANY EXISTING JOINT EXPOSED DURING EXCAVATION SHALL BE REPLACED IF WITHIN FOUR FEET OF PROPOSED JOINT.
- VALVES 12 INCH AND LARGER ARE TO BE OPERATED BY THE CITY WATER DISTRIBUTION DIVISION, 48 HOURS OF ADVANCE NOTICE IS REQUIRED WITH THE WATER DISPATCH AT 316-291-8921.
- ALL WET TAPS SHALL BE INSTALLED BY THE CITY OF WICHITA. THE CONTRACTOR WILL REIMBURSE THE CITY FOR TAPPING FEES.
- THE CONTRACTOR SHALL PROTECT FROM DAMAGE AND SUPPORT EXISTING UTILITIES THROUGH CONSTRUCTION AS APPROVED BY THE UTILITY OWNER AND THE ENGINEER AT THE CONTRACTOR'S EXPENSE.
- WORK DONE UNDER THIS PROJECT IS SUBJECT TO THE CITY OF WICHITA REQUIREMENTS FOR "CONSTRUCTION OF INFRASTRUCTURE IMPROVEMENTS BY PRIVATE CONTRACTOR". THE CONTRACTOR SHALL BE FAMILIAR AND COMPLY WITH ALL OF THE REQUIREMENTS, INCLUDING BONDING, INSPECTION, TESTING, NOTIFICATION, PROVIDING AS-BUILT DRAWINGS, PAYING FOR ALL NECESSARY CONNECTIONS, AND/OR STREET REPAIR FEES AND PROVIDING PIPE MATERIAL AND OTHER CERTIFICATIONS.
- DEVELOPER FOR THIS PROJECT IS:  
MVCB, LLC  
3017 N. CYPRESS DR.  
WICHITA, KS 67226  
STEVE BARRETT  
(316) 641-3269

**PRIVATE WATER DISTRIBUTION SYSTEM IMPROVEMENTS**

TO SERVE

**ATF FORENSIC GSI LAB AS-BUILT PLANS**

THE CITY OF WICHITA, KANSAS  
PAUL GUNZELMAN, P.E. - CITY ENGINEER

**4504 E 18th St N**

PROJECT NO. 2024-016846PPW

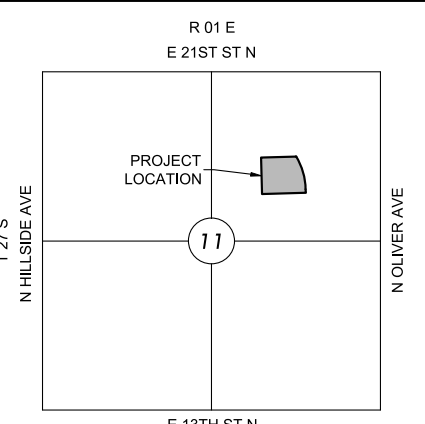
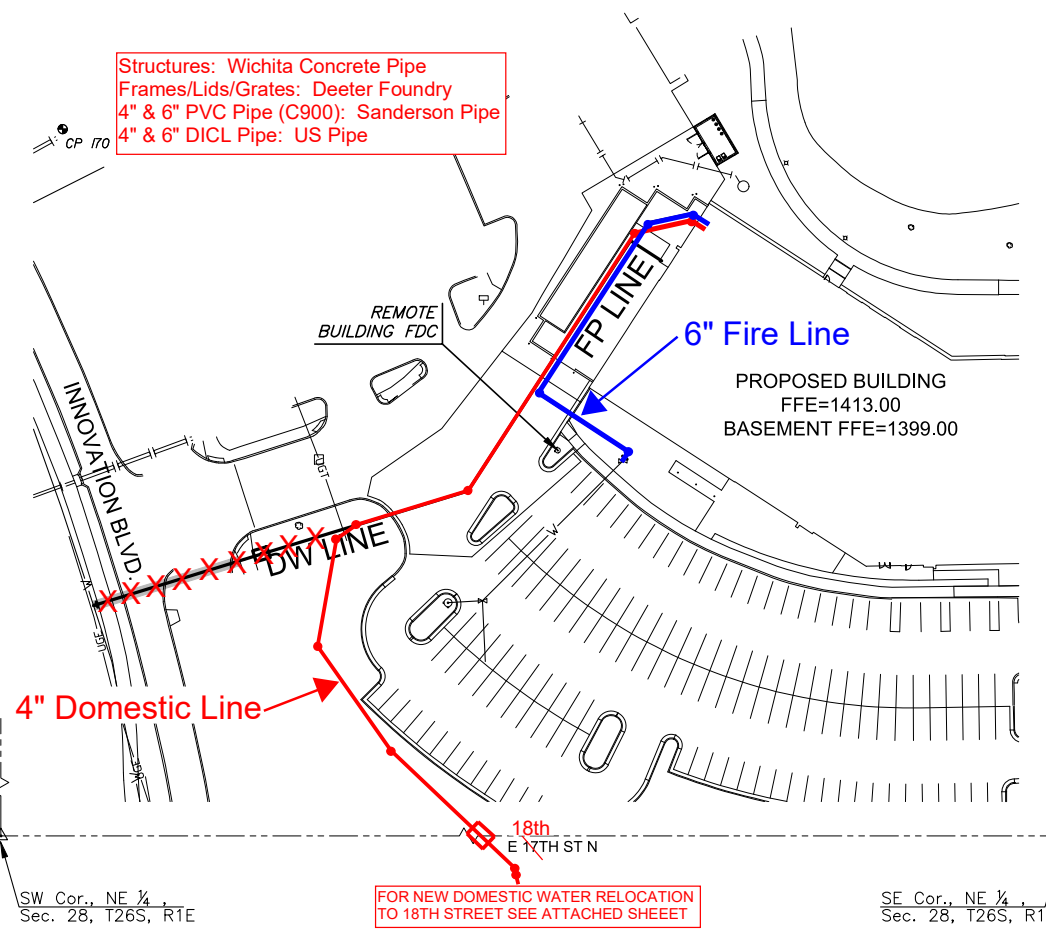
ORG CODE 54030980

Baughman Job # 25-01-E996

Contractor: Fremar Corporation  
Superintendent: Billy Budd  
Inspection: Baughman Company  
Staking: Baughman Company  
Inspector: Jeff Priddle - Baughman Co.  
As-Built Plans: Larry Powell & Jeff Priddle  
As-Built Plans Dated: June 19, 2025

Construction Started March 4th, 2025  
Construction Ended April 17th, 2025

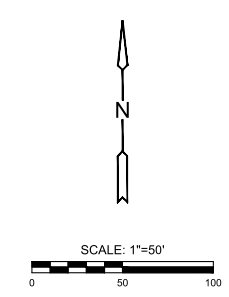
Structures: Wichita Concrete Pipe  
Frames/Lids/Grates: Deeter Foundry  
4" & 6" PVC Pipe (C900): Sanderson Pipe  
4" & 6" DICL Pipe: US Pipe



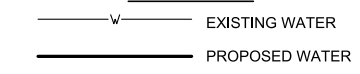
VICINITY MAP  
No Scale

**INDEX TO DRAWINGS**

SHEET NO.	DESCRIPTION
1	TITLE SHEET
2-4	WATER DETAILS
5	FP LINE
6	DW LINE
8-12	BMP DETAILS
7	Aerial View of Domestic Water Line



**LEGEND**



**BENCHMARKS**

- CP 167  
N: 1698588.288 E: 1664433.745 EL: 1401.875  
+CUT front center of curb inlet along 19th Street
- CP 170  
N: 1698109.147 E: 1663984.175 EL: 1409.320  
+CUT NW corner curb inlet south of 19th St, east side Innovation Blvd
- CP 182  
N: 1697700.541 E: 1664660.336 EL: 1408.115  
+CUT NW corner curb inlet north side 19th St between Oliver and Innovation Blvd
- CP 183  
N: 1697732.559 E: 1664113.485 EL: 1409.465  
+CUT SE corner curb inlet east side Innovation Blvd just north of 18th St.
- CP 338  
N: 1698464.749 E: 1664154.406 EL: 1406.115  
+CUT at SE corner of curb inlet south of 19th on East side of parking lot and North of Partnership Bld 7
- CP 339  
N: 1698120.314 E: 1664325.752 EL: 1405.575  
+CUT South of and on east side of parking lot of Partnership Bld 7
- CP 340  
N: 1698028.271 E: 1664711.082 EL: 1410.125  
5/8" x 24" rebar/wired control cap north of Partnership Bld 3A
- CP 341  
N: 1698369.373 E: 1664643.936 EL: 1409.055  
+CUT SE corner curb inlet south side 19th St at SW corner intersection of Braeburn and 19th.

Control Points used for As-Built GPS Northings and Eastings.

**NOTE**

All Control Points shown have elevations established using standard surveying procedures and can be used as temporary benchmarks. When using a Control point as a temporary benchmark, it is recommended that cross-checks be made to other control points or benchmarks to confirm elevations prior to use.

**DATUM**

The Horizontal Datum is based on the Kansas Coordinate System of 1983, NAD83(2011), EPOCH:2010.0000, South Zone. Coordinates shown have been modified to the ground using a combined adjustment factor of 1.001200144. State Plane coordinates can be calculated by multiplying the shown values by 0.99988.

The Vertical Datum is based on the NAVD 88 datum, Geoid18.

NOTE: WATER LINE VALVES TO BE OPERATED BY CONTRACTOR ONLY IF WATER INSPECTOR IS ON SITE.

APPROVED AS NOTED BY WICHITA PUBLIC WORKS ENGINEERING DIVISION & BY WICHITA FIRE DEPARTMENT

Engineering approved by Shawn Mellies on 12/12/24  
Utilities approved by Greg Loiley on 12/12/24  
Fire Department approved by Jose Ocazid on 12/12/24

**NOTE TO CONTRACTORS**

Inspection and testing for the water line is to be provided by a Licensed Consulting Engineering Firm under contract with the Owner/Developer. Said inspection to be in accordance with the City of Wichita standard construction engineering practices and certified by a Professional Engineer Licensed in the state of Kansas. No work shall be performed in dedicated easements or public rights-of-way by the Contractor without such inspection nor shall any work be commenced without written authorization by the City Engineer. All Construction and Materials shall comply with the City of Wichita Specifications and Standards and Special Provision (on file and available in the City Engineer's office) or on the City's Website.

Private Property:  
Installation and testing for the fire protection line is to be performed by a City of Wichita licensed fire protection contractor in accordance with the fire codes as adopted by the City of Wichita. All material and construction practices for the fire protection line shall comply with the fire codes as adopted by the City of Wichita (available from the City of Wichita Fire Department). The contractor shall not commence work without notification and approval of the Wichita Fire Department. Inspection of the fire protection line is to be provided by a licensed Engineering Firm under contract with the Owner/Developer and the Fire Department. The contractor shall not start work until the project inspector is assigned to the project and present on the site. Any work done without inspection will be required to be uncovered for inspection.

An approved copy of these plans signed by City staff is required on-site.

NOTE: ALL LINES TO BE INSTALLED BY OTHERS ARE SUBJECT TO MABCD REVIEW.

NOTE: CONTRACTOR TO VERIFY DEPTH AND LOCATION OF EXISTING UTILITIES PRIOR TO CONSTRUCTION.

Wichita, KS • 316.884.8800

SCOTT PRESTON SWANEY  
LICENSED PROFESSIONAL ENGINEER  
2423  
12/15/24

PRIVATE WATER DISTRIBUTION SYSTEM IMPROVEMENTS

**ATF FORENSIC GSI LAB**

WICHITA STATE UNIVERSITY

PROJECT NO. 2024-016846PPW

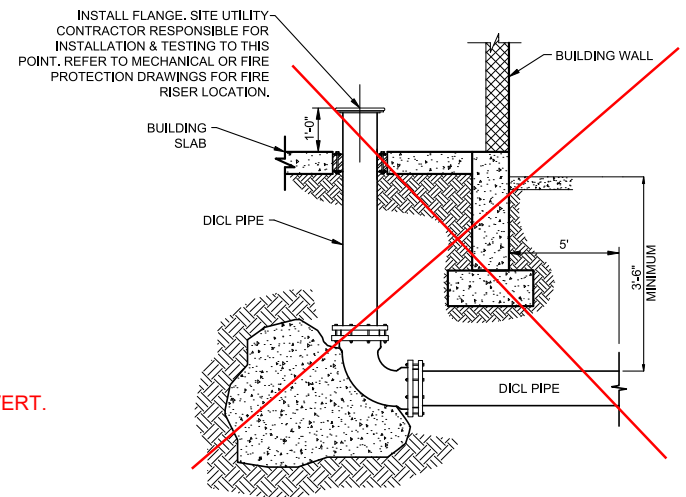
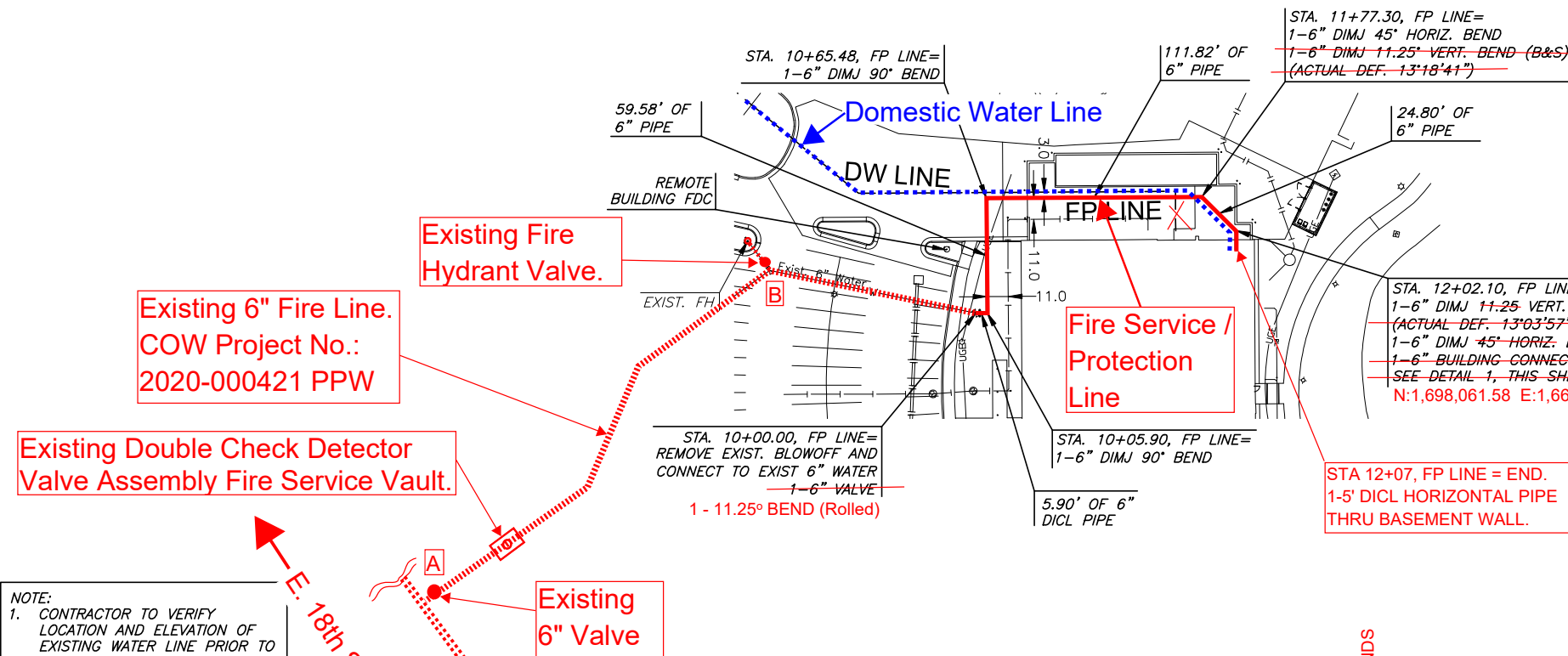
SCALE 1"=50'

DRAWN	DESIGNED	CHECKED
BJL	SPE	SPE

SHEET NO. C-101  
01 OF 10



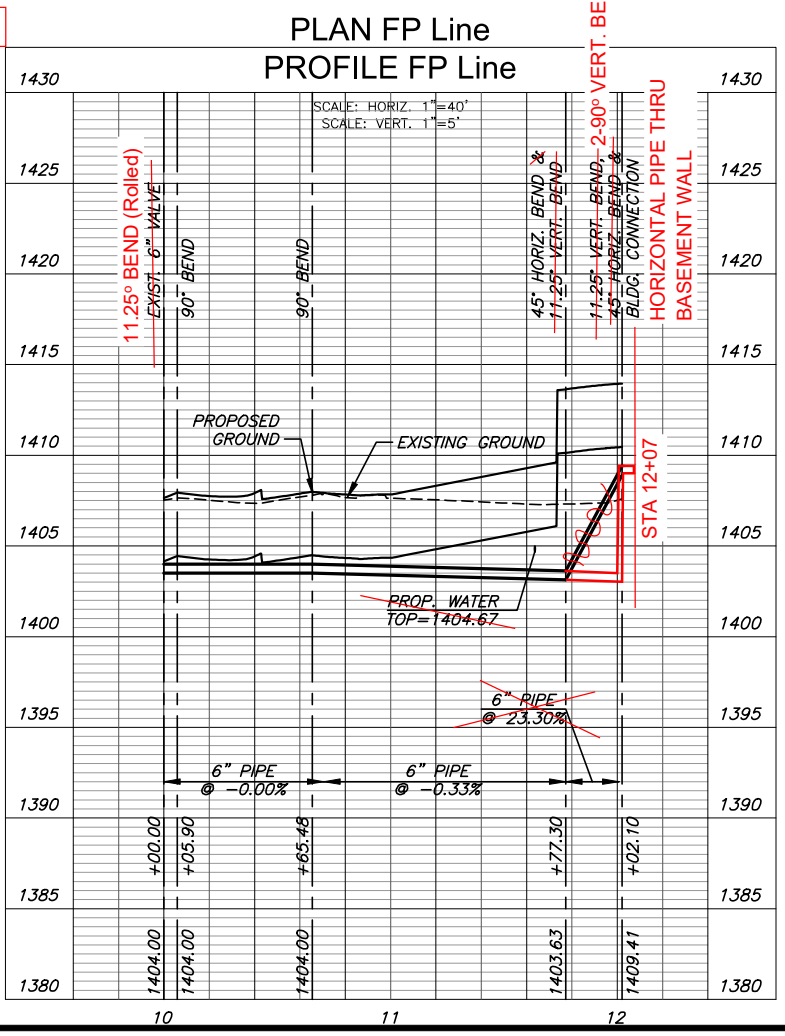
P:\PROJECTS\2024\20240101084\_GLMV\_VSU\ATF LABRATORY\00 24084-CAD\SHOTS\05 CIVIL\WTRPP\FP LINE.DWG  
 PLOTTED Thursday, December 12, 2024 @ 03:09PM



**NOTE:**

- CONTRACTOR TO VERIFY LOCATION AND ELEVATION OF EXISTING WATER LINE PRIOR TO CONSTRUCTION.
- DOMESTIC LINE AND FIRE PROTECTION LINE MUST BE INSTALLED IN SEPARATE TRENCHES PER KDHE REQUIREMENTS.
- CONTRACTOR TO USE RESTRAINED JOINT PIPING WHEN THRUST BLOCKING MAY NOT BE PERMISSIBLE

**NOTE:**  
 As-Built Northings (N) & Eastings (E) are reported in the same Horizontal Datum, as presented on the Title Page of this Plan Set.  
 Elevations: NAVD88 (GeoGrid 18).  
 Survey Shots By: Baughman Company, P.A.



**NOTES:**

- Existing 6" Fire Line Not Drawn to Scale from Point **A** to Point **B**.
- At North end, 6" Fire Service Pipe installed 8" to 12" below and 2' to 3' offset from 4" Domestic Water pipe.
- 6" DICL Pipe thru Basement Wall had a "Link Seal" installed with Non-Shrink Grout.
- General Contractor had hole cored thru basement wall indicating location for Fire Protection Water Line to enter building.
- Remote FDC = Not Part of this PPW.
- 6" Valve NOT installed at STA 10+00. This is acceptable to MKEC Design Engineer.
- Fire Service / Protection Water Line was Pressure Tested from Point A to Sta 12+02 and PASSED.
- Tracer Wire ran from Sta 10+00 to outside Basement Wall.



PRIVATE WATER DISTRIBUTION SYSTEM IMPROVEMENTS  
**ATF FORENSIC GSI LAB**  
 WICHITA STATE UNIVERSITY

FP LINE		
PROJECT NO.	2024-016846PPW	
SCALE	1"=40'	
DRAWN	DESIGNED	CHECKED
BJL	SPE	SPE
NO.	REVISION	DATE
SHEET NO. CU-101		
04 OF 10		

PLOTTED: Friday, December 13, 2024 @ 10:22AM

J:\PROJECTS\2024\240101084 - G.M.V. - WSU - ATFP - LABRATORY00 - 24084 - CAD\SHS\505 CIVIL\WTRP\DW\DW\WTR.DWG



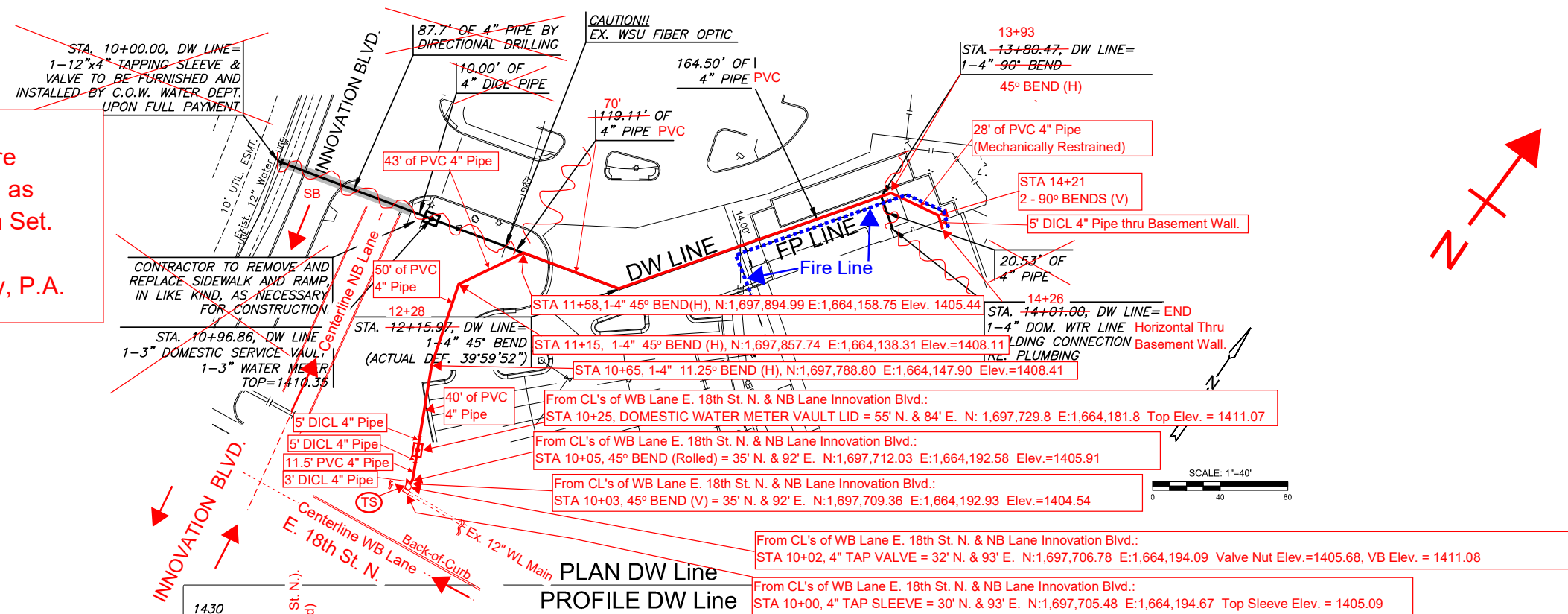
PRIVATE WATER DISTRIBUTION SYSTEM IMPROVEMENTS  
**ATF FORENSIC GSI LAB**  
WICHITA STATE UNIVERSITY

DW LINE		
PROJECT NO.	2024-016846PPW	
SCALE	1"=40'	
DRAWN	DESIGNED	CHECKED
BJL	SPE	SPE
NO.	REVISION	DATE
SHEET NO. CU-102		
05 OF 10		

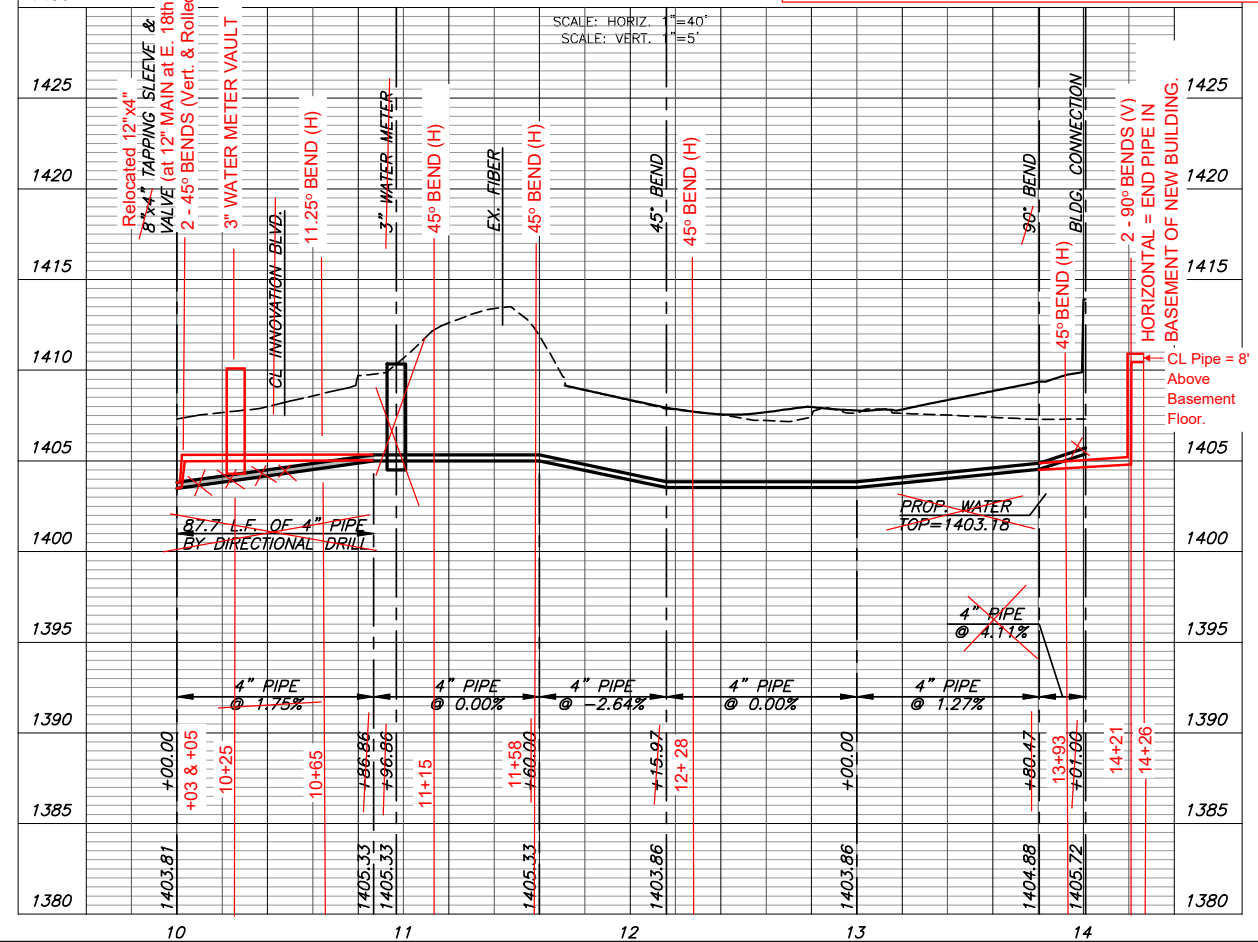
**NOTE:**  
As-Built Northings (N) & Eastings (E) are reported in the same Horizontal Datum, as presented on the Title Page of this Plan Set.  
Elevations: NAVD88 (GeoGrid 18).  
Survey Shots By: Baughman Company, P.A.

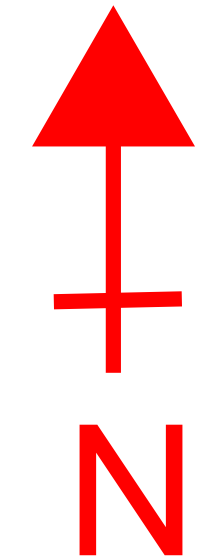
- NOTE:**
- CONTRACTOR TO VERIFY LOCATION AND ELEVATION OF EXISTING WATER LINE PRIOR TO CONSTRUCTION.
  - DOMESTIC LINE AND FIRE PROTECTION LINE MUST BE INSTALLED IN SEPARATE TRENCHES PER KDHE REQUIREMENTS.
  - CONTACT CHRIS STONE AT (316)268-4641 FOR REQUIRED CONNECTION, METER, AND SERVICE FEES.

- NOTES:**
- New Alignment (STA 10+00 to 11+58) Due to Conflict with Existing Storm Sewer Pipe.
  - New Alignment = Not to Scale.
  - As of June 2, 2025, Domestic Service Vault now contains two (2) - 4" Valves and Octave Water Meter, installed by City of Wichita.
  - 4" Domestic Water Line tested outside of building, then pipe installed thru basement wall.
  - General Contractor had hole cored thru basement wall indicating revised location for Domestic Water Line to enter building.
  - At North end, 4" Domestic Pipe installed 8" to 12" above and 2' to 3' offset from 6" Fire Line pipe.
  - See Sheet 7 for Plan View of Project Site and 4" Domestic Water Line.
  - Domestic Water Line thru Basement Wall was sealed.
  - Tracer Wire ran from TAP to Outside Basement Wall.



- LEGEND:**
- TS = Test Station.
  - NB = Northbound.
  - WB = Westbound.
  - SB = Southbound.
  - (H) = Horizontal.
  - (V) = Vertical
  - E = East.
  - N = North.
  - CL's = Centerlines
  - DICTL = Ductile Iron Cement Lined.
  - N: = Northing.
  - E: = Easting.





NOT TO SCALE

**PLAN VIEW**

WICHITA STATE UNIVERSITY -  
ATF FORENSIC GSI LAB  
DOMESTIC WATER LINE SHOWN  
COW PROJECT NO.: 2024-016846 PPW

**AERIAL VIEW**

**SHEET NO. 7**