

# GENERAL NOTES:

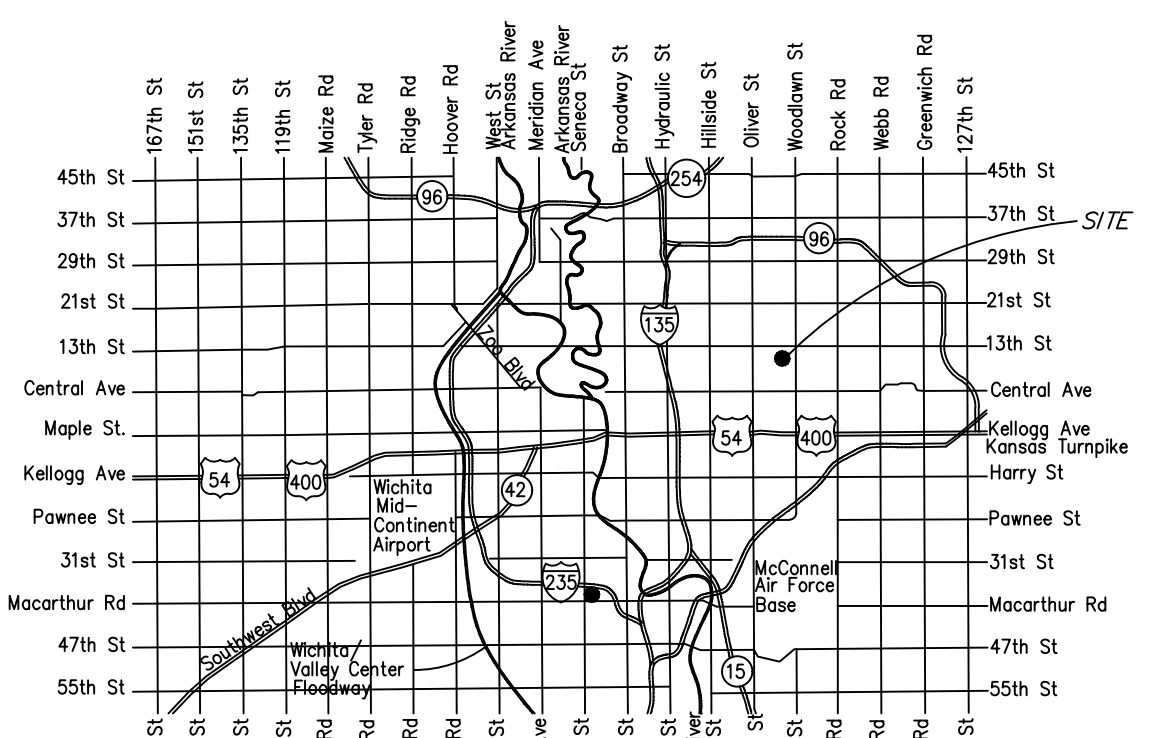
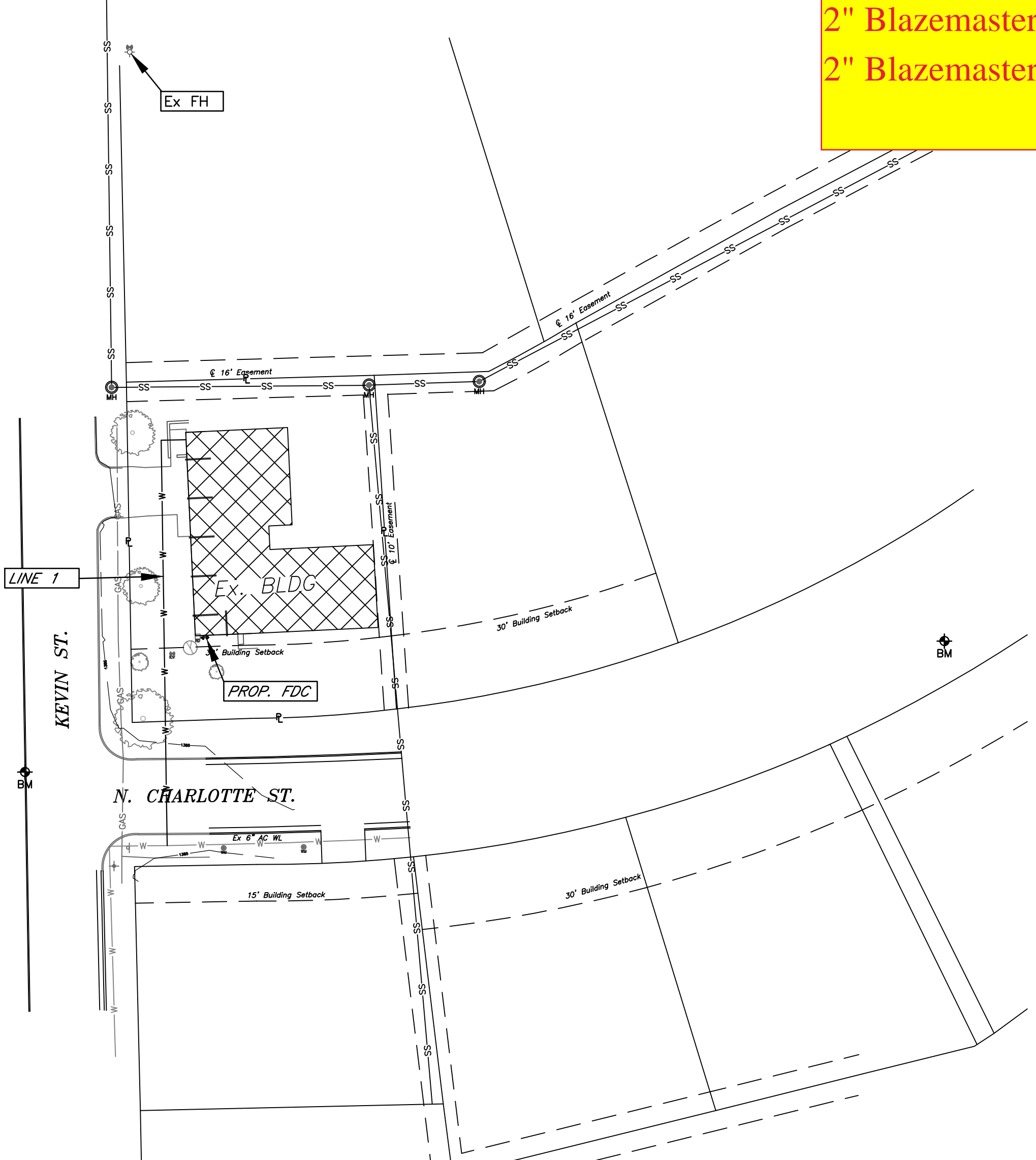
- The Contractor shall comply with all applicable safety regulations. All construction shall be completed following current City Standard Specifications and Special Provisions.
- Contractor will be required to provide notice to utility companies a minimum of seventy-two (72) hours prior to any excavation, as follows:  
*Kansas One-Call 687-2470*  
  
The Contractor must notify the following in case of an emergency:  
AT&T 1-800-246-8464  
Black Hills Energy 1-800-694-8989  
City of Wichita Water & Sewer 1-316-219-8821  
City of Wichita Stormwater 1-316-268-4090  
City of Wichita Traffic 1-316-268-4034  
Cox Communications 1-888-249-3530  
Kansas Gas Service 1-888-482-4950  
Westar Energy 1-800-544-4857
- Utility service lines, poles, etc. are to be adjusted as necessary by others prior to construction unless the plans specifically call for their adjustment by the Contractor or unless the plans specifically identify a utility to be adjusted by its owner during construction. Existing utilities and their location, as shown on the plans, represent the best information obtainable for design. The Contractor will be required to work around existing utilities within the right-of-way which do not conflict with proposed construction.
- Rubble from the removal of miscellaneous structures and excess excavation which is to be wasted shall be disposed of on sites to be provided by the Contractor. These sites shall be approved by the Engineer as to suitability, appearance and site location. Locations, in the opinion of the Engineer, that will leave an unsightly appearance will not be approved. All disposal sites must be approved by the Kansas Department of Health and Environment. Material either stockpiled or disposed of in a flood plain will require a Kansas State Board of Agriculture permit. Any material dumped in waters of the United States or wetlands is subject to U.S. Corps. of Engineers permitting regulations. Any material buried or stockpiled beyond approved construction limits will require additional archaeological investigations unless buried in a previously approved borrow location.
- Trees and shrubs in public right-of-way which are in direct conflict with proposed new construction shall be removed by the Contractor with the City Engineer's approval. Trees and shrubs which are not in direct conflict with proposed new construction shall be saved and protected from damage.
- The Contractor shall give all property owners and/or tenants of developed property adjoining the construction of this project a minimum of ten (10) days notice prior to start of construction.
- The Contractor shall be responsible for preserving property irons. The Contractor will be required to re-establish any property irons which are damaged or destroyed by his construction operations. Such irons shall be re-established by a licensed land surveyor in accordance with state laws.
- The Engineering Division shall field locate water valves one time during construction when requested by the Contractor. It shall be the Contractor's responsibility to preserve such field locations during the construction process. Water valves, valve boxes or fire hydrants damaged during construction shall be repaired by Contractor at his own expense. Valve boxes and water meters within the project limits shall be adjusted to match final grades by the contractor.
- The Contractor shall notify the consultant engineer and Dawnita Reinhardt at 316-650-0740 with the City of Wichita with the anticipated construction start date and notify them of project completion. Staking and inspection for this project will be the responsibility of the Contractor.
- If traffic will be impacted by construction, a traffic control plan must be submitted and approved by the City Traffic Engineer, Mike Armour at [Traffic@wichita.gov](mailto:Traffic@wichita.gov) before construction can begin. The Contractor shall be responsible for all traffic control measures to facilitate construction. All construction zone markings and signage shall conform to the latest version of the Manual on Uniform Traffic Control Devices (MUTCD) as published by the US Dept. of Transportation, Federal Highway Administration. All costs associated with construction markings and signage shall be the Contractors responsibility.
- All elevations shown are NAVD 88.
- All areas disturbed during construction that will not be under proposed pavement shall be restored to match existing conditions.

- Any sidewalk, drive approach, curb, or street pavement removed to construct project must have a pavement cut permit and be replaced by the City contractor. Permits can be obtained by calling 316-268-4501 or 316-268-4480.
- All applicable fees (tap, equity, in lieu of & main benefit) must be paid before any work on this project can commence.
- City maintenance of water mains ends at right-of-way or easement line or within two feet of vault.
- Opening and closing of water valves shall be done slowly to prevent damage to the water distribution system from water hammer. All valves closed by the contractor must be reopened as new construction permits. The project inspector must ascertain that any valve closed by the Contractor is reopened. The contractor will be permitted to operate water valves only when the project inspector assigned to the project is present.
- The Contractor shall lay a Tracer Wire and Set Test Stations along all water pipe installed in accordance with City Specifications and Tracer Wire Detail on a detail sheet WL-101, cost is subsidiary to pipe installation.
- The contractor shall provide materials for temporary blowoff of waterlines. Connections to the existing waterline(s) shall be made with clean, swabbed pipe and flushed upon completion of tie-ins.
- Requests for short term water interruptions shall be made to the City Water Distribution Division and will be subject to their approval. The Contractor shall give written notice to any property owner, business, and/or tenants that will have water service interrupted at least 5 days in advance. Such notifications should indicate the time and date that the water will be turned off and when the service will be restored. No business, property owner, and/or tenants shall be without water service for more than 8 hours. Proposed tie in locations which will affect water service to property owners shall be preformed during non-peak hours.
- The Contractor must schedule the connections to the existing main with the City such that there is a minimum disruption of service. Connections shall be made during periods of low water usage. The Contractor shall submit his proposed schedule for completing work for City approval at least 10 days prior to beginning construction.
- Deflections at pipe joint or couplings shall not exceed the pipe manufactures recommended maximum. Where deflections are greater than the maximum allowed, the contractor shall utilize fittings.
- Any existing joint exposed during excavation shall be replaced if within four feet of proposed joint.
- Valves 12 inch and larger are to be operated by the City Water Distribution Division, 48 hours of advance notice is required with the water Dispatch at 316-291-8921.
- All wet taps shall be installed by the City of Wichita. The Contractor will reimburse the City for tapping fees prior to tap being made. Unless noted on plans.
- The Contractor shall protect from damage and support existing utilities through construction as approved by the utility owner and the Engineer at the contractors expense.
- Contractor shall limit the extent of trench openings overnight and weekends to less than 50 feet.
- Fire Line inspections may be scheduled by calling 316-650-0740
- Maintain a minimum of 10-foot horizontal separation between all water lines (mains, services, and fire hydrants) and all sanitary sewer lines (mains, services, and manholes). All separation distances are to be measured from edge-to-edge at the closest point.
- Maintain a minimum of 2-foot vertical separation between all water lines (mains and services) and all gravity sanitary lines (mains, services, and manholes) at crossings. All separation distances are to be measured from edge-to-edge, at the closest point.
- Maintain a minimum of 2-foot vertical separation between all water lines (mains and services) and all pressurized sanitary sewer lines (force mains and services) at crossings. Waterlines must always be placed above pressurized sanitary sewer lines where they cross. All separation distances are to be measured edge-to-edge, at the closest point.

# FIRE LINE to serve LOT 4, REPLAT OF BLOCK A, MCEWEN 4TH ADDITION 1103 N CHARLOTTE ST CITY OF WICHITA, KANSAS

Paul Gunzelman, P.E. City Engineer  
2024-032136 PPW (54030980)

Materials  
2" Blazemaster CPVC  
2" Blazemaster Fittings



## Vicinity Map Sheet Index

- 1.0 Title Sheet
- 2.1 Std. Wtr. Ass'y Details
- 2.2 Misc. Wtr. Details
- 3.0 Plan & Profile Line 1
- 4.0 Erosion Control Plan
- 4.1-4.5 Erosion Control Details
- 5.0 Plat (Reference Only)

APPROVED AS NOTED  
BY WICHITA PUBLIC WORKS  
ENGINEERING DIVISION  
& BY WICHITA FIRE DEPARTMENT

Engineering approved by Shawn Mellies on this day  
the 16th of December, 2024

Utilities approved by Greg Lolley on this day  
the 16th of December, 2024

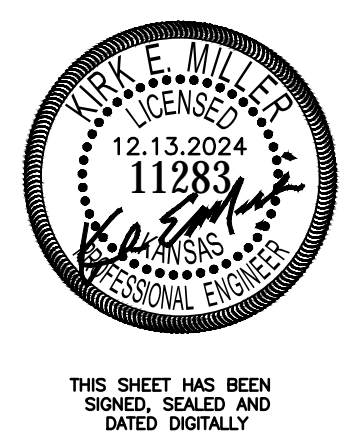
Fire Dept. approved by Jose Ocaida on this day  
the 16th of December, 2024

NOTE TO CONTRACTORS

Public Property:  
Inspection and testing for the waterline is to be provided by a Licensed Consulting Engineering Firm under contract with the Owner/Developer. Said inspection is to be in accordance with the City of Wichita standard construction engineering practices and certified by a Professional Engineer Licensed in the state of Kansas. No work shall be performed in dedicated easements or public right-of-way by the Contractor without such inspection nor shall any work be commenced without written authorization by City Engineering. All Construction and Materials shall comply with the City or Wichita Specifications and Standards and Special Provision (on file and available in the City Engineer's Office) or on the City's Website.

Private Property:  
Installation and testing for the fire protection line is to be performed by a City of Wichita licensed fire protection contractor in accordance with the fire codes as adopted by the City of Wichita. All material and construction practices for the fire protection line shall comply with the fire codes as adopted by the City of Wichita (available from the City of Wichita Fire Department). The Contractor shall not commence work without notification and approval of the Wichita Fire Department. Inspection of the fire protection line is to be provided by a licensed Engineering Firm under contract with the Owner/Developer and the Fire Department. The contractor shall not start work until the project inspector is assigned to the project and present on the site. Any work done without inspection will be required to be uncovered for inspection.

An approved copy of these plans signed by City staff are required on-site.



## Benchmarks

BM#1: Magnail in Conc. Joint located on the West side of Kevin St. Located approximately 44 ft West and 20.3 ft South of the Southwest corner of Lot 4, Replat of Block A, McEwen 4th Addition, Wichita, Sedgwick County, Kansas. Elev: 1384.57 NAVD88

BM#2: Magnail in Conc. Joint located on the South side of Charlotte St. Located approximately 224.20 ft East and 27.8 ft North of the Southeast corner of Lot 4, Replat of Block A, McEwen 4th Addition, Wichita, Sedgwick County, Kansas. Elev: 1388.42 NAVD88

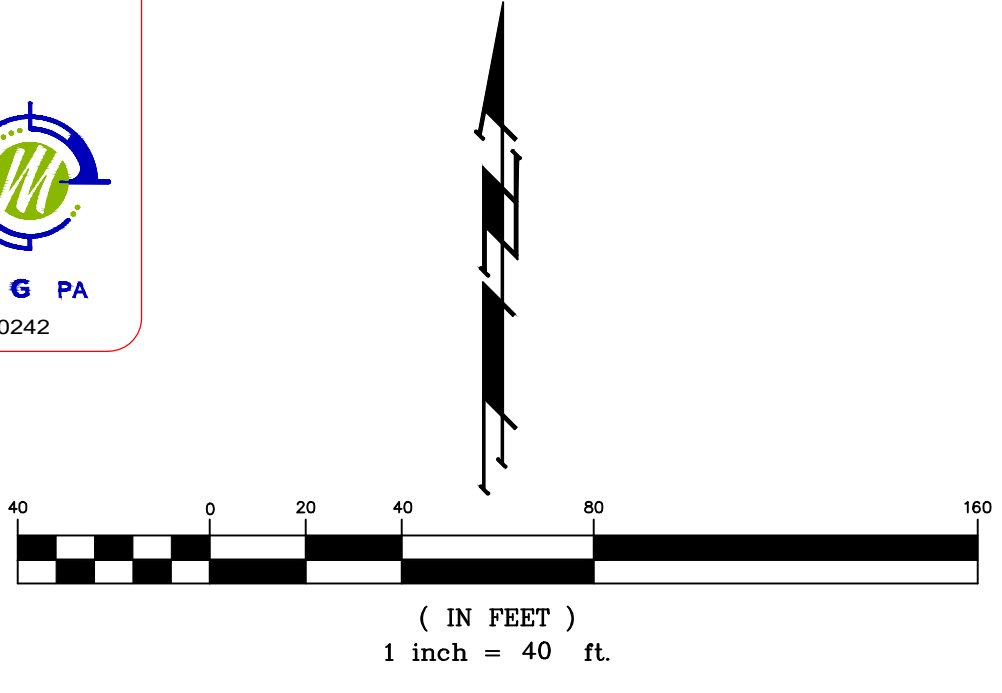
**AS-BUILTS**

Contractor: McCullough Excavation  
Project Inspector: Pablo Oden

Date: 2/05/2025

117 E. Lewis, Wichita, KS 67202 (316)264-0242

NOVEMBER 2024

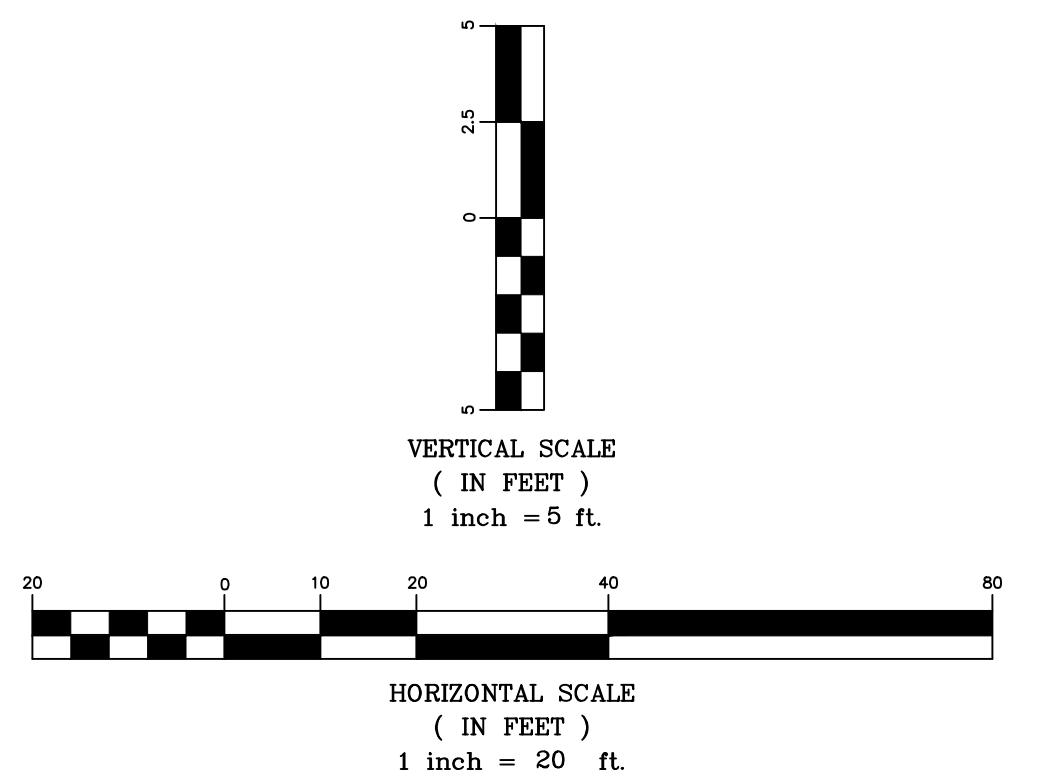


117 E. Lewis, Wichita, KS 67202 (316)264-0242



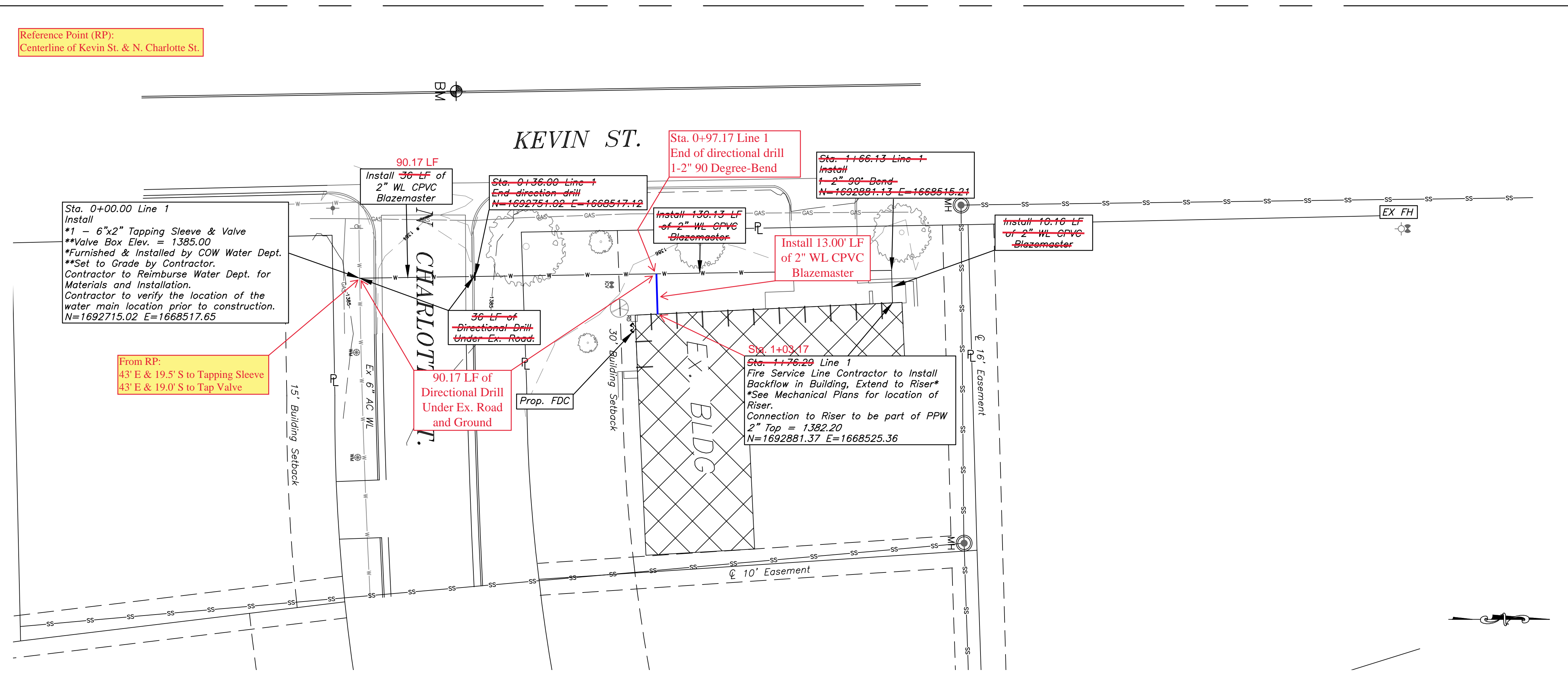
THIS SHEET HAS BEEN  
SIGNED, SEALED AND  
DATED DIGITALLY

FIRE RATED LINE STARTS 5'  
OUTSIDE THE BUILDING

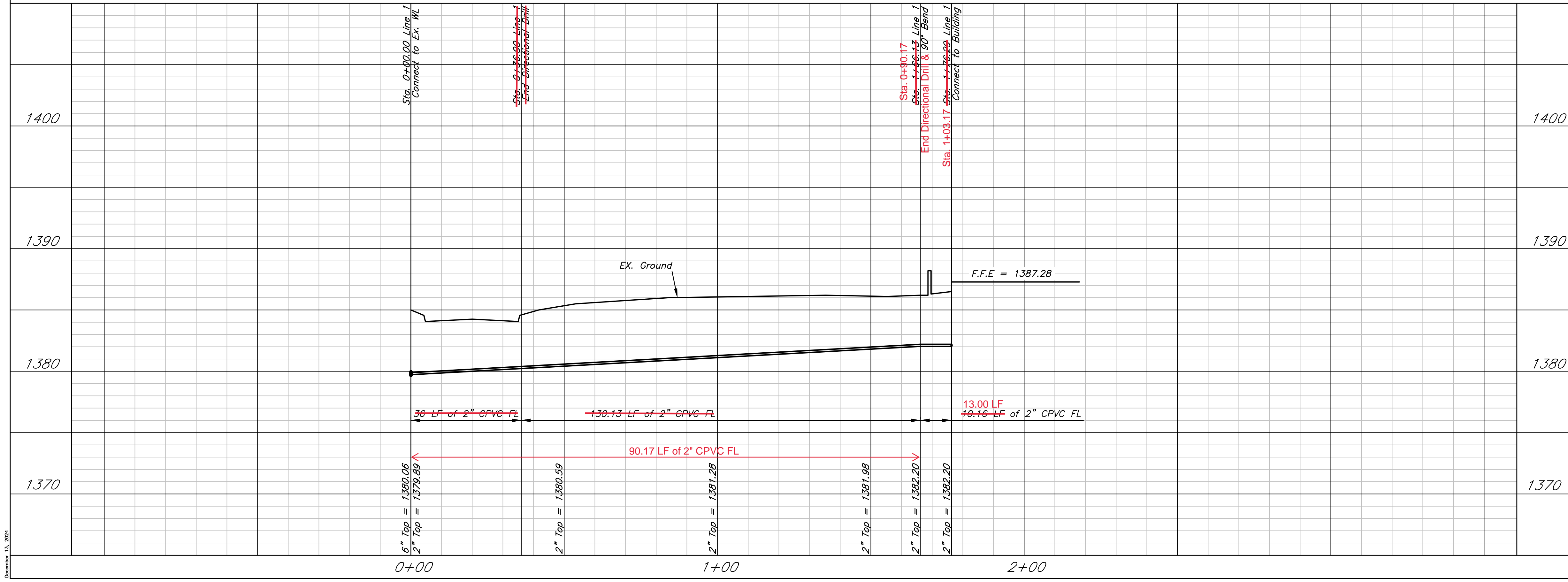


Kevin & Charlotte FL  
WL Plan & Profile - Line 1  
Wichita, Kansas

<b>KEMILLER</b> ENGINEERING PA 117 E. Lewis, Wichita, KS 67202 (316)264-0242	PROJECT NUMBER PPW-2024-032136		SHEET <b>2.0</b>
	KEM NO. 24150	FILE DATE 11/2024	
DESIGN KM	DRAWN PG	REVISED	

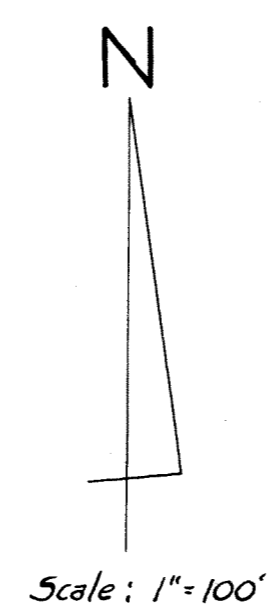


Line 1



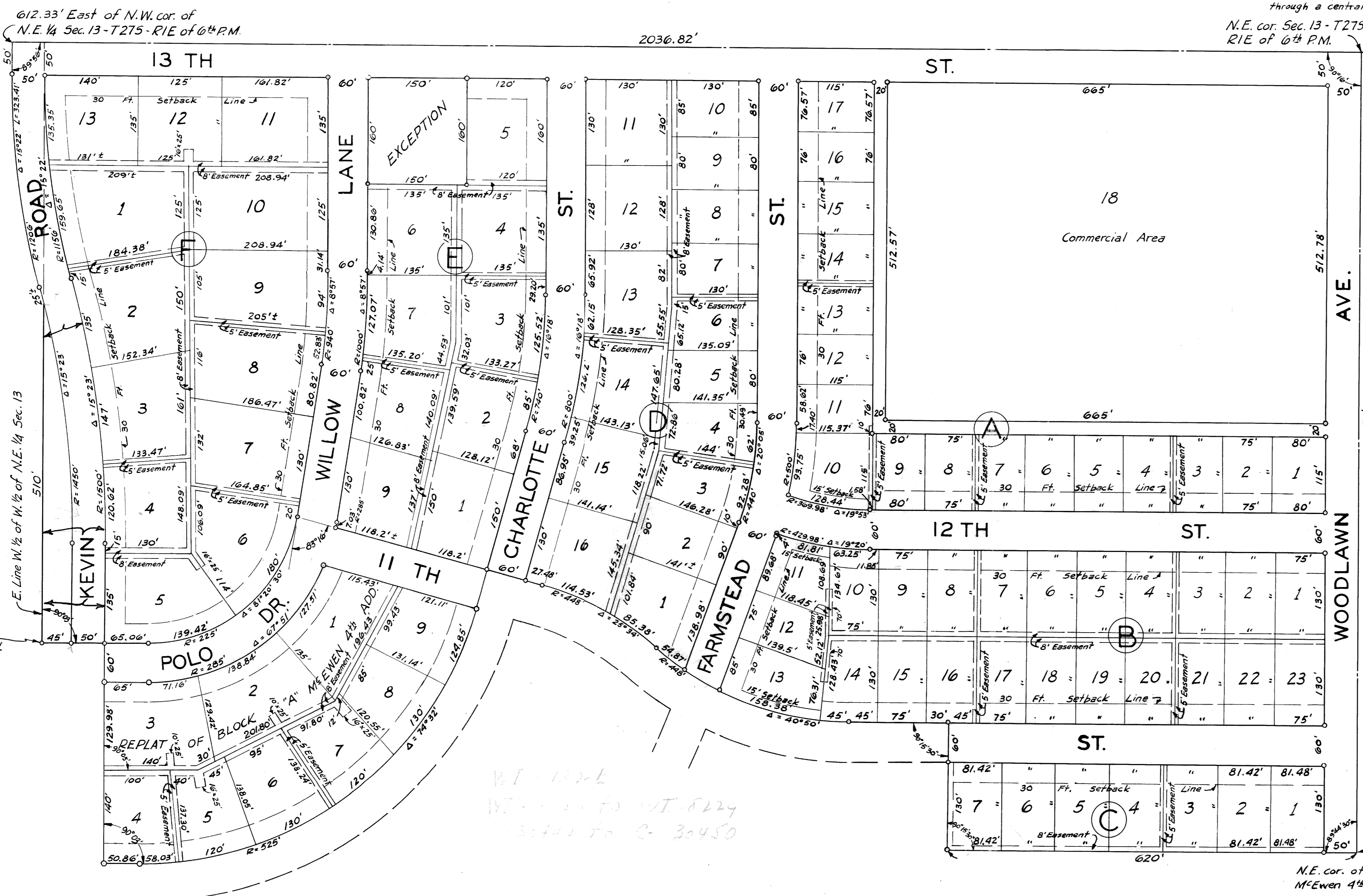
December 13, 2024

# MC EWEN 5 TH ADDITION AND REPLAT OF BLOCK "A" MC EWEN 4 TH ADDITION TO WICHITA, SEDGWICK COUNTY, KANSAS



State of Kansas } 55  
County of Sedgwick } ss

I, Don C. Moehring, C.E., a Civil Engineer in said State and County, do hereby certify that I have surveyed and platted McEwen 5th Addition and Replat of Block "A", McEwen 4th Addition to Wichita, Sedgwick County, Kansas, into Blocks, Lots, Streets, a Drive, Roads, an Avenue, and an Alley, the same being accurately set forth on the accompanying plat and described as follows: Beginning at the Northeast corner of Section 13, Township 21S, Range 1E of the 6th P.M., thence West along the North Line of said Section 13, a distance of 2036.82 feet to a point 612.33 feet East of the Northwest corner of the Northeast 1/4 of said Section 13, a distance of 50 feet to the P.C. of a curve to the left having a radius of 1206 feet; thence along said curve to the left and through a central angle of 15°22', a distance of 323.41 feet to the R.C. of a curve to the right having a radius of 1450 feet; thence along said curve to the right a distance of 25 feet more or less to a point in the East Line of the West 1/2 of the West 1/2 of the Northeast 1/4 of said Section 13; thence South along the East Line of the West 1/2 of the West 1/2 of the Northeast 1/4 of said Section 13, a distance of 510 feet more or less to the Northeast corner of McEwen 2nd Addition to Wichita, Sedgwick County, Kansas; thence East along the North Line of "Bolo Drive" as platted in said McEwen 2nd Addition extended Eastward, a distance of 160 feet to the P.C. of a curve to the left having a radius of 225 feet; thence along said curve to the left and through a central angle of 81°20'30", a distance of 319.42 feet; thence South-easterly along the North Line of "11th Street" as platted in McEwen 4th Addition to Wichita, Sedgwick County, Kansas; the tangent of said last described curve forming an included angle with said North Line of 119°51', a distance of 384.10 feet to the P.C. of a curve to the right having a radius of 448 feet; thence along said curve to the right and through a central angle of 25°34', a distance of 199.91 feet to the P.C. of a curve to the left having a radius of 448 feet; thence along said curve to the left and through a central angle of 40°50', a distance of 319.28 feet; thence East along the tangent to said curve a distance of 150 feet; thence South at an included angle of 90°15'30", a distance of 190 feet; thence East at an included angle of 90°15'30", a distance of 620 feet to the Northeast corner of McEwen 4th Addition to Wichita, Sedgwick County, Kansas; thence North along the East Line of said Section 13, a distance of 207.78 feet to the point of beginning; except the South 150 feet of the North 210 feet of the West 150 feet of the East 1500 feet thereof.



N.E. cor. Sec. 13 - T27S - R1E of 6th P.M. Point of Beginning

And Replat of Block "A" McEwen 4th Addition to Wichita, Sedgwick County, Kansas.  
Lot 4, Block "A" McEwen 4th Addition being owned by Frank R. Pigg and Norma Pigg, his wife; the balance of said above described tract being owned by McEwen Estates, Inc.

*Don C. Moehring, C.E.*  
Don C. Moehring, C.E., Consulting Civil Engineer

Know all men by these presents, that we, the undersigned property owners of the land as above set forth in the Civil Engineer's Certificate, have caused the same to be surveyed and platted into Blocks, Lots, Streets, a Drive, Roads, an Avenue, and an Alley, the same to be known as "McEwen 5th Addition and Replat of Block 'A', McEwen 4th Addition", Wichita, Sedgwick County, Kansas; the Streets, Drive, Roads, Avenue, and Alley are hereby dedicated to and for the use of the public and Easements as indicated on the accompanying plat for the construction and maintenance of public utilities, are hereby granted.

McEwen Estates Inc.

*Frank R. Pigg*  
Norma Pigg

*Patricia Z. McEwen*, President  
*Norma P. McEwen*, Secretary

State of Kansas } 55  
County of Sedgwick } ss

Be it remembered that on this 22nd day of March, 1956, before me, a Notary Public in and for said State and County came the McEwen Estates, Inc. by its President, Patricia Z. McEwen, and its Secretary, Owen C. McEwen, and Frank R. Pigg and Norma Pigg, his wife, to me personally known to be the same persons who executed the foregoing instrument of writing and duly acknowledged the same as their voluntary act and deed and the voluntary act and deed of said Corporation.

My Commission Expires: Sept. 12, 1956

*Leis Jensen*, Notary Public

This plat of "McEwen 5th Addition" and "Replat of Block 'A', McEwen 4th Addition" Wichita, Sedgwick County, Kansas, has been submitted to and considered by the City Planning Commission of the City of Wichita, Kansas, and is hereby transmitted to the Board of City Commissioners with the recommendation that such plat be approved as proposed.

Dated this 22nd day of May, 1956.

The City Planning Commission of the City of Wichita, Kansas.

Attest: *Thomas E. ...*, Secretary     *Eugene ...*, Chairman

Approved by the Board of City Commissioners this 22nd day of May, 1956.

*...*, Mayor  
*...*, City Clerk

Approved by the Board of County Commissioners this 21st day of MAY, 1956.

*...*, County Clerk

State of Kansas } 55  
County of Sedgwick } ss     15817

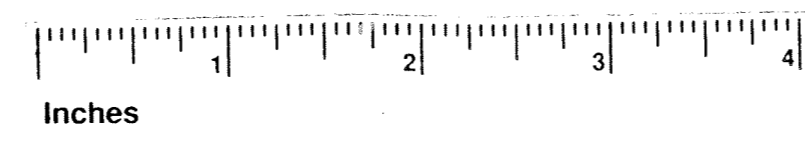
This is to certify that this instrument was filed for Records in the Register of Deeds Office this 22nd day of MAY, 1956 at 10:00 o'clock A.M. and is duly recorded.

*Lynn ...*, Register of Deeds  
*W. ...*, Deputy

Entered on Transfer Record this 22nd day of May, 1956.

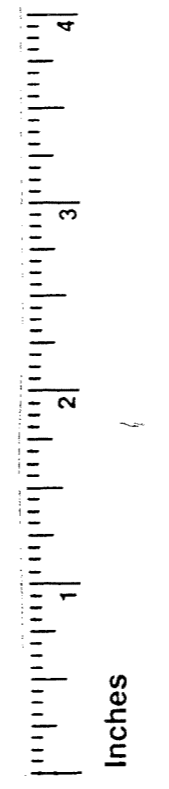
*...*, County Clerk

MC 2 5



This digital plat record accurately reproduces in all details the original plat filed with the Sedgwick County Register of Deeds. Digitized under the supervision of Register of Deeds Bill Meek by Sedgwick County Geographic Information Systems.

*Bill Meek*, Register of Deeds  
Digitized rendition of original signature



REST. COV. M371 P558  
RATIFICATION OF PLAT M460 P259