

- Ref. SE Cor. Sec. 3 T28S R1E = Sta. 10+00.00
1. Fnd. 1/2" iron pipe in thimble @ SE Cor.
  2. "X" cut in top curb 37.87' SSW
  3. "X" cut in top curb 38.60' SSE
  4. "X" cut in top curb 69.68' NE
  5. "X" cut in top curb 61.27' NW
  6. In  $\odot$  intersection Hillside & 31st Streets

- Ref. P.O.T. @ Sta. 29+87.26
1. Fnd. 1/2" pipe in thimble in Ctr. Hillside St. & E. Ross Prkwy.
  2. "X" cut in top curb Ctr. W. end island 24.25' E
  3. "X" cut in top curb 25.17' WNW
  4. "X" cut in top curb 57.94' NNW

- Ref. E 1/4 Cor. Sec. 3 T28S R1E = Sta. 36+51.32
- " $\Delta$ " = 0'19"10" Lt.
1. Fnd. 1/2" iron pipe in thimble @ E 1/4 Cor.
  2. Nail & shiner in light pole 40.61' SW
  3. "X" cut in top curb 39.72' WNW
  4. "X" cut in top curb 39.14' NW
  5. PK nail painted pink in Tel pole 41.23' SE
  6. Ctr. City of Wichita benchmark 71.90' SSE

- Ref. P.O.T. @ Sta. 39+57.62
1. Set cotton gin thimble @ P.O.T.
  2. Spike & washer in power pole 29.34' W
  3. "X" cut in top curb (BM #3) 43.93' SW
  4. "X" cut in top curb 34.60' NW

STATE	PROJECT NO.	YEAR	SHEET NO.	TOTAL SHEETS
KANSAS	87 N-0359-01	2006	3	61

- Ref. NE Cor. Sec. 3 T28S R1E = Sta. 64+42.98
1. Fnd. 1/2" iron pipe in thimble @ NE Cor.
  2. "X" cut in top curb 62.84' SE
  3. "X" cut in top curb 63.95' SW
  4. "X" cut in top curb 63.30' NW
  5. Ctr. City of Wichita bench mark 71.31' NE
  6. In  $\odot$  intersection Hillside & Pawnee Streets

Note: Saw cuts will be full depth. This shall not be paid for directly, but shall be considered Subsidiary to other items of the contract.

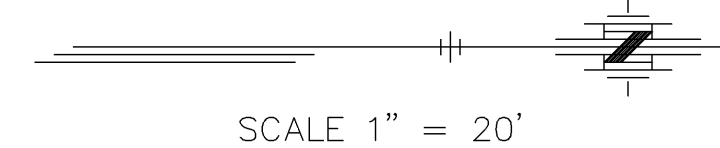
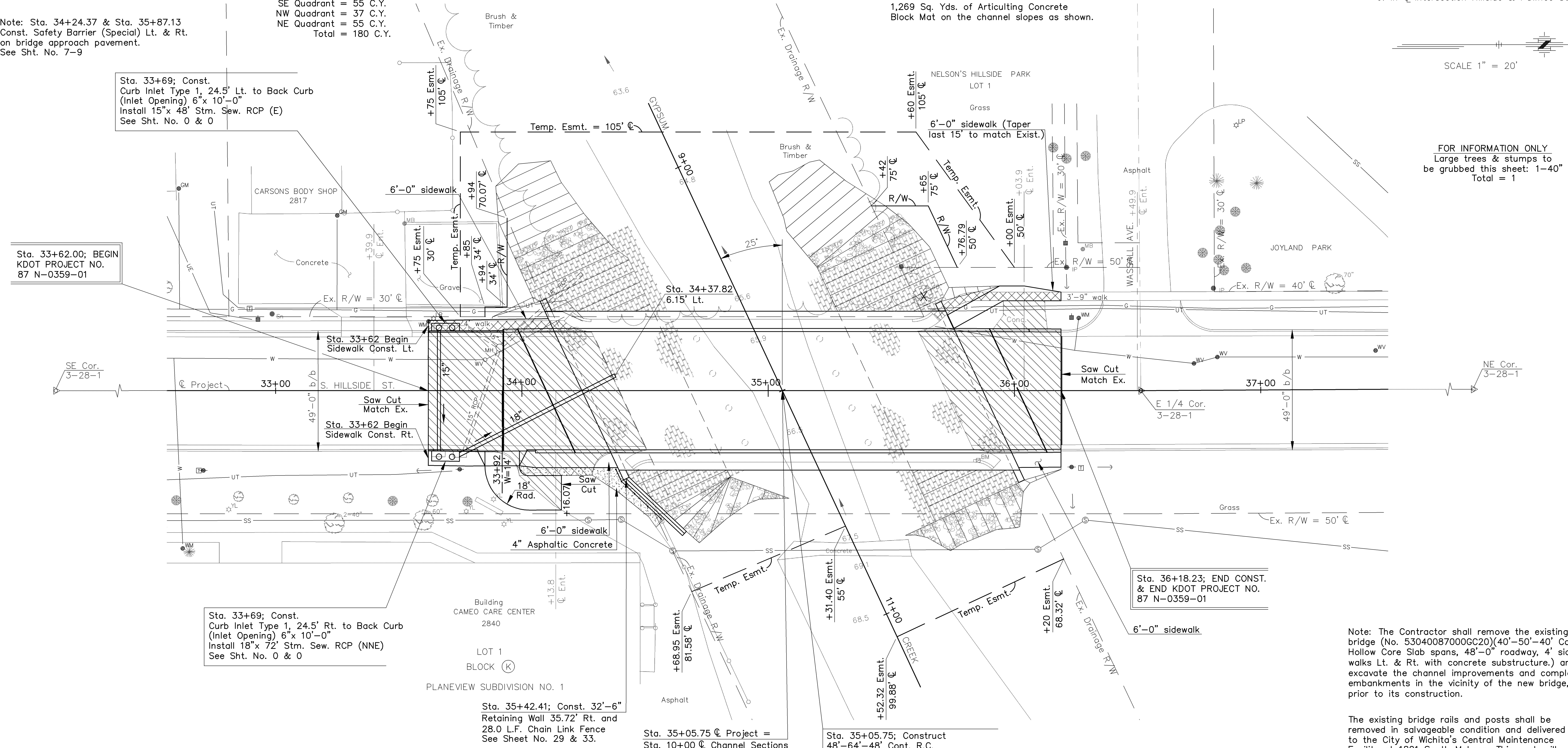
Note: The Contractor shall construct "Slope Protection (Riprap Stone) (Light 24") on the channel slopes as shown.

SW Quadrant = 33 C.Y.  
SE Quadrant = 55 C.Y.  
NW Quadrant = 37 C.Y.  
NE Quadrant = 55 C.Y.  
Total = 180 C.Y.

Note: Sta. 34+24.37 & Sta. 35+87.13 Const. Safety Barrier (Special) Lt. & Rt. on bridge approach pavement. See Sht. No. 7-9

Note: The Contractor shall construct 1,269 Sq. Yds. of Articulating Concrete Block Mat on the channel slopes as shown.

DATE	BY	REFERENCE NOTED	REFERENCE CHECKED



FOR INFORMATION ONLY  
Large trees & stumps to be grubbed this sheet: 1-40"  
Total = 1

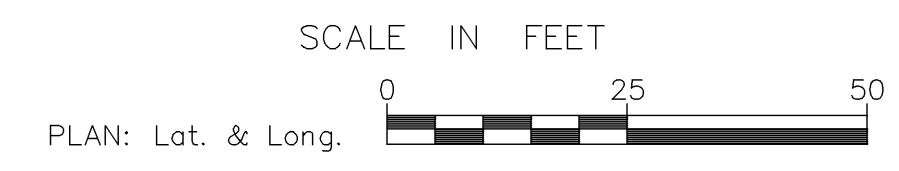
Drawn by: [Name]  
Plotted: [Name]  
File: j:\2004\proj\04-559\dwg\04-559T.dwg SCALE

**LEGEND**

	Removal of Existing Pavement.
	Removal of Existing Sidewalks.
	4" Asphaltic Concrete.

Sec. 2 T28S R1E

Note: All elevations shown on this project are based on USGS datum. City of Wichita standard disc at NE corner of bridge (BM #2 this project). Elev. = 1291.74



BM #1 - "X" cut in top curb 24.32' Lt. Sta. 30+39.91 Elev. = 1291.30	BM #2 - City of Wichita Std. disc in NE Cor. bridge 28.29' Rt. Sta. 35+85.31 Elev. = 1291.74	BM #3 - "X" cut in top curb 24.12' Lt. Sta. 39+21.13 Elev. = 1288.84
--	--	--

KANSAS DEPARTMENT OF TRANSPORTATION

**PLAN**

**HILLSIDE BRIDGE AT RANGE ROAD**

City of Wichita Sedgwick, Co.