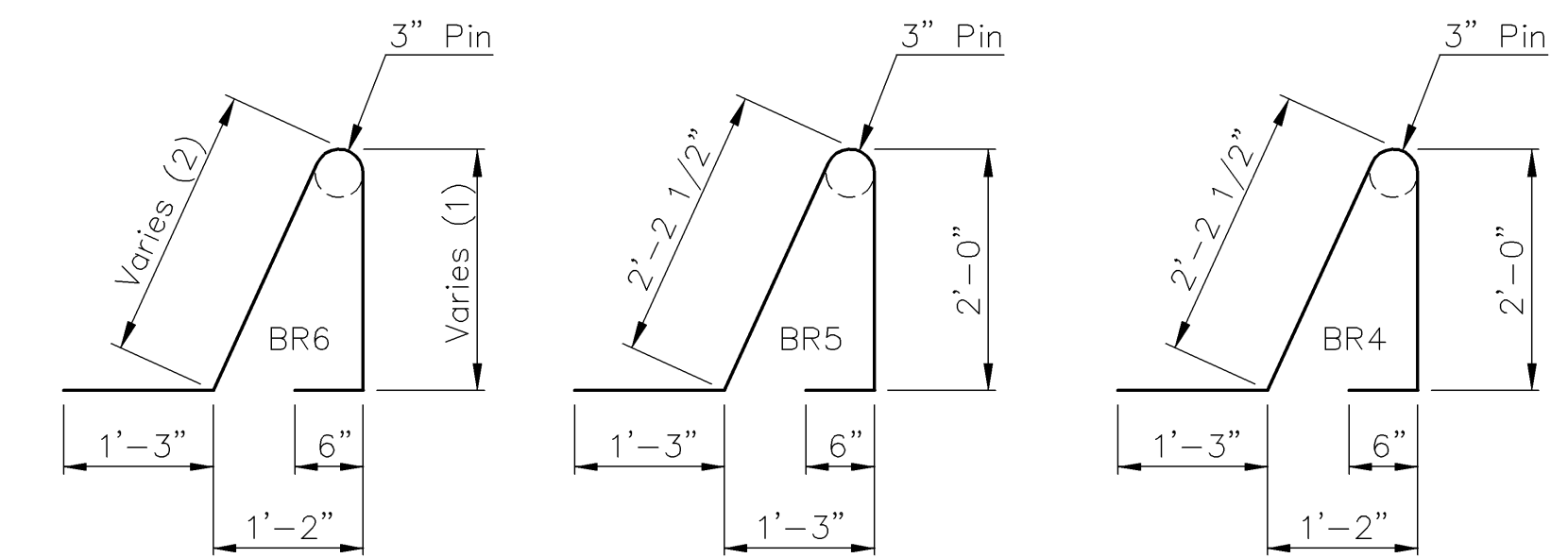
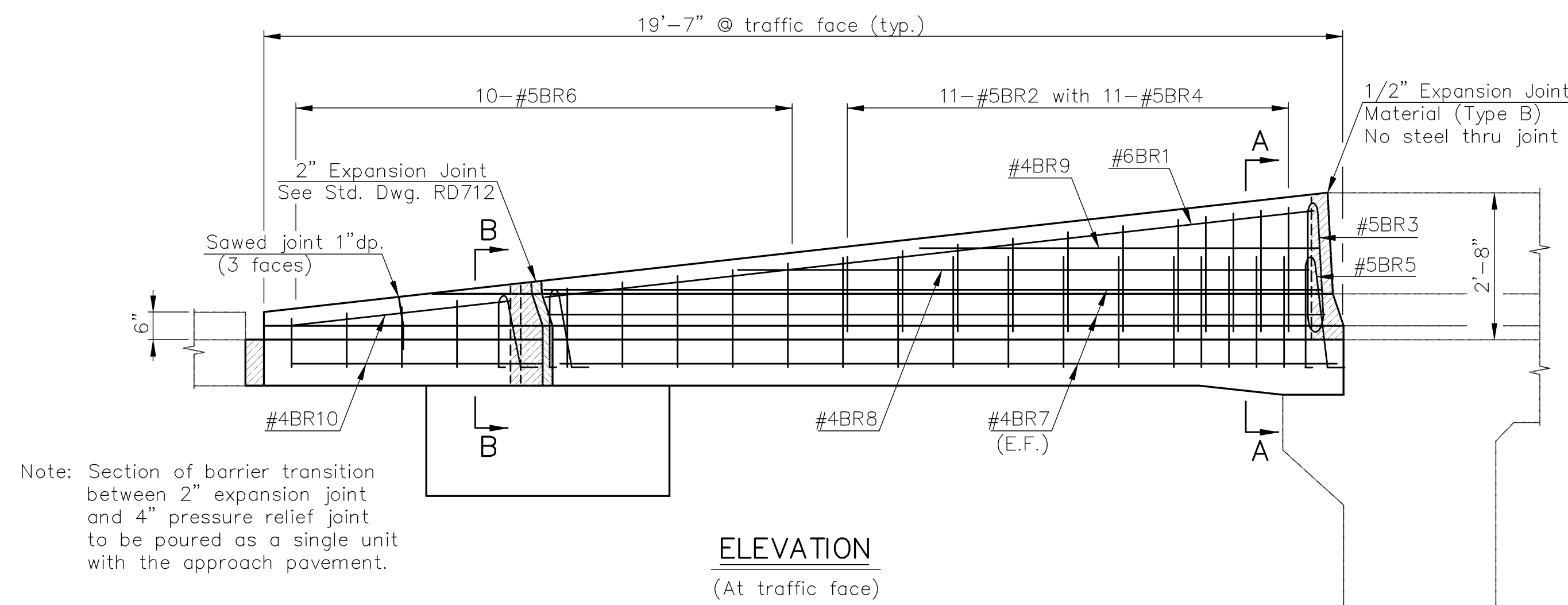
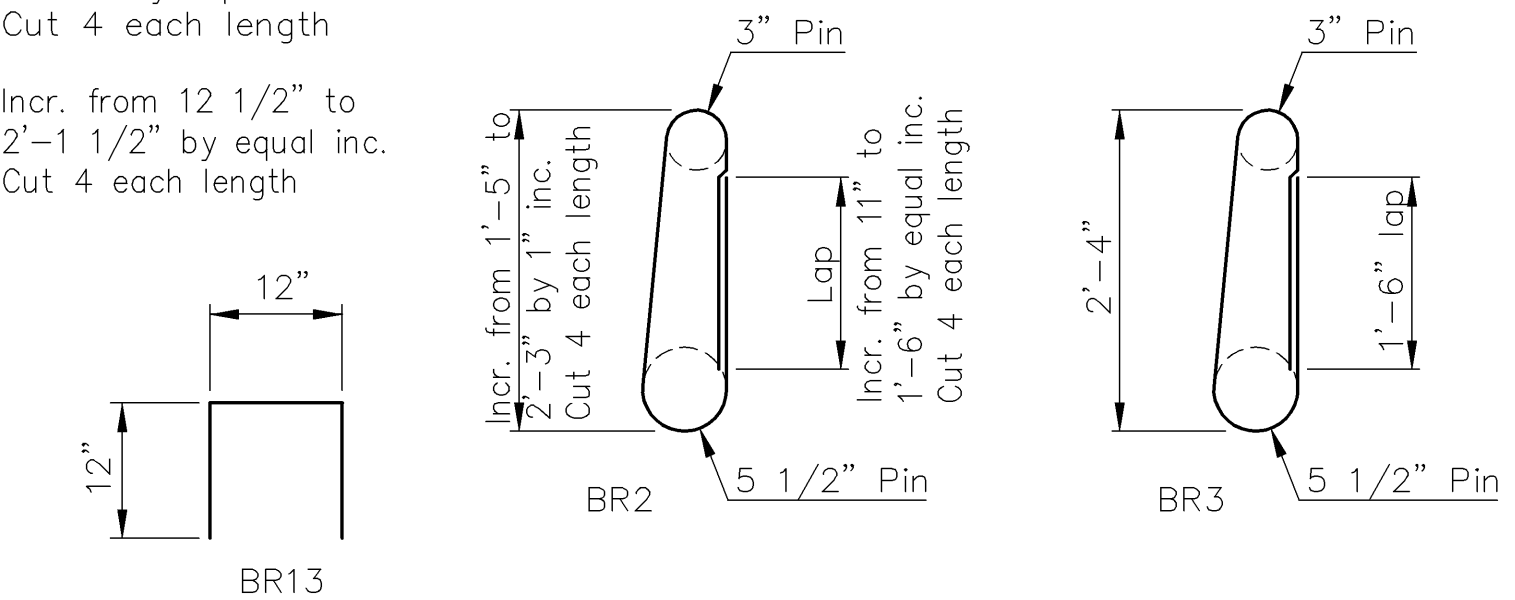


BILL OF REINFORCING STEEL							
STRAIGHT BARS				BENT BARS			
Mark	Size	No.	Length	Mark	Size	No.	Length
BR1	#6	4	14'-0"	BR2	#5	44	Varies
				BR3	#5	4	6'-8"
BR7	#4	28	13'-11"	BR4	#5	44	6'-0"
BR8	#4	4	11'-3"	BR5	#5	4	6'-0"
BR9	#4	4	7'-6"	BR6	#5	40	Varies
BR10	#4	16	4'-3"				
BR11	#4	4	27'-3"	BR13	#4	74	3'-0"
BR12	#4	4	18'-10"				

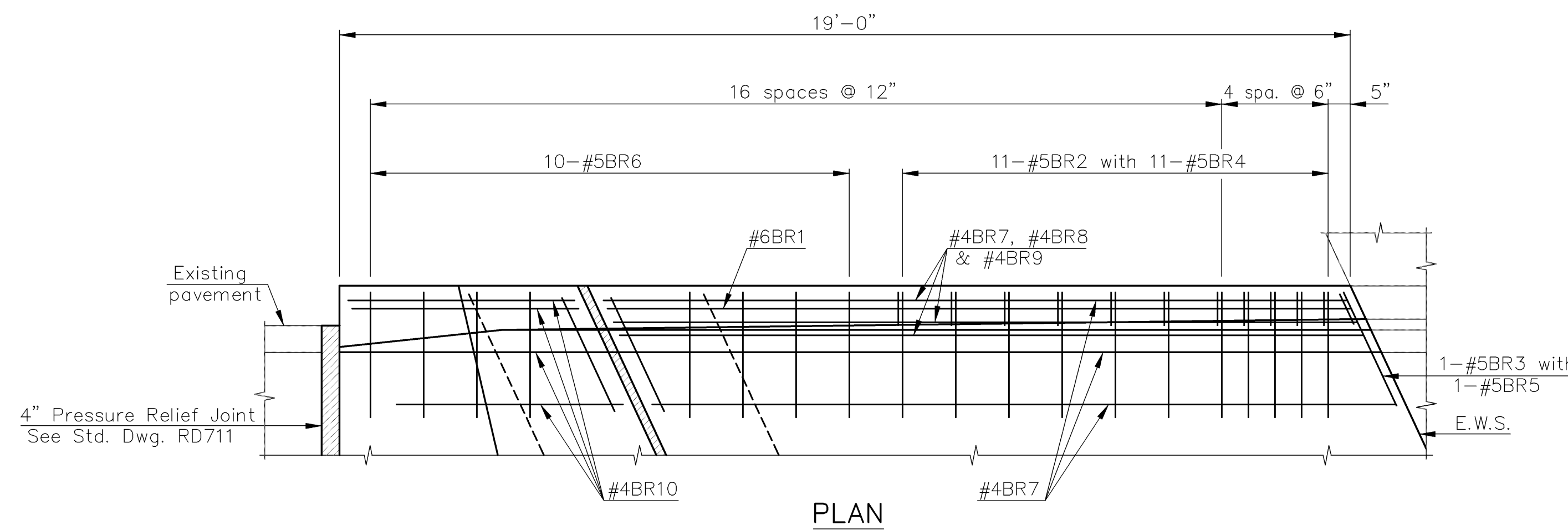
BENDING DIAGRAMS



- (1) Incr. from 11" to 1'-11" by equal inc. Cut 4 each length
- (2) Incr. from 12 1/2" to 2'-1 1/2" by equal inc. Cut 4 each length



Note: Section of barrier transition between 2" expansion joint and 4" pressure relief joint to be poured as a single unit with the approach pavement.



(All quadrants)

BILL OF MATERIALS	
Concrete Safety Barrier (Special)	123.1 Lin. Ft.
Grade 4.0 Concrete (AE)	5.1 Cu. Yds.
Reinforcing Steel (Gr. 60) (Epoxy Coated)	1,490 Lbs.

Note: Concrete and reinforcing steel are shown for information only.

GENERAL NOTES

Unit Stresses:
Concrete (Grade 4.0)(AE)(SW) $f'_c = 4,000$ psi
Reinforcing Steel $f_y = 60,000$ psi

Transition barrier rail shall be paid for as linear feet of Concrete Safety Barrier (Special) and includes all work and materials required to construct the transition barrier rail as shown on this sheet.

All concrete shall be Concrete (Grade 4.0)(AE)(SW). Bevel all exposed edges of the concrete with a 3/4" triangular molding, unless otherwise noted.

All reinforcing steel shall conform to the requirements of ASTM A615, Grade 60 and shall be epoxy coated as set forth in the special provisions. Bar supports shall be coated. Clearance from the face of concrete for all reinforcing steel shall be 2", unless otherwise noted.

All work and materials required for installation of expansion joints and pressure relief joints shall be subsidiary to this bid item.

See Std. Dwgs. RD711 and RD712 for details of joints.

PROJECT NO. 87 N-0359-01
TRANSITION BARRIER DETAILS
(N.E. & S.W. QUADRANTS)
HILLSIDE ST. BRIDGE OVER GYPSUM CREEK
STA. 35+05.75



DESIGNED	RSC	SCALE
DETAILED	DEG	DATE
QUANTITIES	SHEET	OF