

Ref. SE Cor. Sec. 3 T28S R1E = Sta. 10+00.00  
 1. Fnd. 1/2" iron pipe in thimble @ corner  
 2. "X" cut in top curb 37.87' SSW  
 3. "X" cut in top curb 38.60' SSE  
 4. "X" cut in top curb 69.68' NE  
 5. "X" cut in top curb 61.27' NW  
 6. In center intersection Hillside & 31ST Streets

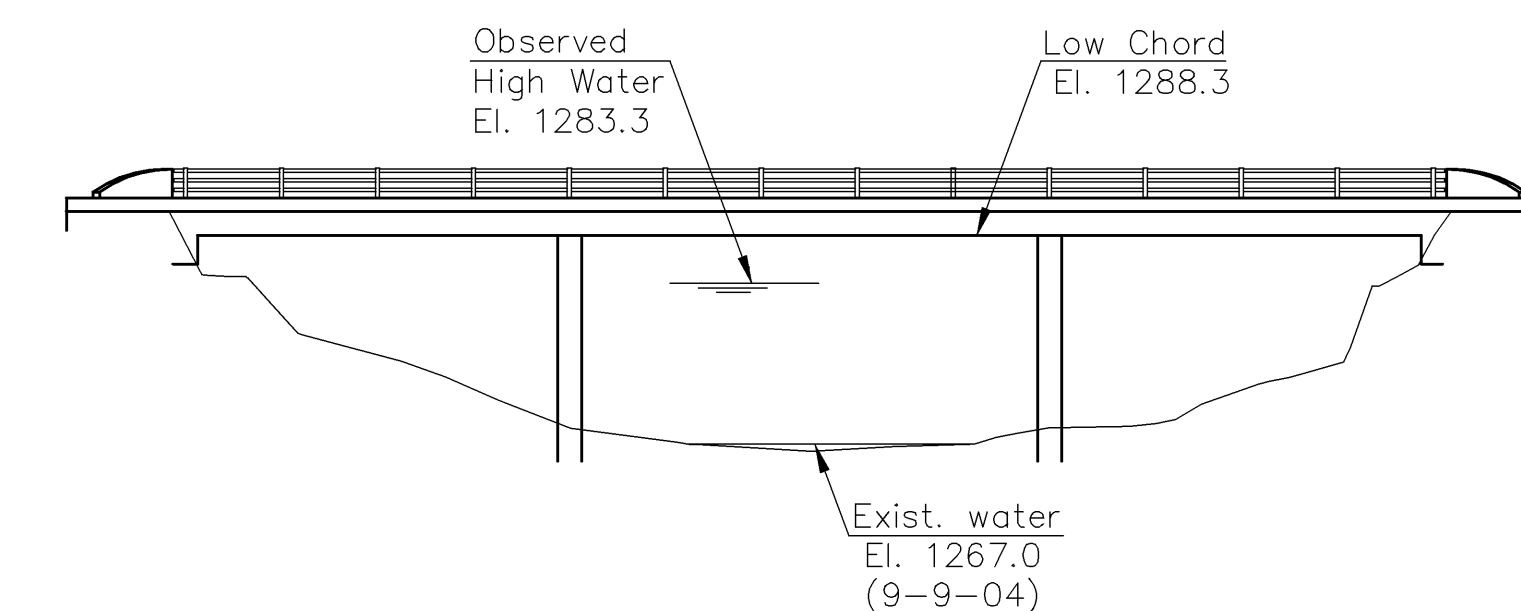
Ref. P.O.T. Sta. 29+87.26  
 1. Fnd. 1/2" pipe in thimble in Ctr. Hillside St. & E. Ross Prkwy.  
 2. "X" cut in top curb Ctr. W. end island 24.25' E  
 3. "X" cut in top curb 25.17' WNW  
 4. "X" cut in top curb 57.94' NNW

Ref. E 1/4 Cor. Sec. 3 T28S R1E = Sta. 36+51.32  
 Deflection = 0'19"10" Lt.  
 1. Fnd. 1/2" iron pipe in thimble @ corner  
 2. Fnd. nail & shiner in light pole 40.61' SW  
 3. Fnd. "X" cut in top curb 39.72' WNW  
 4. Fnd. "X" cut in top curb 39.14' NW  
 5. Fnd. PK nail painted pink in Tel pole 41.23' SE  
 6. Ctr. City of Wichita benchmark 71.90' SSE  
 7. In Ctr. S. Ent. to Joyland Park  
 8. In Ctr. of Hillside St.

Ref. P.O.T. Sta. 39+57.62  
 1. Set cotton gin thimble @ P.O.T.  
 2. Spike & washer in power pole 29.34' W  
 3. "d" cut in top curb (BM #3) 43.93' SW  
 4. "X" cut in top curb 34.60' NW

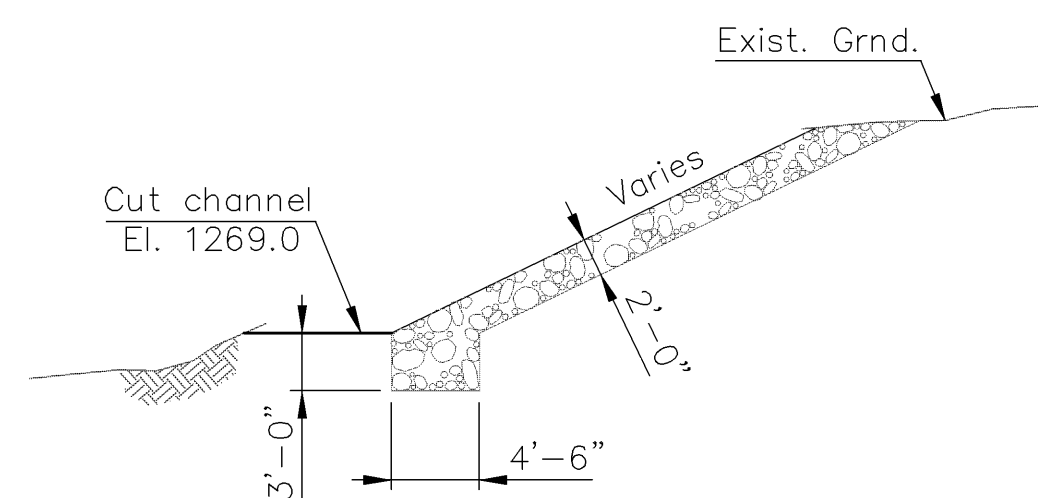
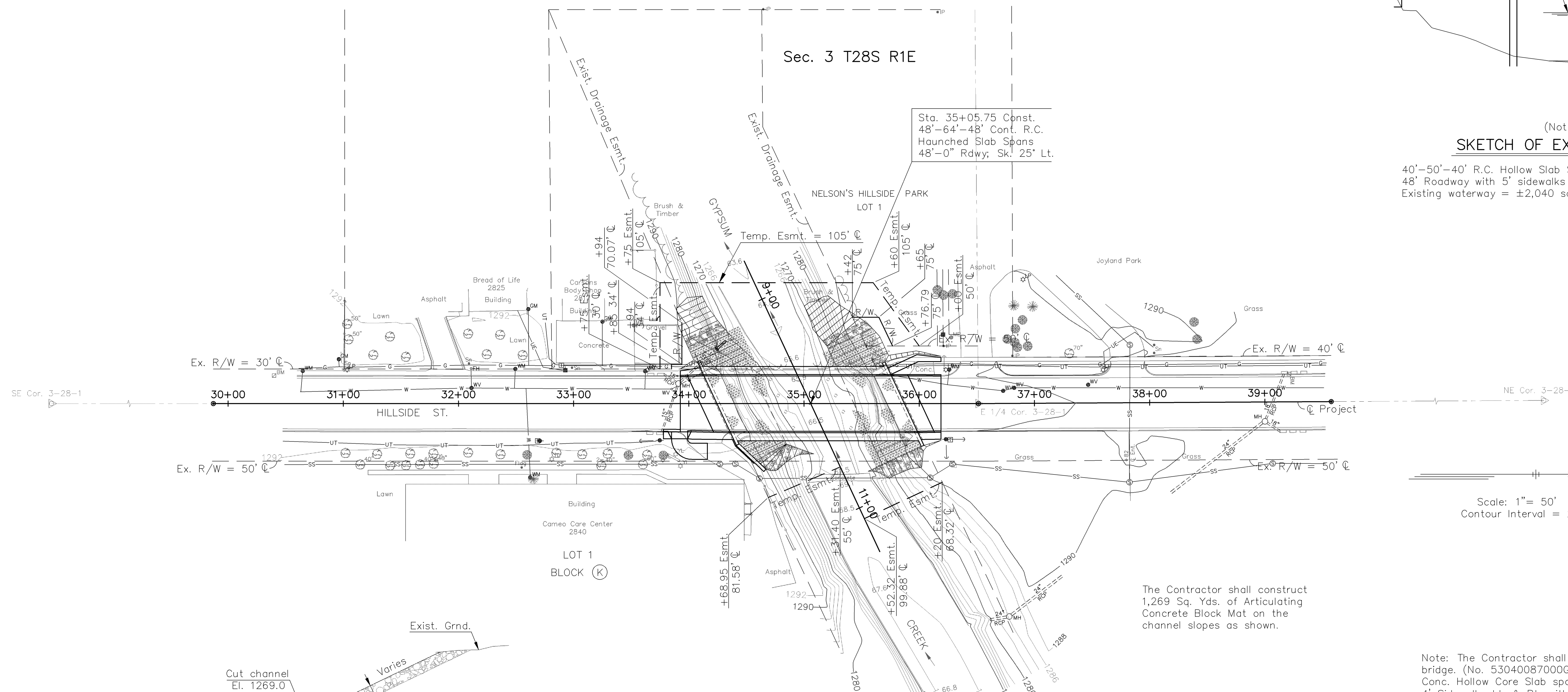
Ref. NE Cor. Sec. 3 T28S R1E = Sta. 64+42.98  
 1. Fnd. 1/2" iron pipe in thimble @ corner  
 2. Fnd. "X" cut in top curb 62.84' SE  
 3. Fnd. "X" cut in top curb 63.95' SW  
 4. Fnd. "X" cut in top curb 63.30' NW  
 5. Ctr. City of Wichita bench mark 71.31' NE  
 6. In Ctr. intersection Hillside & Pawnee Streets

STATE	PROJECT NO.	YEAR	SHEET NO.	TOTAL SHEETS
KANSAS	87 N-0359-01	2006	15	61



(Not to scale)  
**SKETCH OF EXISTING STRUCTURE**

40'-50'-40' R.C. Hollow Slab Spans on concrete substructure.  
 48' Roadway with 5' sidewalks left and right. Skewed 25' left.  
 Existing waterway = ±2,040 sq. ft. Bridge no. 53040087000GC20.



**TYPICAL SECTION CHANNEL IMPROVEMENT**

(Showing slope protection outside articulating concrete block mats)

Note: The Contractor shall construct "Slope Protection (Riprap Stone) (Light 24")" on the channel slopes as shown.  
 SW Quadrant = 33 C.Y.  
 SE Quadrant = 55 C.Y.  
 NW Quadrant = 37 C.Y.  
 NE Quadrant = 55 C.Y.  
 Total = 180 C.Y.

The Contractor shall Construct Concrete Bridge Approach Pavement  
 Sta. 33+93.60 to Sta. 34+24.37 and  
 Sta. 35+87.13 to Sta. 36+17.90  
 Total 343.3 Sq. Yds.

The Contractor shall construct 1,269 Sq. Yds. of Articulating Concrete Block Mat on the channel slopes as shown.

Sec. 2 T28S R1E

Scale: 1" = 50'  
 Contour Interval = 2'

Note: The Contractor shall remove the existing bridge. (No. 53040087000GC20) (40'-50'-40' Conc. Hollow Core Slab spans, 48'-0" roadway, 4' Sidewalks Lt. & Rt. with concrete substructure.

The existing bridge rails and posts shall be removed in salvageable condition and delivered to the City of Wichita's Central Maintenance Facility at 1801 South McLean. This work will be paid for as bid item "Transportation of Salvage Material" Lump Sum (Non-Participating).

All remaining materials shall be disposed of at a site provided by the Contractor and approved by the Engineer.

BM #1 - "d" cut in top curb 24.32' Lt.  
 Sta. 30+39.91 Elev. = 1291.30

BM #2 - City of Wichita Std. disc in NE Cor. bridge  
 28.29' Rt. Sta. 35+85.31 Elev. = 1291.74

BM #3 - "d" cut in top curb 24.12' Lt.  
 Sta. 39+21.13 Elev. = 1288.84

PROJECT NO. 87 N-0359-01  
**CONTOUR MAP**  
 HILLSIDE ST. BRIDGE OVER GYPSUM CREEK  
 STA. 35+05.75 CITY OF WICHITA

<b>CFS</b> Cook, Flatt & Strobel ENGINEERS, P.A.	
DESIGNED	RSC
DETAILED	DEG
QUANTITIES	SHEET
SCALE	DATE
	OF

J:\2004\PROJ\04559\DWGS\CONT 1"=50'