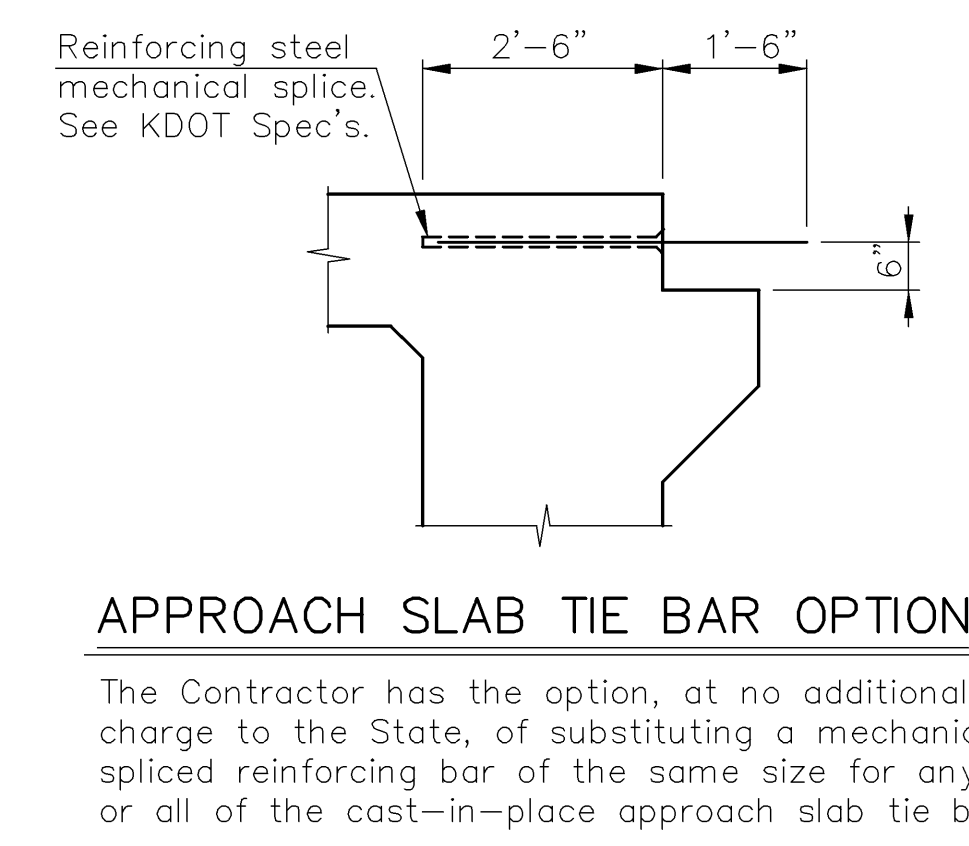
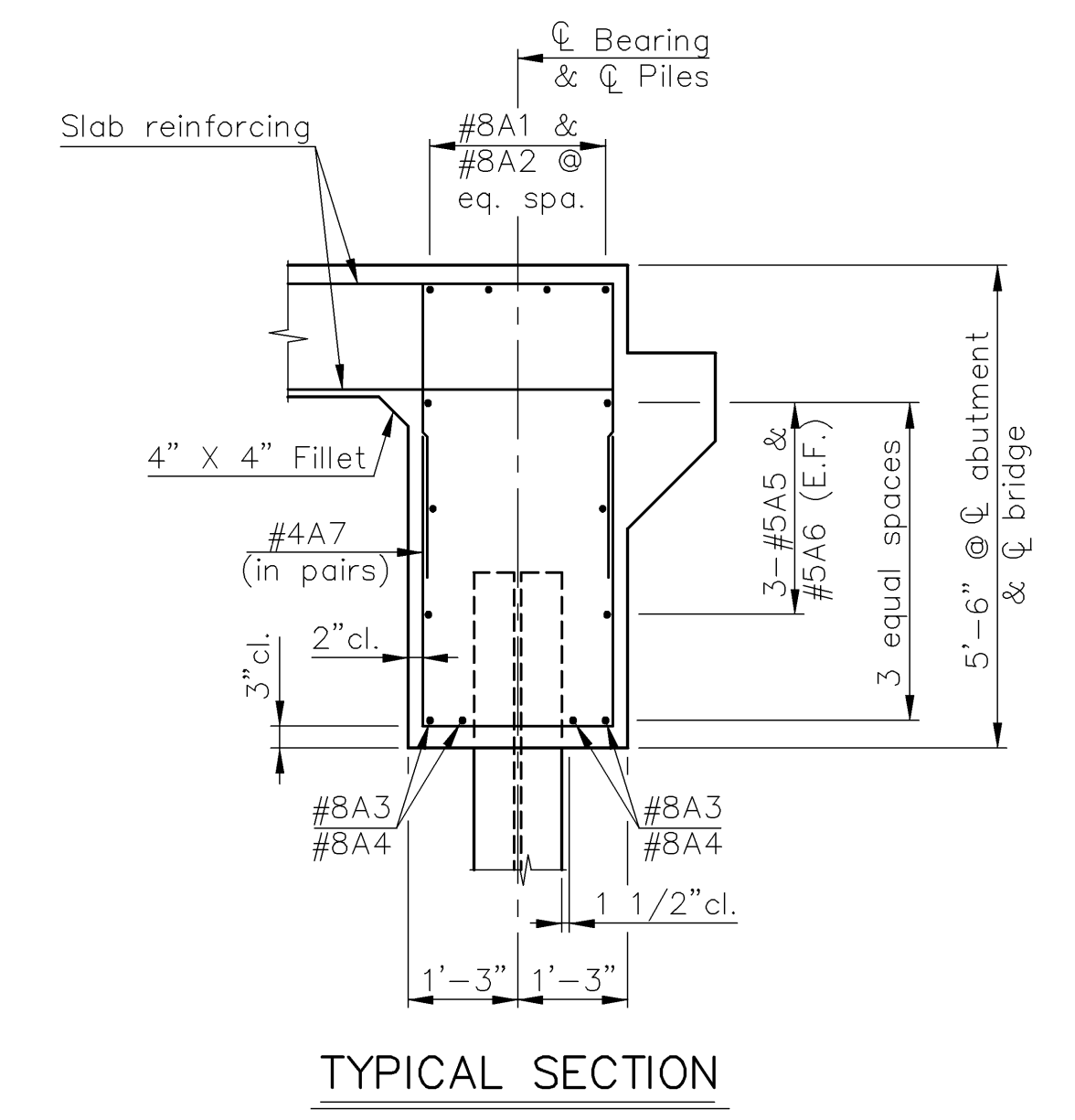
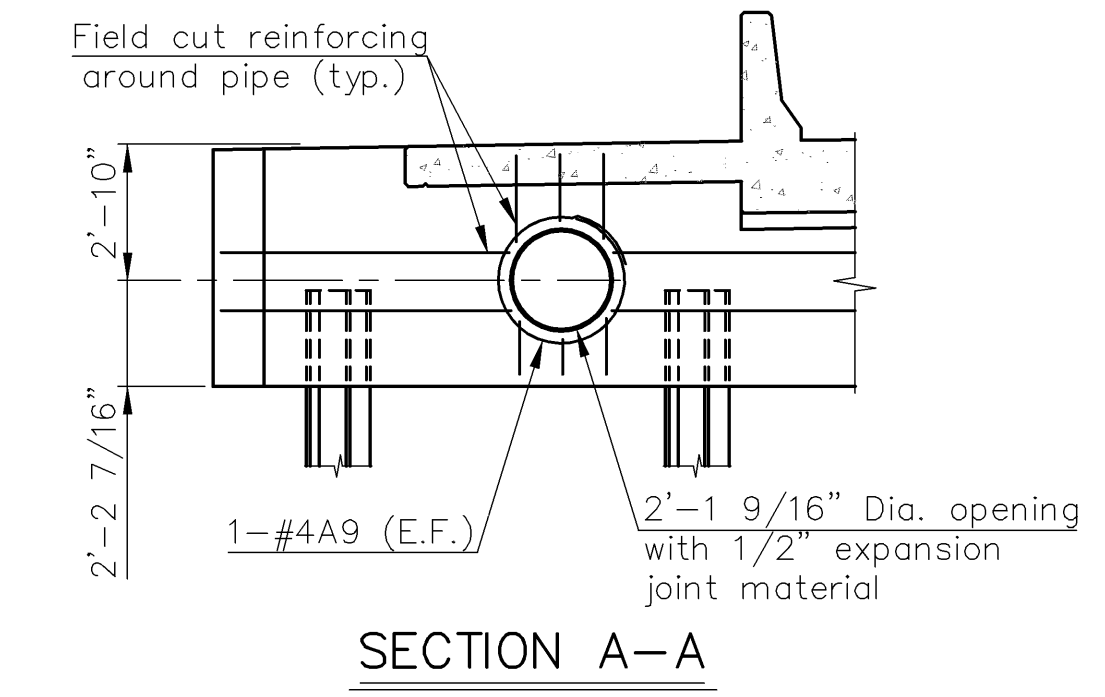
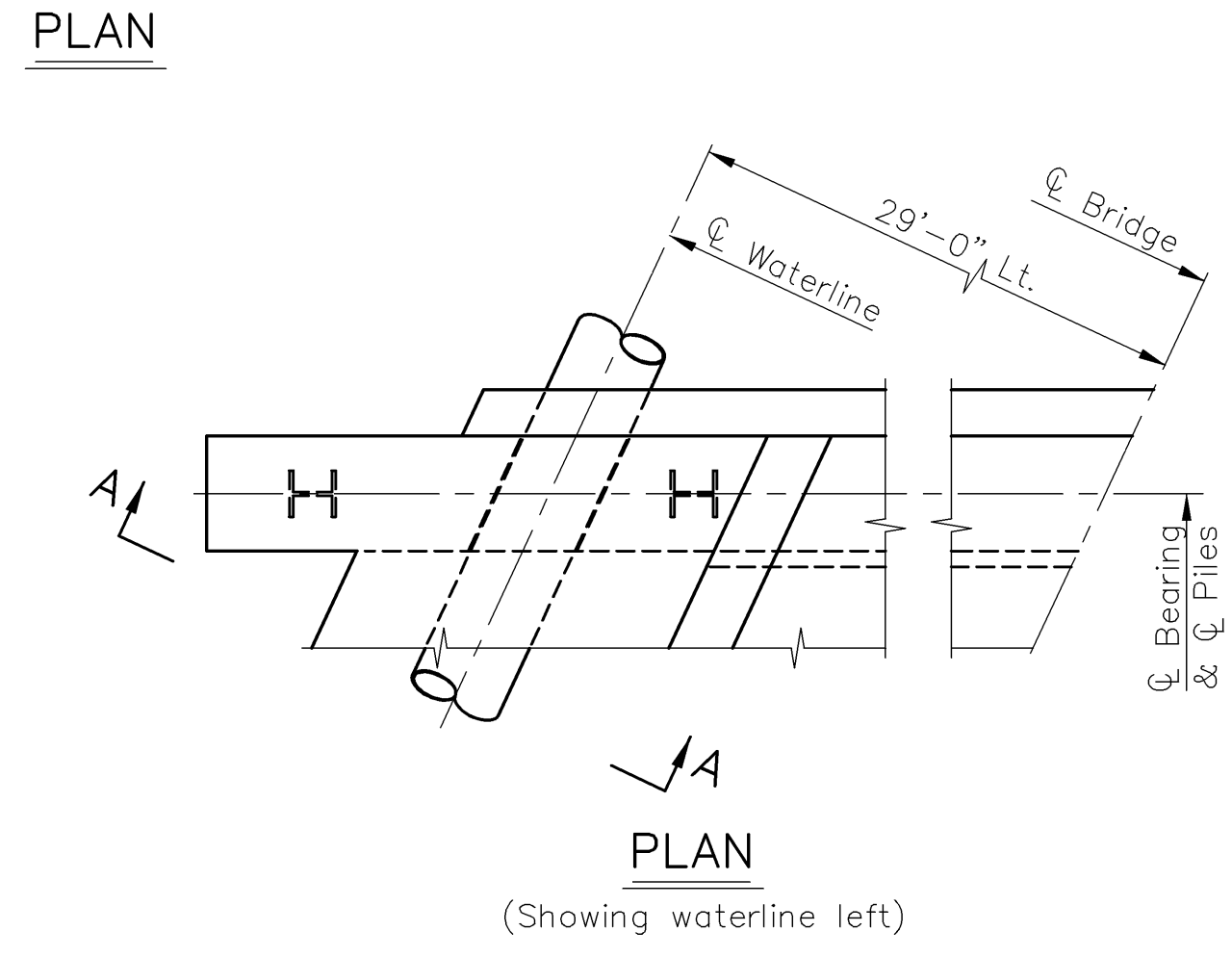
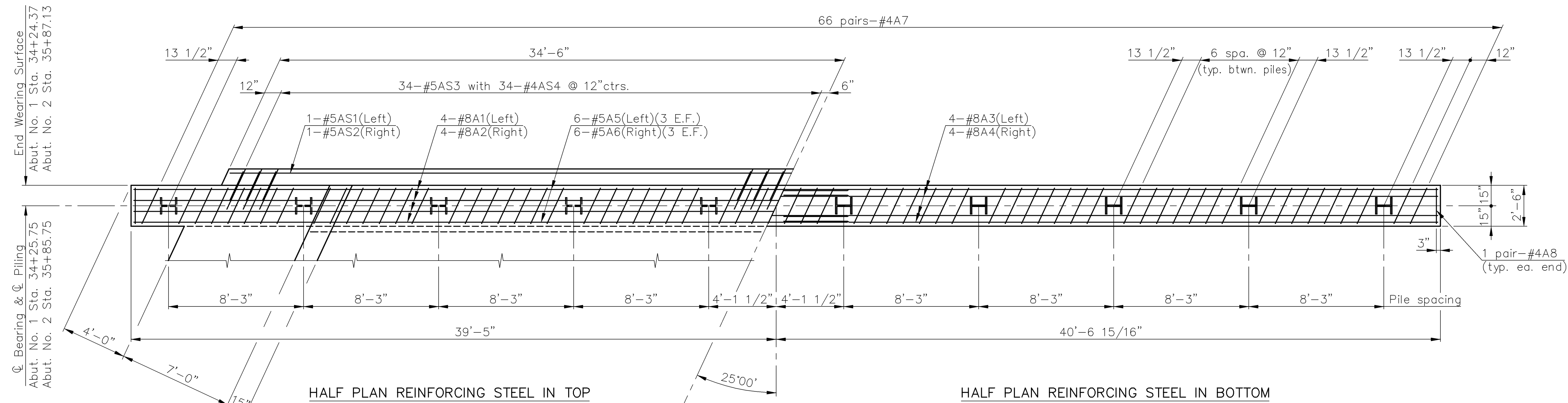
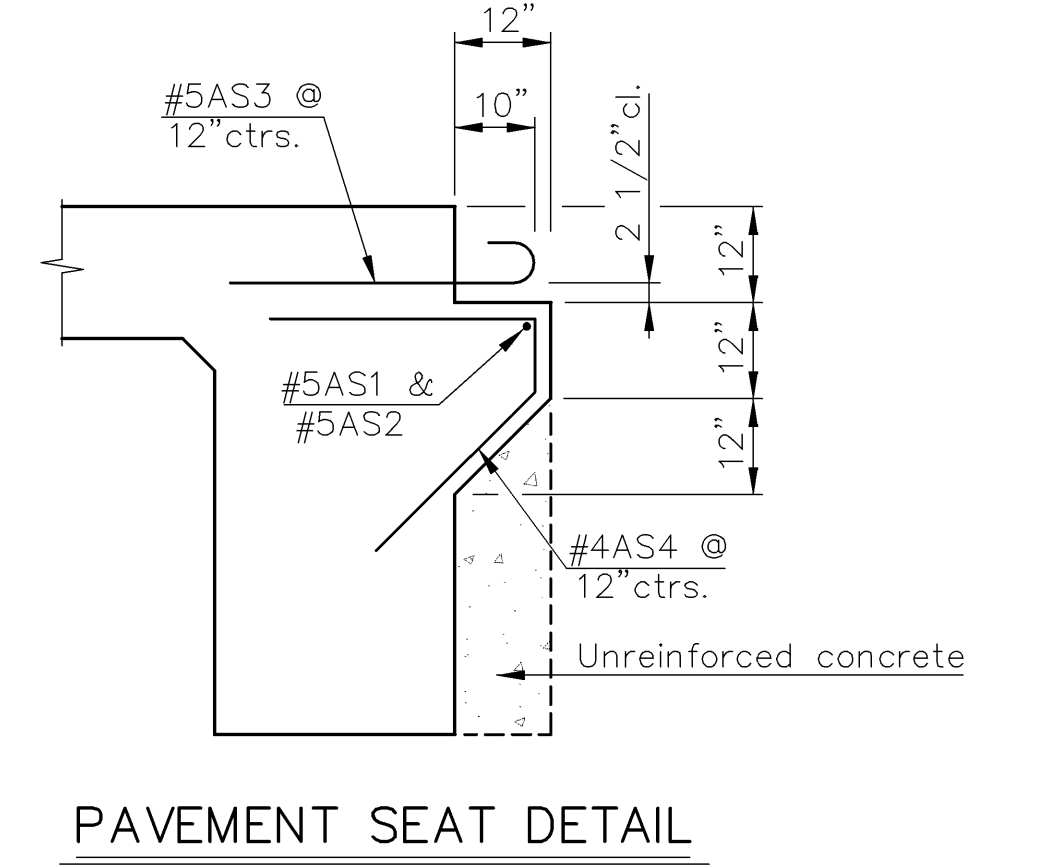
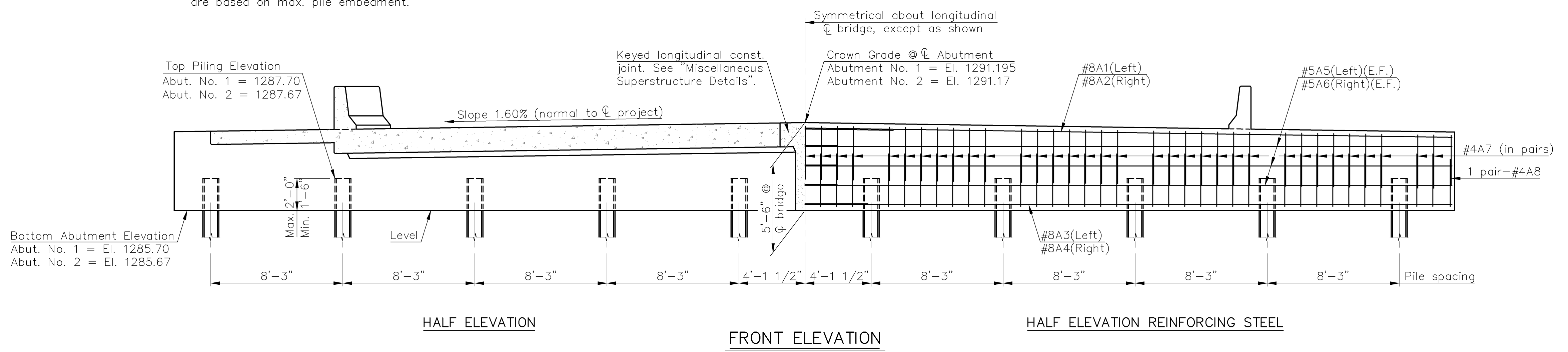


Note: E.F. Indicates each face  
 N.F. Indicates near face  
 F.F. Indicates far face

STATE	PROJECT NO.	YEAR	SHEET NO.	TOTAL SHEETS
KANSAS	87 N-0359-01	2006	19	61



Note: Top of piling elevations shown are based on max. pile embedment.



At the Contractors option and expense, the backwall may be formed vertically as shown (7.0 C.Y.). Concrete volume is for information only and is not included in the summary of quantities. If this option is used add 1.5 tons per pile and verify allowable pile loads.

DESIGN PILE PRESSURE  
 45.6 Tons per pile  
 Group I Loading

PROJECT NO. 87 N-0359-01				
ABUTMENT DETAILS				
HILLSIDE ST. BRIDGE OVER GYPSUM CREEK		DESIGNED	RSC	SCALE
STA. 35+05.75		DETAILED	DEG	DATE
CITY OF WICHITA		QUANTITIES	SHEET	OF

J:\2004PROJ\04559\DWGS\ABUT 1"=4'