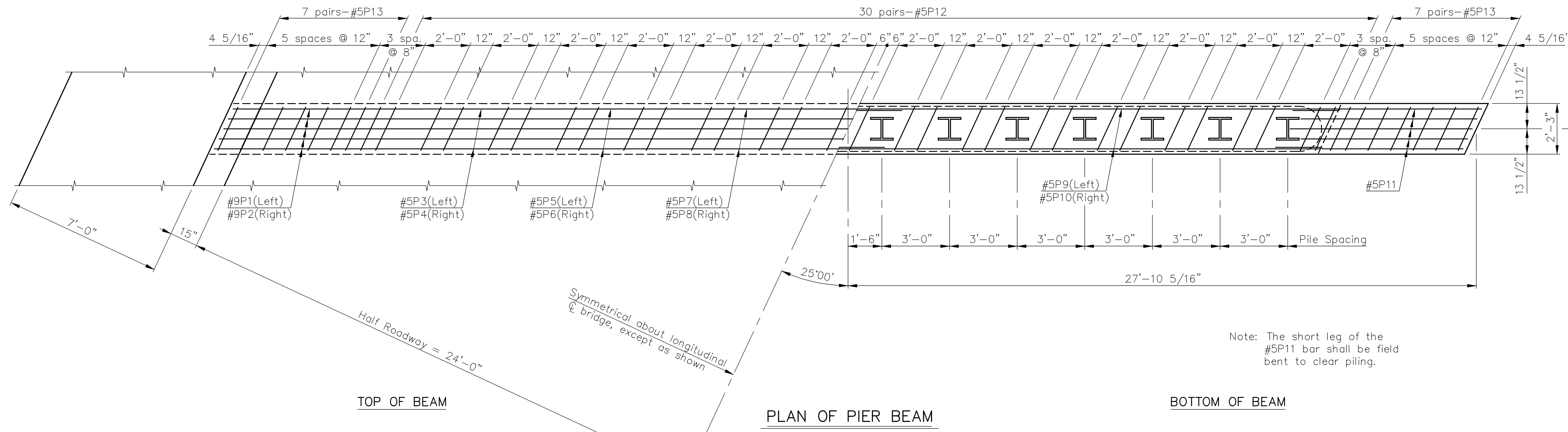


Note: E.F. Indicates each face
 N.F. Indicates near face
 F.F. Indicates far face

STATE	PROJECT NO.	YEAR	SHEET NO.	TOTAL SHEETS
KANSAS	87 N-0359-01	2006	21	61

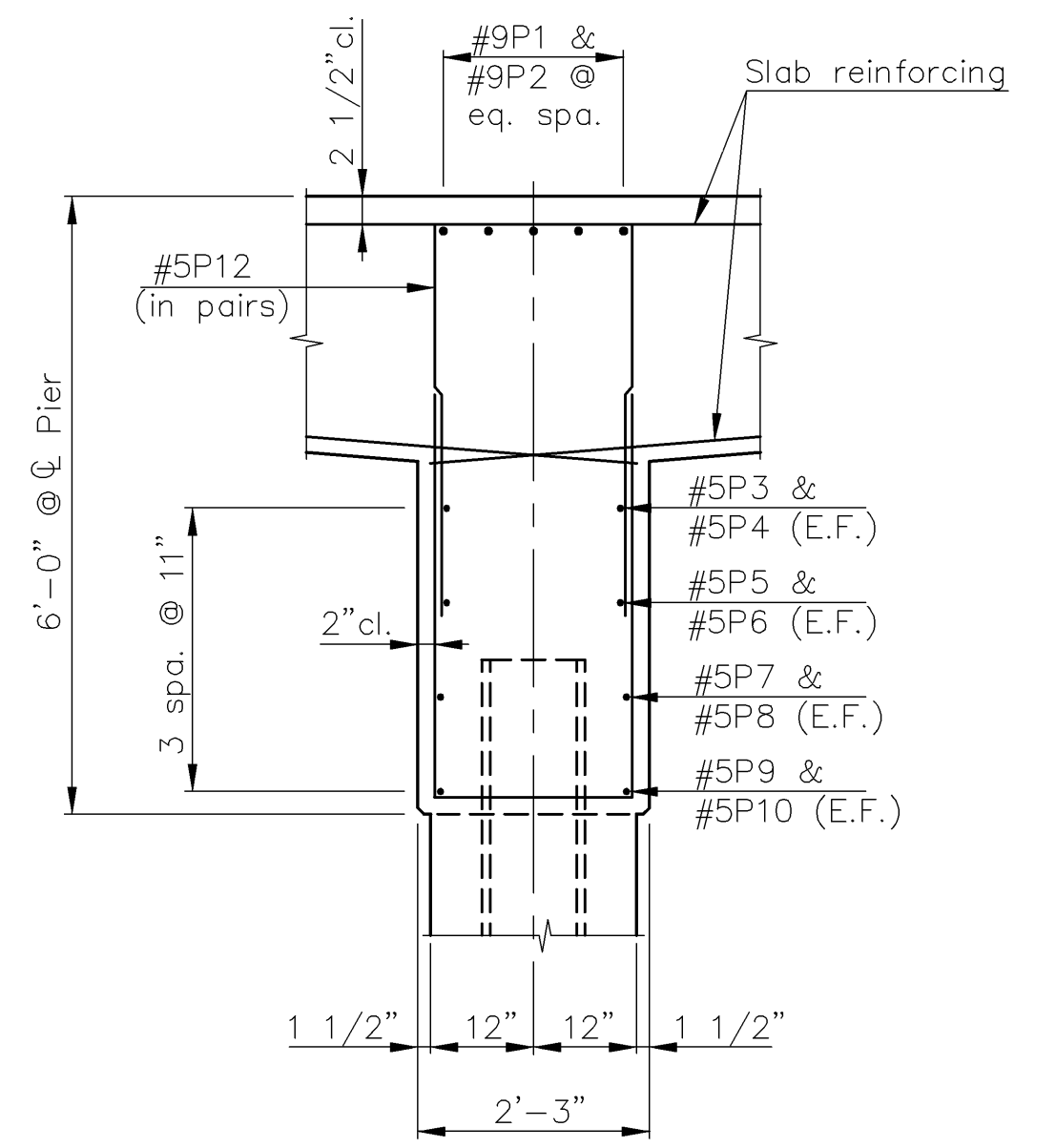


TOP OF BEAM

PLAN OF PIER BEAM

BOTTOM OF BEAM

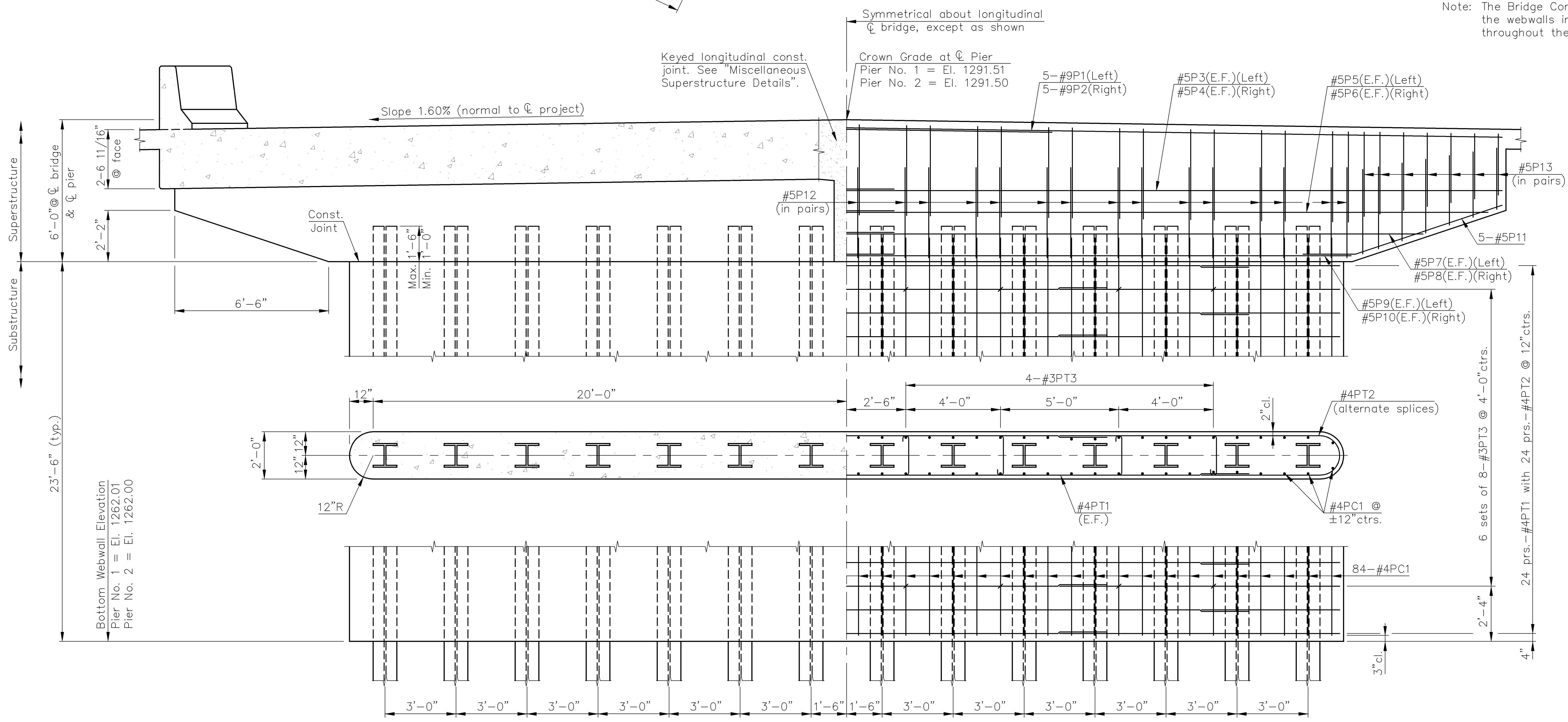
Note: The short leg of the #5P11 bar shall be field bent to clear piling.



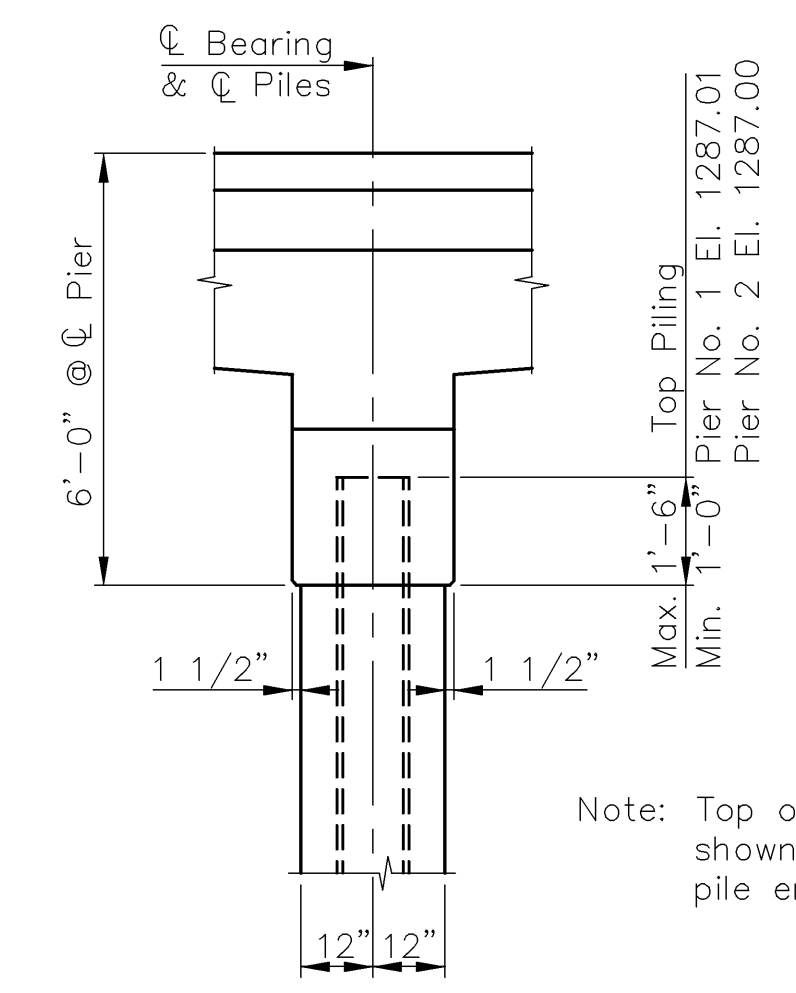
TYPICAL SECTION

(Near centerline of bridge)

Note: The Bridge Contractor shall maintain the webwalls in a vertical position throughout the life of the contract.



FRONT ELEVATION



END ELEVATION

DESIGN PILE PRESSURE
 68.4 Tons per pile
 Group I Loading

Note: Space the #3PT3 bars as shown and place diagonally to tie both the horizontal and vertical reinforcing.

PROJECT NO. 87 N-0359-01			
PIER DETAILS			
HILLSIDE ST. BRIDGE OVER GYPSUM CREEK		DESIGNED RSC	SCALE
STA. 35+05.75		DETAILED DEG	DATE
CITY OF WICHITA		QUANTITIES	SHEET OF

J:\2004PROJ\04559\DWGS\PIER 1"-2.667"