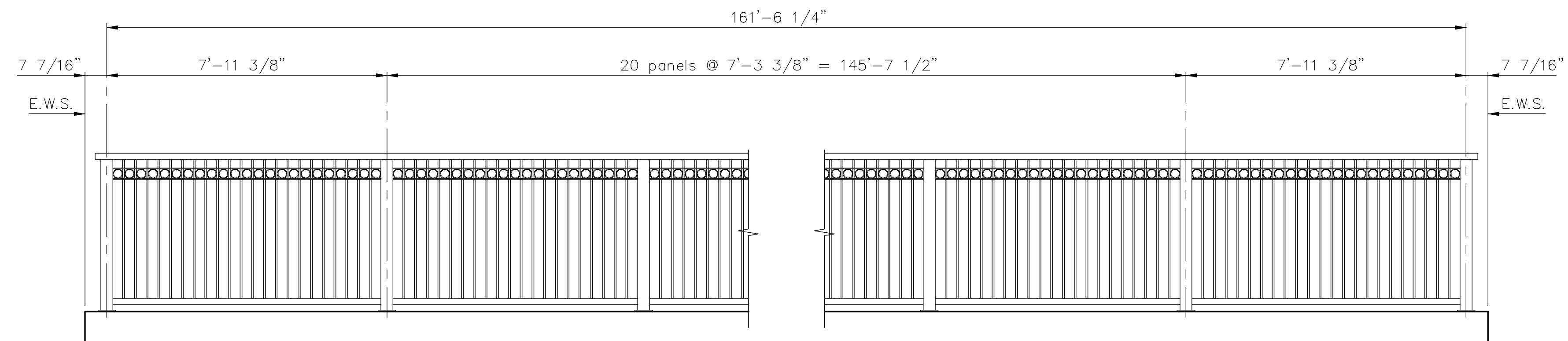
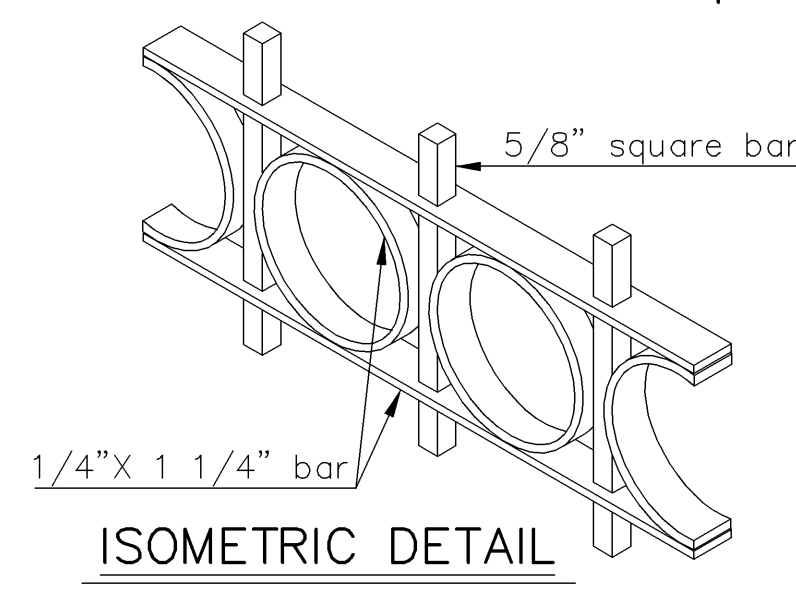


STATE	PROJECT NO.	YEAR	SHEET NO.	TOTAL SHEETS
KANSAS	87 N-0359-01	2006	27	61

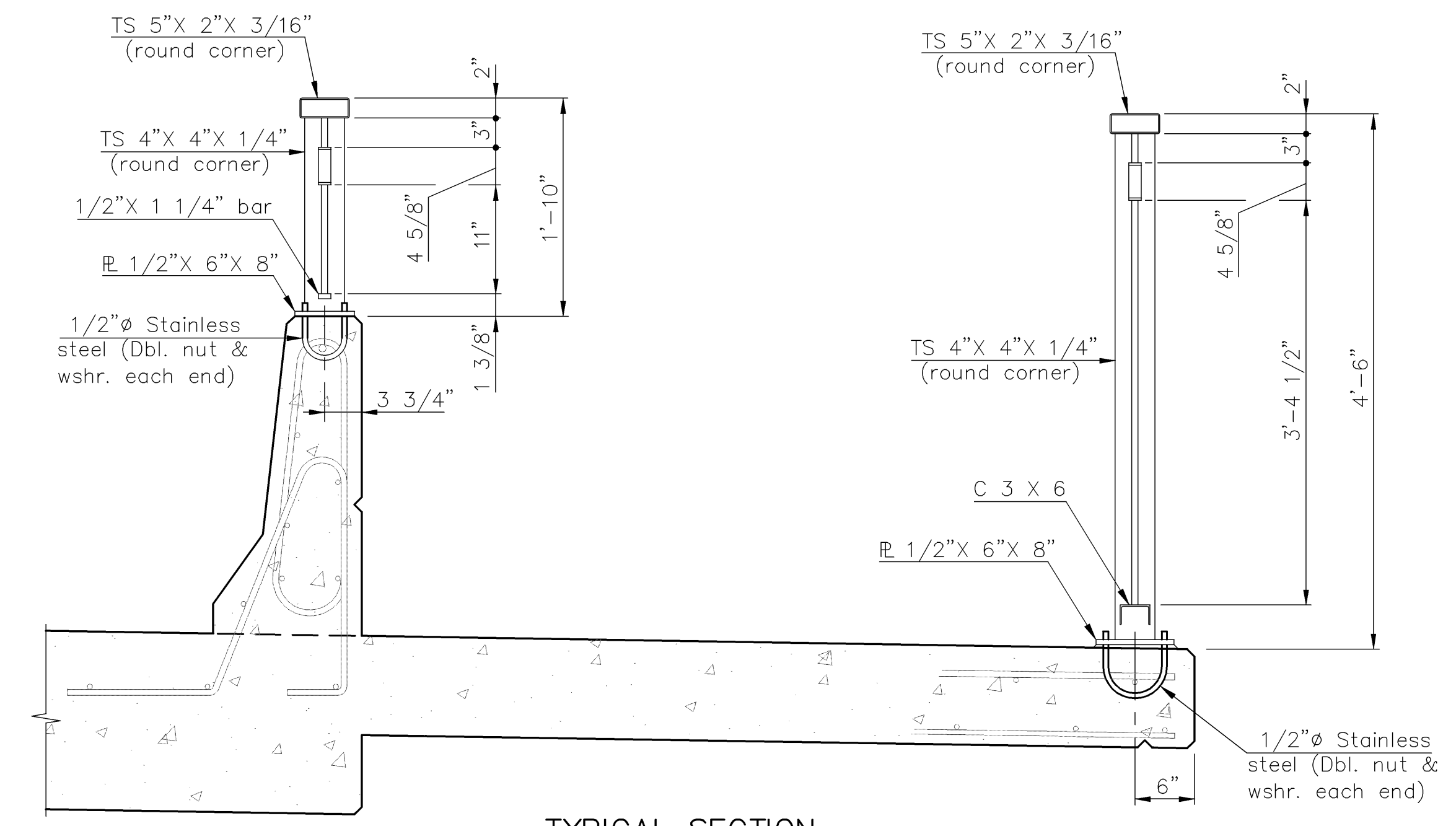
Note: Longitudinal dimensions are measured at the longitudinal ϕ of rail.



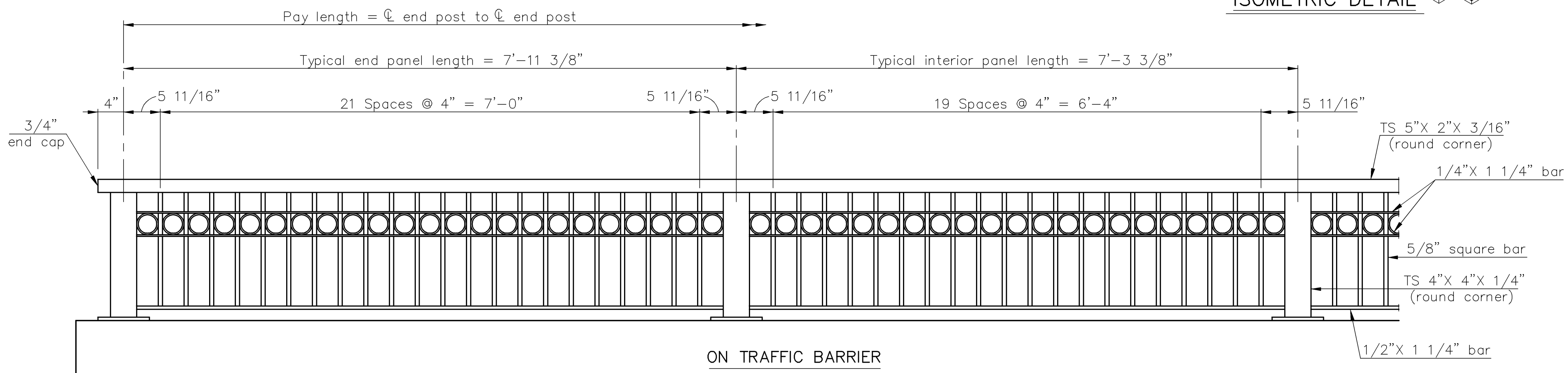
ELEVATION



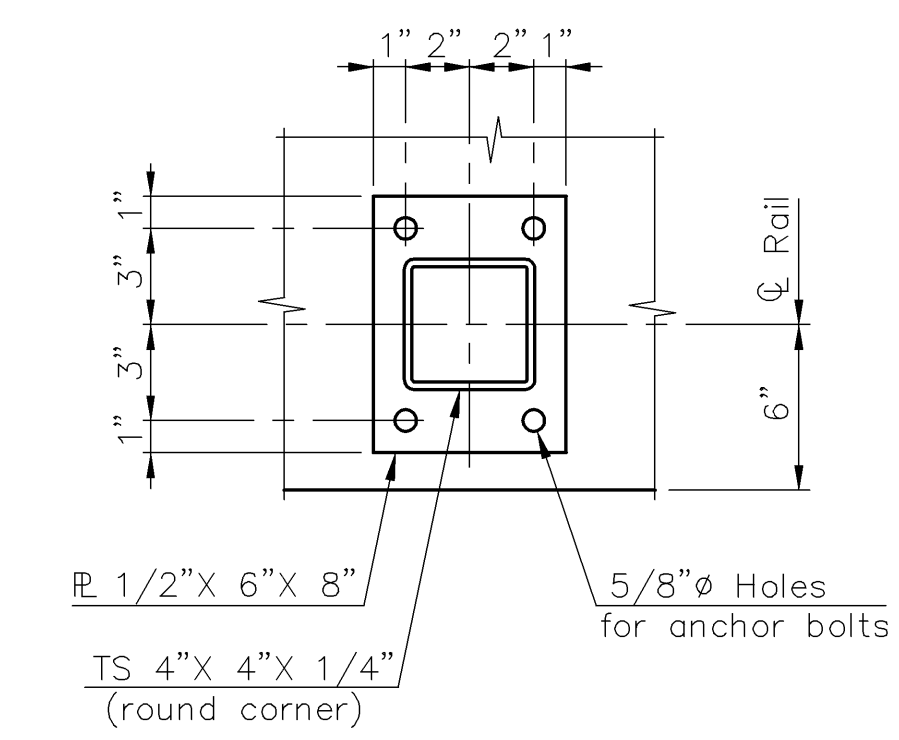
ISOMETRIC DETAIL



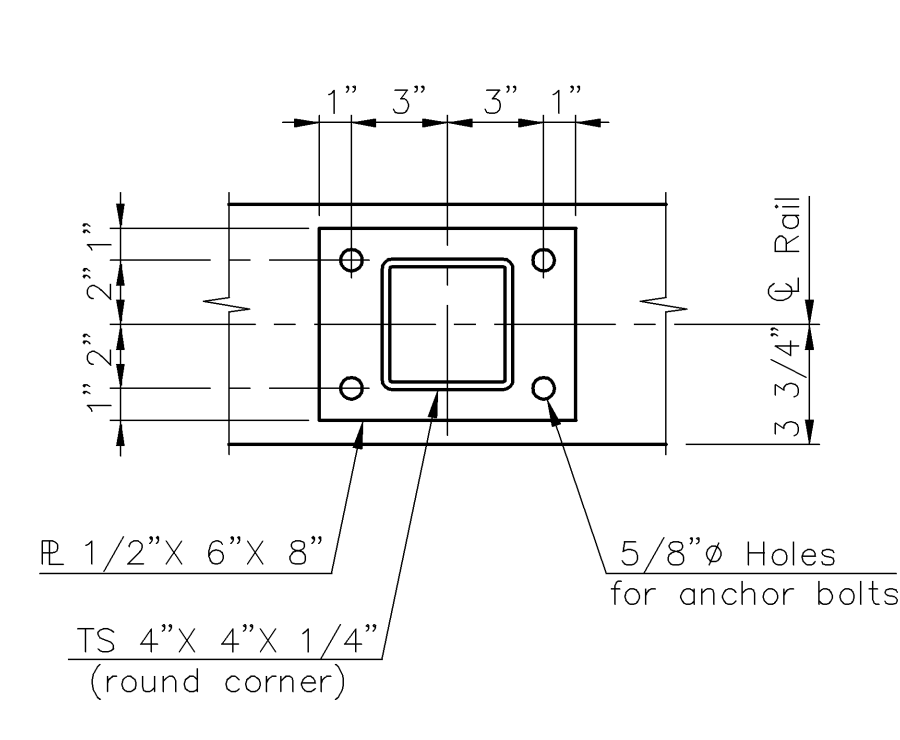
TYPICAL SECTION



ON TRAFFIC BARRIER

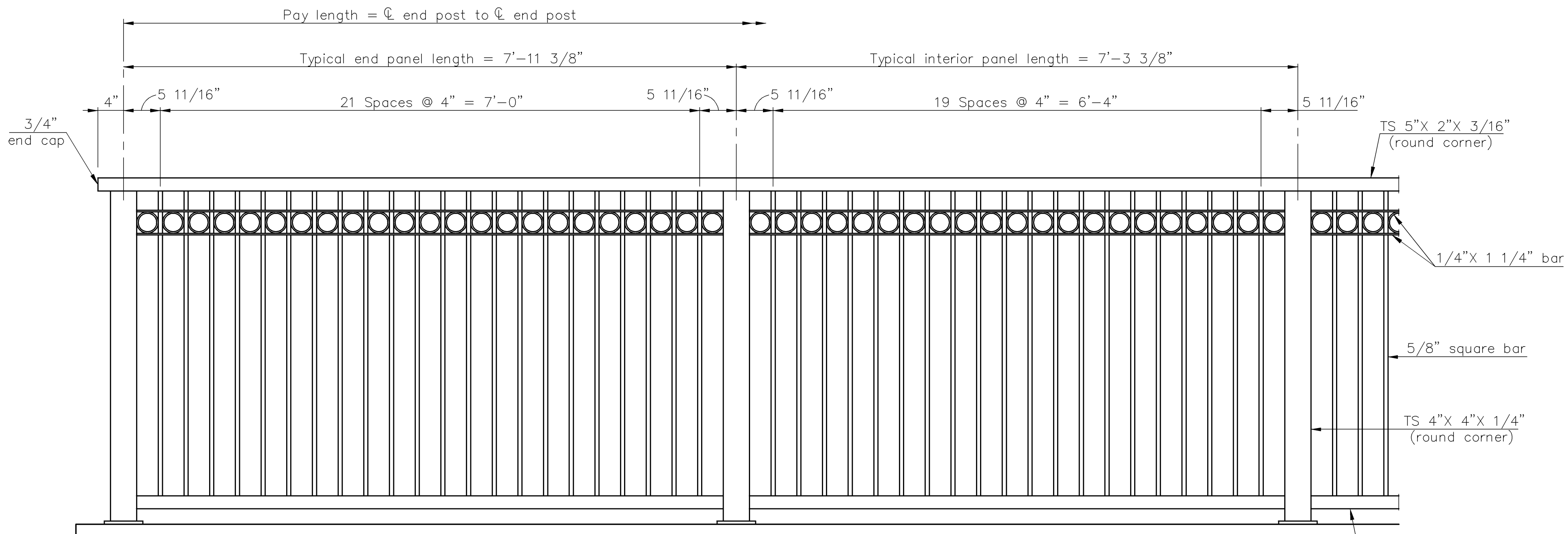


ON SIDEWALK



ON TRAFFIC BARRIER

BASE PLATE



ON SIDEWALK

ELEVATION

GENERAL NOTES

Structural tubing for the top rail and posts shall conform to ASTM A500, Grade B. All remaining structural steel shall conform to ASTM A709 (Grade 36).

Metal handrails shall be constructed according to Section 709 of the Standard Specifications.

All elements of the rail assembly shall be galvanized and painted after fabrication. Galvanizing shall be done in accordance with the requirements of the KDOT Specifications. Furnish a three component paint system consisting of a 2 Component 98% Solids Polymeric Epoxy Amido-Amine Primer Tiecoat (1-2 mils dry film thickness) and a high-build polyurethane finish coat. Supply the finish coat in the color black. Furnish a finish coat that conforms to the following requirement: High-Build Polyurethane Finish Coat.....
KDOT Special Provisions 90P-186-R2

The rails shall be set parallel to the bridge wearing surface. All posts and pickets shall be set vertical. Shims may be used between the concrete and the base plates.

All top and bottom handrail-to-post welded connections shall be ground smooth. No field welding will be permitted. The Contractor shall submit shop drawings to the Engineer for approval prior to fabrication.

Apply the paint system as recommended by the manufacturer. Touch-up the painted handrail in the field as necessary.

All material, labor, splices, shims and installation shall be paid for under the bid items "Handrail (Metal) (54") or "Handrail (Metal) (22)". The handrail is to be bid on a linear feet basis from centerline of posts as shown in the details and is measured horizontally (level).

PROJECT NO. 87 N-0359-01				
PEDESTRIAN RAIL DETAILS				
HILLSIDE ST. BRIDGE OVER GYPSUM CREEK		DESIGNED	RSC	SCALE
STA. 35+05.75		DETAILED	DEG	DATE
CITY OF WICHITA		QUANTITIES	SHEET	OF

J:\2004PROJ\04559\DWGS\RAIL 1"=3'