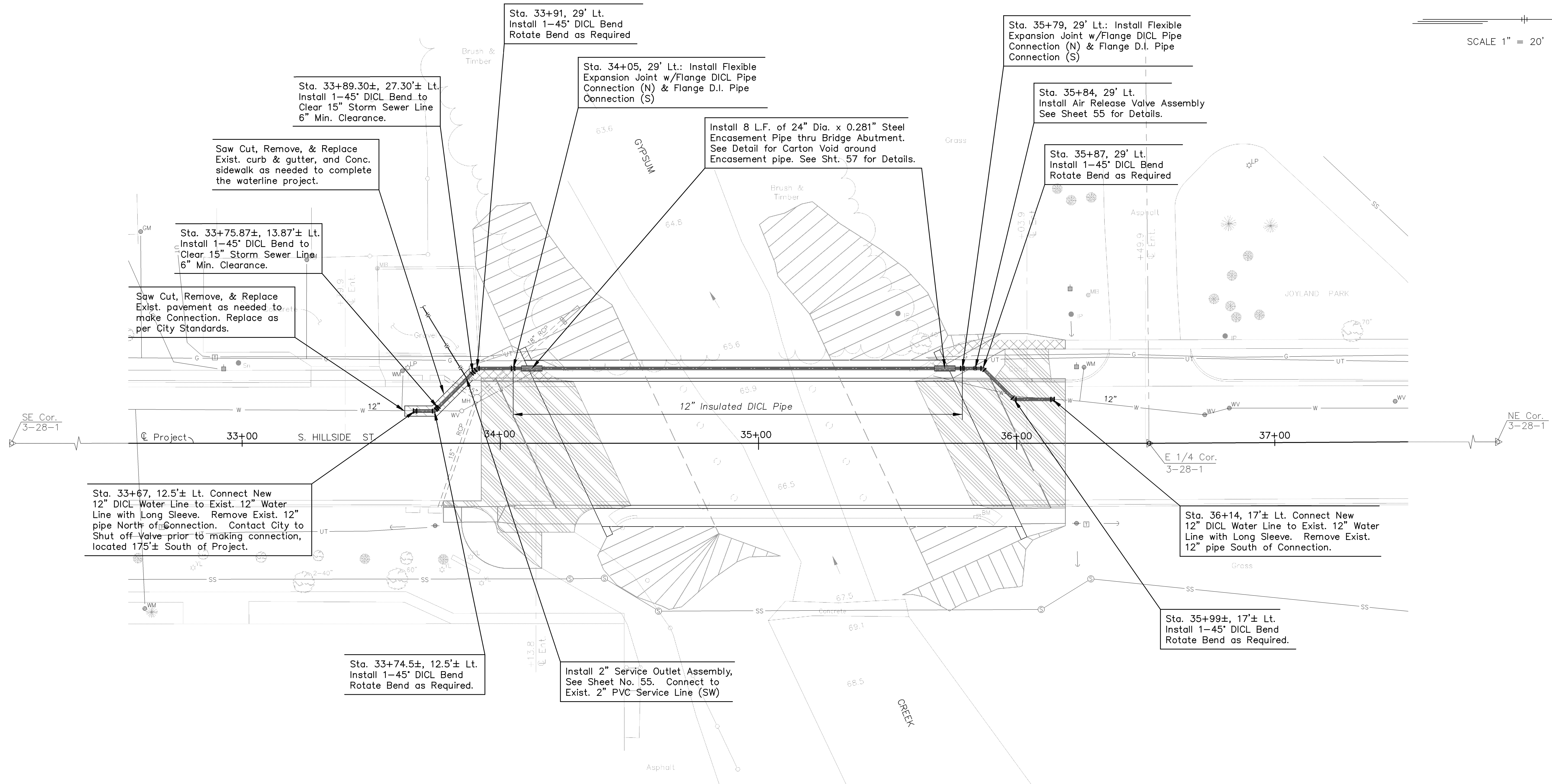
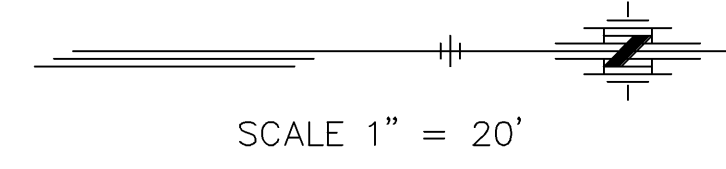


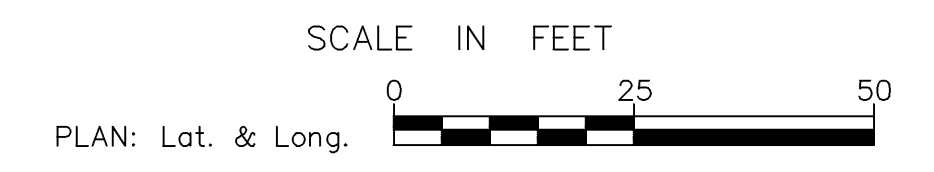
Sec. 3 T28S R1E

STATE	PROJECT NO.	YEAR	SHEET NO.	TOTAL SHEETS
KANSAS	87 N-0359-01	2006	52	61

DATE	BY	REFERENCE NOTED	CHECKED



- Sta. 33+91, 29' Lt. Install 1-45° DICL Bend Rotate Bend as Required
- Sta. 33+89.30±, 27.30± Lt. Install 1-45° DICL Bend to Clear 15" Storm Sewer Line 6" Min. Clearance.
- Saw Cut, Remove, & Replace Exist. curb & gutter, and Conc. sidewalk as needed to complete the waterline project.
- Sta. 33+75.87±, 13.87± Lt. Install 1-45° DICL Bend to Clear 15" Storm Sewer Line 6" Min. Clearance.
- Saw Cut, Remove, & Replace Exist. pavement as needed to make Connection. Replace as per City Standards.
- Sta. 33+67, 12.5± Lt. Connect New 12" DICL Water Line to Exist. 12" Water Line with Long Sleeve. Remove Exist. 12" pipe North of Connection. Contact City to Shut off Valve prior to making connection, located 175± South of Project.
- Sta. 33+74.5±, 12.5± Lt. Install 1-45° DICL Bend Rotate Bend as Required.
- Install 2" Service Outlet Assembly, See Sheet No. 55. Connect to Exist. 2" PVC Service Line (SW)
- Sta. 34+05, 29' Lt.: Install Flexible Expansion Joint w/Flange DICL Pipe Connection (N) & Flange D.I. Pipe Connection (S)
- Install 8 L.F. of 24" Dia. x 0.281" Steel Encasement Pipe thru Bridge Abutment. See Detail for Carton Void around Encasement pipe. See Sht. 57 for Details.
- Sta. 35+79, 29' Lt.: Install Flexible Expansion Joint w/Flange DICL Pipe Connection (N) & Flange D.I. Pipe Connection (S)
- Sta. 35+84, 29' Lt. Install Air Release Valve Assembly See Sheet 55 for Details.
- Sta. 35+87, 29' Lt. Install 1-45° DICL Bend Rotate Bend as Required
- Sta. 36+14, 17± Lt. Connect New 12" DICL Water Line to Exist. 12" Water Line with Long Sleeve. Remove Exist. 12" pipe South of Connection.
- Sta. 35+99±, 17± Lt. Install 1-45° DICL Bend Rotate Bend as Required.



KANSAS DEPARTMENT OF TRANSPORTATION
WATER LINE PLAN
HILLSIDE BRIDGE AT RANGE ROAD
 City of Wichita Sedgwick, Co.

Sec. 2 T28S R1E

Drawn by: **CFS** Cook, Flatt & Strobel ENGINEERS, P.A.
 Plotted: **CFS**
 File: J:\2004 PROJ\04559\DWG\WATERLINE SCALE 20'