

# WATER DISTRIBUTION SYSTEM

Lots 13 - 30, Block 1; Lots 1 - 8, Block 2

TARA CREEK

PROJECT NO. 448-90297

O.C.A. NO. 735376

## GENERAL NOTES

Contractor will be required to provide a minimum advance notice of two (2) working days to utility companies prior to starting any excavation as follows:

Kansas One-Call 1-800 DIG-SAFE

The Contractor must notify the following in case of an emergency:

Cox Communications	262-0661
Kansas Gas Service	383-8600
K.G.E. Electric	383-8600
Peoples Natural Gas Company	1-800-303-0357
AT&T	1-800-286-8313
City of Wichita Water Department	262-6000
City of Wichita Sewer Maintenance	262-6000

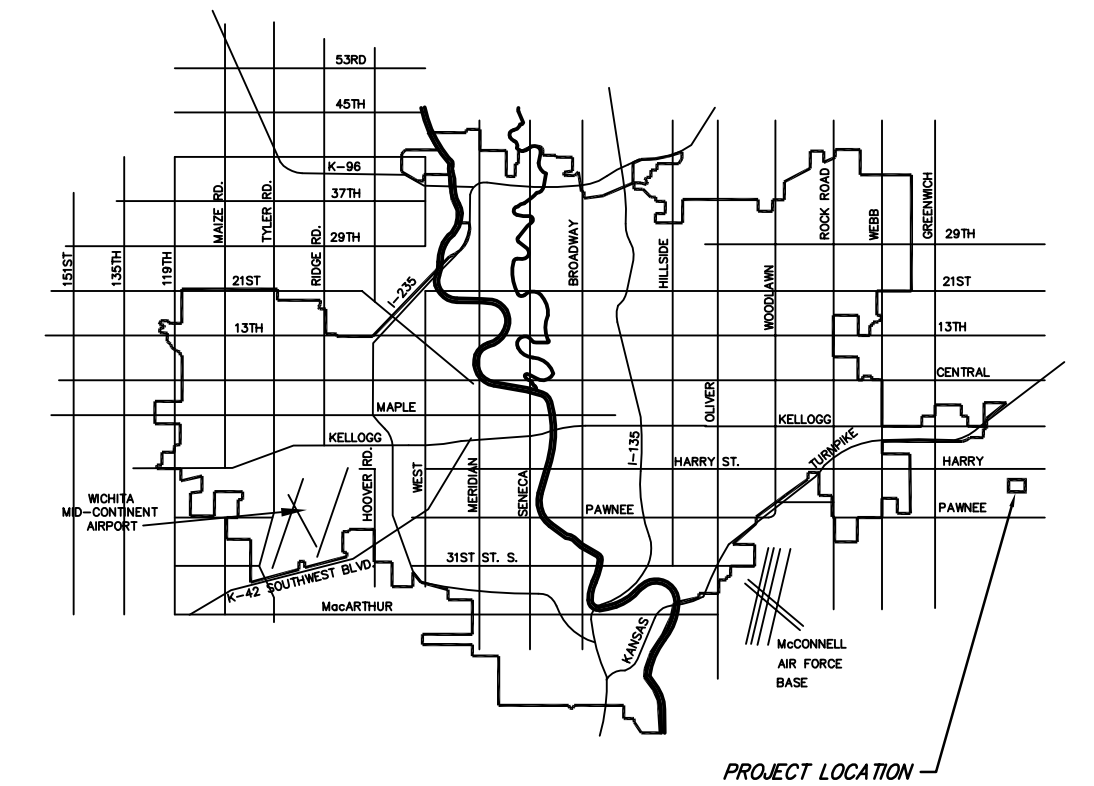
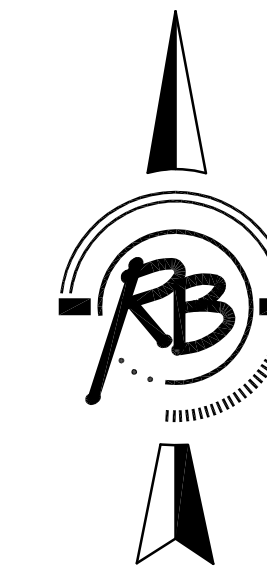
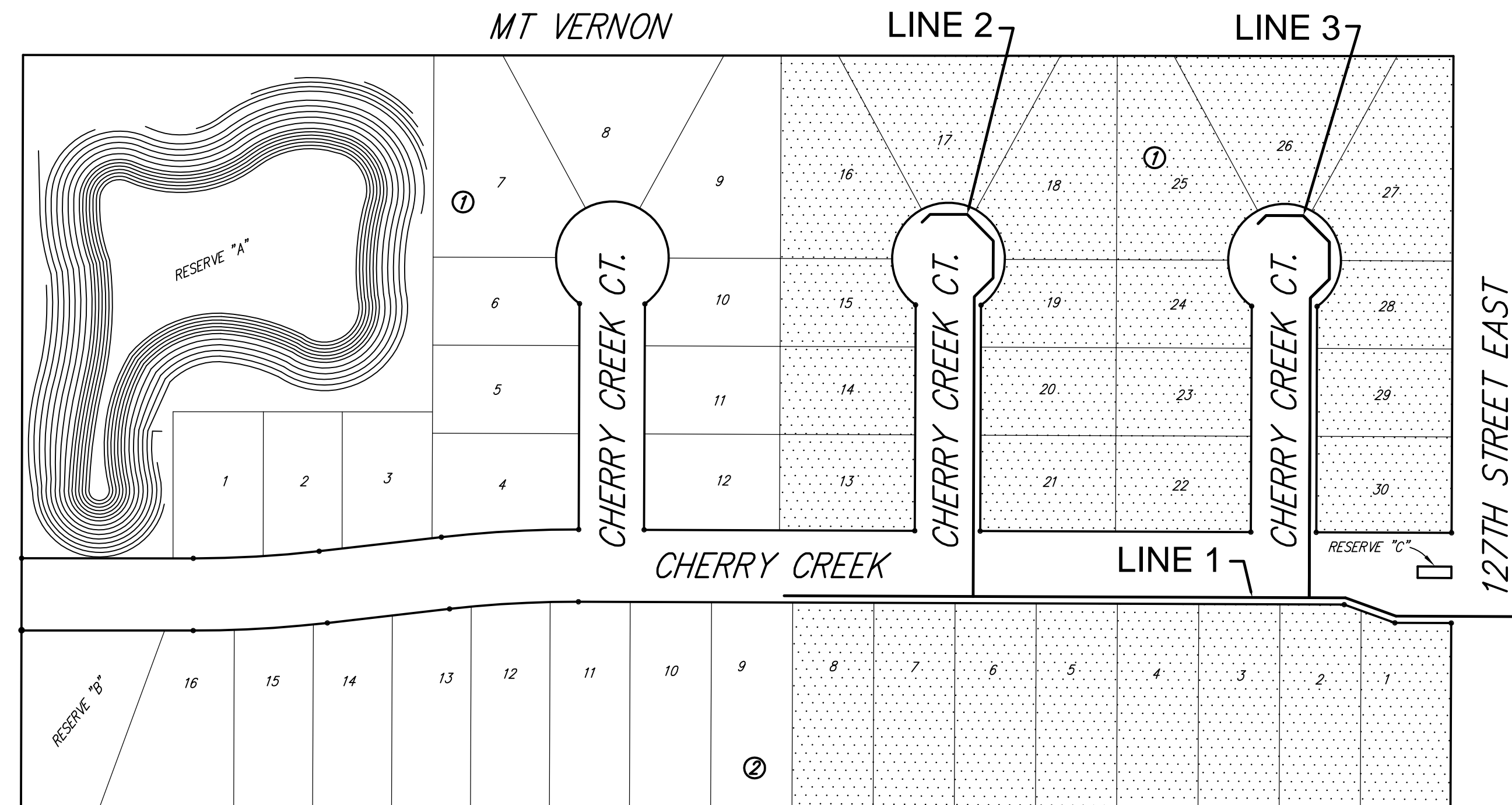
- All water mains and appurtenances shall be installed in accordance with City of Wichita, Kansas, Standard Specifications for Water Main Installations. The water main shall be constructed on the alignment shown by the plans. Trees and shrubs in public right-of-way which are in direct conflict with proposed new construction shall be removed by the Contractor with the Engineer's approval. Trees and shrubs which are not in direct conflict with proposed new construction shall be saved and protected from damage. The cost for any necessary tree trimming, clearing and/or grubbing shall be included in the price bid for the installed water main pipe.
- Opening and closing water valves shall be done slowly to prevent damage to the water distribution system from water hammer. All valves closed by the Contractor must be reopened as new construction permits. Project inspector must ascertain that any valve closed by the Contractor is reopened. Contractor will be permitted to operate water valves only when the project inspector assigned to the project is present.
- Contractor shall not start work on the project until the project inspector is assigned to the project and is present on the site. Any work done without inspection will be required to be uncovered for inspection.
- Rubble from the removal of miscellaneous structures and excess excavation which is to be wasted shall be disposed of on sites to be provided by the Contractor. These sites shall be approved by the Engineer as to suitability, appearance and site location. Locations that, in the opinion of the Engineer, will leave an unsightly appearance will not be approved.
- The Contractor shall be responsible for preserving property irons. The Contractor will be required to re-establish any property irons which are damaged or destroyed by his construction operations. Such irons shall be re-established by a licensed land surveyor in accordance with state laws.
- Underground utility service lines and overhead utility pole lines are to be adjusted as necessary by others prior to construction unless the plans specifically call for their adjustment by the Contractor or unless the plans specifically identify a utility to be adjusted by its owner during construction. Existing utilities and their location, as shown on the plans, represent the best information obtainable for design. Location information has been obtained from the various utility companies and is either from company record drawings or company-provided field locations. The Contractor will be required to work around existing utilities within the right-of-way which do not conflict with proposed construction.
- The Contractor shall notify pipeline companies at least two (2) working days in advance of any work being performed across and/or adjacent to pipelines.
- The Contractor shall give all property owners and/or tenants of developed property directly abutting the construction of this project a minimum of ten (10) days advance notice prior to start of construction.

## BENCH MARKS

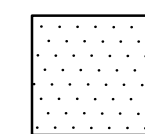
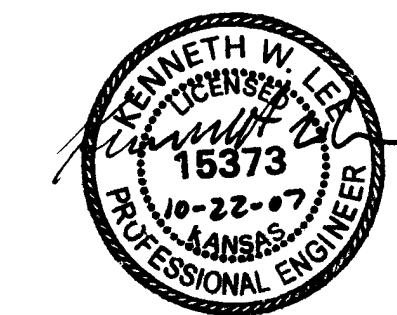
BENCH MARK #1: SRB BRASS DISC 55.45' E. & 5.13' S. OF THE N.W. COR., SW 1/4, SEC. 35, T27S, R2E.  
ELEV. = 1348.35 (NGVD) = 160.95 (CITY DATUM)

## INDEX OF SHEETS

- TITLE SHEET
- WATER ASSEMBLY DETAILS
- LINE 1 PLAN/PROFILE
- LINE 2 PLAN/PROFILE
- LINE 3 PLAN/PROFILE
- EROSION CONTROL PLAN
- 11. EROSION CONTROL BMPs
- COORDINATE MAP
- FINAL PLAT

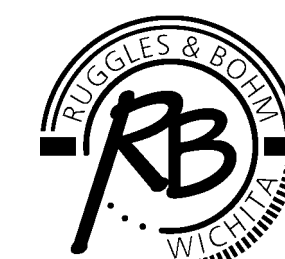


## VICINITY MAP



IMPROVEMENT DISTRICT

CITY OF WICHITA, KANSAS  
JAMES ARMOUR, P.E. - CITY ENGINEER



Ruggles & Bohm, P.A.  
Engineering, Surveying, Land Planning  
924 North Main (316) 264-8008  
Wichita, Kansas 67203 (316) 264-4621 fax  
www.rbkansas.com E-mail: info@rbkansas.com