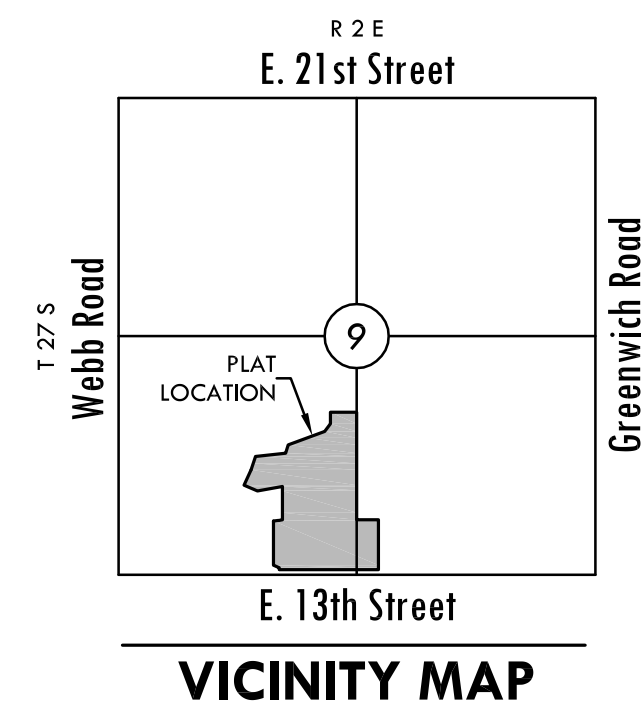


# FINAL PLAT

## THE WATERFRONT SIXTH ADDITION

### AN ADDITION TO WICHITA, SEDGWICK COUNTY, KANSAS



#### BENCH MARK

□ Square cut on SW. corner of signal light pole base at NE. corner of Webb Rd. and 13th St.  
Datum BM  
Elev.=1373.345' (NGVD 29)

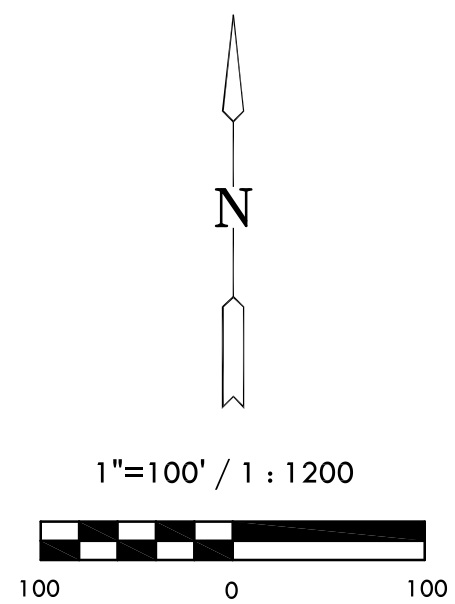
MINIMUM PAD ELEVATION LOWEST BUILDING OPENING		
LOT	BLOCK	ELEVATION NGVD 29
2	1	1380.5
N. 550.53' of 3	1	1380.5
S. 265.0' of 3	1	1386.1
N. 270.0' of 4	1	1386.1

STREET CENTERLINE TABLE		
LINE	LENGTH	BEARING
L1	526.69'	N00°59'11"W
L2	67.65'	N15°25'33"E
L3	141.50'	S89°00'49"W
L4	45.00'	S75°42'05"W

STREET CENTERLINE CURVE TABLE			
CURVE	LENGTH	RADIUS	DELTA
C1	156.40'	600.00'	14°56'06"
C2	218.84'	400.00'	31°20'50"
C3	193.87'	300.00'	37°01'32"
C4	82.78'	200.00'	23°42'48"
C5	64.31'	215.00'	17°08'21"

#### NOTES

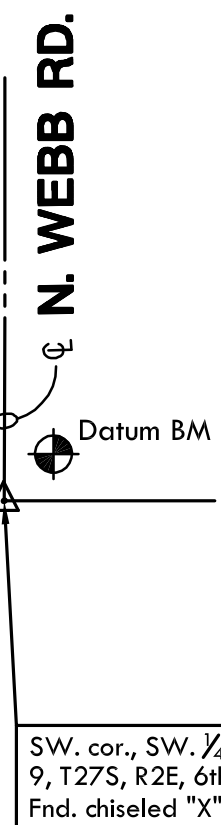
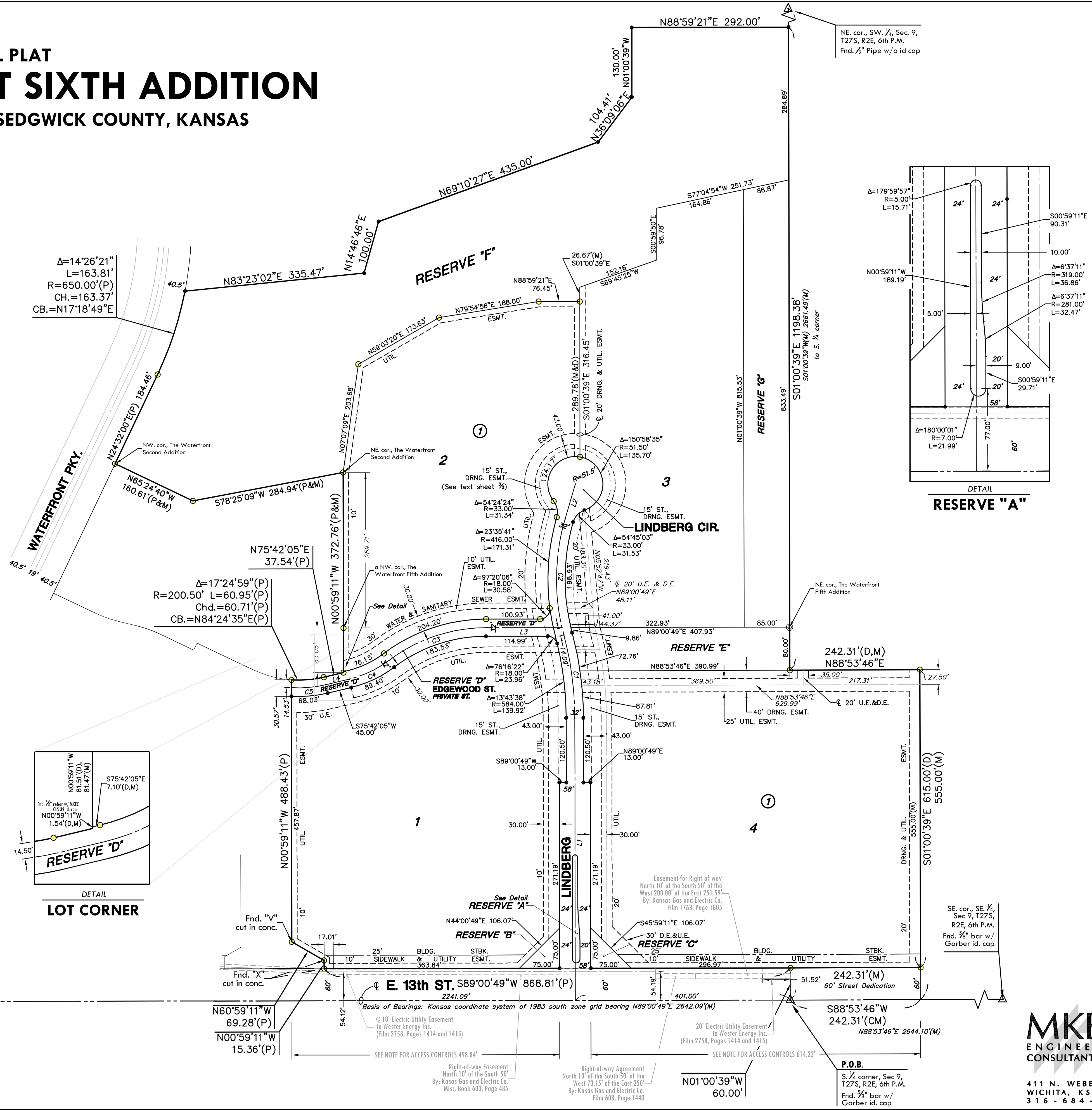
- Access Controls:**  
13th Street - Access points for Block 1 shall be placed accordingly: The minimum distance between full turning movement drives shall be 400'. The minimum distance between a right-in/right-out drive and either another right-in/right-out drive or a full movement drive shall be 200'.
- Street Drainage Easements:**  
Along Lindberg Street and Lindberg Circle where there is 32' of right-of-way a 15' street drainage easement is provided abutting and adjoining the 32' right-of-way as indicated.



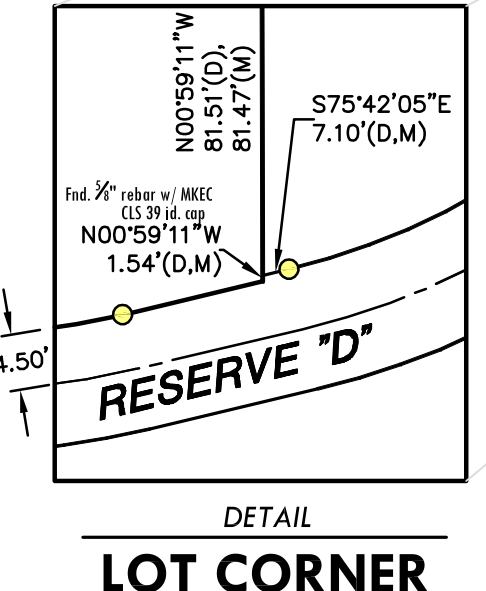
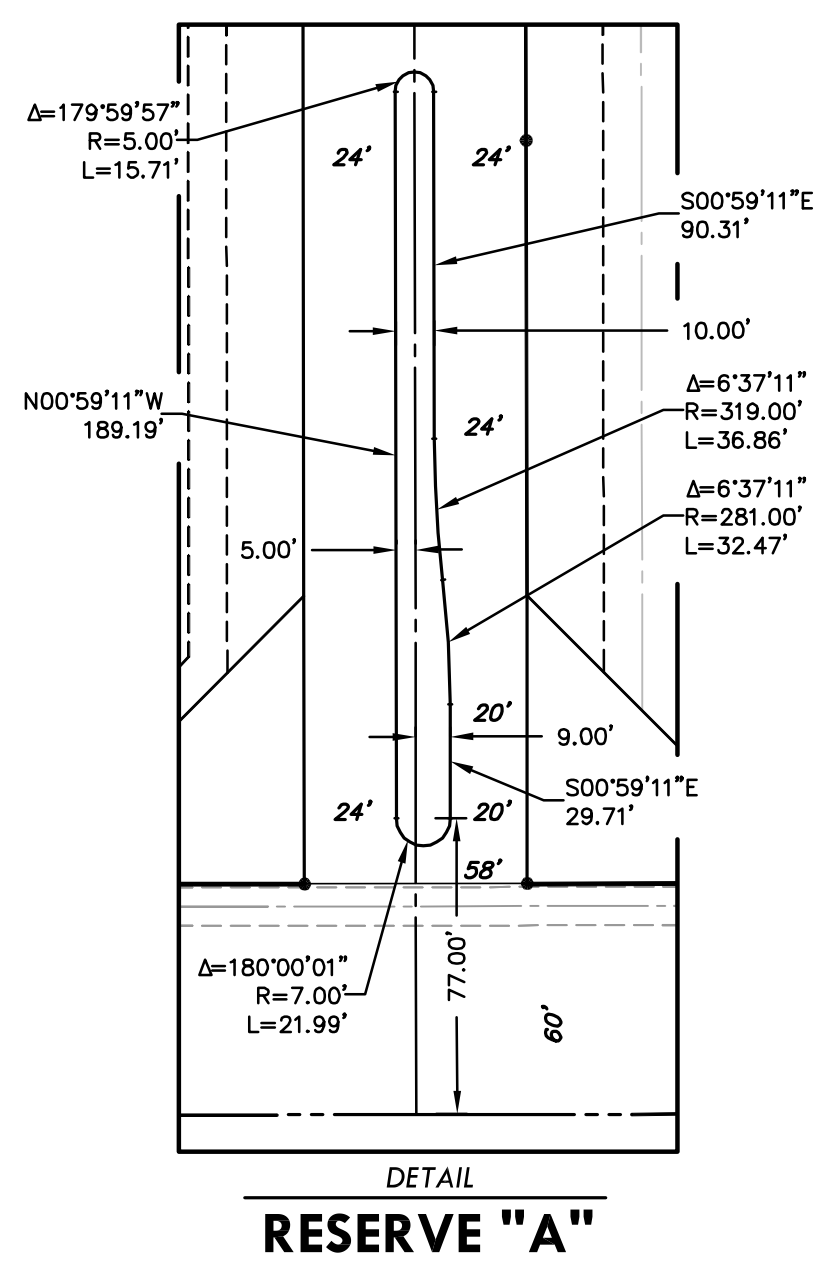
Basis of Bearing: Kansas coordinate system of 1983 south zone grid bearing of N89°00'49"E along the S. line of SW. 1/4, Sec. 9, T27S, R2E, 6th P.M.

#### LEGEND

- Date of Survey: July, 2006
- △ = Section corner Monument Found
  - = Found 3/8" Rebar w/ MKEC  
CLS 39 id. cap
  - = Set 3/8" Rebar w/ MKEC  
CLS 39 id. cap
  - (M) = Measured
  - (CM) = Calculated from measured
  - (P) = Platted
  - (D) = Described or Record Dimension



NE. cor., SW. 1/4, Sec. 9, T27S, R2E, 6th P.M.  
Fnd. 1/2" Pipe w/o id cap



**MKEC**  
ENGINEERING  
CONSULTANTS, INC.

411 N. WEBB ROAD  
WICHITA, KS. 67206  
316-684-9600