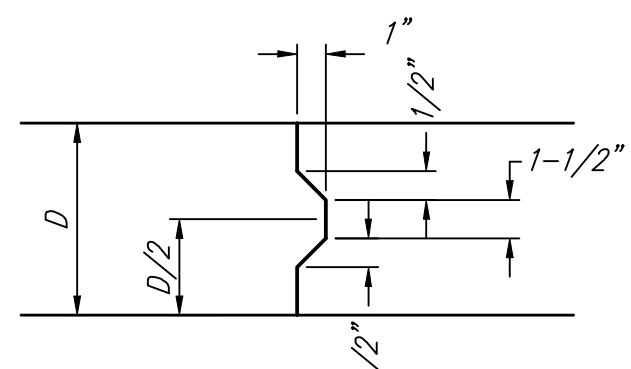
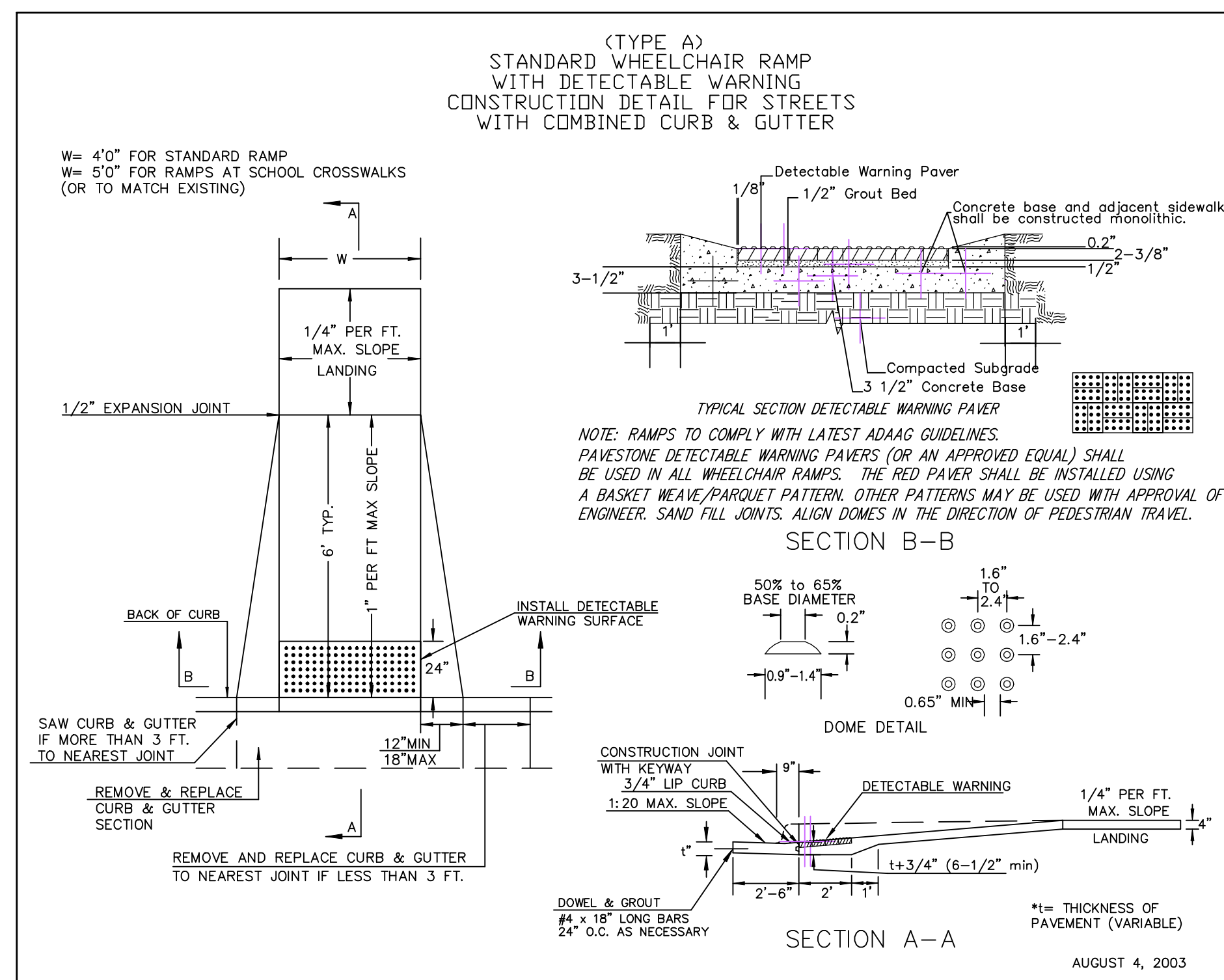


**EXPANSION JOINT**

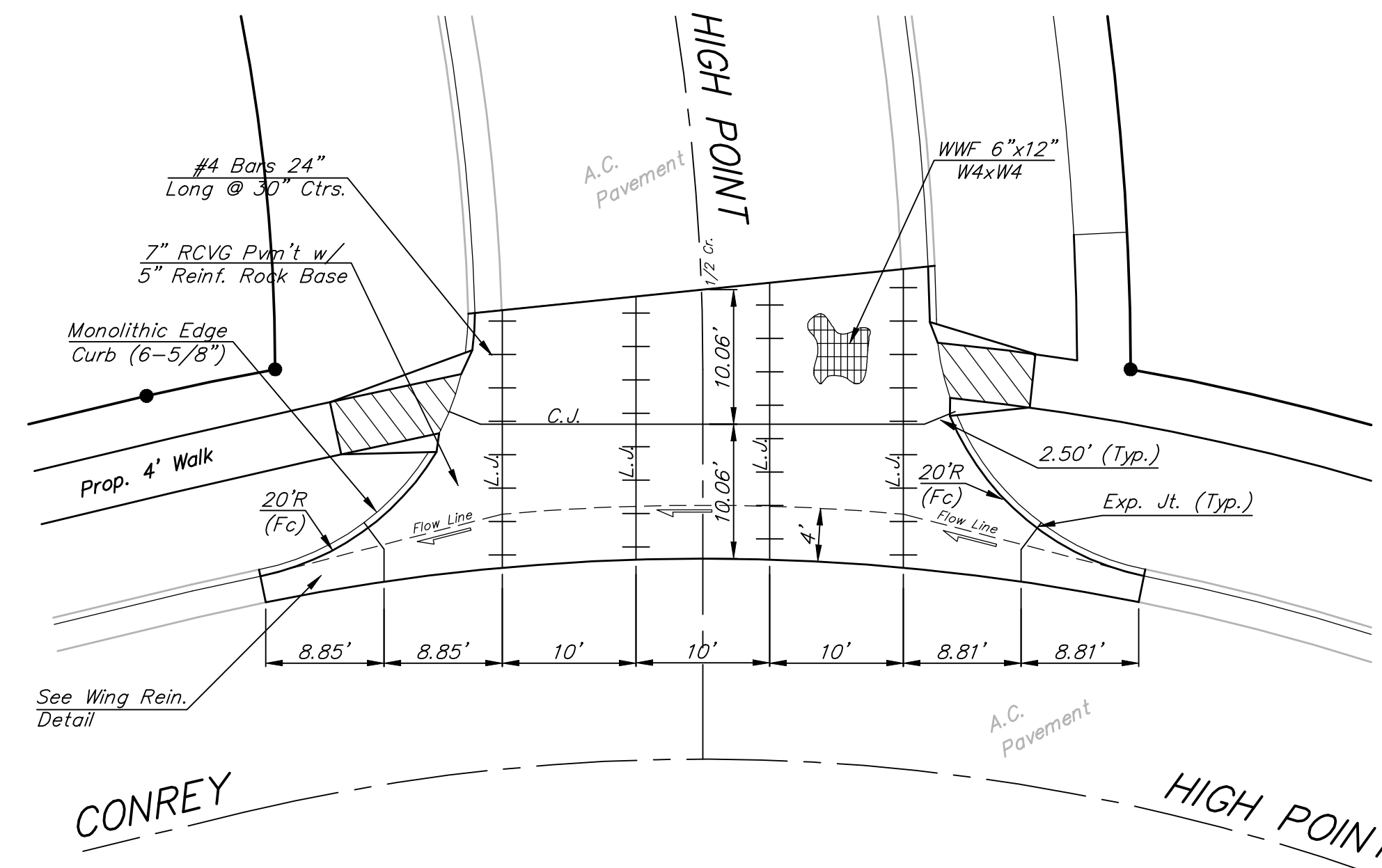
NOTE: Extra Thickness to be Subsidiary to Price of Square Yards Pavement



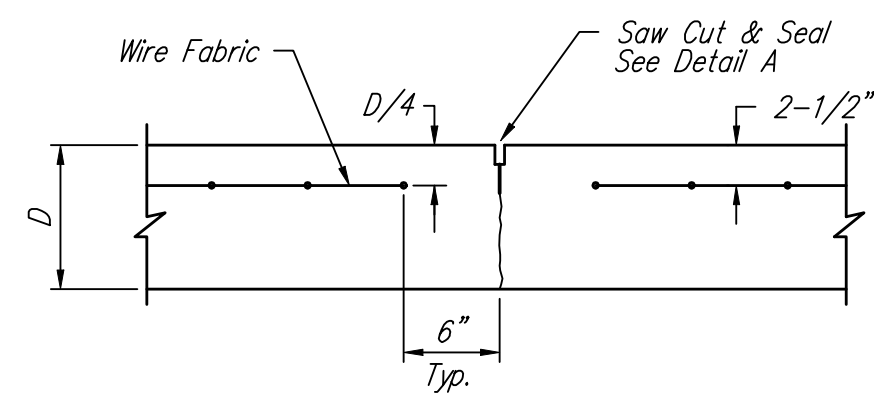
**KEYWAY DETAIL**



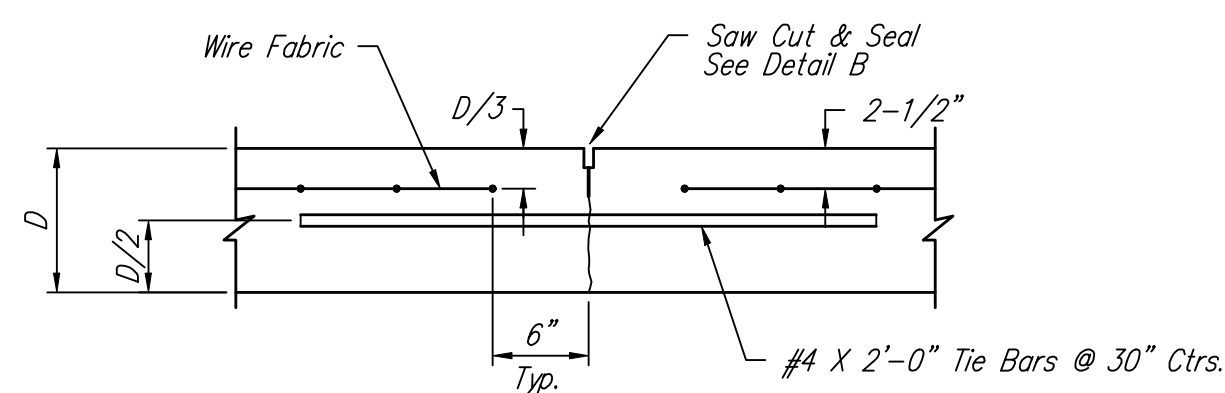
**WHEELCHAIR RAMP DETAIL**



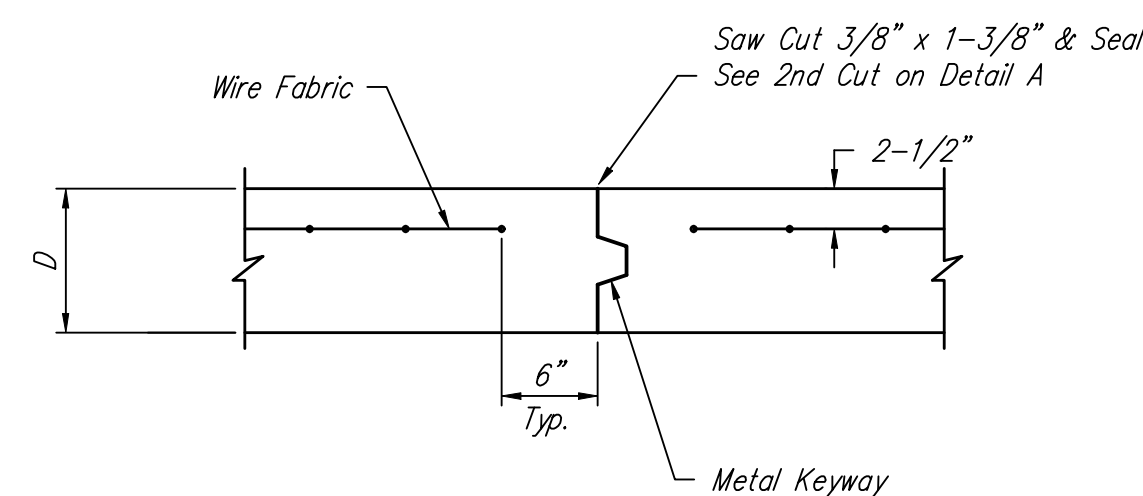
Scale: 1" = 10'



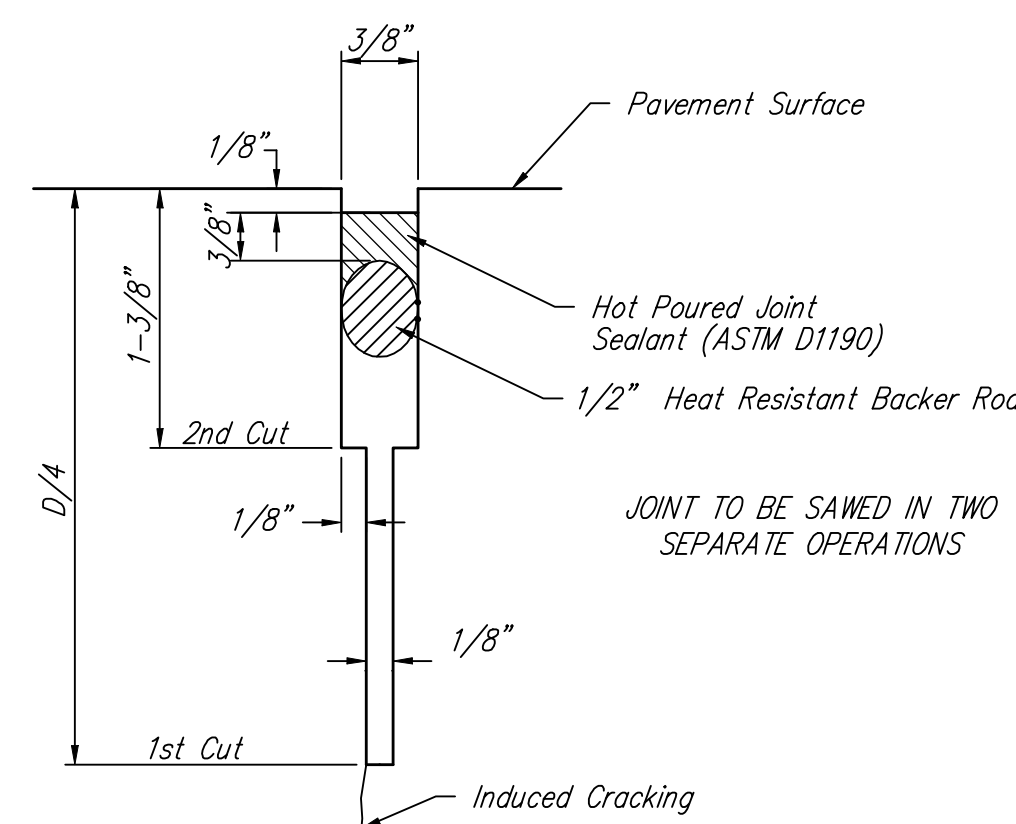
**CONTRACTION JOINT DETAIL (C.J.)**



**LONGITUDINAL JOINT DETAIL (L.J.)**

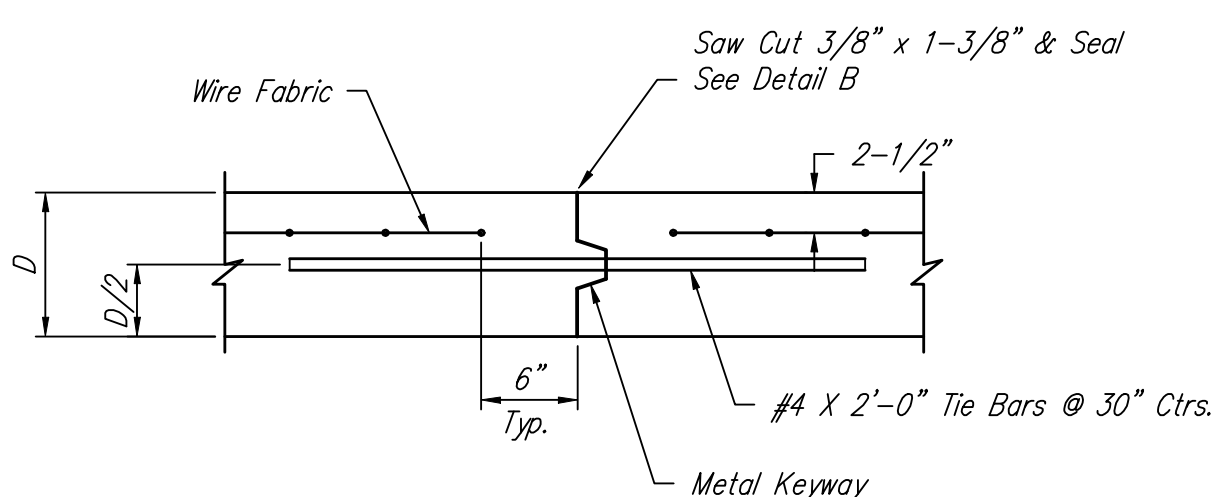


**OPTIONAL CONTRACTION JOINT (CONSTRUCTION JOINT)**

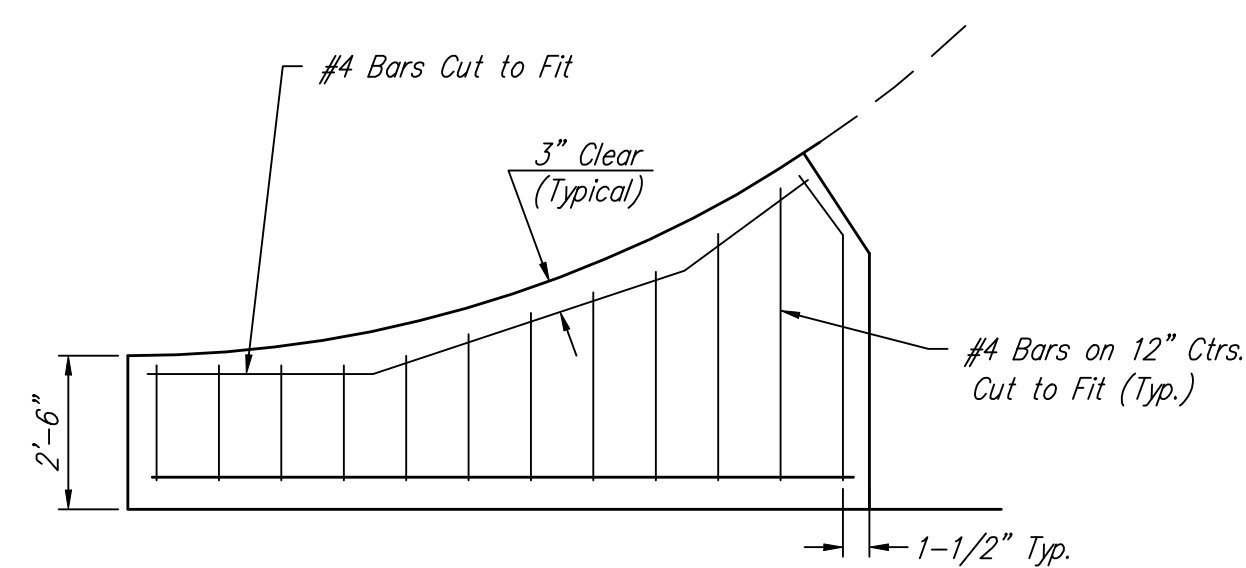


**SAW JOINT DETAIL "A"**

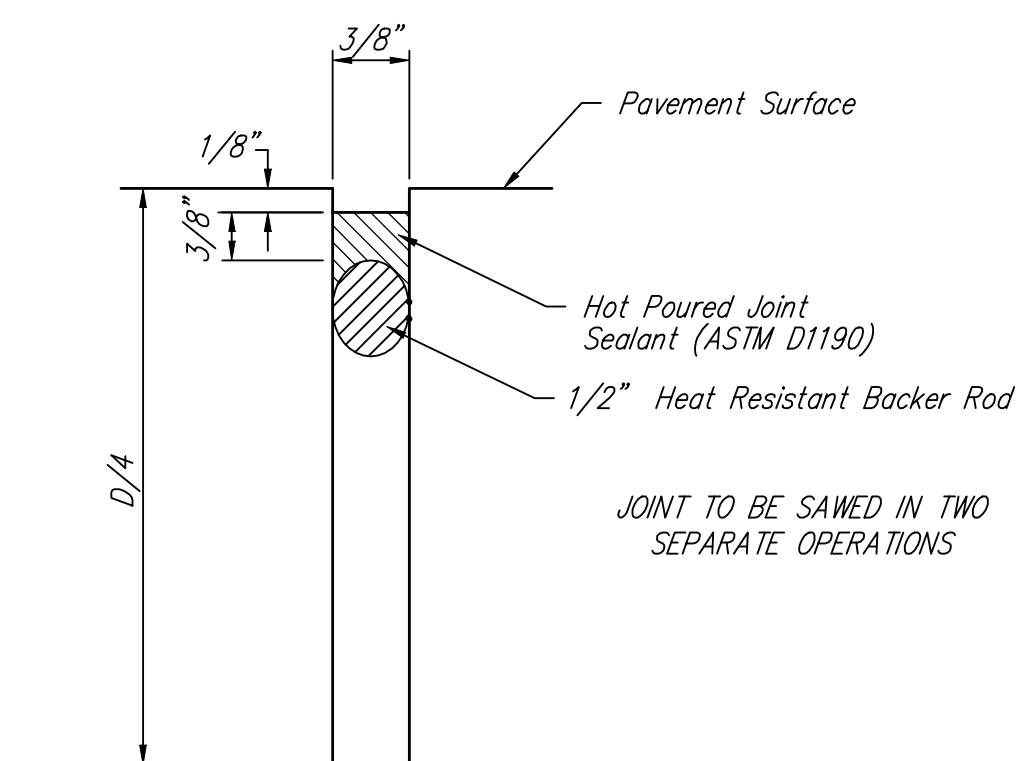
NOTE: 6" X 12" W4XW4 Wire Fabric Reinforcing Shall Be Placed So That The Wires With The 6" Spacing Will Run Parallel With The Longitudinal Joints.



**OPTIONAL LONGITUDINAL JOINT DETAIL (L.J.) (CONSTRUCTION JOINT)**



**WING REINFORCING DETAIL**



**SAW JOINT DETAIL "B"**

	Tyler's Landing 3rd - Phase 2	
	<b>VALLEY GUTTER DETAILS</b>	
Baughman Company, P.A. 315 Ellis St. Wichita, KS 67211 P 316-262-7271 F 316-262-0149		
ENGINEERING   SURVEYING   PLANNING   LANDSCAPE ARCHITECTURE		
PROJECT NUMBER 47284496	DESIGN STAFF	DRAWN STAFF
REVISIONS:	APPROVED	DATE
		OCT. 2007
	SCALE	NONE
	SHEET	<b>5 OF 23</b>
/VG_Detail.dwg		07-09-E925