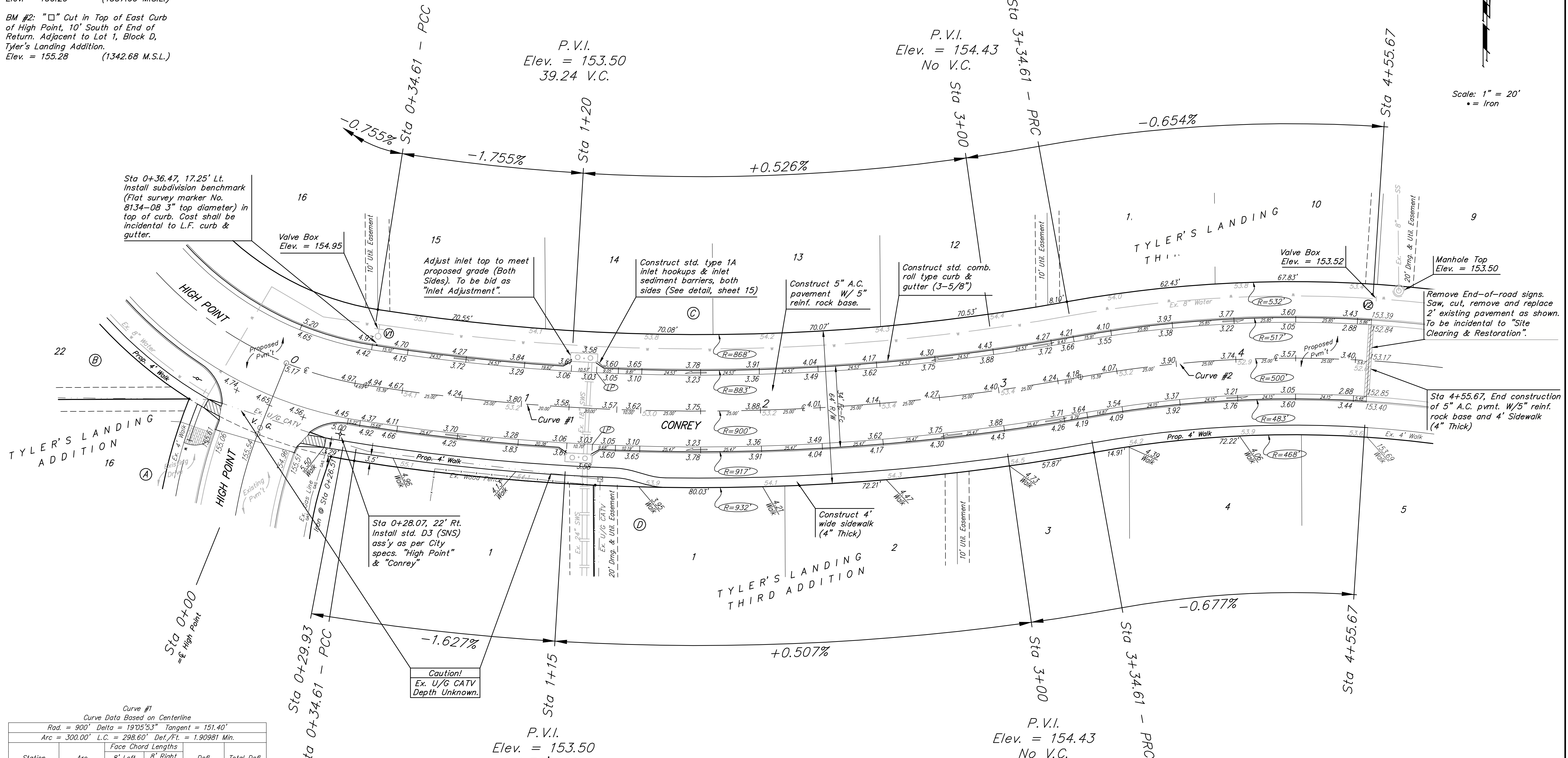


Benchmarks:
 BM #1: "□" Cut in Middle of Curb Inlet Top, North Curb of Conrey, Adjacent to SW Corner of Lot 14, Block A, Tyler's Landing 3rd Addition. Elev. = 150.29 (1337.69 M.S.L.)
 BM #2: "□" Cut in Top of East Curb of High Point, 10' South of End of Return. Adjacent to Lot 1, Block D, Tyler's Landing Addition. Elev. = 155.28 (1342.68 M.S.L.)

Scale: 1" = 20'
 • = Iron



Curve #1
 Curve Data Based on Centerline
 Rad. = 900' Delta = 19°05'53" Tangent = 151.40'
 Arc = 300.00' L.C. = 298.60' Def./Pt. = 1.90981 Min.

Station	Arc	Face Chord Lengths		Defl.	Total Defl.
		8' Left	8' Right		
0+34.61	-	-	-	0°00'00"	0°00'00"
0+50.00	15.39'	14.96'	15.82'	0°29'24"	0°29'24"
0+75.00	25.00'	24.30'	25.69'	0°47'44"	1°17'08"
1+00.00	25.00'	24.30'	25.69'	0°47'45"	2°04'53"
1+20.00	20.00'	19.44'	20.55'	0°38'12"	2°43'05"
1+40.00	20.00'	19.44'	20.55'	0°38'11"	3°21'16"
1+50.00	10.00'	9.72'	10.28'	0°19'06"	3°40'22"
1+75.00	25.00'	24.30'	25.69'	0°47'45"	4°28'07"
2+00.00	25.00'	24.30'	25.69'	0°47'45"	5°15'52"
2+25.00	25.00'	24.30'	25.69'	0°47'44"	6°03'36"
2+50.00	25.00'	24.30'	25.69'	0°47'45"	6°51'21"
2+75.00	25.00'	24.30'	25.69'	0°47'45"	7°39'06"
3+00.00	25.00'	24.30'	25.69'	0°47'45"	8°26'51"
3+25.00	25.00'	24.30'	25.69'	0°47'44"	9°14'35"
3+34.61	9.61'	9.34'	9.88'	0°18'21"	9°32'56"

VALVE LOCATION TABLE

VALVE NUMBER	BASELINE STATION	OFFSET DISTANCE	OFFSET DIRECTION
1	0+36.39	25.88	Lt.
2	4+57.04	26.00	Lt.

Paving contractor will be responsible to operate all water valves on the project, in the presence of the inspector, to ensure accessibility to the valves, and that all valves are left in the "ON" position when the project is completed.

Curve #2
 Curve Data Based on Centerline
 Rad. = 500' Delta = 13°52'27" Tangent = 60.84'
 Arc = 121.06' L.C. = 120.78' Def./Pt. = 3.43817 Min.

Station	Arc	Face Chord Lengths		Defl.	Total Defl.
		8' Left	8' Right		
3+34.61	-	-	-	0°00'00"	0°00'00"
3+50.00	15.39'	16.16'	14.62'	0°52'55"	0°52'55"
3+75.00	25.00'	26.25'	23.75'	1°25'57"	2°18'52"
4+00.00	25.00'	26.25'	23.75'	1°25'57"	3°44'49"
4+25.00	25.00'	26.25'	23.75'	1°25'58"	5°10'47"
4+50.00	25.00'	26.25'	23.75'	1°25'57"	6°36'44"
4+55.67	5.67'	5.95'	5.39'	0°19'30"	6°56'14"

NOTE: ROLL TYPE CURB & GUTTER TO BE CONSTRUCTED ON THE PAVEMENT SHOWN ON THIS SHEET. TOP OF CURB ELEVATIONS ARE GIVEN FOR FULL HEIGHT CURB.

Baughman Conrey
 Tyler's Landing 3rd Addition - Phase 3
 Street Paving Improvements

Baughman Company, P.A. 315 Ellis St. Wichita, KS 67211 P 316-262-7271 F 316-262-0149
 ENGINEERING | SURVEYING | PLANNING | LANDSCAPE ARCHITECTURE

PROJECT NUMBER: 47284496
 DESIGN: RDM/AEG DRAWN: RDM
 APPROVED: AEG DATE: OCT 2007
 SCALE: Noted
 SHEET: 6 OF 23

Tyler's Landing 3rd Phase 3 STR 0610_STR_1.dwg 07-09-E925