

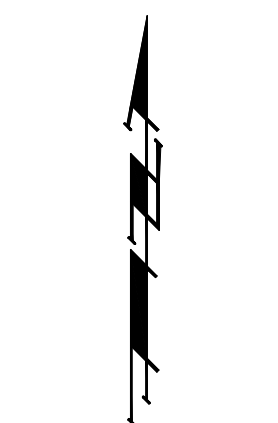
Benchmarks:
 BM #1: "□" Cut in Middle of Curb Inlet Top, North Curb of Convey, Adjacent to SW Corner of Lot 14, Block A, Tyler's Landing 3rd Addition. Elev. = 150.29 (1337.69 M.S.L.)

BM #2: "□" Cut in Top of East Curb of High Point, 10' South of End of Return. Adjacent to Lot 1, Block D, Tyler's Landing Addition. Elev. = 155.28 (1342.68 M.S.L.)

Curve #8
 Curve Data Based on Centerline
 Rad. = 900' Delta = 142°31'33" Tangent = 113.59'
 Arc = 225.99' L.C. = 225.40' Def./Ft. = 1.90986 Min.

Station	Arc	Face Chord Lengths		Defl.	Total Defl.
		8' Left	8' Right		
8+86.42	-	-	-	0'00"00"	0'00"00"
9+00.00	13.58'	13.96'	13.20'	0'25"56"	0'25"56"
9+25.00	25.00'	25.69'	24.30'	0'47"45"	1'13"41"
9+50.00	25.00'	25.69'	24.30'	0'47"45"	2'01"26"
9+75.00	25.00'	25.69'	24.30'	0'47"45"	2'49"11"
10+00.00	25.00'	25.69'	24.30'	0'47"44"	3'36"55"
10+25.00	25.00'	25.69'	24.30'	0'47"45"	4'24"40"
10+50.00	25.00'	25.69'	24.30'	0'47"45"	5'12"25"
10+75.00	25.00'	25.69'	24.30'	0'47"45"	6'00"10"
11+00.00	25.00'	25.69'	24.30'	0'47"44"	6'47"54"
11+12.41	12.41'	12.75'	12.07'	0'23"43"	7'11"37"

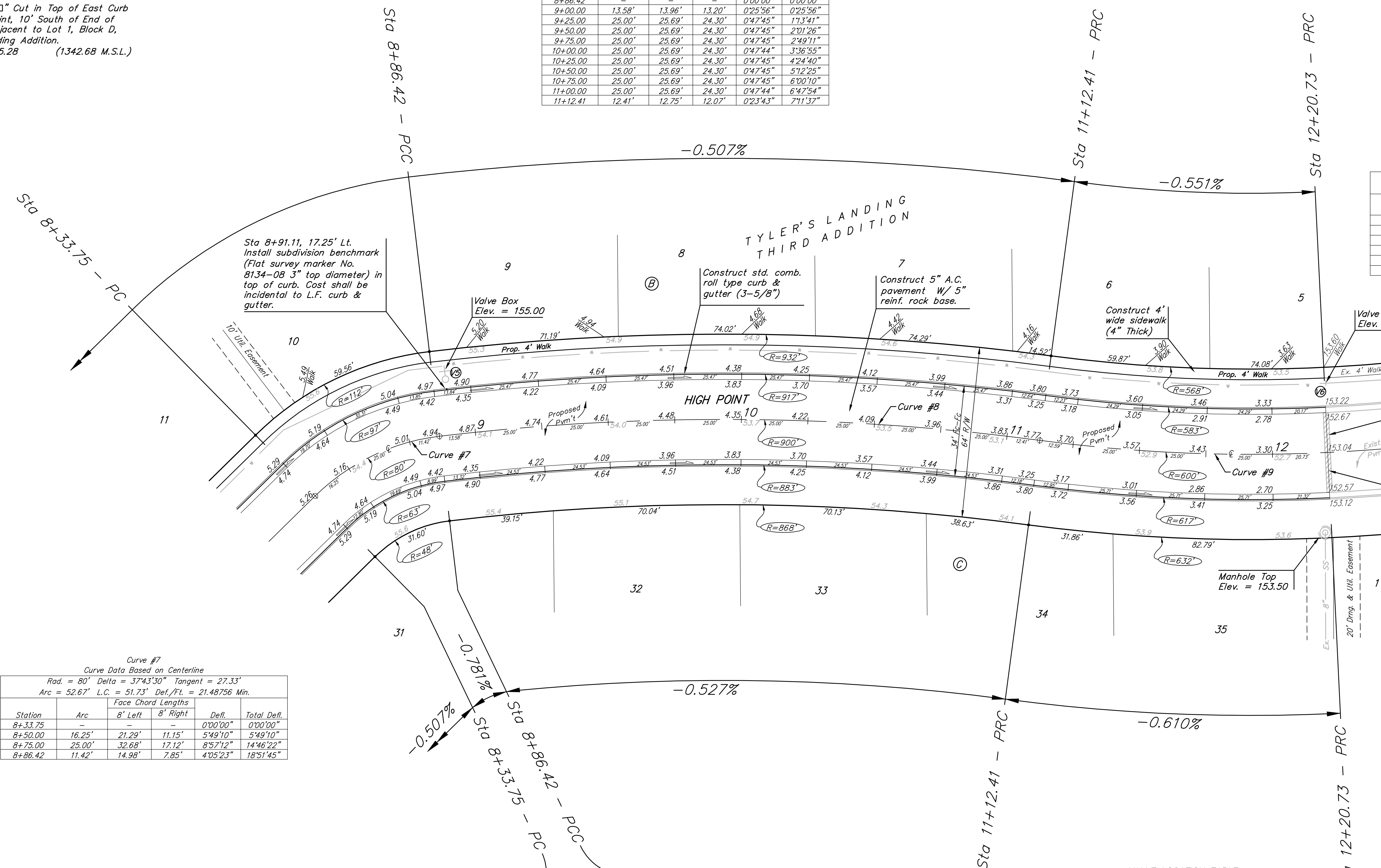
P.V.I.
 Elev. = 153.80
 No V.C.



Scale: 1" = 20'
 • = Iron

Curve #9
 Curve Data Based on Centerline
 Rad. = 600' Delta = 102°20'38" Tangent = 54.31'
 Arc = 108.32' L.C. = 108.17' Def./Ft. = 2.86481 Min.

Station	Arc	Face Chord Lengths		Defl.	Total Defl.
		8' Left	8' Right		
11+12.41	-	-	-	0'00"00"	0'00"00"
11+25.00	12.59'	12.07'	13.11'	0'36"04"	0'36"04"
11+50.00	25.00'	23.96'	26.04'	1'11"37"	1'47"41"
11+75.00	25.00'	23.96'	26.04'	1'11"37"	2'59"19"
12+00.00	25.00'	23.96'	26.04'	1'11"37"	4'10"56"
12+20.73	20.73'	19.87'	21.59'	0'59"23"	5'10"19"



Curve #7
 Curve Data Based on Centerline
 Rad. = 80' Delta = 37°43'30" Tangent = 27.33'
 Arc = 52.67' L.C. = 51.73' Def./Ft. = 21.48756 Min.

Station	Arc	Face Chord Lengths		Defl.	Total Defl.
		8' Left	8' Right		
8+33.75	-	-	-	0'00"00"	0'00"00"
8+50.00	16.25'	21.29'	11.15'	5'49"10"	5'49"10"
8+75.00	25.00'	32.68'	17.12'	8'57"12"	14'46"22"
8+86.42	11.42'	14.98'	7.85'	4'05"23"	18'51"45"

P.V.I.
 Elev. = 155.29
 No V.C.

P.V.I.
 Elev. = 154.97
 No V.C.

P.V.I.
 Elev. = 153.80
 No V.C.

VALVE LOCATION TABLE

VALVE NUMBER	BASELINE STATION	OFFSET DISTANCE	OFFSET DIRECTION
5	8+91.11	26.00'	Lt.
6	12+21.26	26.00'	Lt.

Paving contractor will be responsible to operate all water valves on the project, in the presence of the inspector, to ensure accessibility to the valves, and that all valves are left in the "ON" position when the project is completed.

NOTE: ROLL TYPE CURB & GUTTER TO BE CONSTRUCTED ON THE PAVEMENT SHOWN ON THIS SHEET. TOP OF CURB ELEVATIONS ARE GIVEN FOR FULL HEIGHT CURB.

Baughman High Point
 Street Paving Improvements
 Tyler's Landing 3rd Addition - Phase 3

47284496
 RDM/AEG
 AEG
 Noted
 SHEET

9 OF 23

Tyler's Landing 3rd Phase 3\STR\0610_STR_1.dwg 07-09-E925