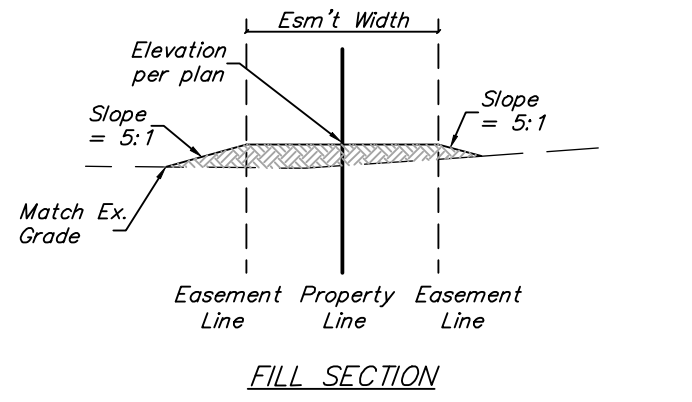


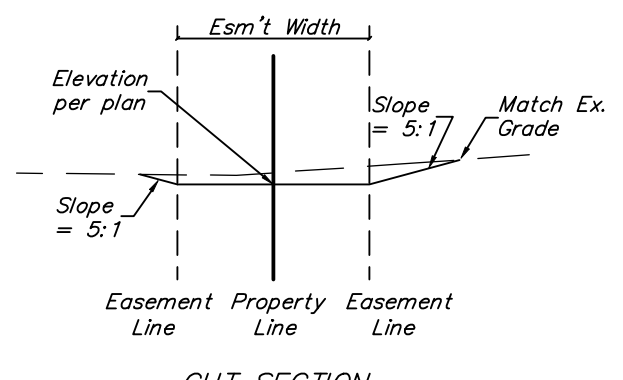
37TH ST. N.



Scale: 1" = 80'

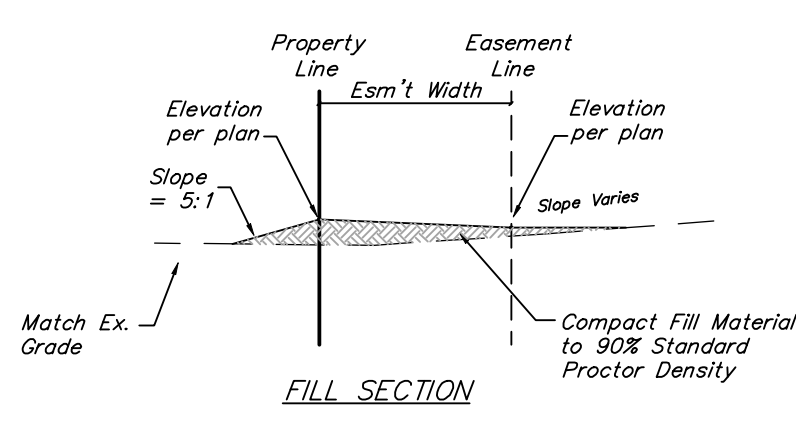


FILL SECTION

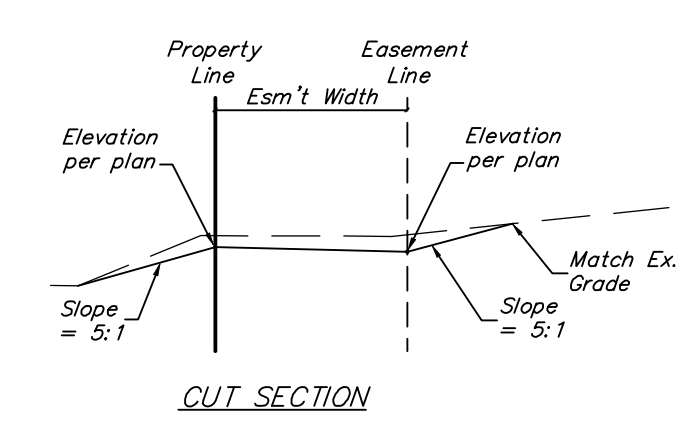


CUT SECTION

SECTION A-A



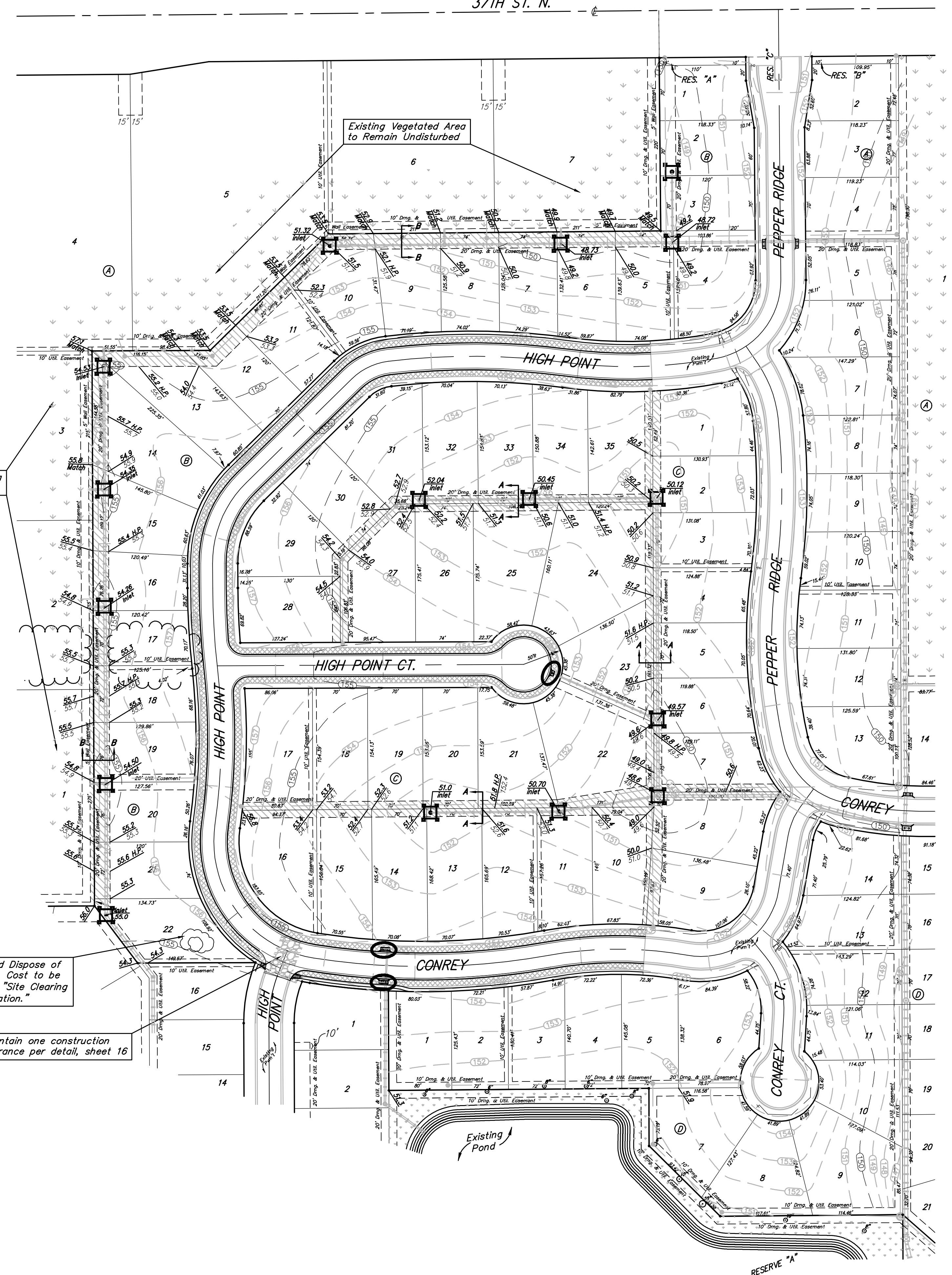
FILL SECTION



CUT SECTION

SECTION B-B

PROP. EST. = Spot Grade



Existing Vegetated Area to Remain Undisturbed

Remove and Dispose of Rubble Pile. Cost to be included in "Site Clearing and Restoration."

Maintain one construction entrance per detail, sheet 16

EROSION CONTROL MEASURE	UNITS	QUANTITY
Install Curb Inlet Barrier	Ea.	3
Maintain Drop Inlet Barrier	Ea.	16
Maintain Construction Entrance	Ea.	1
Curlex Erosion Control Mat	S.Y.	3690
Project Seeding	L.S.	1
Easement Grading	L.S.	1
Site Clearing and Restoration	L.S.	1

Quantities are For Information Only! Contractor shall verify quantities per final bid quantity sheet.

**EROSION CONTROL PLAN LEGEND**  
(SEE SHEETS 12-15 FOR BMP DETAILS)

- INSTALL CURB INLET BARRIER
- MAINTAIN DROP INLET BARRIER
- MAINTAIN CONSTRUCTION ENTRANCE
- EASEMENTS TO BE GRADED
- INSTALL CURLEX EROSION CONTROL MAT
- EX. VEGETATED AREA
- EX. GRASSED AREA

	Tyler's Landing 3rd Addition Phase 3 <b>EROSION CONTROL/ ESM'T GRADING PLAN</b> <b>STREET PAVING IMPROVEMENTS</b>	
	Baughman Company, P.A. 315 Ellis St. Wichita, KS 67211 P 316-262-7271 F 316-262-0149 ENGINEERING   SURVEYING   PLANNING   LANDSCAPE ARCHITECTURE	
PROJECT NUMBER 47284496	DESIGN RDM/AEG	DRAWN RDM
REVISIONS:	APPROVED AEG	DATE OCT. 2007
SCALE Noted		SHEET <b>11 OF 23</b>
\Tyler's Landing 3rd\Phase 3\STR\11_STR_EC_Plan.dwg		07-09-E925